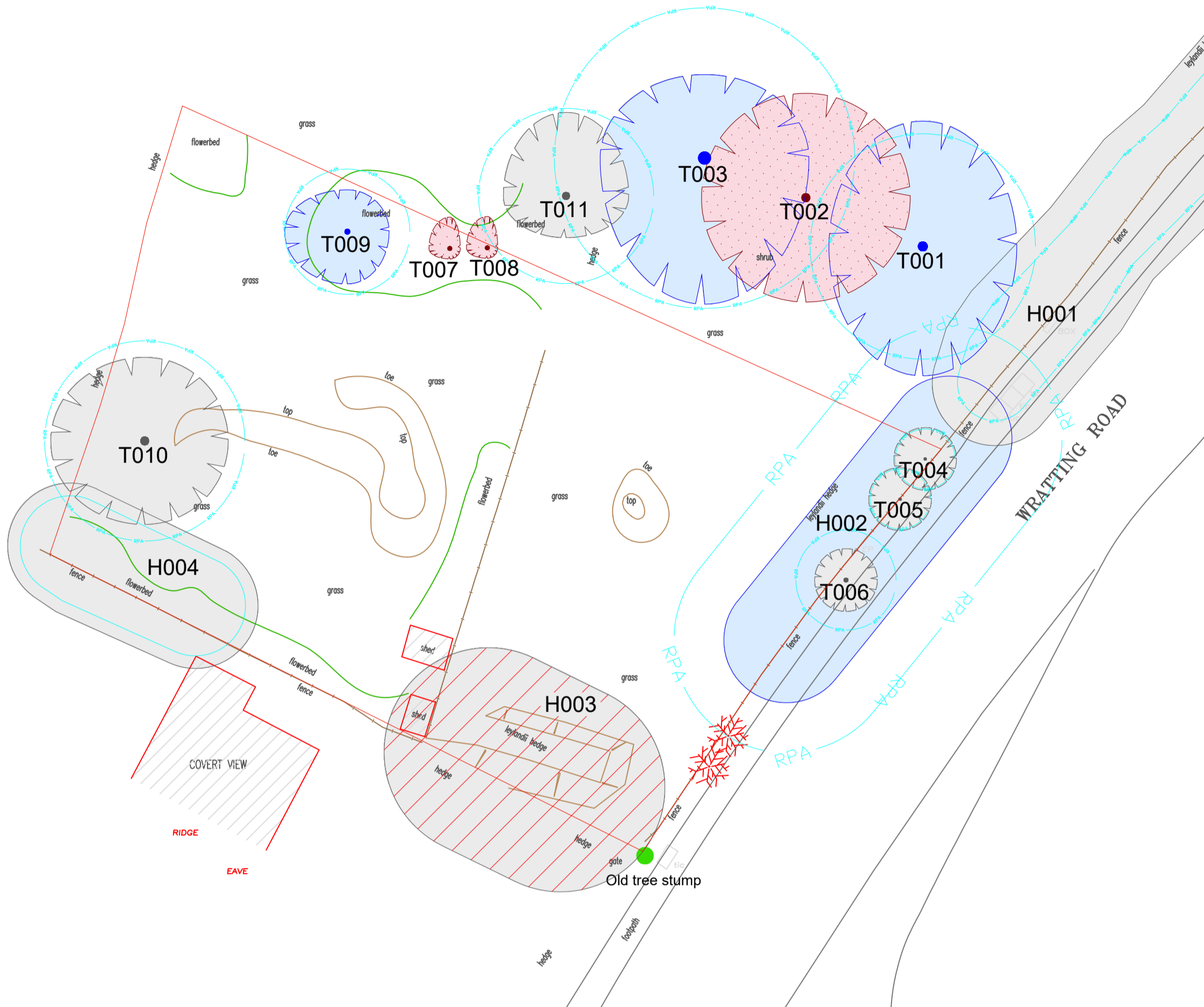
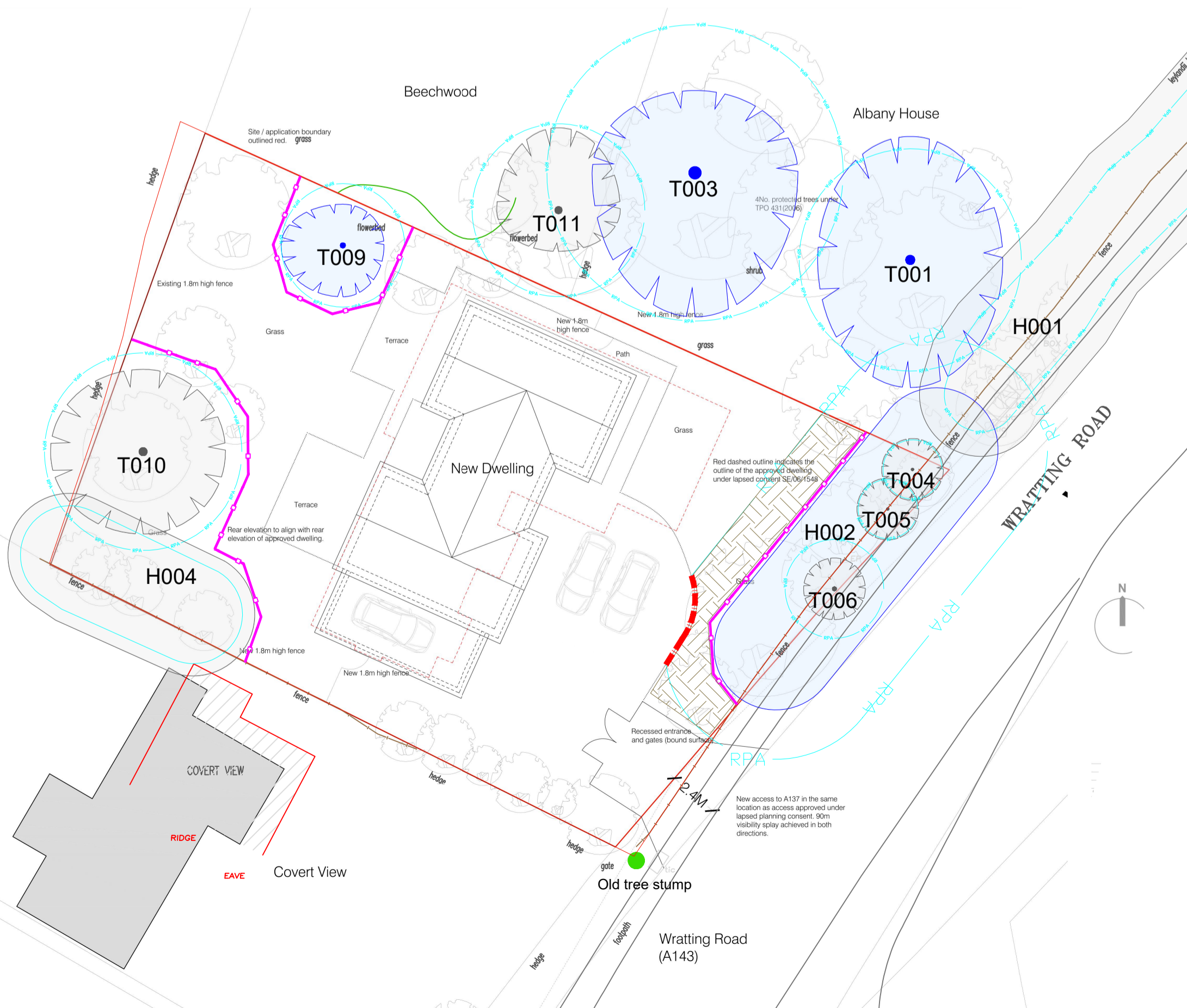


### Existing Site Plan



### Proposed Site Plan

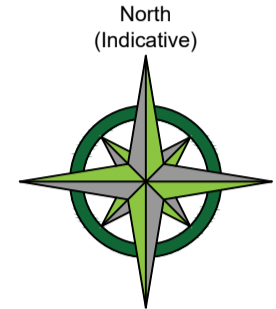


### CATEGORY AND DEFINITION

Trees unsuitable for retention	
Category U	Those in such condition that they cannot realistically be retained as living trees in the current land use for longer than 10 years
Trees to be considered for retention	
Category A	Trees of high quality with an estimated remaining life expectancy of at least 40 years
Category B	Trees of moderate quality with an estimated remaining life expectancy of at least 20 years
Category C	Trees of low quality with an estimated remaining life expectancy of at least 10 years, or young trees with a stem diameter below 150mm

### NOTE:

Hayden's Arboricultural Consultants were provided with a Topographical Survey but these do not always show the positions of all the trees/features on site. The locations of any additional features have been fixed using GPS. As such the position of the trees/landscape features should not be taken as exact but gives a fair distribution of their locations on site.



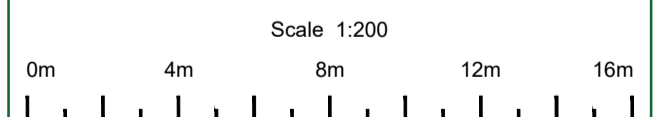
### LEGEND

	Existing Tree/Feature BS 5837:2012 Category B
	Existing Tree/Feature BS 5837:2012 Category C
	Existing Tree/Feature to be removed to allow for development BS 5837:2012 Category C
	Line of Root Protection Area (RPA) - calculated following guidelines set in BS 5837:2012
	Existing Tree/Feature to be Removed BS 5837:2012 Category U
	Dead or Dying Tree
	Line of proposed Root Pruning
	Area of temporary Ground Protection
	Line of proposed temporary protective barrier

-	06/01/23	JF	Based on topographical survey and 22 004 01 rev00 Proposed site plan
Rev:	Date:	By:	Revision:

The position, condition, and dimensions of the trees are based on a site survey undertaken on 29/11/22

"The original of this drawing was produced in colour - a monochrome copy should not be relied upon"



© HAYDEN'S 2022  
 5 Moseleys Farm Business Centre  
 Fornham All Saints,  
 Bury St Edmunds  
 Suffolk IP28 6JY  
 Head Office: 01284 765391  
 Southern Office: 01722 657423  
 Email: info@treesurveys.co.uk

Client:	Chris Read Architect	Drawing Title:	Prelim AIA
Site:	New House, Wrating Road, Haverhill, Suffolk, CB9 0DE		
Date:	06/01/23	Drawn By:	JF
Scale:	1:200 (A2)	Checked By:	LD
		Drawn No:	CliPro\9953-D-AIA.dwg
		Rev:	-