

**Advice : HSL-240220071604-582 DO NOT ADVISE AGAINST**

**Your Ref:** DC/24/0185/FUL

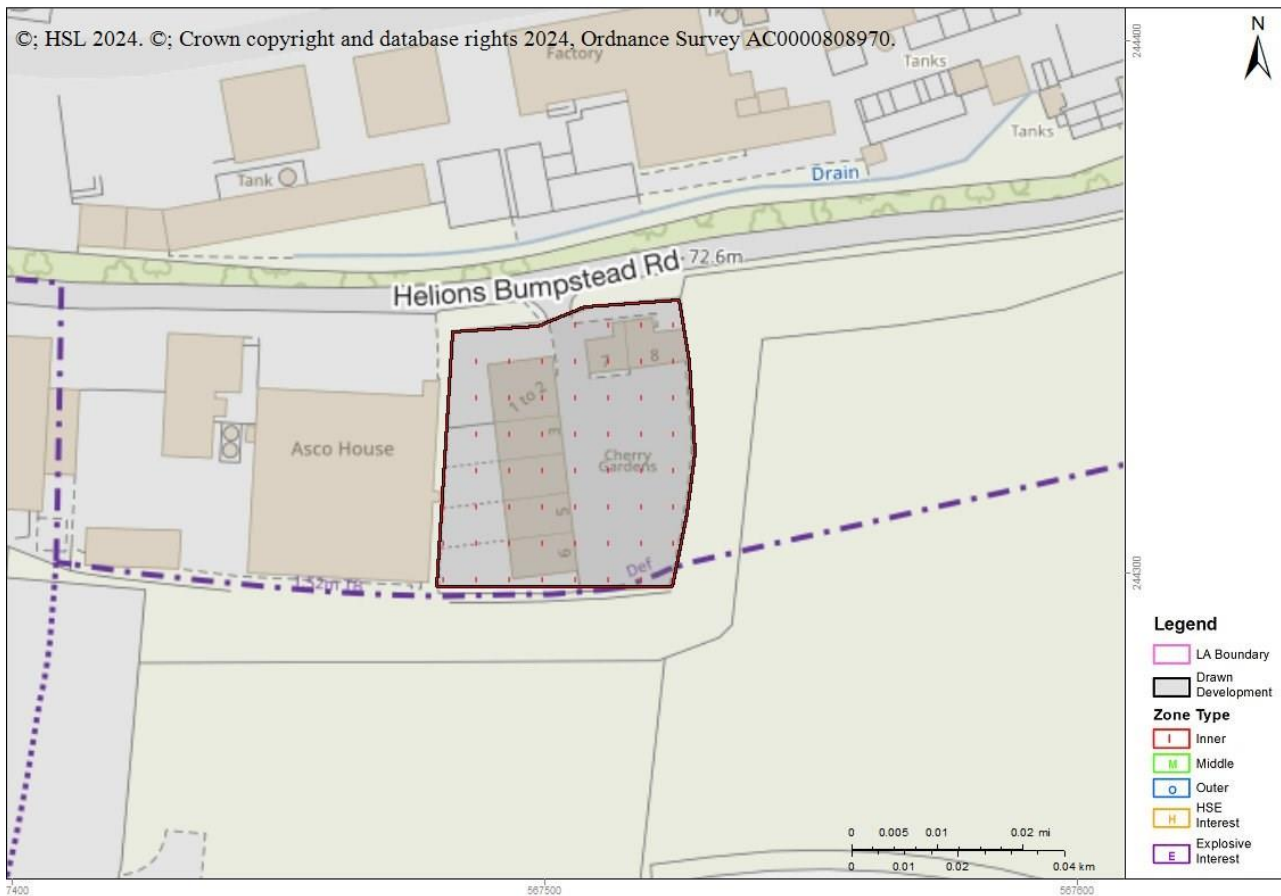
**Development Name:** Cherry Gardens, Helions Bumpstead Road, Haverhill CB9 7AA

**Comments:** Detached light industrial units

Land Use Planning Consultation with Health and Safety Executive [Town and Country Planning (Development Management Procedure) (England) Order 2015, Town and Country Planning (Development Management Procedure) (Wales) Order 2012, or Town and Country Planning (Development Management Procedure) (Scotland) Regulations 2013]

The Health and Safety Executive (HSE) is a statutory consultee for certain developments within the Consultation Distance of Major Hazard Sites/ pipelines. This consultation, which is for such a development and is within at least one Consultation Distance, has been considered using HSE's planning advice web app, based on the details input on behalf of West Suffolk .

**HSE's Advice: Do Not Advise Against, consequently, HSE does not advise, on safety grounds, against the granting of planning permission in this case.**



**Breakdown:**

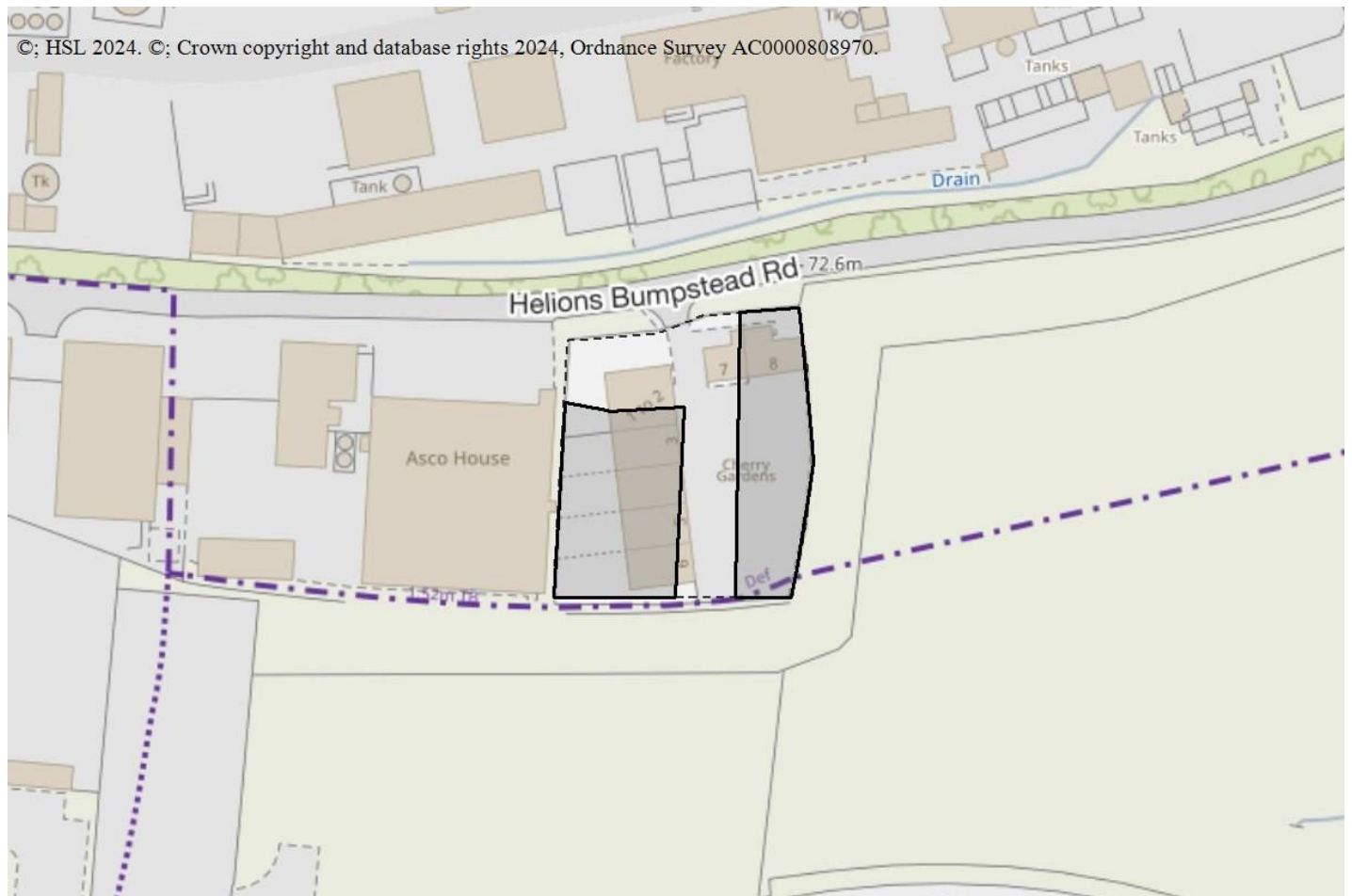


Workplaces : Do Not Advise Against

Is it a workplace specifically for people with disabilities, e.g. sheltered workshops? No

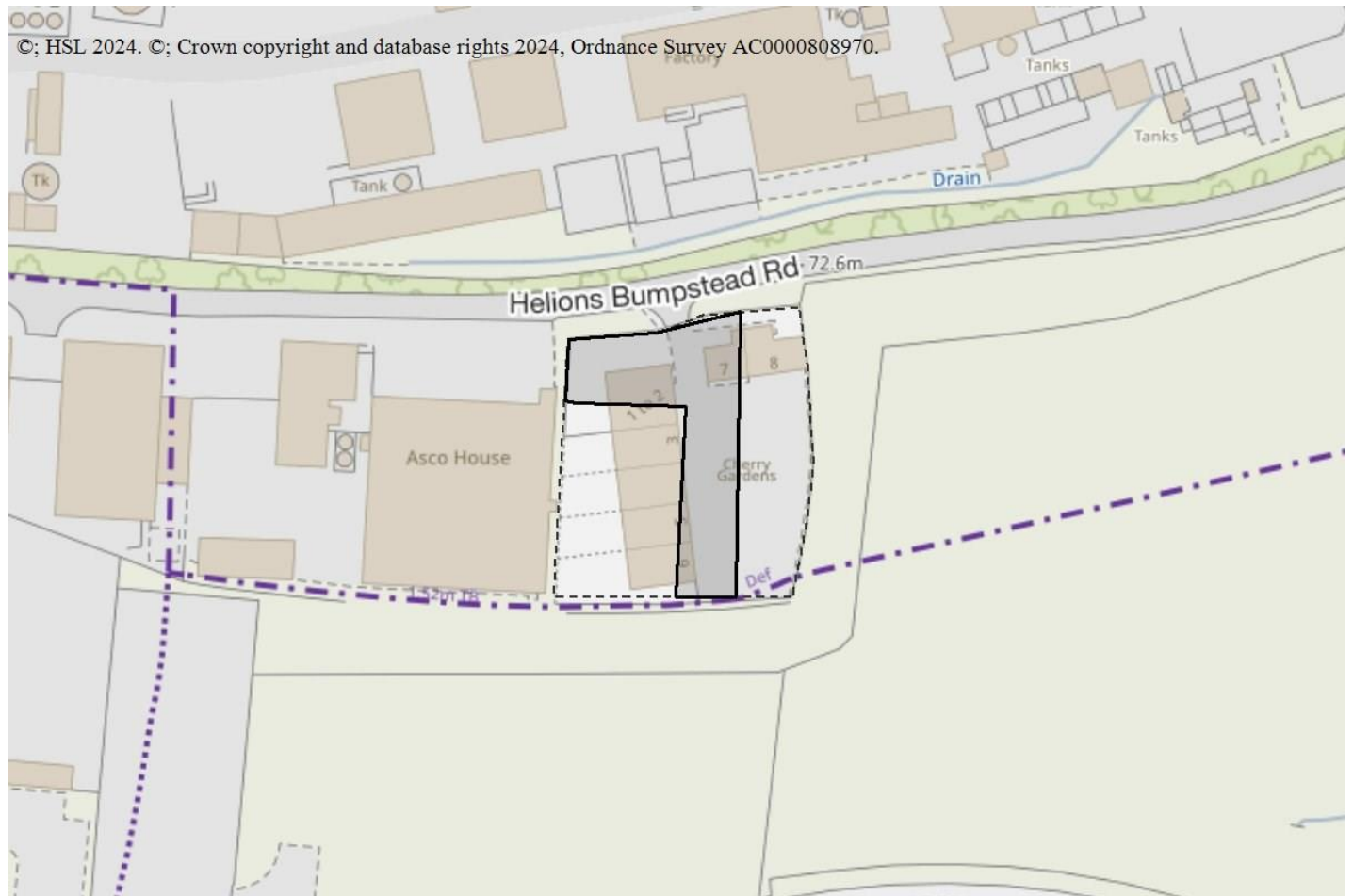
Are there 100 or more occupants in any individual workplace building (that lie partly or wholly within a consultation distance)? No

Are there 3 or more occupied storeys in any workplace building (that lie partly or wholly within a consultation distance)? No



Parking Areas : Do Not Advise Against

Is this a parking area with no other associated facilities, car parks which are part of another development type should be included within that development type Yes



This advice report has been generated using information supplied by Alexa Burlow at West Suffolk on 26 February 2024.

Note that any changes in the information concerning this development would require it to be re-submitted.