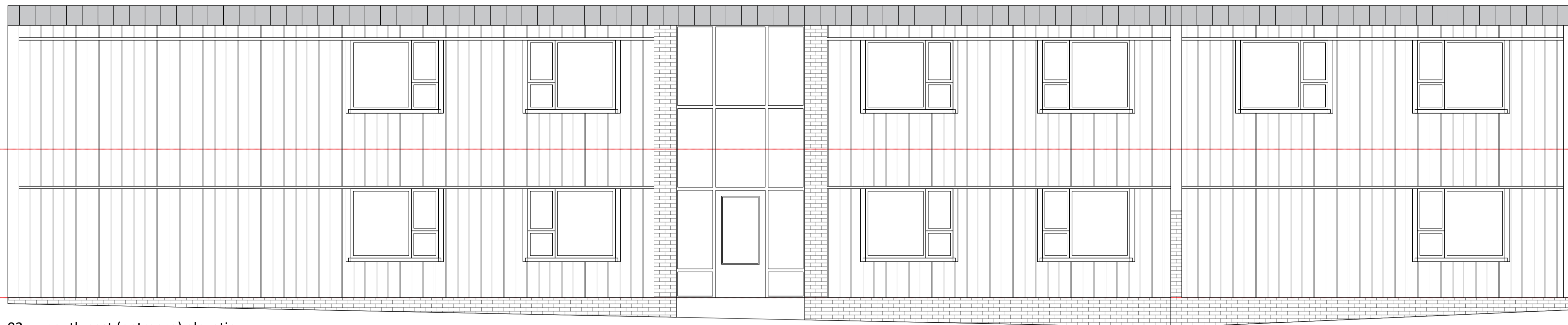
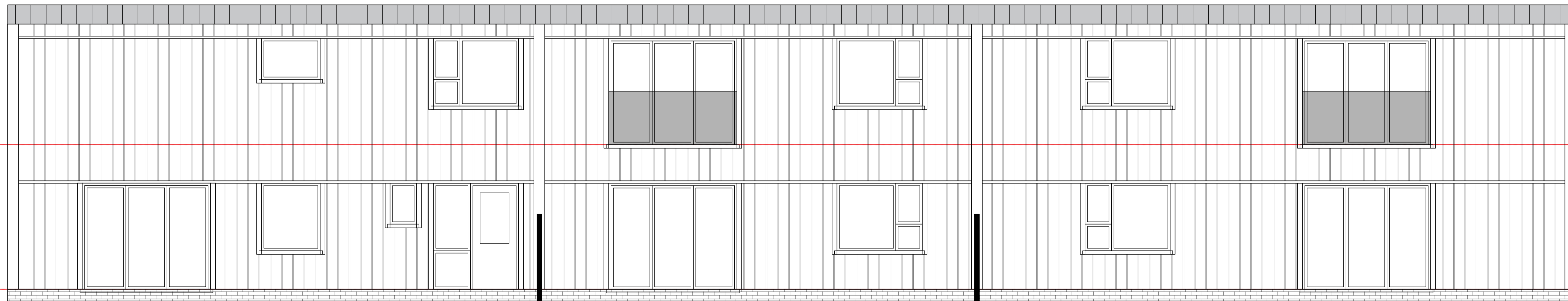


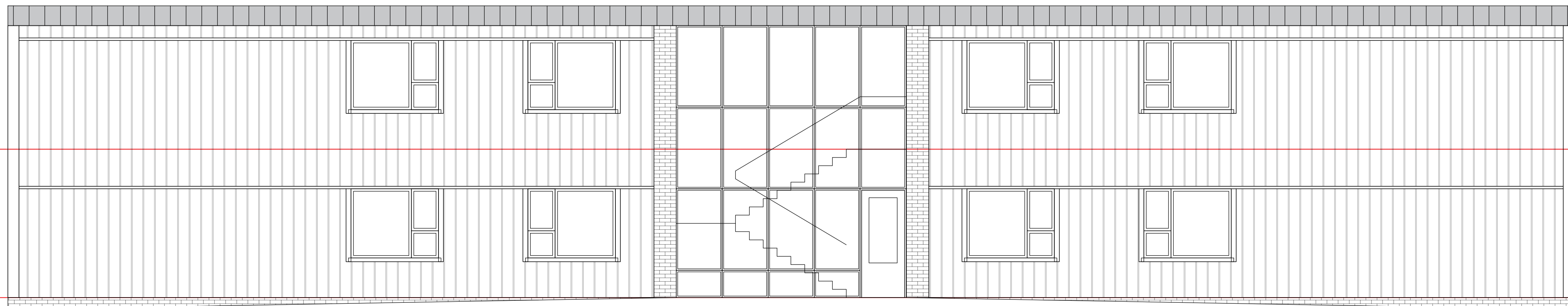
01 south west elevation



02 south east (entrance) elevation

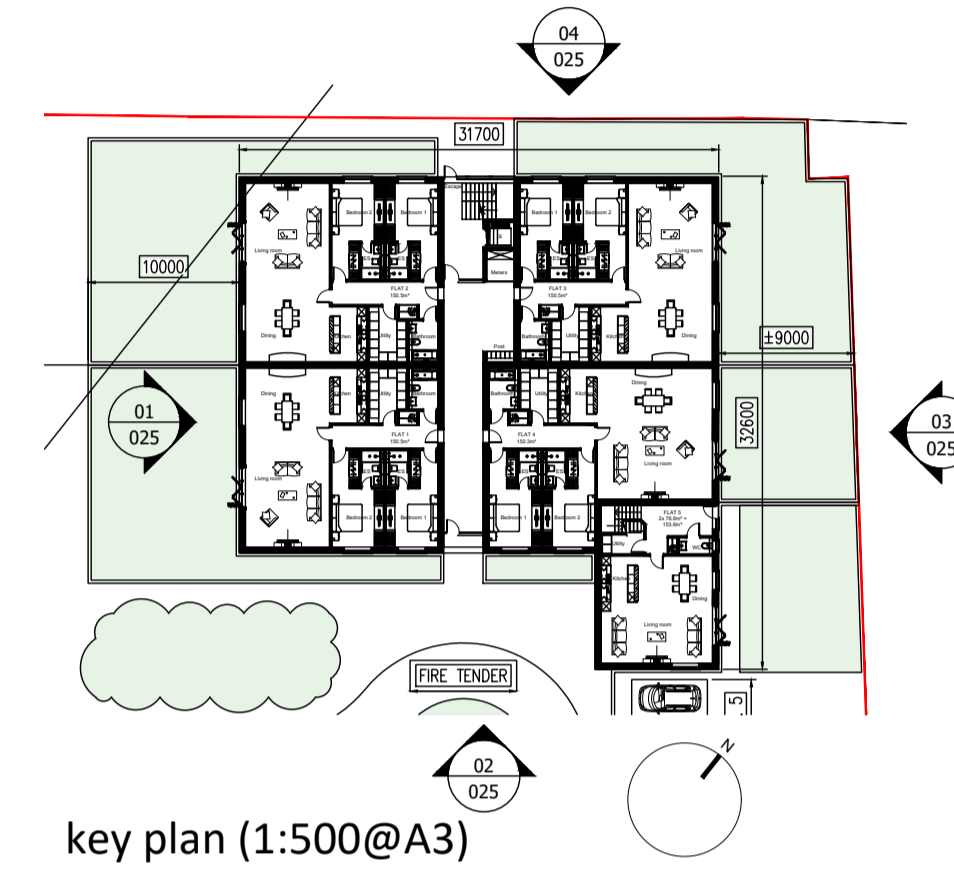


03 north east elevation



04 north west elevation

- Materials**
1. Dark grey engineering brick piers and plinths.
 2. Metal cladding with metal roof coping and trims, as existing.
 3. All windows and external doors in metal frames.



CBA
 CHARTERED ARCHITECT
 Tel - 07771 887 691 - e-mail - charlie.biss@btinternet.com

client MK Associates Ltd		
project Conversion of existing light industrial unit to create nine apartments. Hazel Stub Depot, Burton End Haverhill, Suffolk, CB9 9AF		
drawing Elevations, proposed		
-		
date 13/10/22	scale 1:50@A1	drawn by AB
drg.no. TEO-025	revision -	

© 2019 CHARLIE BISS - ALL RIGHTS RESERVED