

ALL WORKING DIMENSIONS TO BE CHECKED ON SITE. FIGURED DIMENSIONS TO BE TAKEN IN PREFERENCE TO SCALED DIMENSIONS. ANY DISCREPANCIES BETWEEN DRAWINGS OF DIFFERING SCALES AND BETWEEN DRAWINGS AND SPECIFICATION WHERE APPROPRIATE TO BE NOTIFIED TO SUPERVISING OFFICER FOR DECISION. COPYRIGHT RESERVED.

Build in 2 no. 1500 x 1500mm double-glazed white upvc windows complete with Catnic or similar approved lintel over. Include for Thermabate or similar approved cavity closers to reveals. Install steel post between to support end of roof ridge beam. Build in triangular windows over (see elevations) to gable ends.

Build in 2 no. 1500 x 1050mm double-glazed white upvc windows complete with Catnic or similar approved lintel over. Include for Thermabate or similar approved cavity closers to reveals. Install steel post between to support end of roof ridge beam. Build in triangular windows over (see elevations) to gable ends.

External wall finish to be smooth render painted white over 100mm blockwork outer skin; 150mm cavity filled with Dri-Therm 32 cavity insulation batts; 100mm Celcon Solar blockwork inner skin. Internal wall finish to be skim coat plaster finish to 12.5mm plasterboard on adhesive dabs applied to face of blockwork.

Build in 900 x 2100mm double-glazed white upvc door and frame complete with Catnic or similar approved lintel over. Include for Thermabate or similar approved cavity closers to reveals.

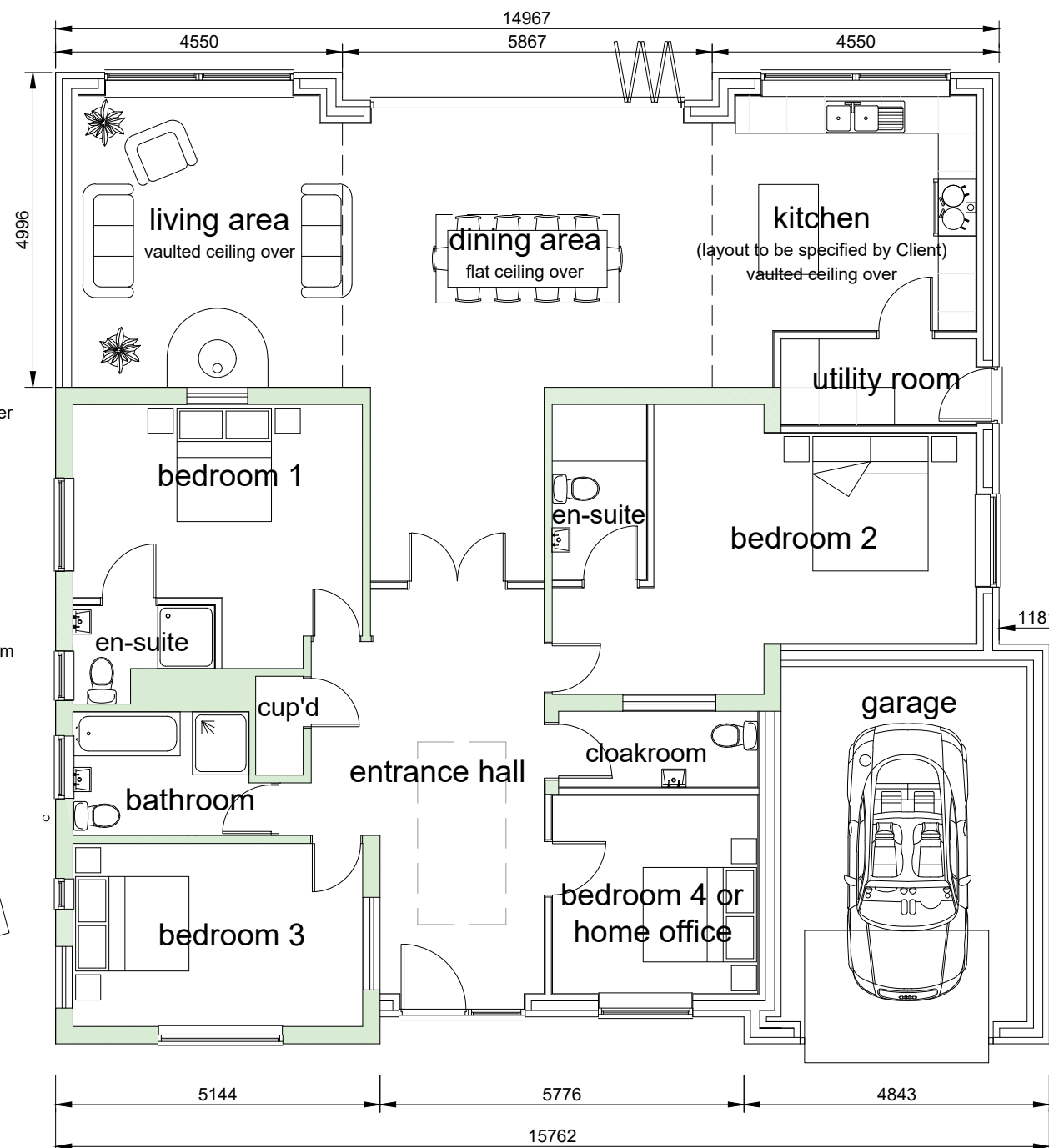
Build in 900 x 1200mm double-glazed white upvc window complete with Catnic or similar approved lintel over. Include for Thermabate or similar approved cavity closers to reveals.

Build in bespoke garage door and frame with Catnic or similar approved lintel over. Include for Thermabate or similar approved cavity closers to reveals.

Extg. face brick external walls to be finished with a smooth render painted white.

Remove extg. door and frame, build in 800 x 1050mm double-glazed white upvc window and infill opening below.

Remove extg. door and frame and infill opening.



Proposed Ground Floor Layout Plan

PROJECT	
4, Hill Crescent, Bury Road, Haverhill, Suffolk. CB9 0DF	
CLIENT Mr Mark Wilsher	
DETAIL Proposed ground floor layout plan.	
<b>Alan Baker Architectural Services</b> 55, Back Road, Linton, Cambridge. CB21 6JF 01223 893516	
DATE November 2023	DRAWN BY Alan Baker
SCALE 1 : 100	CHECKED BY
DRAWING NO. 2023/284 - PL04	REVISION