

TG30(C)

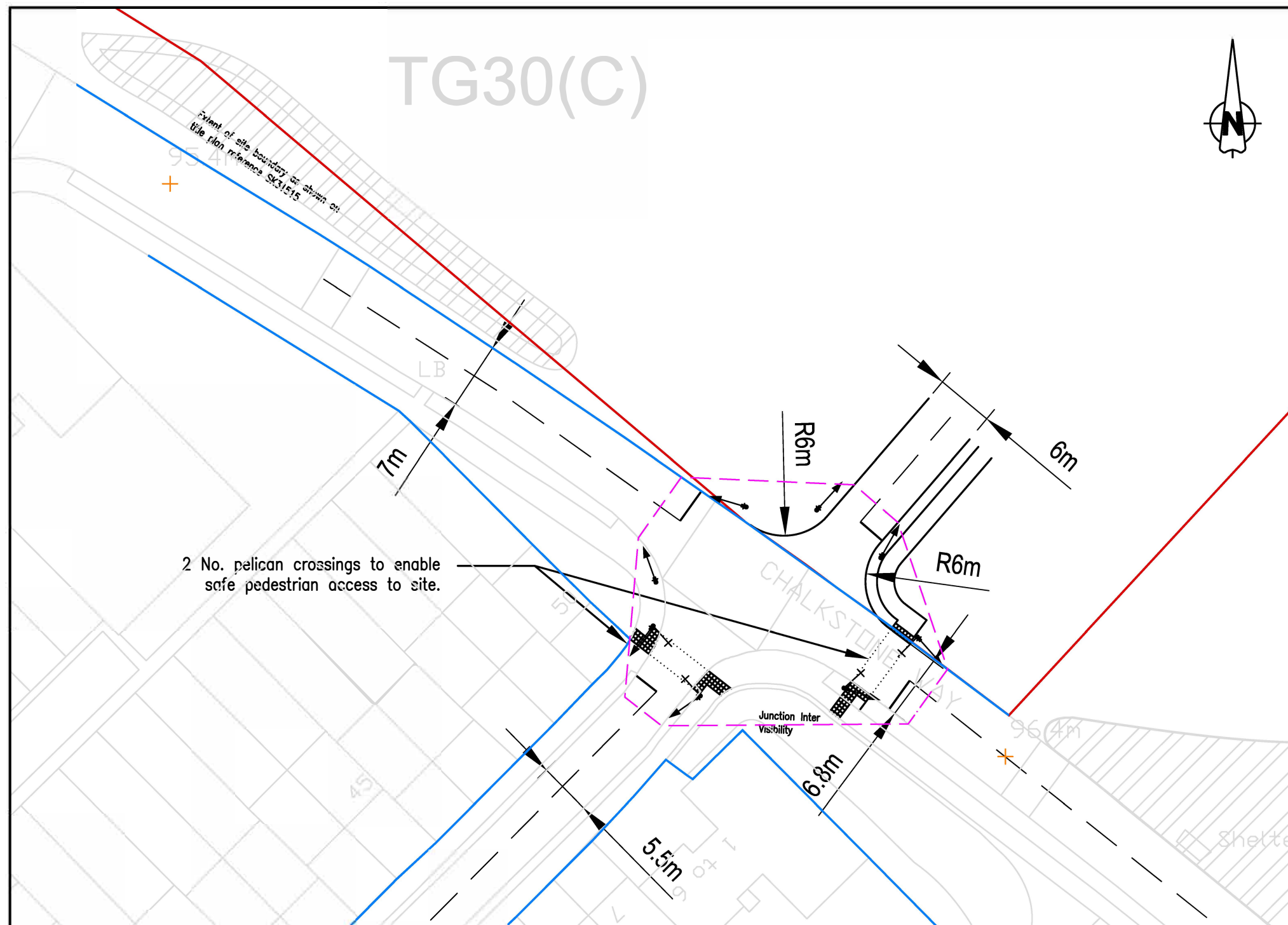


Notes:

1. Do not scale from this drawing.
2. This drawing has been based on survey data provided by a third party. Brookbanks Consulting Ltd cannot be held responsible for the accuracy of this information.
3. The junction and links have been designed in accordance with the relevant DMRB standards TD 9/93 and TD 42/95.
4. The markings have been designed in accordance with the Traffic Signs Manual Chapter 5.

KEY

- Application Boundary
- Highway Boundary



2 No. pelican crossings to enable safe pedestrian access to site.

G	Consideration of Road Safety Audit.	MM	LW	PB	13.1.16
F	Highway boundary/signal head modified.	MM	LW	PB	24.9.15
E	Highway boundary/signal head modified.	MM	LW	PB	17.9.15
D	Highway boundary modified	MM	LW	PB	16.9.15
C	Highway boundary added	MM	LW	PB	30.4.15
B	Additional information and requirements.	MM	LW	PB	08.1.15
A	Land boundaries updated. Access design revised.	RM	PB	PB	06.9.12

Rev	Revision Details	Drawn	Checked	Approved	Date
	PRELIMINARY				28/08/12
	Issue Status		Approved		Date
	Drawn RM	Checked PAB			Date 28/08/12

Hallam Land Management Ltd
and Mrs Pelly

GREAT WILSEY PARK
HAVERHILL

Development Access
CHALKSTONE WAY

© Brookbanks Consulting Limited 2012

Brookbanks
Consulting

6150 Knights Court Solihull Parkway Birmingham B37 7WY
Tel (0121) 329 4330 Fax (0121) 329 4331
www.brookbanks.com

Scale at A3 1:500	Drawing No. 10173/HL/02	Rev. G
----------------------	----------------------------	-----------