

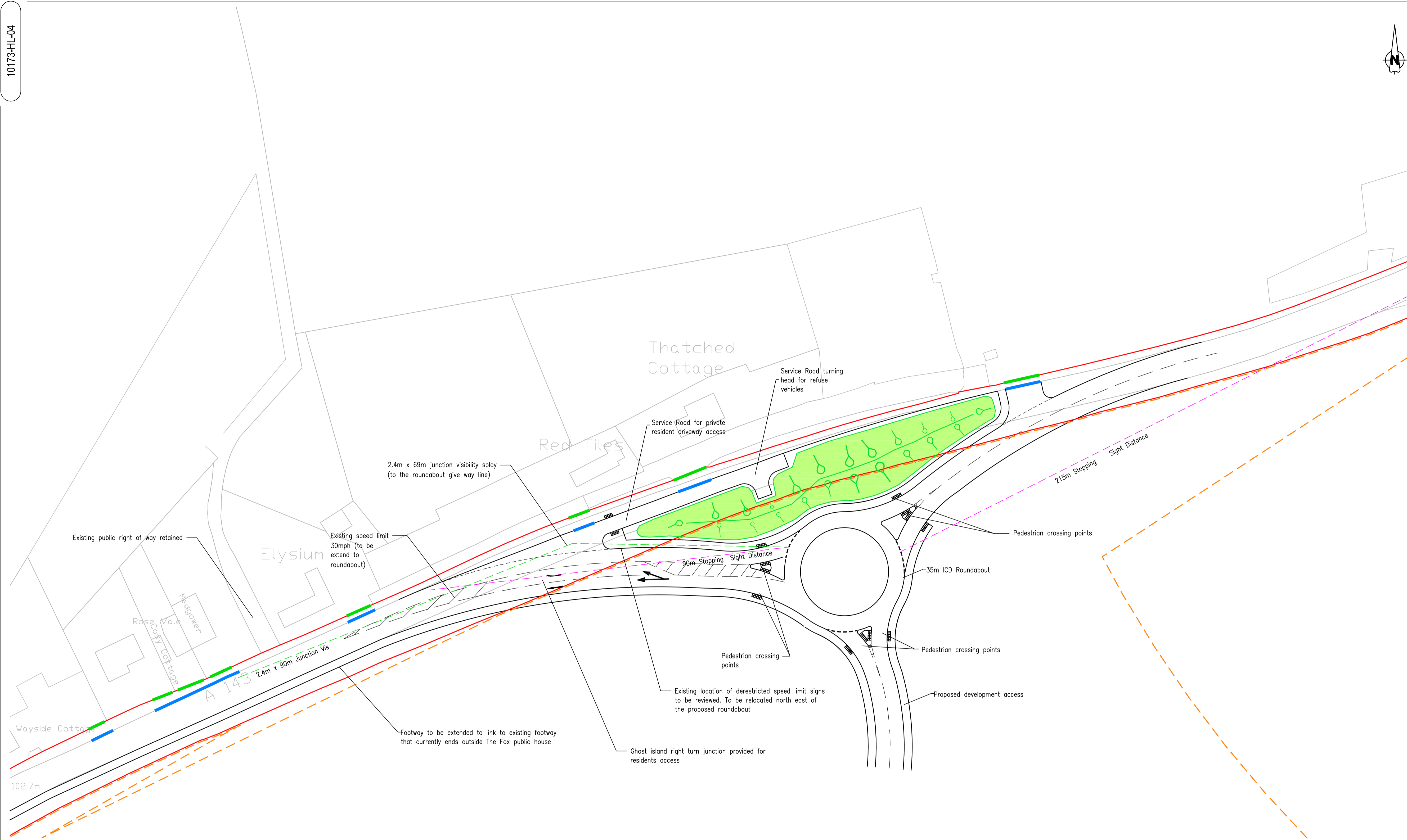


**Notes:**

1. This drawing is to be read in conjunction with 10208-HL-01, 02, 03, 04, 05 and 07.
2. Do not scale from this drawing.
3. This drawing has been based on survey data provided by a third party. Brookbanks Consulting Ltd cannot be held responsible for the accuracy of this information.
4. The junctions, roundabouts and links have been designed in accordance with the following DMRB standards:
  - TA 23/81: Junctions and Accesses – Determination of Size of Roundabouts and Major–Minor Junctions
  - TD 9/93: Highway Link Design
  - TD 16/07: Geometric Design of Roundabouts
  - TD 42/95: Geometric Design of Major–Minor Priority Junctions.
5. The markings have been designed in accordance with the Traffic Signs Manual Chapter 5.
6. The road signs have been designed and position in accordance with the Traffic Signs Manual Chapters 3 and 7.

**KEY**

- Highway Boundary
- - - Development Boundary
- - - Forward Visibility Splay
- - - Junction Visibility Splay
- Existing Private Driveway
- Proposed Dropped Vehicular Crossing
- Area of landscaping bund (to be planted)



D	Roundabout relocated	MM	LW	PAB	Aug 15
C	Roundabout relocated and drawing frame changed	MM	LW	PAB	Jul 15
Rev.	Revision Details	Drawn	Checked	Approved	Date
For Application					Jul 2015
Issue Status				Approved	Date
Drawn	MM	Checked	LW	Date	JUL 2015



6150 Knights Court Solihull Parkway Birmingham B37 7WY  
 Tel (0121) 329 4330 Fax (0121) 329 4331  
 www.brookbanks.com

Hallam Land Management Ltd  
 and Mrs Pelly

Great Wilsey Park  
 Haverhill

Development Access  
 HAVERHILL ROAD

Scale at A1	Drawing No.	Rev.
1:500	10173-HL-04	D