

22 OCT 2015

Appendix 8.1 Noise Monitoring



A143 Haverhill Road



Chalkstone Way



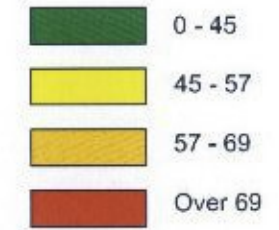
Coupals Road



Water Lane

Key:

Levels in dB:



Rev	Revision Details	Drawn	Checked	Approved	Date
	PRELIMINARY				MAR 15
	Issue Status		Approved		Date
Drawn	MM	Checked	AE	Date	19/03/15



GREAT WILSEY PARK
HAVERHILL

2015 BASELINE
NIGHT TIME NOISE CONTOURS

© Brookbanks Consulting Limited 2014

Brookbanks
Consulting

6150 Knights Court, Solihull Parkway, Birmingham, B37 7WY
Tel (0121) 329 4330 Fax (0121) 329 4331
www.brookbanks.com

Scale at A3	Drawing No.	Rev.
NTS	10173-NM-02	-



A143 Haverhill Road



Chalkstone Way



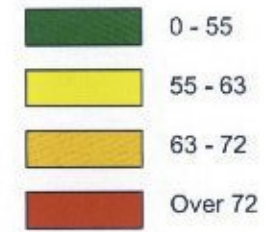
Coupals Road



Water Lane

Key:

Levels in dB:



Rev	Revision Details	Drawn	Checked	Approved	Date
	PRELIMINARY				MAR 15
	Issue Status		Approved		Date
Drawn	MM	Checked	AE	Date	19/03/15



GREAT WILSEY PARK
HAVERHILL

© Brookbanks Consulting Limited 2014

2015 BASELINE
DAYTIME NOISE CONTOURS

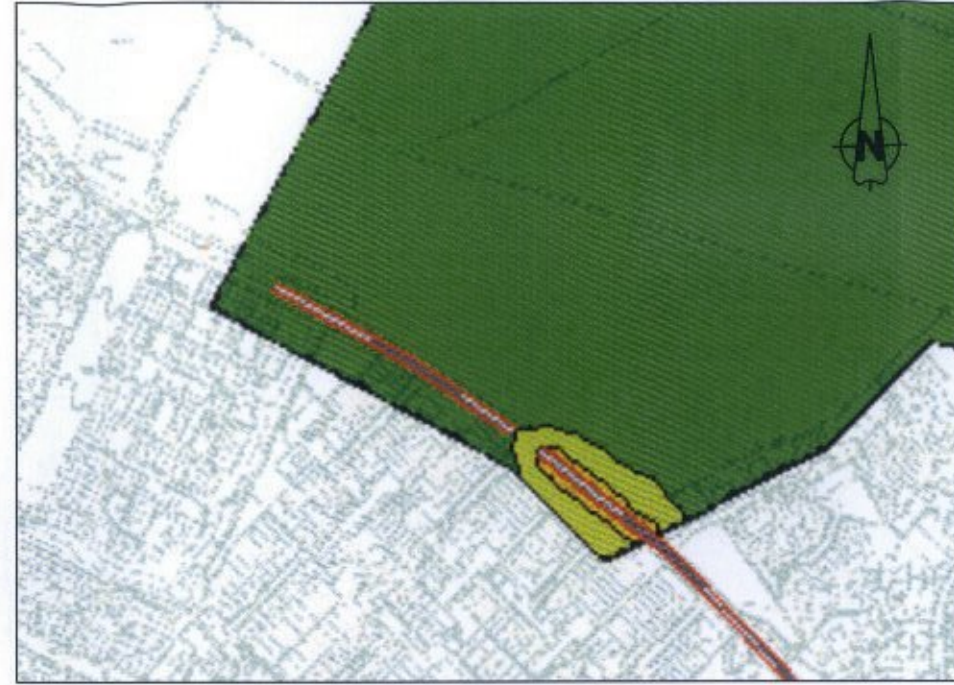


8150 Knights Court, Solihull Parkway, Birmingham B37 7WY
Tel (0121) 329 4330 Fax (0121) 329 4331
www.brookbanks.com

Scale at A3	Drawing No.	Rev.
NTS	10173-NM-01	-



A143 Haverhill Road



Chalkstone Way



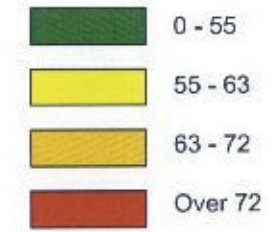
Coupals Road



Water Lane

Key:

Levels in dB:



Rev	Revision Details	Drawn	Checked	Approved	Date
	PRELIMINARY				MAR 15
	Issue Status		Approved		Date
Drawn	MM	Checked	AE	Date	19/03/15



GREAT WILSEY PARK
HAVERHILL

2029 FUTURE BASELINE
DAYTIME NOISE CONTOURS

© Brookbanks Consulting Limited 2014

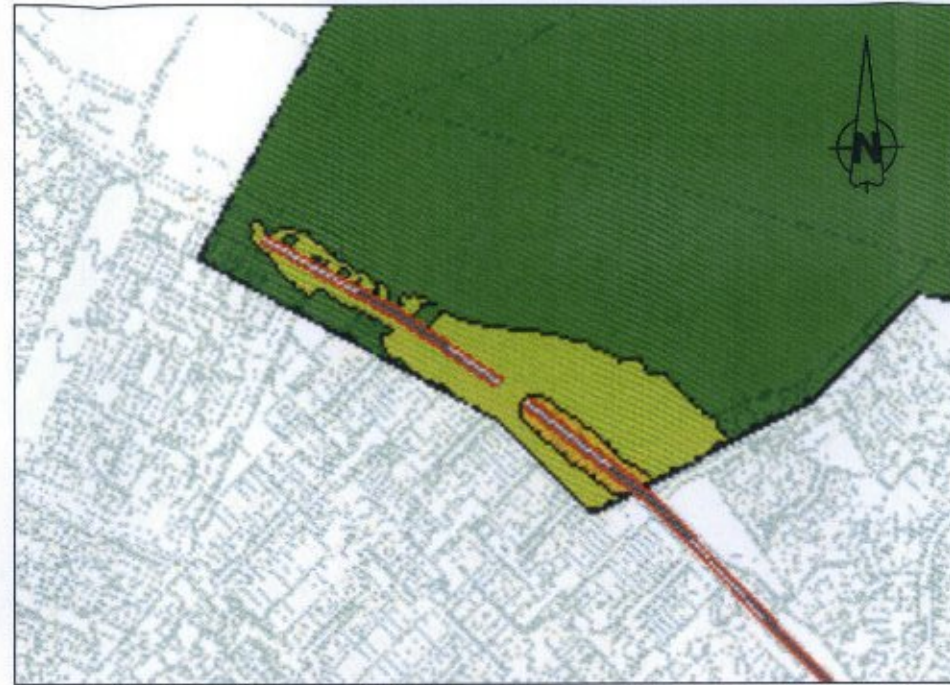
Brookbanks
Consulting

6150 Knights Court, Solihull Parkway, Birmingham B37 7WY
Tel (0121) 329 4330 Fax (0121) 329 4331
www.brookbanks.com

Scale at A3	Drawing No.	Rev.
NTS	10173-NM-03	-



A143 Haverhill Road



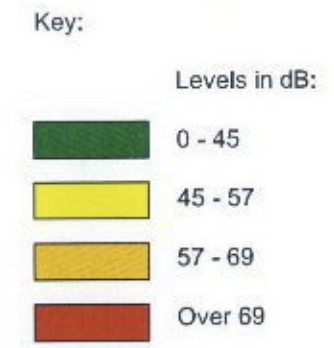
Chalkstone Way



Coupals Road



Water Lane



Rev	Revision Details	Drawn	Checked	Approved	Date
	PRELIMINARY				MAR 15
	Issue Status		Approved		Date
Drawn	MM	Checked	AE	Date	19/03/15



GREAT WILSEY PARK
HAVERHILL

2029 FUTURE BASELINE
NIGHT TIME NOISE CONTOURS

© Brookbanks Consulting Limited 2014

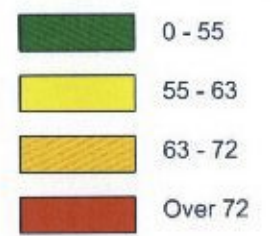


6150 Knights Court Solihull Parkway Birmingham B37 7WY
Tel (0121) 329 4330 Fax (0121) 329 4331
www.brookbanks.com

Scale at A3	Drawing No.	Rev.
NTS	10173-NM-04	-

Key:

Levels in dB:



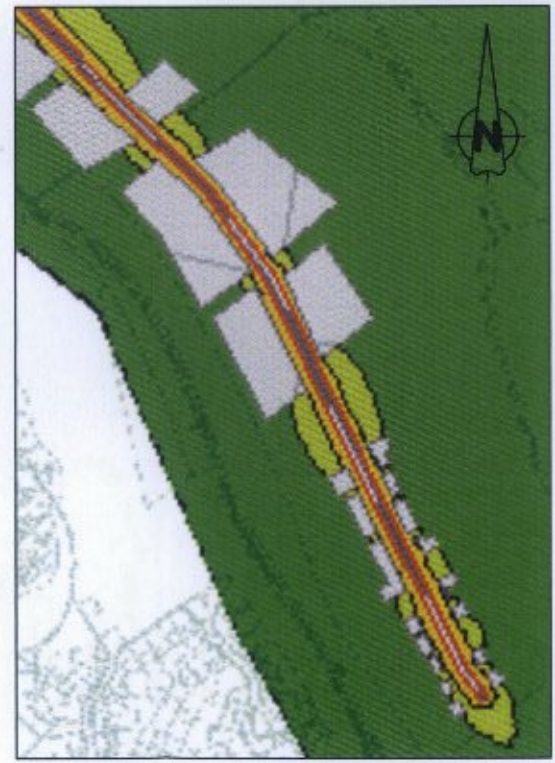
A143 Haverhill Road and Northern Development Access Road



Northern Development Access Road, Southern Development Access Road and Chalkstone Way



Southern Development Access Road and Chalkstone Way



Southern Development Access Road



Coupals Road and Water Lane

© Brookbanks Consulting Limited 2014

Brookbanks
Consulting

6150 Knights Court, Solihull Parkway, Birmingham, B37 7WY
Tel (0121) 329 4330 Fax (0121) 329 4331
www.brookbanks.com

Rev	Revision Details	Drawn	Checked	Approved	Date
	PRELIMINARY				MAR 15
	Issue Status		Approved		Date
Drawn	MM	Checked	AE	Date	19/03/15



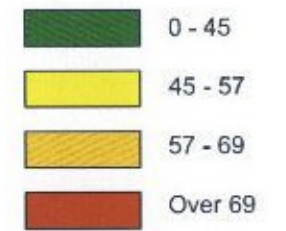
GREAT WILSEY PARK
HAVERHILL

2029 WITH DEVELOPMENT
DAYTIME NOISE CONTOURS

Scale at A3	Drawing No.	Rev.
NTS	10173-NM-05	-

Key:

Levels in dB:



A143 Haverhill Road and Northern Development Access Road



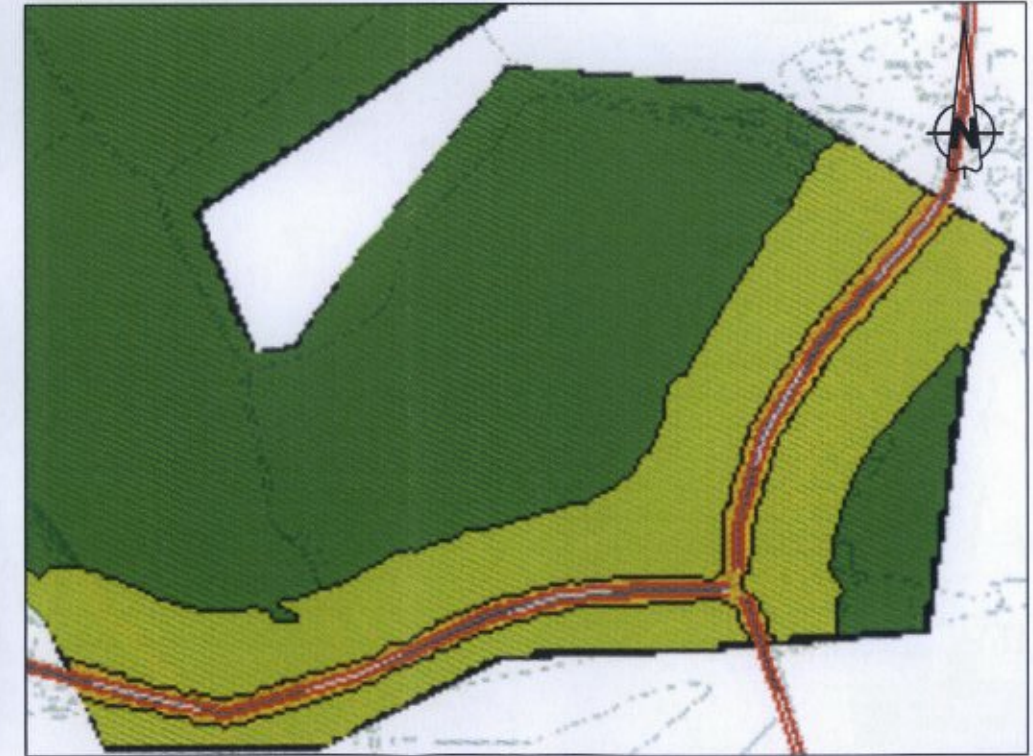
Northern Development Access Road, Southern Development Access Road and Chalkstone Way



Southern Development Access Road and Chalkstone Way



Southern Development Access Road



Coupals Road and Water Lane

Rev	Revision Details	Drawn	Checked	Approved	Date
	PRELIMINARY				MAR 15
	Issue Status		Approved		Date
Drawn	MM	Checked	AE	Date	19/03/15



GREAT WILSEY PARK
HAVERHILL

2029 WITH DEVELOPMENT
NIGHT TIME NOISE CONTOURS

© Brookbanks Consulting Limited 2014



6150 Knights Court Solihull Parkway Birmingham B37 7WY
Tel (0121) 329 4330 Fax (0121) 329 4331
www.brookbanks.com

Scale at A3	Drawing No.	Rev.
NTS	10173-NM-06	-