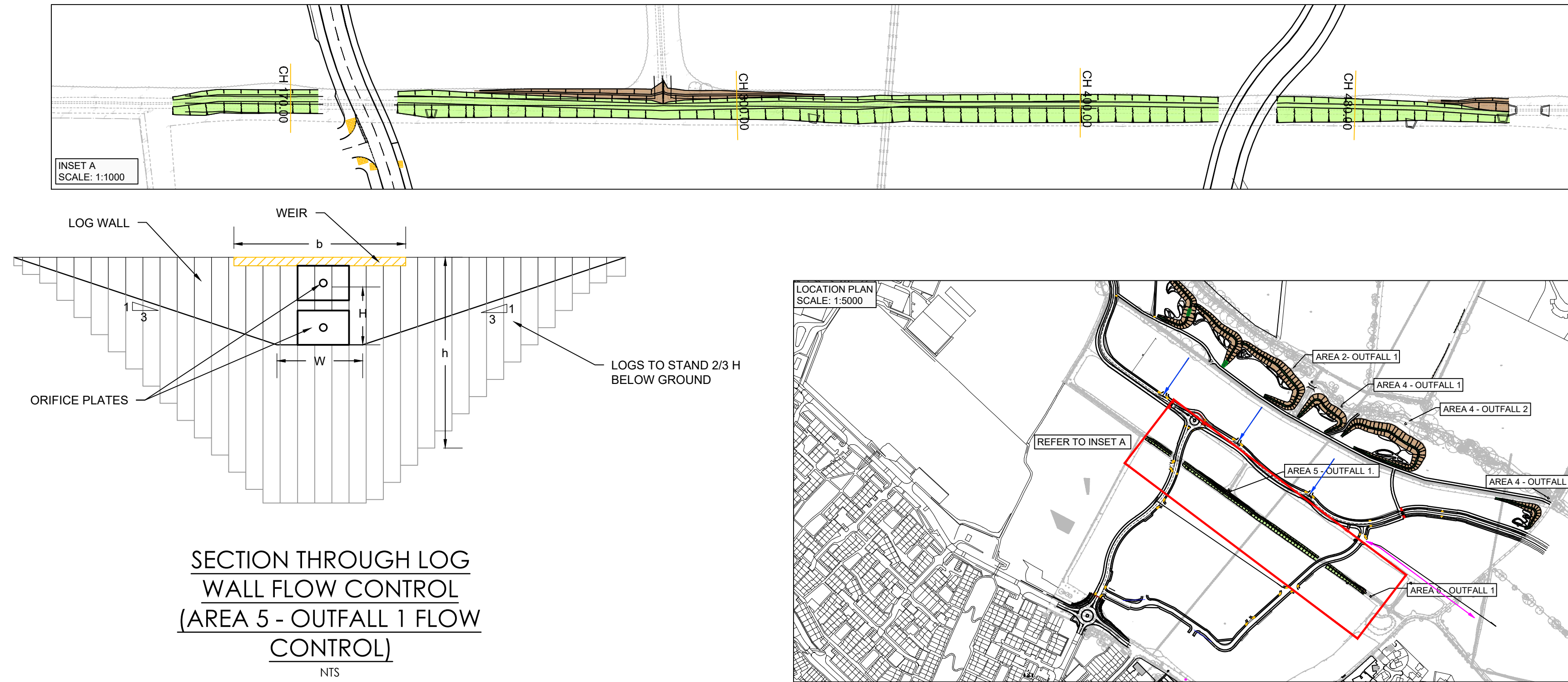


**CROSS SECTIONS KEY:**

- PROPOSED GROUND PROFILE
- - - EXISTING GROUND PROFILE
- - - 1 IN 1 STORM WATER PROFILE
- 1 IN 30 STORM WATER PROFILE
- 1 IN 100 +30% CC STORM WATER PROFILE

HORIZONTAL SCALE 1:250  
VERTICAL SCALE 1:50



Swale 03		
Depth (m)	Area (m <sup>2</sup> )	Cumulative Volume (m <sup>3</sup> )
0.150	599	79
0.250	866	130
0.500	258	344
0.750	1515	890
1.000	1785	1407
1.250	1089	1611
1.500	2100	1917

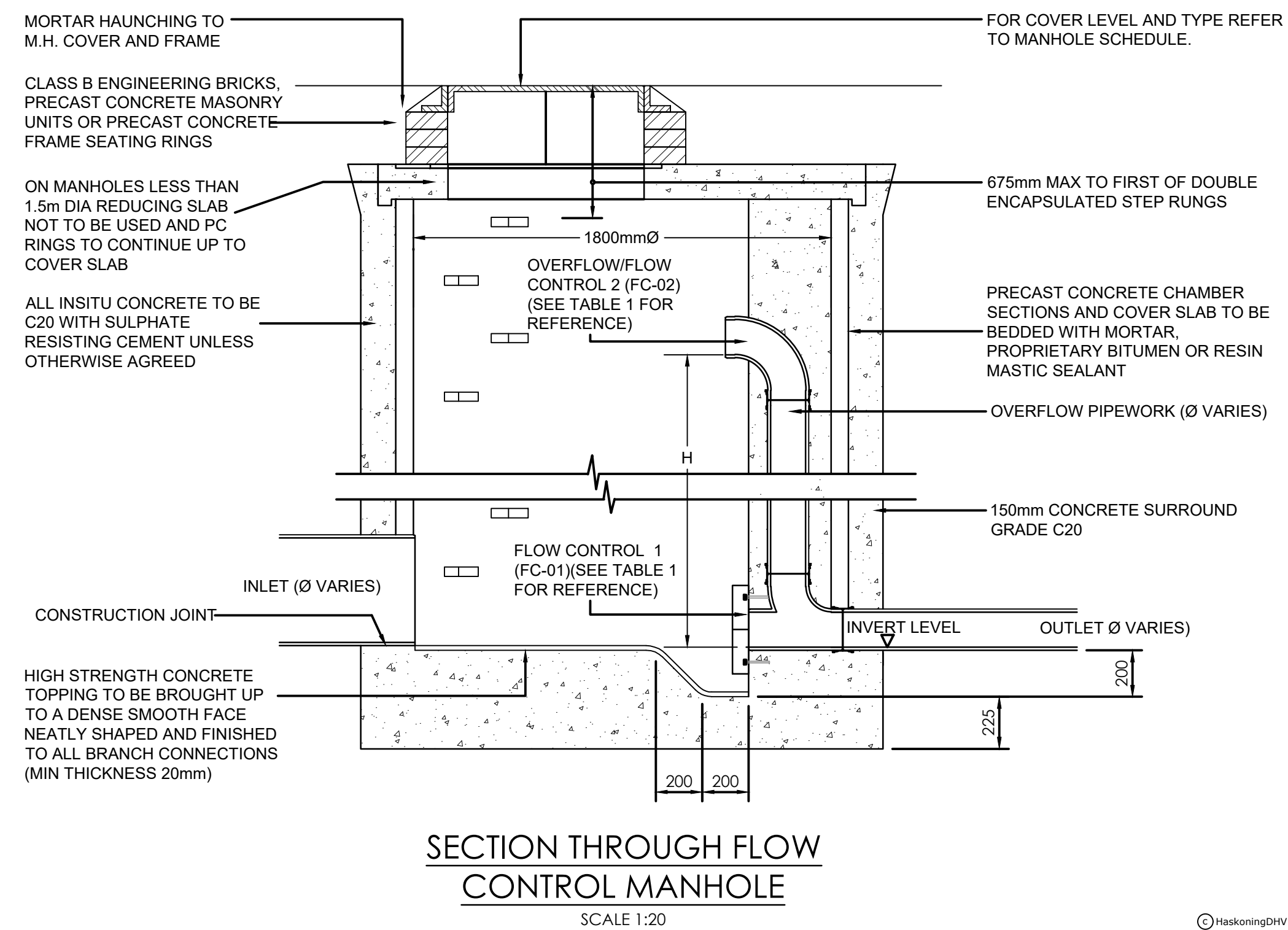
Swale 04		
Depth (m)	Area (m <sup>2</sup> )	Cumulative Volume (m <sup>3</sup> )
0.150	124	19
0.250	161	29
0.500	218	79
0.750	285	130
1.000	366	216
1.250	461	309

TABLE 2 - SWALES VOLUME DETAILS

Catchment	Greenfield Conditions			Networks													
	Required Discharge rates (l/s/25)			Outfall - Flow control system					Discharge rates (Q)/Water levels (WL)								
	Q1 in 1	Q1 in 30	Q1 in 100	Outfall number	OS Pipe number	Manhole number	Cover Level	Invert Level	Flow control Ref.	Type	Depth Above Invert (mm)	Q1 in 1	Q1 in 30	Q1 in 100			
Area 5	4.37	11.00	30.10	Area 5 Outfall 1	1.004	86.30 FC	02.000	90.420	FC05-01	Ø90mm Plate	150	5.30	90.900	10.70	91.422	14.00	91.880
									FC05-02	Ø50mm Plate	700						
									TOTAL			5.30	10.70	14.00			

Catchment	Greenfield Conditions			Networks													
	Required Discharge rates (l/s/25)			Outfall - Flow control system					Discharge rates (Q)/Water levels (WL)								
	Q1 in 1	Q1 in 30	Q1 in 100	Outfall number	OS Pipe number	Manhole number	Cover Level	Invert Level	Flow control Ref.	Type	Depth Above Invert (mm)	Q1 in 1	Q1 in 30	Q1 in 100			
Area 6	1.44	3.62	6.31	Area 6 Outfall 1	1.002	90.15 FC	91.300	90.070	FC00-01	Hydrobrake	150	1.40	90.489	1.800	90.821	5.10	91.130
									FC00-02	Ø65mm Orifice	800						
									TOTAL			1.40	1.80	5.10			

TABLE 1 - DISCHARGE DETAILS



GENERAL NOTES

- DO NOT SCALE FROM THIS DRAWING.
- ALL DIMENSIONS ARE IN METRES UNLESS NOTED OTHERWISE.
- ALL LEVELS ARE IN METRES RELATIVE TO ORDNANCE DATUM NEWLYN UNLESS NOTED OTHERWISE.
- THIS DRAWING HAS BEEN BASED UPON SURVEY / OS INFORMATION SUPPLIED BY OTHERS, ROYAL HASKONING DHV SHALL NOT BE LIABLE FOR ANY INACCURACY OR DEFICIENCIES ARISING FROM IT.
- THIS DRAWING TO BE READ IN CONJUNCTION WITH ALL OTHER RELEVANT DRAWINGS.
- ALL MATERIALS AND WORKMANSHIP WILL BE AS SPECIFIED IN THE SPECIFICATION UNLESS NOTED OTHERWISE.
- ALL LEVELS, DIMENSIONS AND LOCATIONS ARE TO BE CHECKED BY THE MAIN CONTRACTOR PRIOR TO COMMENCEMENT OF ANY WORK ON SITE.

REV	DATE	DESCRIPTION	BY	CHK	APP
103	24.02.20	UPDATED POND LAYOUT	JBW	PV	DJ
102	17.02.20	UPDATED POND DISCHARGE RATES	JBW	PV	DJ
101	22.03.19	FIRST ISSUE	JBW	PV	DJ

REVISIONS

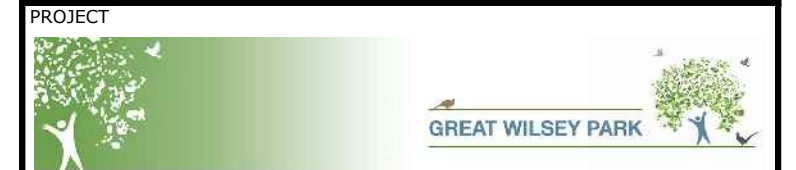
DRAWING STATUS

INFORMATION

CLIENT



PROJECT



TITLE

SWALES DETAILS

Portland Street, Manchester One, 9th Floor, Manchester, M1 3LF, Tel +44(0)161 2361018, Email info.manchester@uk.rdhv.com, Website www.royalhaskoning.com



DRAWN	CHECKED	APPROVED
JBW	PV	DJ
DATE	SCALE AT A1	PROJECT NUMBER
MAR-19	AS SHOWN	PB8301

DRAWING No. PB8301-RHD-DE-H1-DR-D-0557

REVISION I03