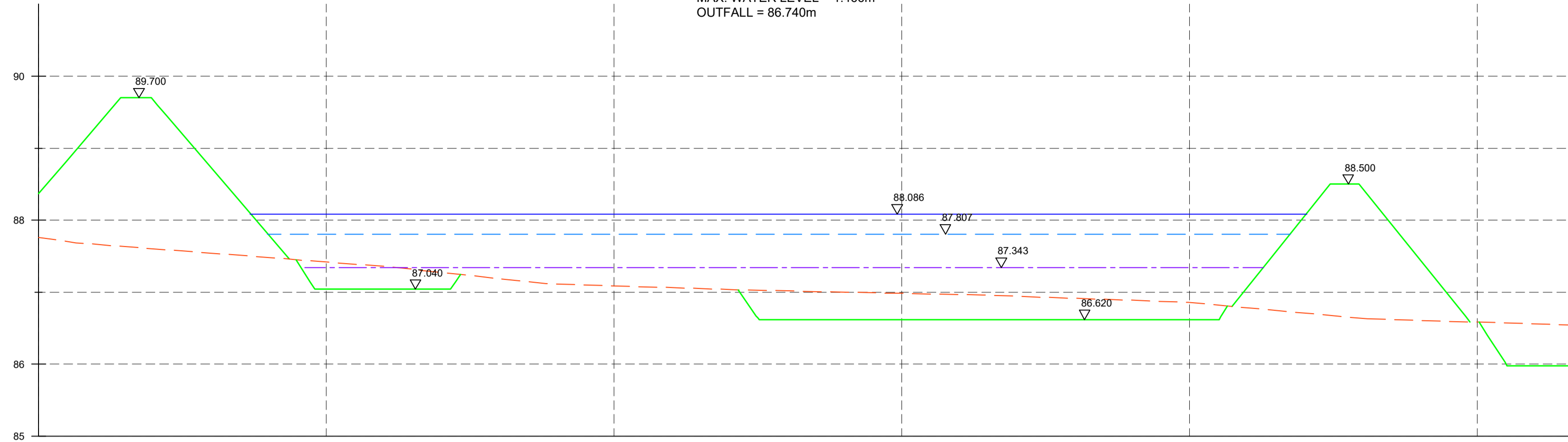
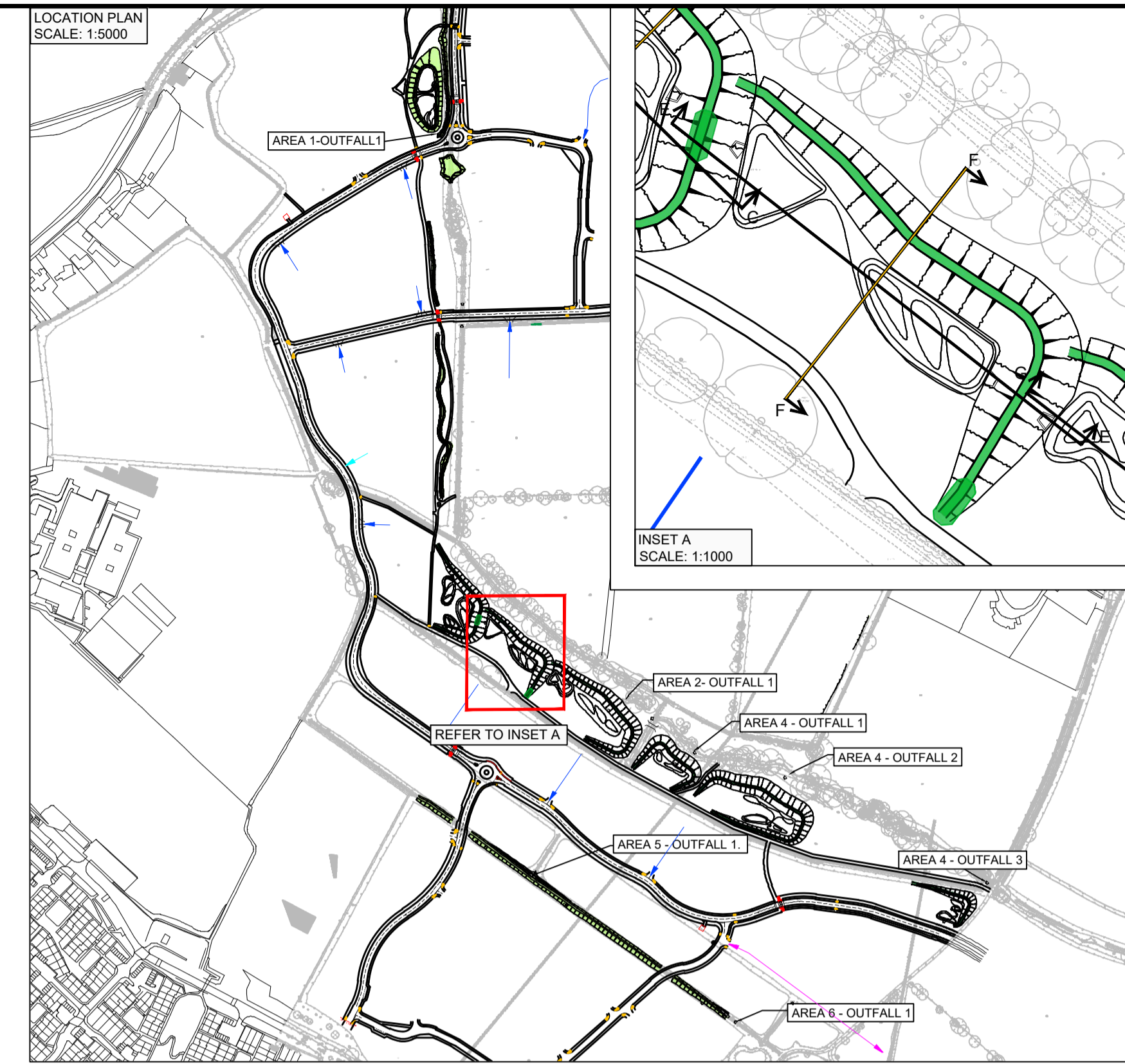
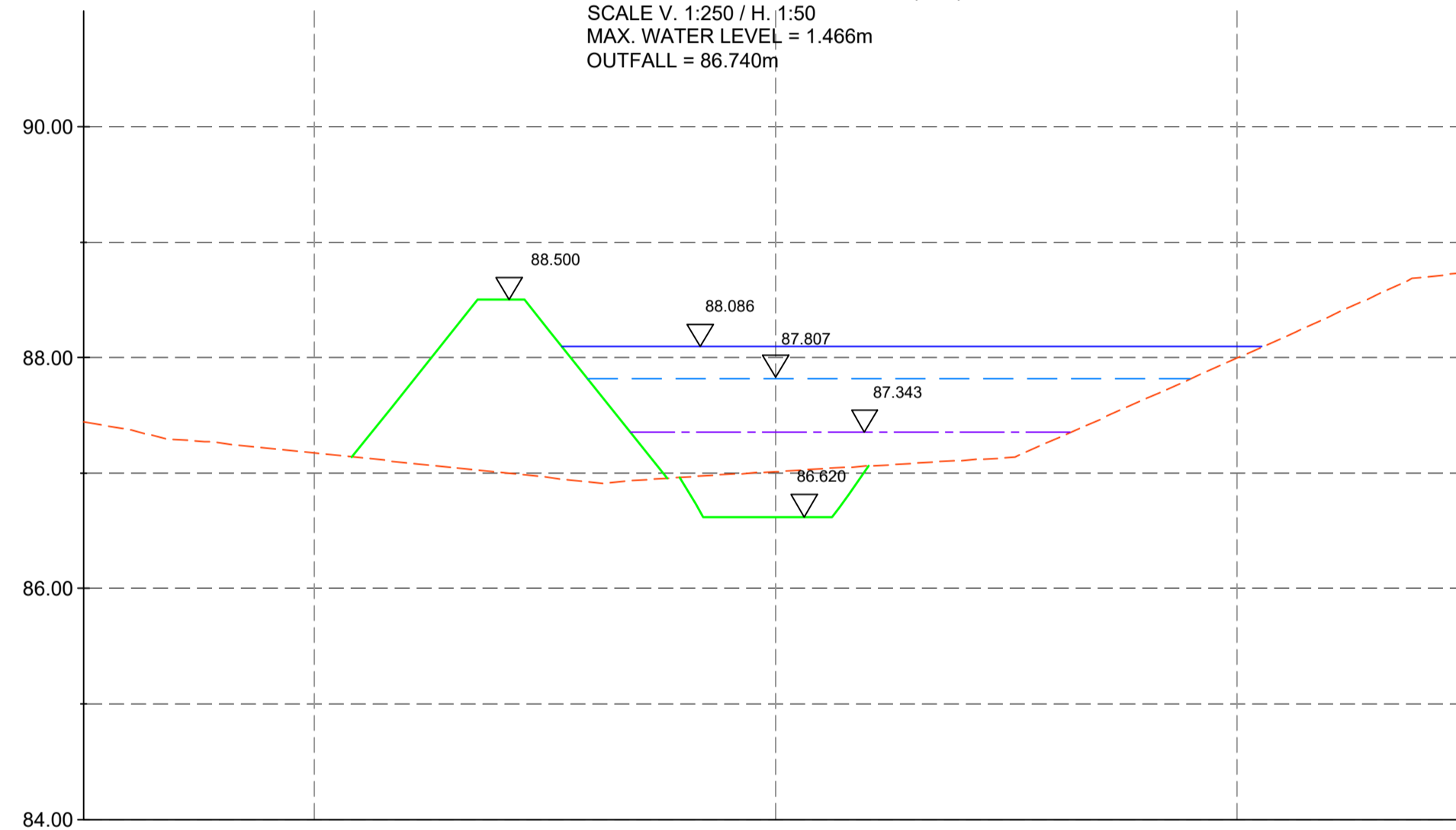


POND 2.2 LONGSECTION (E-E)
SCALE V. 1:250 / H. 1:50
MAX. WATER LEVEL = 1.466m
OUTFALL = 86.740m



POND 2.2 CROSS SECTION (F-F)
SCALE V. 1:250 / H. 1:50
MAX. WATER LEVEL = 1.466m
OUTFALL = 86.740m

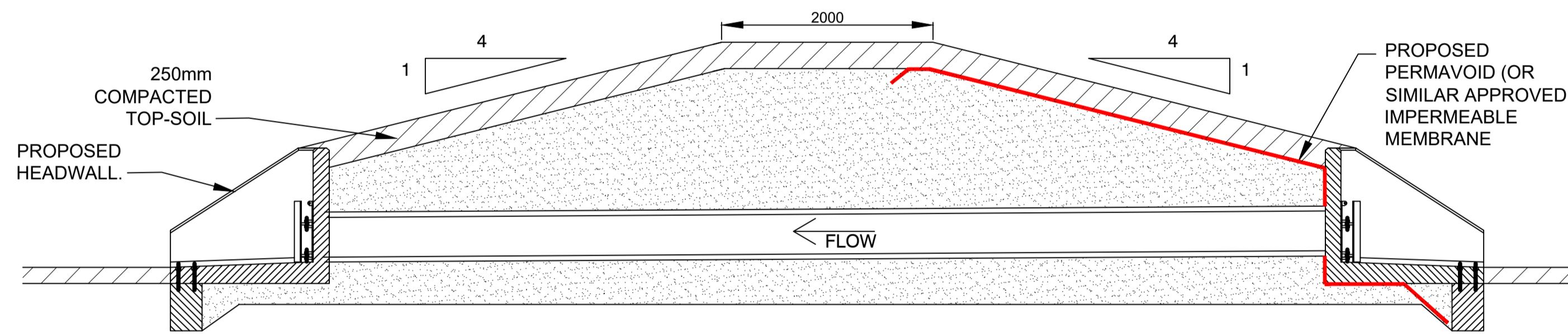


GENERAL NOTES

- DO NOT SCALE FROM THIS DRAWING.
- ALL DIMENSIONS ARE IN METRES UNLESS NOTED OTHERWISE.
- ALL LEVELS ARE IN METRES RELATIVE TO ORDNANCE DATUM NEWLYN UNLESS NOTED OTHERWISE.
- THIS DRAWING HAS BEEN BASED UPON SURVEY / OS INFORMATION SUPPLIED BY OTHERS, ROYAL HASKONING DHV SHALL NOT BE LIABLE FOR ANY INACCURACY OR DEFICIENCIES ARISING FROM IT.
- THIS DRAWING TO BE READ IN CONJUNCTION WITH ALL OTHER RELEVANT DRAWINGS.
- ALL MATERIALS AND WORKMANSHIP WILL BE AS SPECIFIED IN THE SPECIFICATION UNLESS NOTED OTHERWISE.
- ALL LEVELS, DIMENSIONS AND LOCATIONS ARE TO BE CHECKED BY THE MAIN CONTRACTOR PRIOR TO COMMENCEMENT OF ANY WORK ON SITE.

KEY

- CROSS/LONGITUDINAL SECTION
- EXISTING GROUND PROFILE
- PROPOSED GROUND PROFILE
- 1 IN 1 STORM WATER PROFILE
- 1 IN 30 STORM WATER PROFILE
- 1 IN 100 +30% CC STORM WATER PROFILE



TYPICAL DETENTION BASIN MOUND DETAIL (NTS)

| REV | DATE | DESCRIPTION | BY | CHK | APP |
|-----|----------|-------------------------------------|-----|-----|-----|
| 105 | 25/03/20 | UPDATED TO LOCAL AUTHORITY COMMENTS | JBW | PV | DJ |
| 104 | 23/03/20 | AMENDED TO LOCAL AUTHORITY COMMENTS | LZ | PV | DJ |
| 103 | 24/02/20 | UPDATED POND LAYOUT | JBW | PV | DJ |
| 102 | 11.02.20 | UPDATED POND DISCHARGE RATES | JBW | PV | DJ |
| 101 | 22.03.19 | FIRST ISSUE | JBW | PV | DJ |

REVISIONS

DRAWING STATUS

INFORMATION

CLIENT



PROJECT



TITLE

DETENTION BASIN 2.2
DETAILS

Royal HaskoningDHV
Enhancing Society Together

Portland Street,
 Manchester One, 9th Floor
 Manchester, M1 3LF
 Tel +44(0)161 2361018
 Email info.manchester@uk.rdhv.com
 Website www.royalhaskoning.com

| DRAWN | CHECKED | APPROVED |
|--------|-------------|----------------|
| JBW | PV | DJ |
| DATE | SCALE AT A1 | PROJECT NUMBER |
| MAR-19 | AS SHOWN | PB8301 |

| DRAWING No. | REVISION |
|----------------------------|----------|
| PB8301-RHD-DE-H1-DR-D-0552 | 105 |

| Catchment | Greenfield Conditions | | | Networks | | | | | | | | | | | | | |
|-----------|----------------------------------|----------|-----------|-------------------------------|----------------|----------------|-------------|--------------|-------------------|-------------|---------------------------------------|---------|----------|-----------|--------|--------|--------|
| | Required Discharge rates (IH124) | | | Outfall - Flow control system | | | | | | | Discharge rates(Q) / Water levels(WL) | | | | | | |
| | Q1 in 1 | Q1 in 30 | Q1 in 100 | Outfall number | DS Pipe number | Manhole number | Cover Level | Invert Level | Flow control Ref. | Type | Depth Above Invert(mm) | Q1 in 1 | Q1 in 30 | Q1 in 100 | | | |
| Area 2 | 14.57 | 38.69 | 53.70 | n/a | 8.009 | S2.46 | 89.70 | 87.90 | n/a | Ø375mm Pipe | 0 | | 88.366 | | 89.247 | | |
| | | | | n/a | 8.012 | S2.49 | 88.50 | 86.74 | n/a | Ø300mm Pipe | 0 | | 87.343 | | 87.807 | 88.086 | |
| | | | | Area 2 Outfall 1 | 8.016 | S2.53FC | 87.40 | 85.41 | FCC02-01 | Ø80mm Plate | 0 | 12.20 | 86.490 | 38.00 | 86.841 | 53.70 | 87.058 |
| | | | | | | | | FCC02-02 | Ø180mm Pipe | 1200 | | | | | | | |
| | | | | TOTAL | | | | | | | 12.20 | | 38.00 | | 53.70 | | |

TABLE 1 - DISCHARGE DETAILS

| Detention Basin 2.2 | | | |
|---------------------|-----------------------|---|------------------------------------|
| Depth(m) | Area(m ²) | Estimated Volume(m ³) (A*H*0.9 x H) | Cumulative Volume(m ³) |
| 0.150 | 679.6 | 101.9 | 101.9 |
| 0.000 | 1.9 | 0.0 | 101.9 |
| 0.250 | 233.9 | 29.6 | 131.4 |
| 0.500 | 368.6 | 77.0 | 208.2 |
| 0.750 | 612.6 | 126.1 | 334.3 |
| 1.000 | 1002.9 | 201.9 | 536.2 |
| 1.250 | 2266.3 | 407.4 | 943.6 |
| 1.500 | 2714.0 | 621.3 | 1564.9 |
| TOTAL | | 1564.93 | 1564.9 |

TABLE 2 - DETENTION BASIN 2.2 VOLUME DETAILS