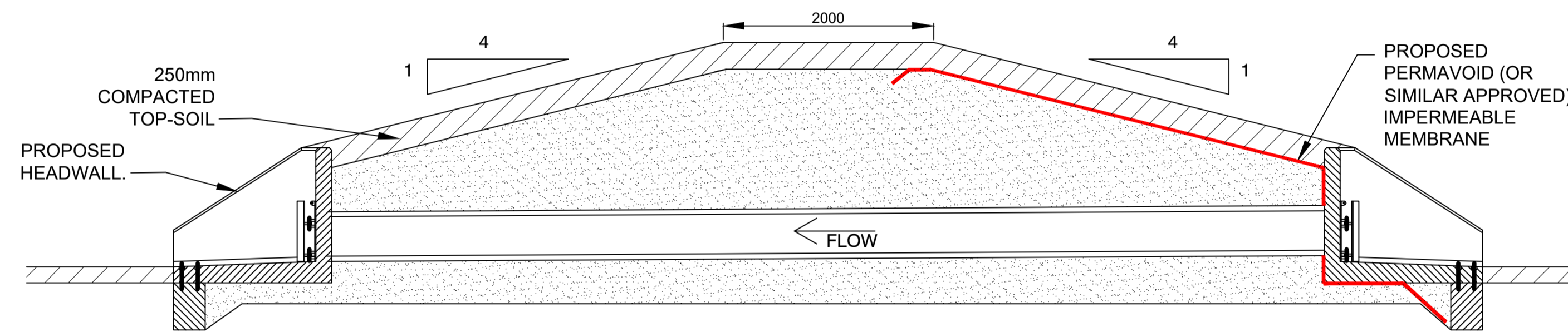


- GENERAL NOTES**
- DO NOT SCALE FROM THIS DRAWING.
  - ALL DIMENSIONS ARE IN METRES UNLESS NOTED OTHERWISE.
  - ALL LEVELS ARE IN METRES RELATIVE TO ORDNANCE DATUM NEWLYN UNLESS NOTED OTHERWISE.
  - THIS DRAWING HAS BEEN BASED UPON SURVEY / OS INFORMATION SUPPLIED BY OTHERS, ROYAL HASKONING DHV SHALL NOT BE LIABLE FOR ANY INACCURACY OR DEFICIENCIES ARISING FROM IT.
  - THIS DRAWING TO BE READ IN CONJUNCTION WITH ALL OTHER RELEVANT DRAWINGS.
  - ALL MATERIALS AND WORKMANSHIP WILL BE AS SPECIFIED IN THE SPECIFICATION UNLESS NOTED OTHERWISE.
  - ALL LEVELS, DIMENSIONS AND LOCATIONS ARE TO BE CHECKED BY THE MAIN CONTRACTOR PRIOR TO COMMENCEMENT OF ANY WORK ON SITE.
- KEY**
- CROSS/LONGITUDINAL SECTION
  - EXISTING GROUND PROFILE
  - PROPOSED GROUND PROFILE
  - 1 IN 1 STORM WATER PROFILE
  - 1 IN 30 STORM WATER PROFILE
  - 1 IN 100 +30% CC STORM WATER PROFILE



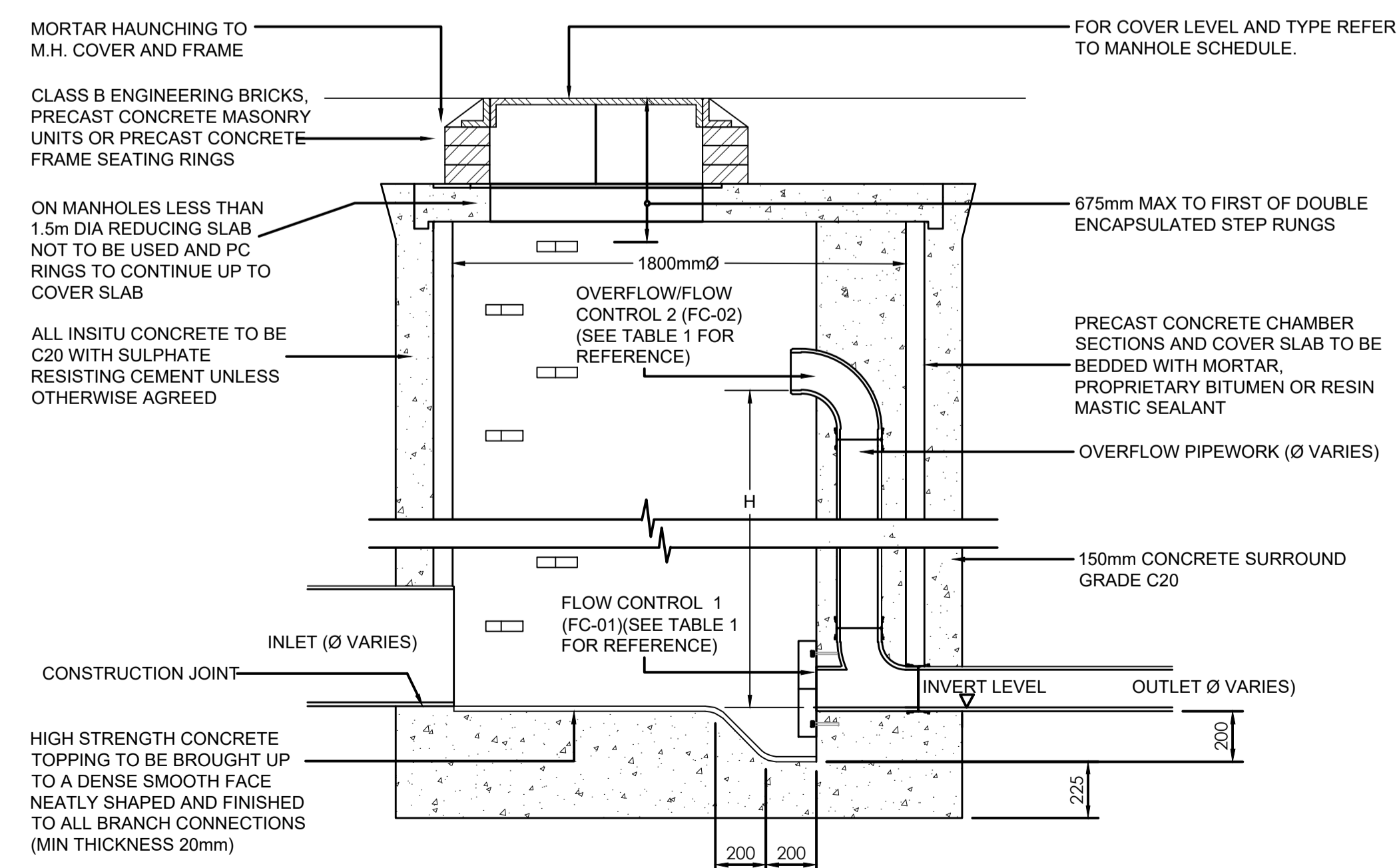
TYPICAL DETENTION BASIN MOUND DETAIL (NTS)

Catchment	Greenfield Conditions			Networks															
	Required Discharge rates (R124)			Outfall - Flow control system						Discharge rates(Q) Water levels on Detention Basin(WL)									
	Q1 in 1	Q1 in 30	Q1 in 100	Outfall number	DS Pipe number	Manhole number	Cover Level	Invert Level	Flow control Ref.	Type	Depth Above Invert(mm)	Q1 in 1		Q1 in 30		Q1 in 100			
Area 4	9.80	25.96	36.04	Outfall 4.1	10.007	S4.57FC	86.400	84.700	FCD4-01	Hydrobrake	0	2.90	85.964	3.10	86.020	9.30	86.141		
										FCD4-02	Ø100mm Pipe	1300							
				Outfall 4.2	4.013	S4.36FC	86.200	84.800	FCD4-03	Hydrobrake	0	4.70	85.057	10.50	85.525	19.70	85.900		
											FCD4-04	Ø100mm Pipe	1600						
				Outfall 4.3	2.006	S4.08FC	82.650	80.840	FCD4-05	Hydrobrake	0	1.80	81.344	1.80	81.653	7.30	81.885		
											FCD4-06	Ø100mm Pipe	900						
								<b>TOTAL</b>				<b>9.40</b>	<b>15.40</b>	<b>36.30</b>					

TABLE 1 - DISCHARGE DETAILS

Detention Basin 4.2			
Depth(m)	Area(m <sup>2</sup> )	Estimated Volume(m <sup>3</sup> ) (A1+A2)2 x H	Cumulative Volume(m <sup>3</sup> )
-0.150	931.6	139.7	139.7
0.000	395.6	0.0	139.7
0.250	546.3	110.4	250.1
0.500	1069.0	202.2	452.2
0.750	1656.4	338.1	790.3
1.000	2310.2	493.2	1283.5
1.250	2954.6	668.1	1941.6
1.500	3595.2	762.5	2724.0
<b>TOTAL</b>		<b>2724.03</b>	<b>2724.0</b>

TABLE 2 - DETENTION BASIN 4.2 VOLUME DETAILS



SECTION THROUGH FLOW CONTROL MANHOLE SCALE 1:20

REV	DATE	DESCRIPTION	BY	CHK	APP
105	25/03/20	UPDATED TO LOCAL AUTHORITY COMMENTS	JBW	PV	DJ
104	23/03/20	AMENDED TO LOCAL AUTHORITY COMMENTS	LZ	PV	DJ
103	24/02/20	UPDATED POND LAYOUT	JBW	PV	DJ
102	11.02.20	UPDATED POND DISCHARGE RATES	JBW	PV	DJ
101	22.03.19	FIRST ISSUE	JBW	PV	DJ

REVISIONS INFORMATION

CLIENT:

PROJECT:

DETENTION BASIN 4.2 DETAILS

**Royal HaskoningDHV**  
Enhancing Society Together

Portland Street, Manchester One, 9th Floor, Manchester, M1 3LF  
Tel +44(0)161 2361018  
Email info.manchester@uk.rdhv.com  
Website www.royalhaskoning.com

DRAWN	CHECKED	APPROVED
JBW	PV	DJ
DATE	SCALE AT A1	PROJECT NUMBER
MAR-19	AS SHOWN	PB8301

DRAWING No.	REVISION
PB8301-RHD-DE-H1-DR-D-0555	105