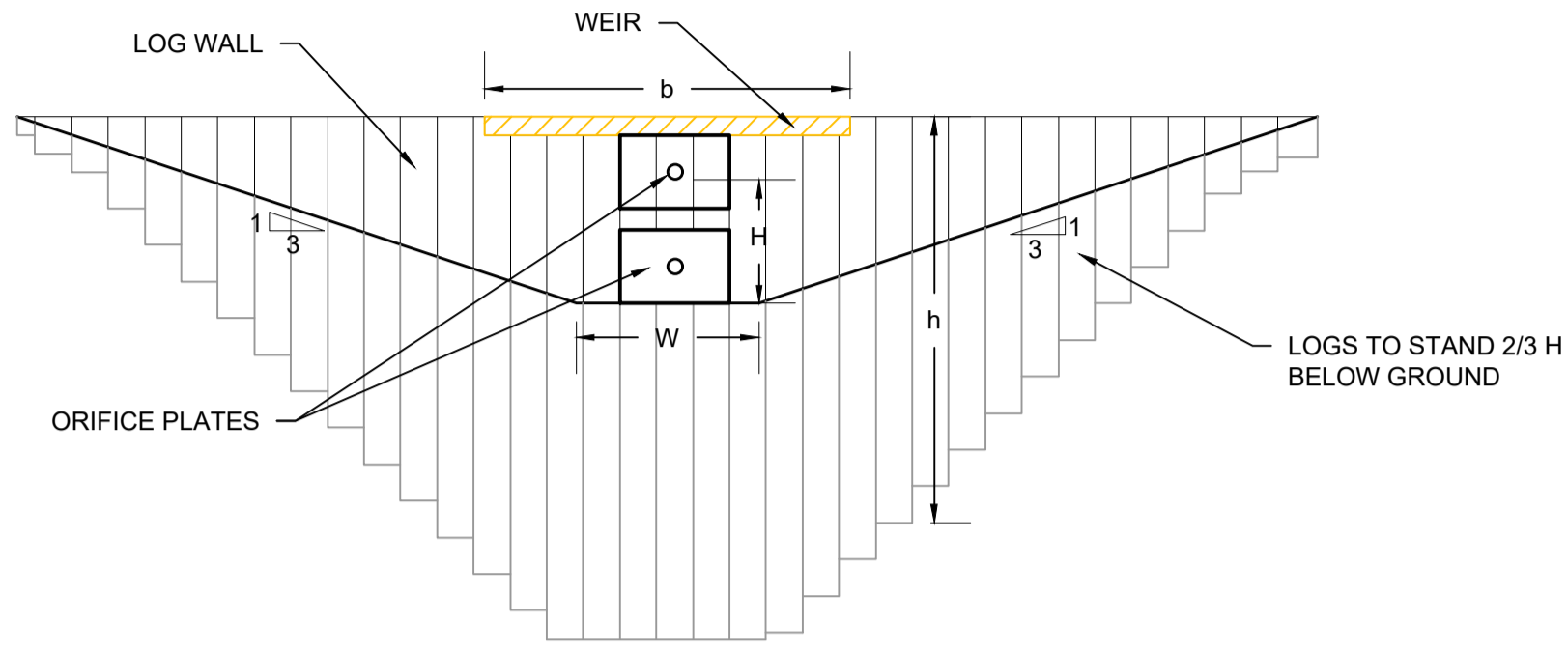
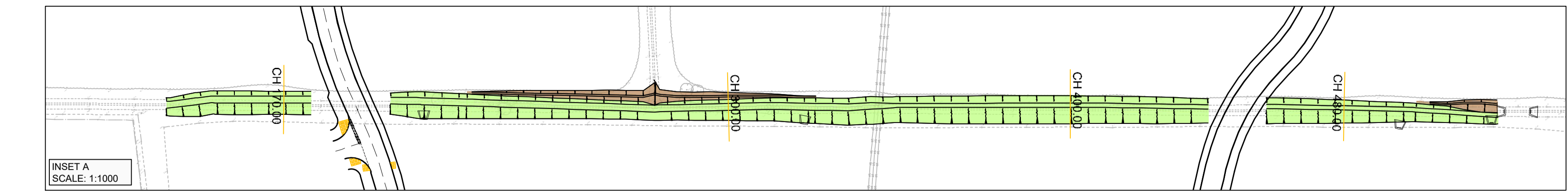
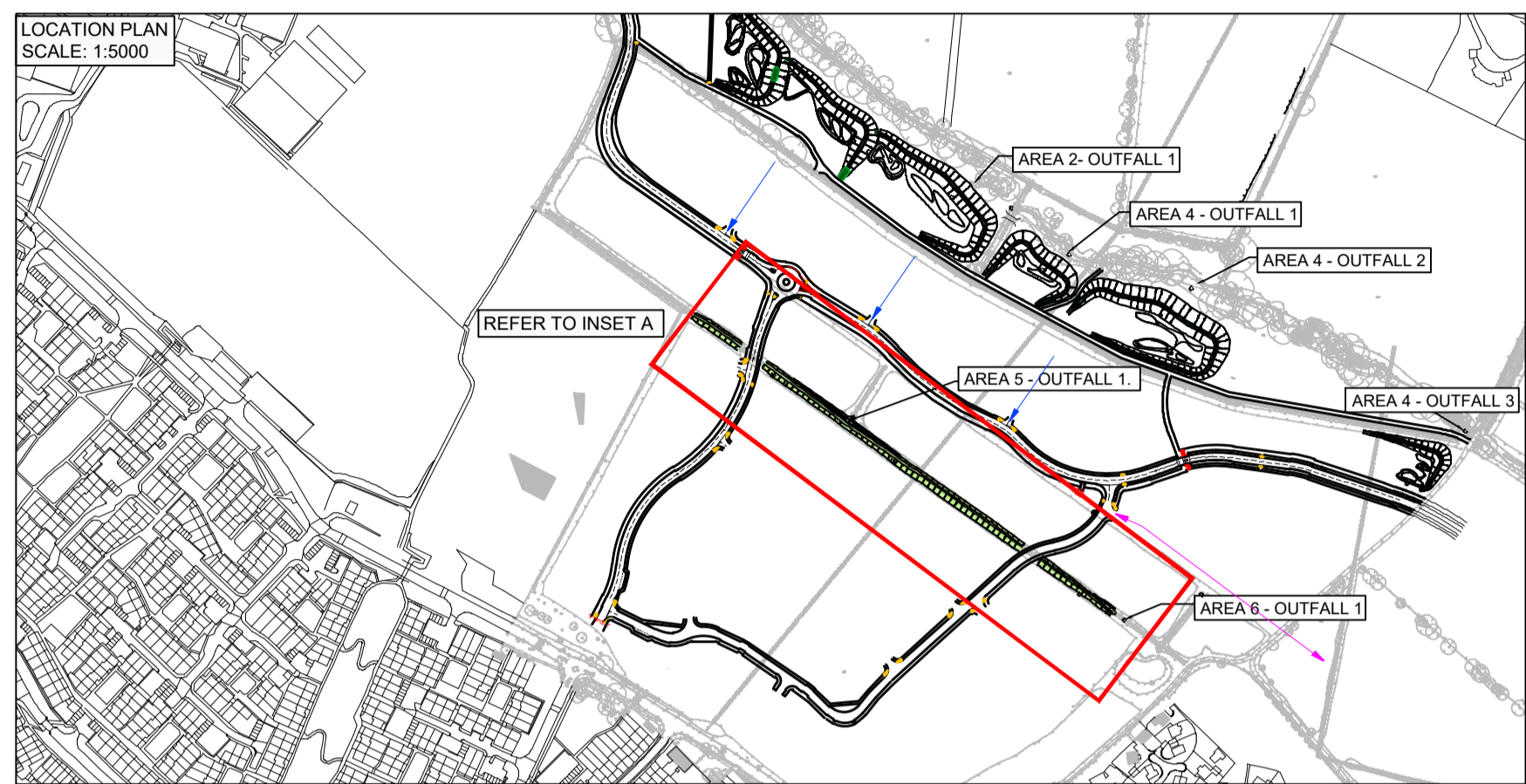


CROSS SECTIONS KEY:
 - PROPOSED GROUND PROFILE
 - EXISTING GROUND PROFILE
 - 1 IN 1 STORM WATER PROFILE
 - 1 IN 30 STORM WATER PROFILE
 - 1 IN 100 +30% CC STORM WATER PROFILE

HORIZONTAL SCALE 1:250
 VERTICAL SCALE 1:50



SECTION THROUGH LOG WALL FLOW CONTROL (AREA 5 - OUTFALL 1 FLOW CONTROL)
 NTS



Swale D3		
Depth (m)	Area (m²)	Cumulative Volume(m³)
0.150	520	76
0.250	696	139
0.500	960	344
0.750	1516	596
1.000	1796	1407
1.250	1969	1811
1.500	2100	1817

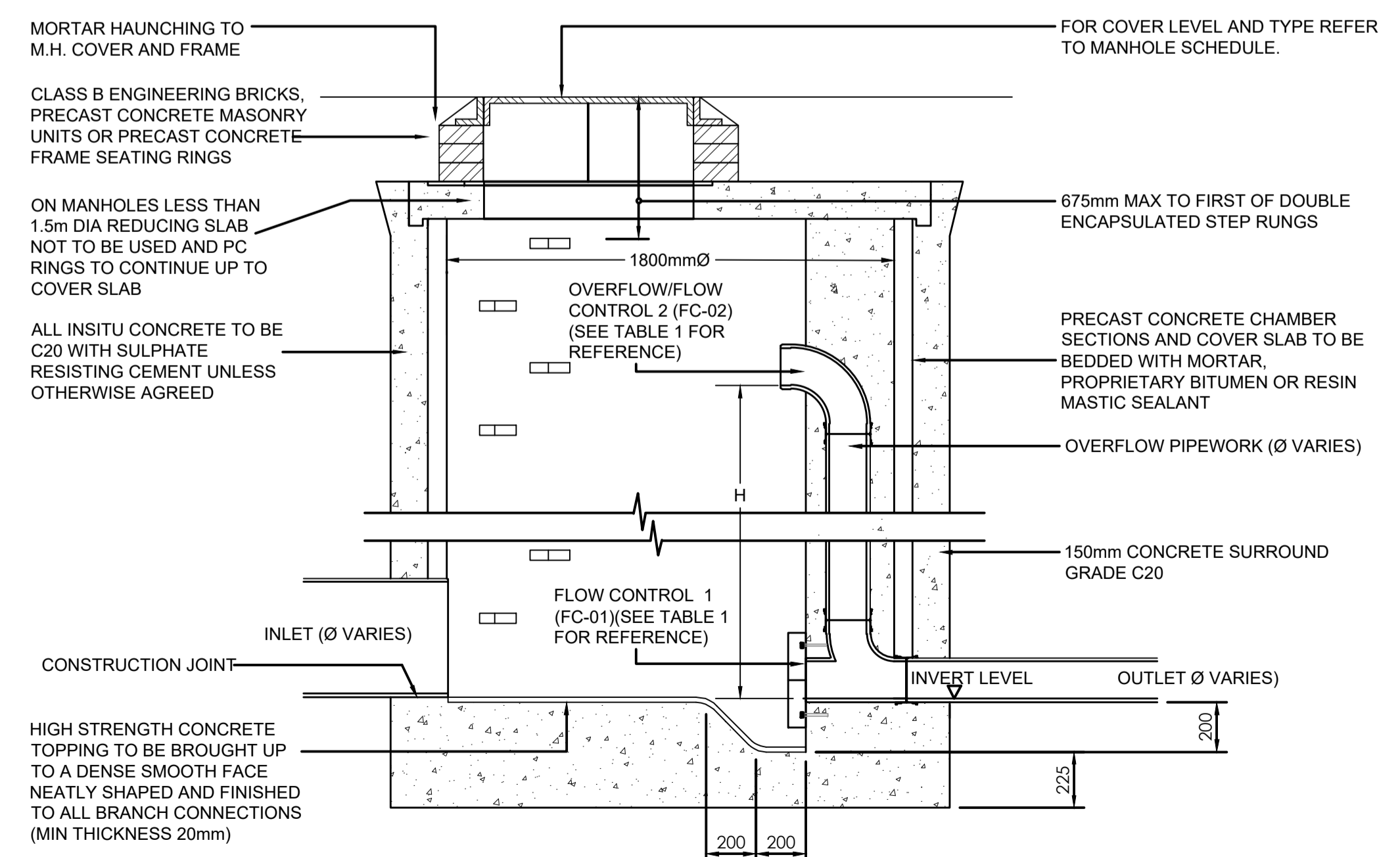
Swale D4		
Depth (m)	Area (m²)	Cumulative Volume(m³)
0.150	124	16
0.250	161	29
0.500	218	76
0.750	285	138
1.000	356	218
1.250	451	309

TABLE 2 - SWALES VOLUME DETAILS

Catchment	Greenfield Conditions			Networks													
	Required Discharge rates (lit/s)			Outfall - Flow control system							Discharge rates(Q)/ Water levels(WL)						
	Q1 in 1	Q1 in 30	Q1 in 100	Outfall number	DS Pipe number	Manhole number	Cover Level	Invert Level	Flow control Ref.	Type	Depth Above Invert (mm)	Q1 in 1		Q1 in 30		Q1 in 100	
Area 5	4.37	11.60	16.10	Area 5 Outfall 1	1.004	S5.30 FC	92.000	90.470	FC05-01	Ø60mm Plate	150	5.30	90.990	10.70	91.422	14.60	91.830
										FC05-02	Ø60mm Plate	700					
									TOTAL								

Catchment	Greenfield Conditions			Networks													
	Required Discharge rates (lit/s)			Outfall - Flow control system							Discharge rates(Q)/ Water levels(WL)						
	Q1 in 1	Q1 in 30	Q1 in 100	Outfall number	DS Pipe number	Manhole number	Cover Level	Invert Level	Flow control Ref.	Type	Depth Above Invert (mm)	Q1 in 1		Q1 in 30		Q1 in 100	
Area 6	1.44	3.62	5.31	Area 6 Outfall 1	1.002	S6.15 FC	91.300	90.070	FC06-01	Hydrobrake	150	1.40	90.489	1.800	90.821	5.10	91.130
										FC06-02	Ø25mm Orifice	800					
									TOTAL								

TABLE 1 - DISCHARGE DETAILS



SECTION THROUGH FLOW CONTROL MANHOLE
 SCALE 1:20

- GENERAL NOTES**
- DO NOT SCALE FROM THIS DRAWING.
 - ALL DIMENSIONS ARE IN METRES UNLESS NOTED OTHERWISE.
 - ALL LEVELS ARE IN METRES RELATIVE TO ORDNANCE DATUM NEWLYN UNLESS NOTED OTHERWISE.
 - THIS DRAWING HAS BEEN BASED UPON SURVEY / OS INFORMATION SUPPLIED BY OTHERS, ROYAL HASKONING DHV SHALL NOT BE LIABLE FOR ANY INACCURACY OR DEFICIENCIES ARISING FROM IT.
 - THIS DRAWING TO BE READ IN CONJUNCTION WITH ALL OTHER RELEVANT DRAWINGS.
 - ALL MATERIALS AND WORKMANSHIP WILL BE AS SPECIFIED IN THE SPECIFICATION UNLESS NOTED OTHERWISE.
 - ALL LEVELS, DIMENSIONS AND LOCATIONS ARE TO BE CHECKED BY THE MAIN CONTRACTOR PRIOR TO COMMENCEMENT OF ANY WORK ON SITE.

REV	DATE	DESCRIPTION	BY	CHK	APP
104	25/03/20	UPDATED TO LOCAL AUTHORITY COMMENTS	JBW	PV	DJ
103	24/02/20	UPDATED POND LAYOUT	JBW	PV	DJ
102	17.02.20	UPDATED POND DISCHARGE RATES	JBW	PV	DJ
101	22.03.19	FIRST ISSUE	JBW	PV	DJ

REVISIONS

DRAWING STATUS

INFORMATION

CLIENT: **REDROW**

PROJECT: GREAT WILSEY PARK

SWALES DETAILS

Royal HaskoningDHV
 Enhancing Society Together

Portland Street, Manchester One, 9th Floor, Manchester, M1 3LF
 Tel +44(0)161 2361018
 Email info.manchester@uk.rdhv.com
 Website www.royalhaskoning.com

DRAWN: JBW	CHECKED: PV	APPROVED: DJ
DATE: MAR-19	SCALE AT A1: AS SHOWN	PROJECT NUMBER: PB8301
DRAWING No. PB8301-RHD-DE-H1-DR-D-0557		REVISION: 104