

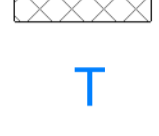





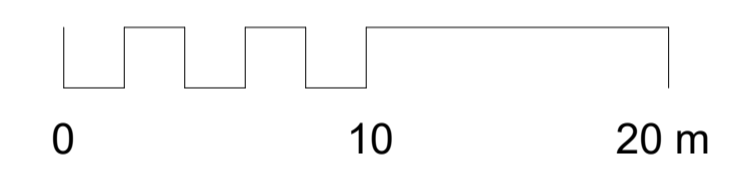


This drawing is the copyright of the architect JBA. All dimensions and conditions to be verified on site by the relevant Contractor prior to proceeding.

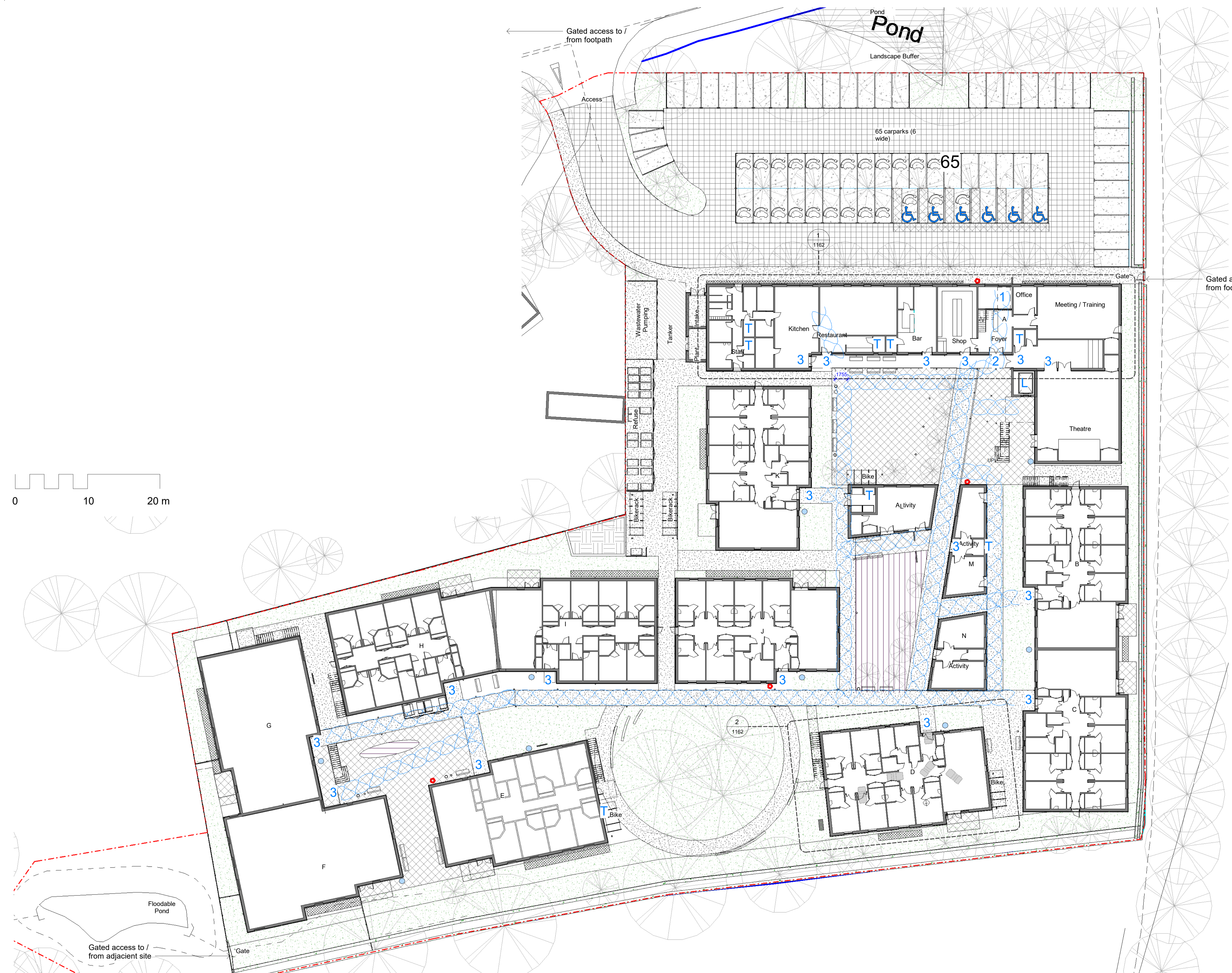
... Standard industry solutions apply unless otherwise stated. All dimensions are in millimeters and are to structural faces or centres unless otherwise stated. not to finishes unless otherwise stated. Survey by others.

This drawing must be read in conjunction with all other relevant drawings and specifications from the Architect and other consultants. If in doubt, ask.

-  Proposed Site Boundary
-  6x wheelchair accessible carpark spaces 3.6m wide w. 1.2m front clearance as M2 diagram 2
-  Unisex wheelchair accessible toilet Toilet 1.5x2.2m as Part M2 Diagram 18
-  Lift carriage 1.8x2.7m, 1.4m door, 4.0x3.5m clear landing as HTM_05-02_2015 Figure 9
-  Main entrance airlock to check residents' leaving the secure premises and to allow occasional bed movement, lobby min. 2.9x1.8m with 1.75m door's effective clear width as HBN_00-04_2013 Figures 22 and 15
-  1.75m door's effective clear width to allow bed movement as HBN_00-04_2013 Figures 22 and 15
-  0.85m door's effective clear width to allow wheelchair access, plus half leaf for occasional (large mobility scooters, deliveries, castor beds etc.)
-  Nominal clear route for bed movement 2.15m, also allowing two wheelchair and ambulant to pass by as HBN_00-04_2013 Figures 7 and 8
- For datum and sloped section of paths see diagram 1015 "Topography and Datum Strategy"



Accessibility - Ground Floor



Rev.	DD/MM/YY	Initials	Description

Jordan+Bateman Architects

Head Office: T +44 (0)20 7363 8866
 The Gothic Building F +44 (0)20 7363 1335
 Chauntry Mills, High Street jba@jandba.com
 Haverhill, Suffolk, CB9 8AZ, UK www.jandba.com

Project:	Little Court
Client:	CARE (Little Court) Ltd
Drawing:	Accessibility - Ground Floor
Date:	29/01/21
Scale:	As indicated @ A1
Drawn By:	LE
Drawing No:	410_00_0G_PL_A_1160
Revision:	
Preliminary [X]	Tender [] Construction []