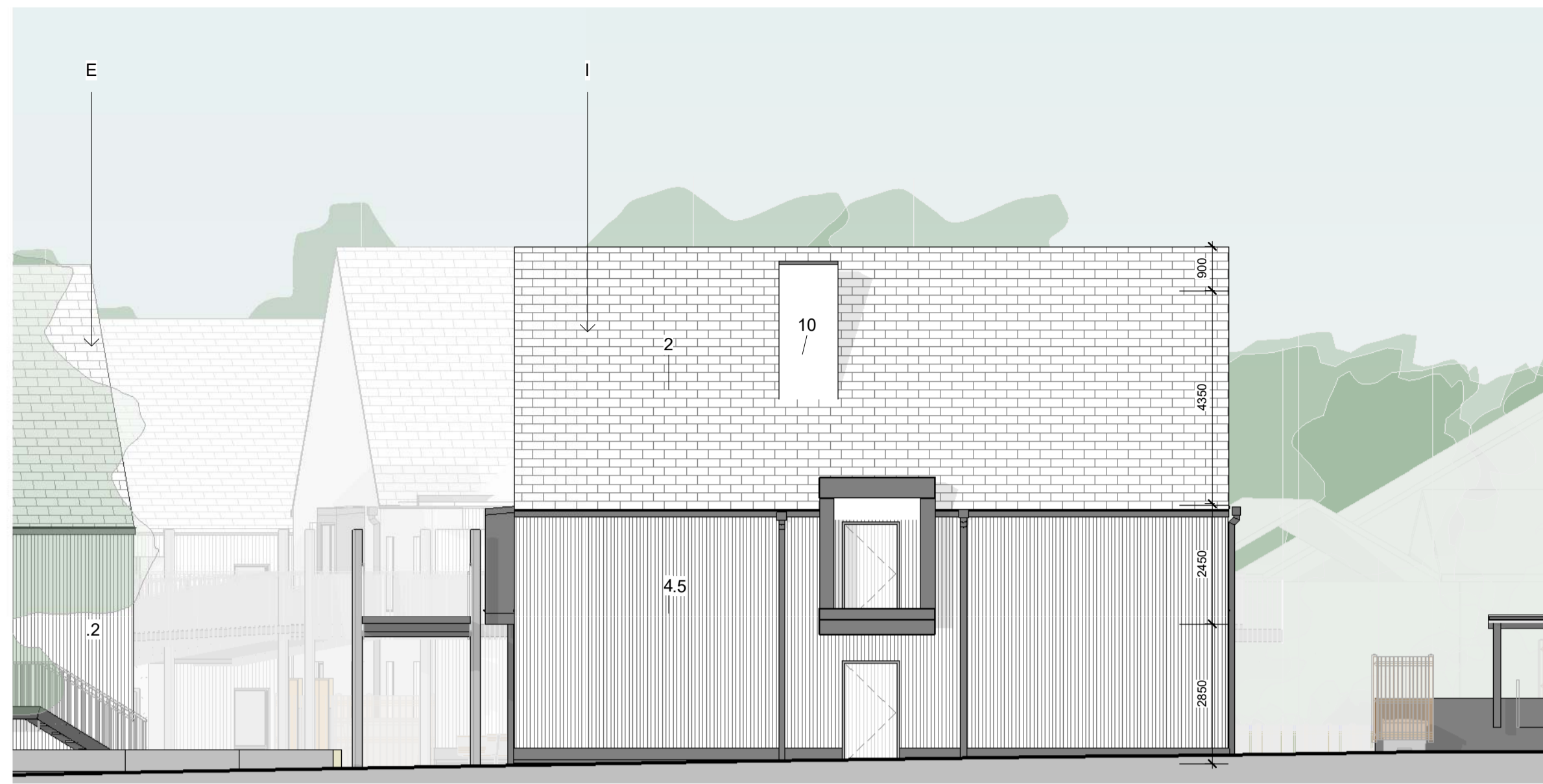
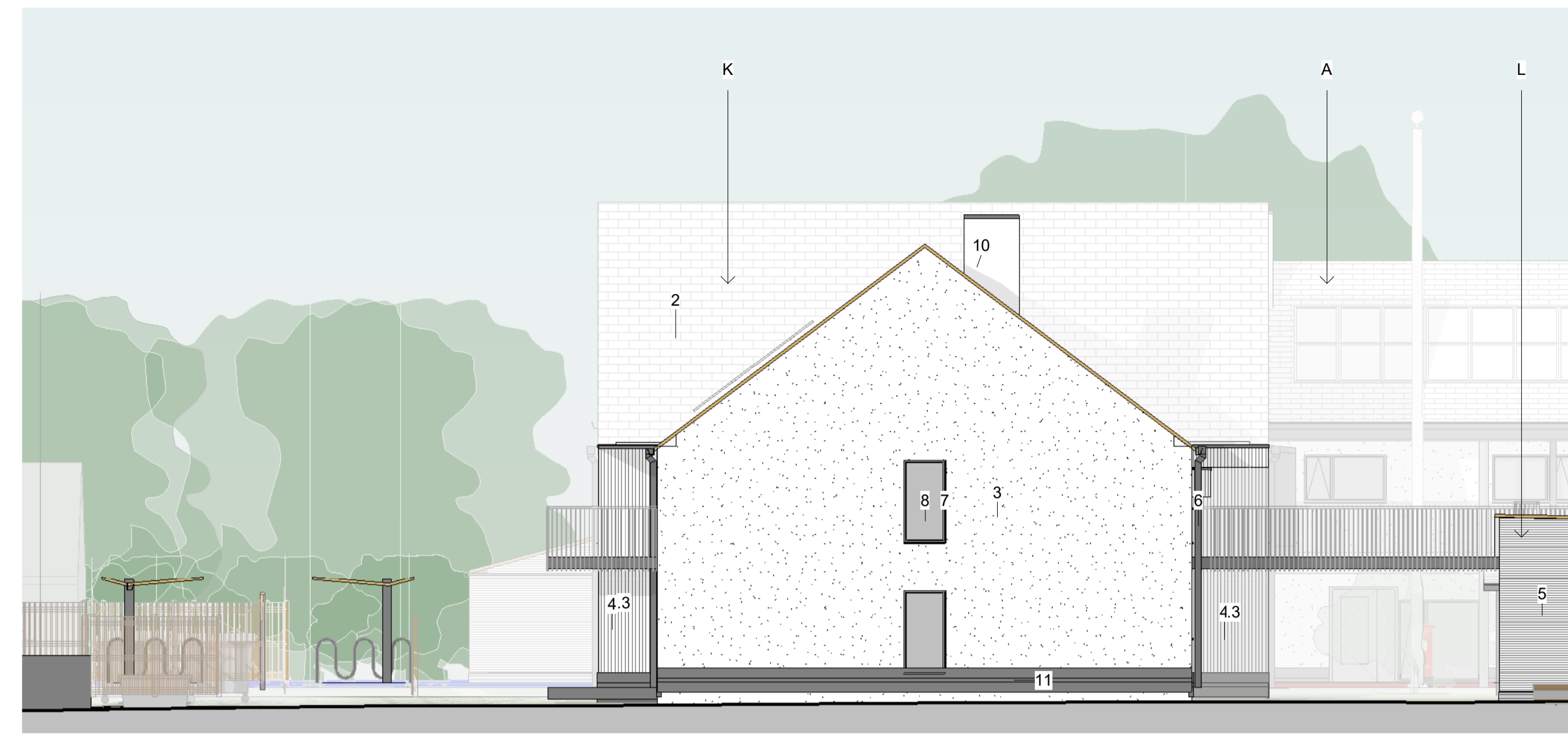


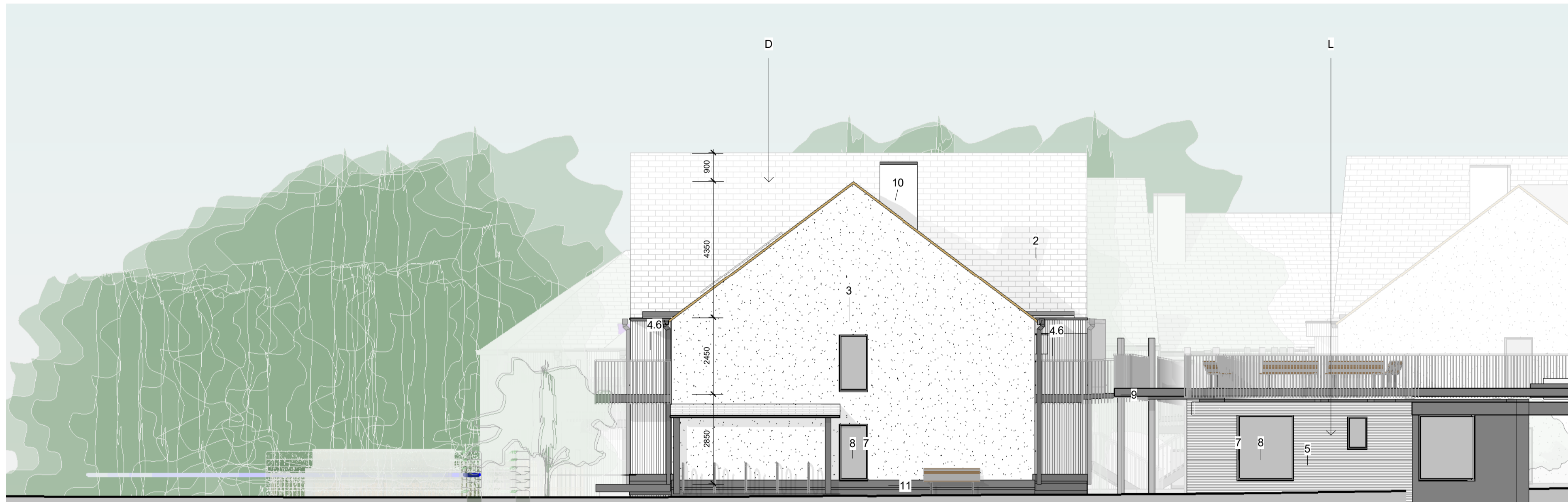
This drawing is the copyright of the architect JBA.
 All dimensions and conditions to be verified on site by the relevant Contractor prior to proceeding.
 ...
 Standard industry solutions apply unless otherwise stated.
 All dimensions are in millimeters and are to structural faces or centres unless otherwise stated.
 not to finishes unless otherwise stated.
 Survey by others.
 This drawing must be read in conjunction with all other relevant drawings and specifications from the Architect and other consultants.
 If in doubt, ask.



1 Elevation Blocks I - East
1:100



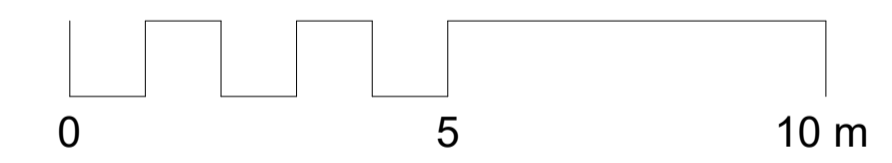
4 Elevation Block K - South
1:100



2 Elevation Block D - East
1:100



3 Elevation Block D - North
1:100



Rev. DD/MM/YY Initials - Description

Material Key

- 1 Plain tile, col. terracotta
- 2 Plain Tile, col. dark grey
- 3 Render, col. white
- 4.1 Vertical timber, col. white
- 4.2 Vertical timber, col. light grey
- 4.3 Vertical timber, col. battleship grey
- 4.4 Vertical timber, col. woodland grey
- 4.5 Vertical timber, col. french grey
- 4.6 Vertical timber, col. forest green
- 4.7 Vertical timber, col. eucalyptus
- 4.8 Vertical timber accent, col. mid veneer
- 5 Horizontal timber, col. dark grey
- 6 Above ground drainage, col. dark grey
- 7 Window Frames, col. dark grey
- 8 Double glazing, col. clear
- 9 Metalwork, col. dark grey
- 10 Metal sheatoin, col. light grey
- 11 Engineering brick footing, dark grey
- 12 Veneered door with clear glazing
- 13 Solar panels
- 14 Fair face pigmented concrete, col. sand

**Jordan+Bateman
Architects**

Head Office: T +44 (0)20 7363 8866
 The Gothic Building F +44 (0)20 7363 1335
 Chauntry Mills, High Street jba@jandba.com
 Haverhill, Suffolk, CB9 8AZ, UK www.jandba.com

Project: Little Court
 Client: CARE (Little Court) Ltd
 Drawing: Elevations Returns Misc
 Date: 29/01/21
 Scale: 1 : 100 @ A1
 Drawn By: LE
 Drawing No: 410_00_EL_PL_A_4114
 Revision
 Preliminary [X] Tender [] Construction []