



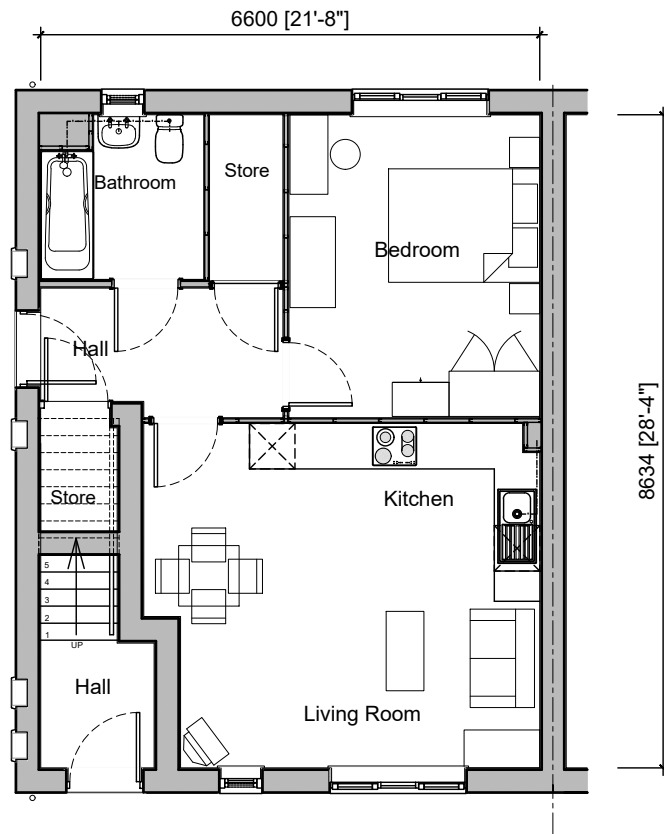
FRONT ELEVATION  
1:100@A3



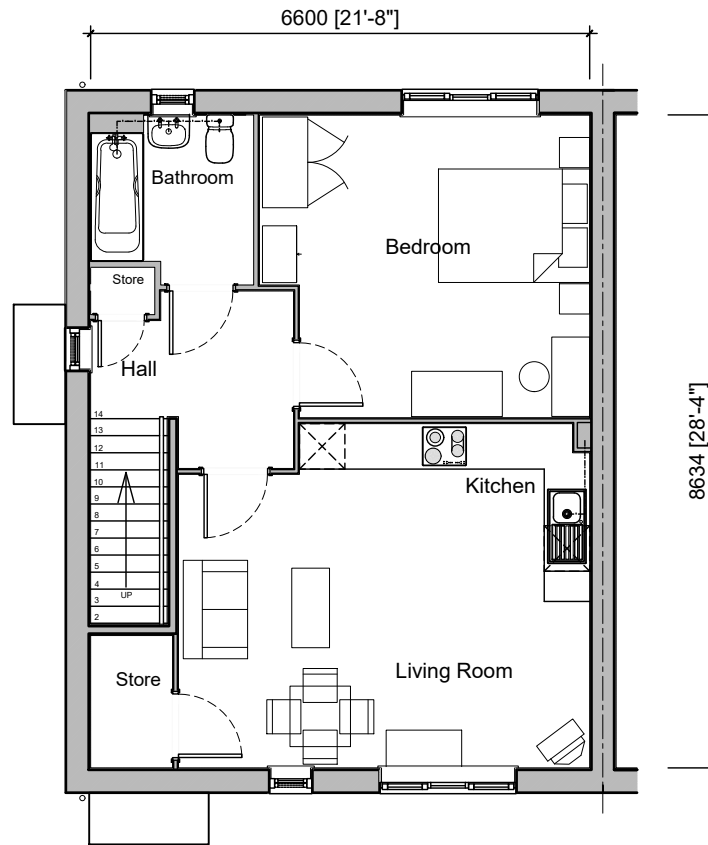
SIDE ELEVATION  
1:100@A3



REAR ELEVATION  
1:100@A3



GROUND FLOOR UNIT  
1:100@A3



FIRST FLOOR UNIT  
1:100@A3

### INTERNAL FLOOR AREAS

GROUND FLOOR APARTMENT  
52.3 sq m, (563 sq ft)

FIRST FLOOR APARTMENT  
57.0 sq m, (613 sq ft) (plus GF lobby 1.6sq m , 17 sq ft)

Drawing Number	SH104.1/3	Checked	PS	Scale @ A3	1:100
Revision	-	Date	08/21	House Type	Gross Internal Area
Drawing Status	PLANNING	Drawn	CC	51.1 / m <sup>2</sup>	550 / sq.ft.
				53.6	577

Drawing Title	SH104.1 PLANNING PLANS & ELEVATIONS
---------------	---

Project	BRICKFIELDS DRIVE HAVERHILL
---------	--------------------------------

© The drawings and the building works reported are the copyright of Balfour Beatty Investments Limited. This drawing (or any part of it) may not be reproduced, stored, copied, or transmitted in any form or by any means, without the prior written permission of Balfour Beatty Investments Limited.  
DO NOT SCALE THIS DRAWING - ALWAYS USE WRITTEN DIMENSIONS - ALL DIMENSIONS TO BE VERIFIED ON SITE

**Balfour Beatty**  
HOMES

130 Euston Road Regent's Place London NW1 3AX • Tel: 020 7121 1700