

KEY
 Application boundary
 Existing trees and vegetation

PLANT SCHEDULE

Trees

Abbr	Species	Supply	Size	Girth	Number
ACCA	Acer campestre	Standard BR	250-300cm 8-10cm	8	8
ACEPS	Acer pseudoplatanus	Standard BR	250-300cm 8-10cm	3	3
BETFE	Betula pendula	Standard BR	250-300cm 8-10cm	4	4
CARBE	Carpinus betulus	Standard BR	250-300cm 8-10cm	2	2
FRAY	Fraxinus oxymus	Standard BR	250-300cm 8-10cm	11	11
GURO	Quercus robur	Standard BR	250-300cm 8-10cm	13	13
SORAU	Sorbus aucuparia	Standard BR	250-300cm 8-10cm	11	11
AMARI	Amygdalocorymbus caribaea 'Robin Hill'	Extra Heavy Standard BR	425-600cm 14-16cm	2	2
LIRTI	Liriodendron tulipifera	Extra Heavy Standard BR	450-625cm 16-18cm	1	1
MALTI	Molus triobata	Extra Heavy Standard BR	450-625cm 16-18cm	4	4
BETUT	Betula utilis jacquemontii	Extra Heavy Standard BR	450-625cm 16-18cm	1	1
CARBE	Carpinus betulus	Extra Heavy Standard BR	450-625cm 18-20cm	1	1
					Total: 61

Specimen Shrubs

Abbr	Species	Pot Size	Height	Habit	Number
PHODA	Phormium 'Dazzler'	25L	100-125cm	Triple Crown	6
PHOJE	Phormium 'Jester'	25L	100-125cm	Triple Crown	4
PHOHEW	Phormium 'Yellow Wave'	25L	100-125cm	Triple Crown	1
PHOFREER	Photinia x 'Fraseri Red Robin'	70-90L	225-250cm	Standard: 12-14cm girth	2
					Total: 13

Single Species Hedgerows

Abbr	Species	Pot Size	Height	Habit	Density	Number
CARBE	Carpinus betulus	150-175cm	Feather 5 brks BR	0.4C/Tr	85	85
ELAEB	Elaeagnus ebbingei	10L	80-100cm	Bushy	0.3C/Tr	199
						Total: 284

Shrubs (on plot)

Abbr	Species	Pot Size	Height	Habit	Density	Number
AUCIJACR	Aucuba japonica 'Crotanifolia'	10L	60-80cm	Bushy	0.8C/Tr	4
BERICAN	Berberis canadensis	10L	30-40cm	Bushy	0.7C/Tr	17
BRASU	Brachyglottis 'Sunshine'	10L	40-60cm	Bushy	0.7C/Tr	8
CEATHR	Ceanothus thyrsiflorus repens	10L	40-60cm	Bushy	0.7C/Tr	33
CHOMP	Chaenactis 'Altes Pearl'	10L	40-60cm	Bushy	0.7C/Tr	20
CHOTES	Chaenactis 'Sundance'	10L	40-60cm	Bushy	0.7C/Tr	120
ELAVANMU	Elaeagnus pungens 'Maculata'	10L	80-100cm	Bushy	0.8C/Tr	4
EUOFOENG	Euonymus fortunei 'Emerald 'n' Gold'	10L	30-40cm	Bushy	0.7C/Tr	43
EUOFOENG	Euonymus fortunei 'Emerald Galaxy'	10L	30-40cm	Bushy	0.7C/Tr	37
HEBMAR	Hebe 'Magique'	10L	40-60cm	Bushy	0.7C/Tr	28
HEBMW	Hebe 'Mrs Windler'	10L	40-60cm	Bushy	0.7C/Tr	29
HEBPQ	Hebe 'Purple Queen'	10L	40-60cm	Bushy	0.7C/Tr	53
HEBARE	Hebe abicans 'Red Edge'	10L	30-40cm	Bushy	0.7C/Tr	20
HEBPS	Hebe pinguifolia 'Sutherland'	10L	30-40cm	Bushy	0.7C/Tr	49
HEUMIPP	Heuchera micrantha 'Palace Purple'	5L	Full Pot	0.7C/Tr	10	
HYPH	Hypericum 'Hidcote'	10L	40-60cm	Bushy	0.7C/Tr	34
LAVANMU	Lavandula angustifolia 'Hidcote'	10L	30-40cm	Bushy	0.7C/Tr	37
LAVANMU	Lavandula angustifolia 'Munstead'	10L	30-40cm	Bushy	0.7C/Tr	28
PHOFREER	Photinia x 'Fraseri Red Robin'	10L	80-100cm	Bushy	0.8C/Tr	5
PRULAOL	Prunus laurocerasus 'Otto Luyken'	10L	60-80cm	Bushy	0.7C/Tr	33
ROSOF	Rosa rugosa officinalis	10L	40-60cm	Bushy	0.7C/Tr	14
SARHODI	Sarcococca humilis	10L	30-40cm	Bushy	0.7C/Tr	3
SKIJARU	Skimmia japonica 'Rubella'	10L	40-60cm	Bushy	0.7C/Tr	30
VIDDA	Viburnum davidii	10L	40-60cm	Bushy	0.7C/Tr	8
						Total: 739

Shrubs (play area)

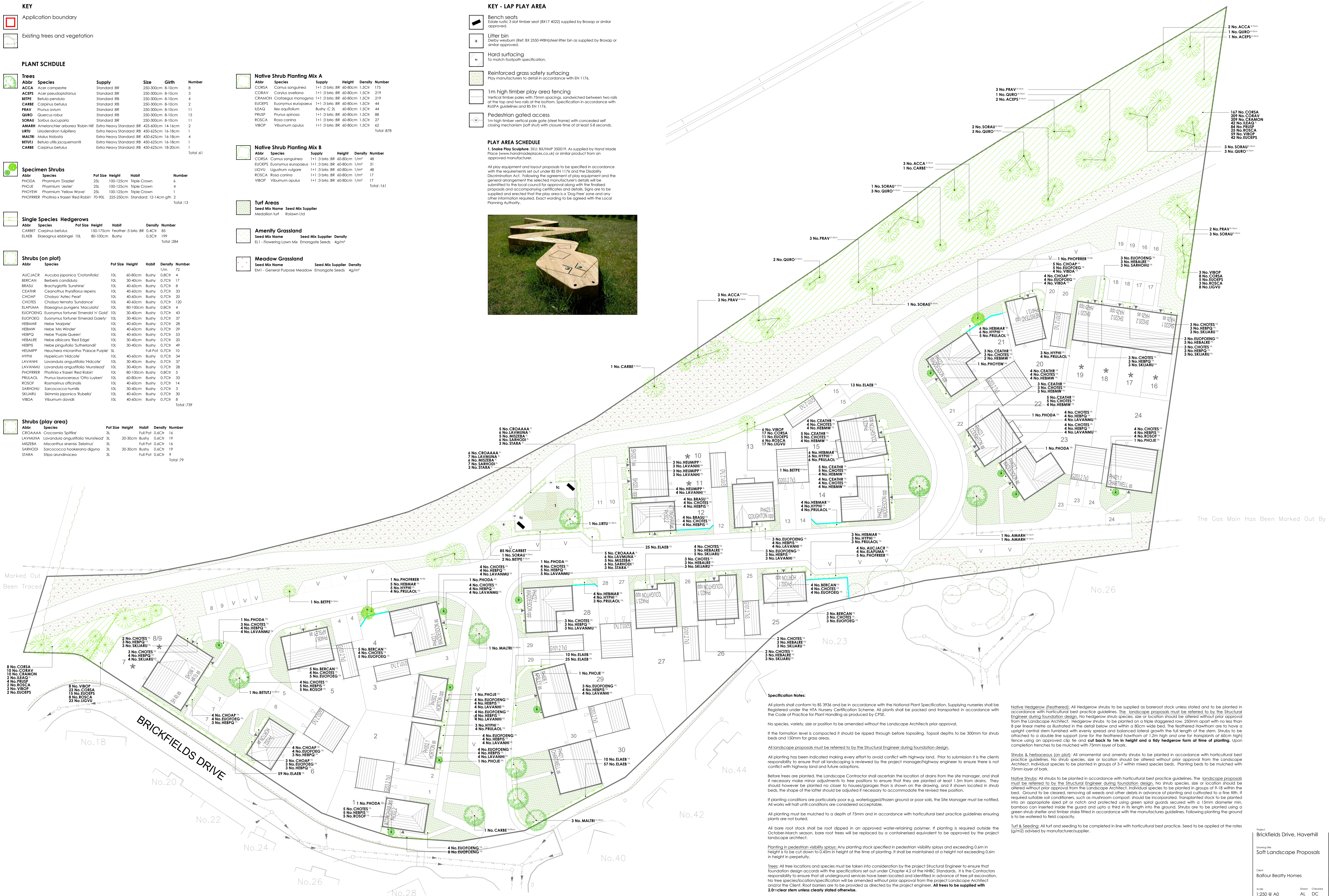
Abbr	Species	Pot Size	Height	Habit	Density	Number
CROAAAA	Crocodylia 'Spiffier'	3L	Full Pot	0.6C/Tr	16	16
LAVANMU	Lavandula angustifolia 'Munstead'	3L	20-30cm	Bushy	0.6C/Tr	19
MISEBA	Miscanthus sinensis 'Zebrinus'	3L	Full Pot	0.6C/Tr	16	16
SARHODI	Sarcococca hookeriana aligata	3L	20-30cm	Bushy	0.6C/Tr	19
STARA	Stipa arundinacea	3L	Full Pot	0.6C/Tr	9	9
						Total: 79

KEY - LAP PLAY AREA

- Bench seats: Eddie rustic 3 slot timber seat (BX17 4022) supplied by Broxap or similar approved.
- Litter bin: Derby weyburn (Ref: BX 2550-WBN) steel litter bin as supplied by Broxap or similar approved.
- Hard surfacing: To match footpath specification.
- Reinforced grass safety surfacing: Play manufacturers to detail in accordance with EN 1176.
- 1m high timber play area fencing: Vertical timber poles with 75mm spacings, sandwiched between two rails at the top and two rails at the bottom. Specification in accordance with RoSPA guidelines and BS EN 1176.
- Pedestrian gated access: 1m high vertical pole gate (steel frame) with concealed self-closing mechanism (soft shut) with closure time of at least 5-8 seconds.

PLAY AREA SCHEDULE

- Snake Play Sculpture: SKU: BX/HMP 350019. As supplied by Hand Made Place (www.handmadeplaces.co.uk) or similar product from an approved manufacturer.
- All play equipment and layout proposals to be specified in accordance with the requirements set out under BS EN 1176 and the Disability Discrimination Act, following the agreement of play equipment and the general arrangement the selected manufacturer's details will be submitted to the local council for approval along with the finalised proposals and accompanying certificates and details. Sign off to be supplied and erected that the play area is a 'Dog Free' zone and any other information required. Exact wording to be agreed with the Local Planning Authority.



Specification Notes:

- All plants shall conform to BS 3936 and be in accordance with the National Plant Specification. Supplying nurseries shall be Registered under the NTA Nursery Certification Scheme. All plants shall be packed and transported in accordance with the Code of Practice for Plant Handling as produced by CPSE.
- No species, variety, size or position to be amended without the Landscape Architect's prior approval.
- If the formation level is compacted it should be ripped through before topsoiling. Topsoil depths to be 300mm for shrub beds and 150mm for grass areas.
- All landscape proposals must be referred to by the Structural Engineer during foundation design.
- All planting has been indicated making every effort to avoid conflict with highway land. Prior to submission it is the clients responsibility to ensure that all landscaping is reviewed by the project manager/highway engineer to ensure there is no conflict with highway land and future adaptations.
- Before trees are planted, the Landscape Contractor shall ascertain the location of drains from the site manager, and shall if necessary make minor adjustments to tree positions to ensure that they are planted at least 1.5m from drains. They should however be planted no closer to houses/garages than is shown on the drawing, and if shown located in shrub beds, the shape of the latter should be adjusted if necessary to accommodate the revised tree position.
- If planting conditions are particularly poor e.g. waterlogged/frozen ground or poor soils, the Site Manager must be notified. All works will halt until conditions are considered acceptable.
- All planting must be mulched to a depth of 75mm and in accordance with horticultural best practice guidelines ensuring plants are not buried.
- All bare root stock shall be root dipped in an approved water-retaining polymer. If planting is required outside the October-March season, bare root trees will be replaced by a containerised equivalent to be approved by the project landscape architect.
- Planting in pedestrian visibility splays: Any planting stock specified in pedestrian visibility splays and exceeding 0.6m in height is to be cut down to 0.45m in height at the time of planting. It shall be maintained at a height not exceeding 0.6m in height in perpetuity.
- Trees: All tree locations and species must be taken into consideration by the project Structural Engineer to ensure that foundation design accords with the specifications set out under Chapter 4.2 of the NHBC Standards. It is the Contractors responsibility to ensure that all underground services have been located and identified in advance of tree pit excavation. No tree species/location/specification will be amended without prior approval from the project Landscape Architect and/or the Client. Root barriers are to be provided as directed by the project engineer. All trees to be supplied with 2.0m clear stem unless clearly stated otherwise.
- Specimen Shrubs: All specimen shrubs to be planted in accordance with horticultural best practice guidelines. No feature shrub or climber species, size or location should be altered without prior approval from the Landscape Architect. Planting beds to be mulched with 75mm layer of bark.
- Hedgerows: All ornamental hedgerow shrubs to be planted in accordance with horticultural best practice guidelines. No hedgerow shrub species, size or location should be altered without prior approval from the Landscape Architect. Planting beds to be mulched with 75mm layer of bark.