

REFLECTIVE SOUND SCREENS

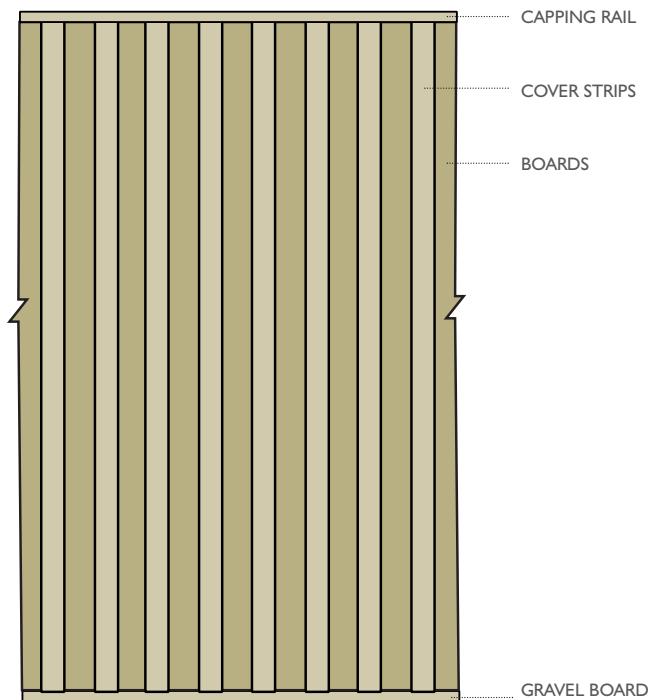
HEIGHTS: 4050 - 4250mm

AUGUST 2014

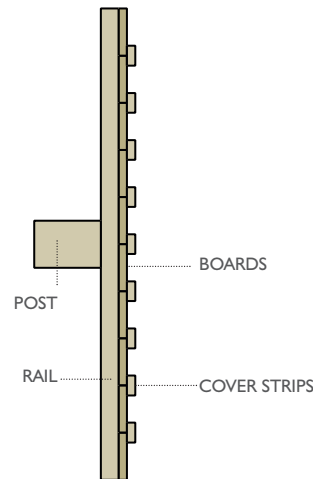
PLEASE NOTE:

1. STRUCTURAL CALCULATIONS MAY BE REQUIRED BY QUALIFIED PERSONS, NO RESPONSIBILITY CAN BE ACCEPTED BY USING THIS DESIGN WITHOUT PROFESSIONAL ADVICE.
2. DESIGN IN ACCORDANCE WITH SPECIFICATION FOR HIGHWAY WORKS CLAUSE 2504. TREATMENT TO SECTOR SCHEME 4.
3. REFLECTIVE SOUND SCREEN FITTED TO TIMBER POSTS (FOR ILLUSTRATION PURPOSES ONLY). STEEL POSTS CAN BE AN ALTERNATIVE.
4. HEIGHT OF SOUND SCREEN VARIABLE TO SUIT SPECIFIC LOCATIONS. POST CENTRES AT 3.0M UNLESS OTHERWISE SPECIFIED.
5. CONFORMS AND TESTED TO BS EN 1793. ALSO TESTED AND COMPLIES TO BS EN 1794-1 AND BS EN 1794-2.
6. COMPLIES WITH HIGHWAYS SECTOR SCHEME 2C FOR THE PREFABRICATION OF ENVIRONMENTAL BARRIERS.
7. AVERAGE DENSITY 26.4 KG/M² (EXCLUDING POSTS).

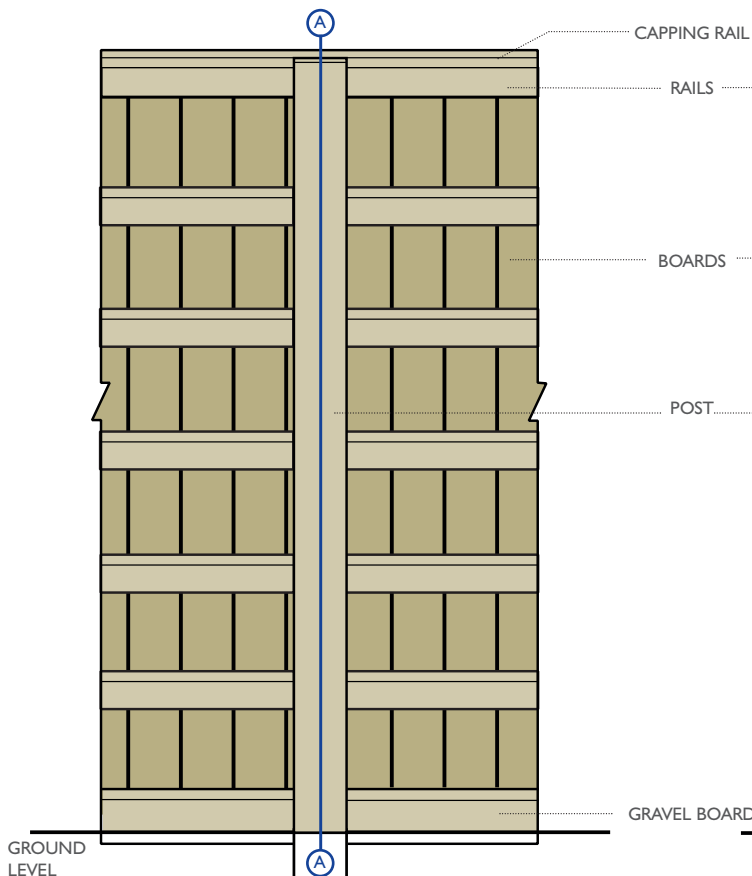
FRONT VIEW



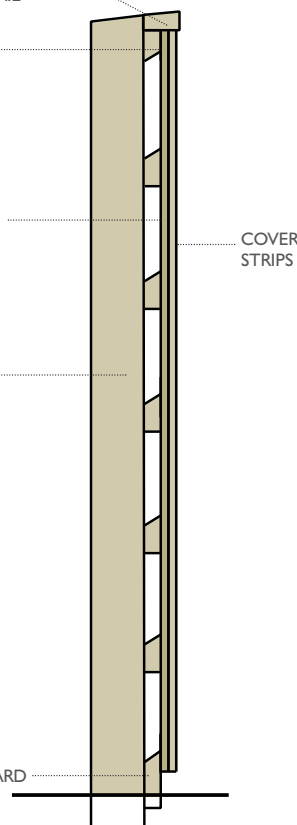
PLAN VIEW
 (Capping omitted)



REAR VIEW



SECTION A-A



HALES, MARKET DRAYTON
 SHROPSHIRE, TF9 2PP
 TEL: **01630 653359**
 FAX: **01630 658859**
www.halesawmills.co.uk

