



External Cladding Materials

New Business Units Development

Iceni Way, Haverhill, Suffolk CB9 7FD

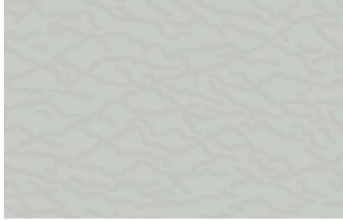
FOR

TREBOR DEVELOPMENTS

AJA Architects llp
1170 Elliott Court
Herald Avenue
Coventry Business Park
Coventry
CV5 6UB

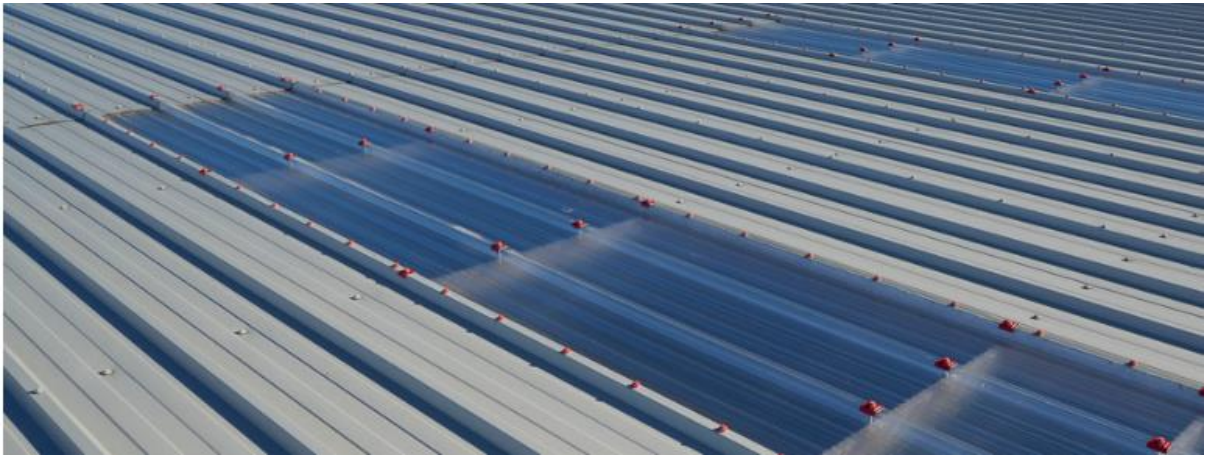
Roof Cladding

Kingspan KS1000 RW Composite roof panel system. Trapezoidal profiled steel outer sheet with XL Forte coating. Colour Goosewing Grey RAL 7038.



Goosewing Grey
RAL 080 70 05 BS 10A05

Including plastisol coated steel flashings to Ridge, Aprons, Abutments, Verge and Eaves, complete with all necessary profiled fillers, fixings and sealants.



Rooflights

Kingspan Day-Lite trapezoidal inline roof lights 15% of roof area.

WALL CLADDINGS

At high level above feature band laid horizontally:

Euroclad Elite 55 - Built-up wall cladding system trapezoidal profiled steel with HPS 200 Ultra finish colour Albatross RAL 240 80 05



Albatross (RAL 240 80 05)

At low level below feature band laid vertically:

Euroclad Elite 51 - Built-up wall cladding system trapezoidal profiled steel with HPS 200 Ultra finish colours Merlin Grey RAL 180 40 05 & Albatross RAL 240 80 05



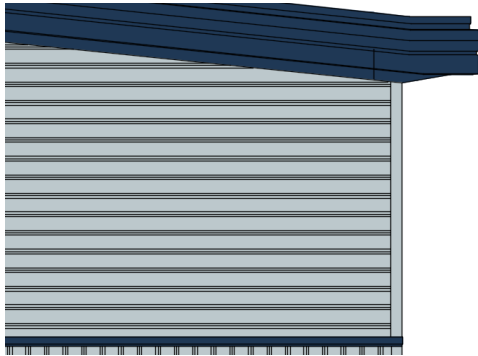
Merlin Grey (RAL 180 40 05)



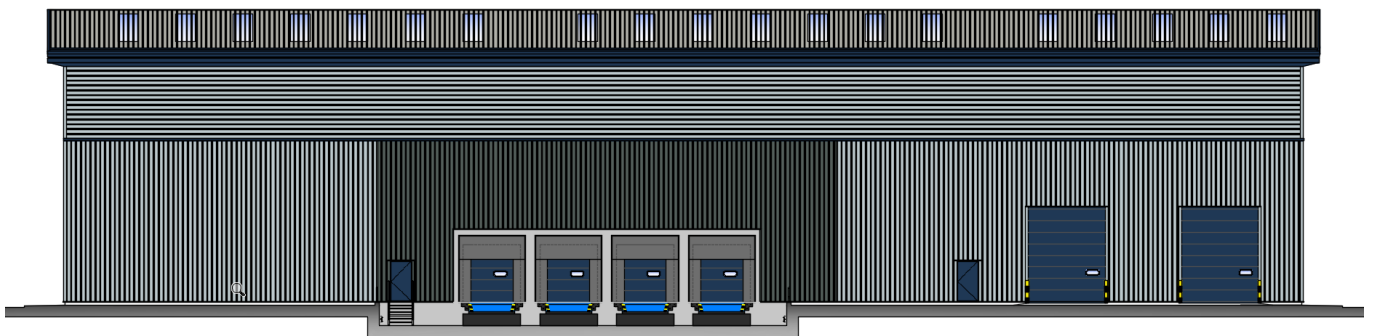
Albatross (RAL 240 80 05)

Roof Fascias, Feature Bands, Window Frames and External Doors

Pressed metal fascia to eaves, verge, soffit and cladding feature band plastisol coated profiled metal Sargasso RAL 5003.



Sargasso (RAL 5003)



To Office Areas Kingspan KS 900 & 600 Module Micro Rib composite panels laid horizontally with XL Forte finish colour Albatross RAL 240 80 05



Albatross (RAL 240 80 05)

This concludes the range of materials used to make up the external appearance of the proposed business units.