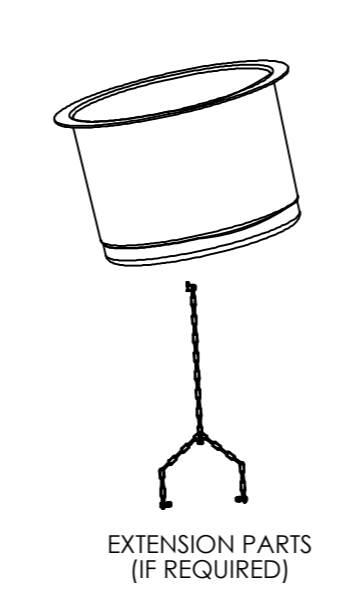
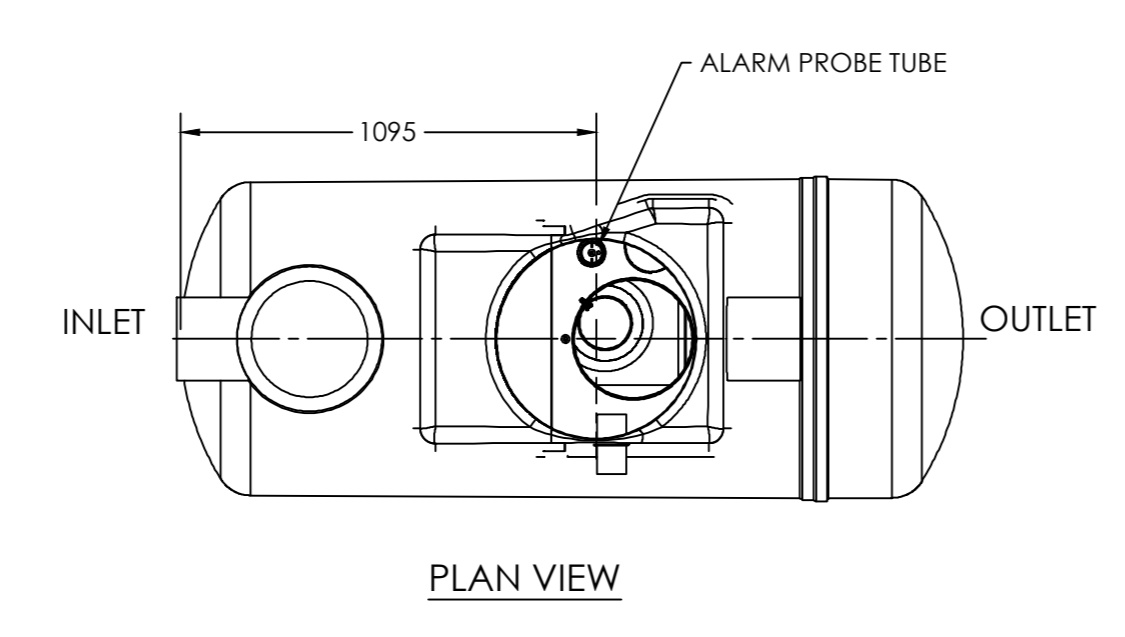
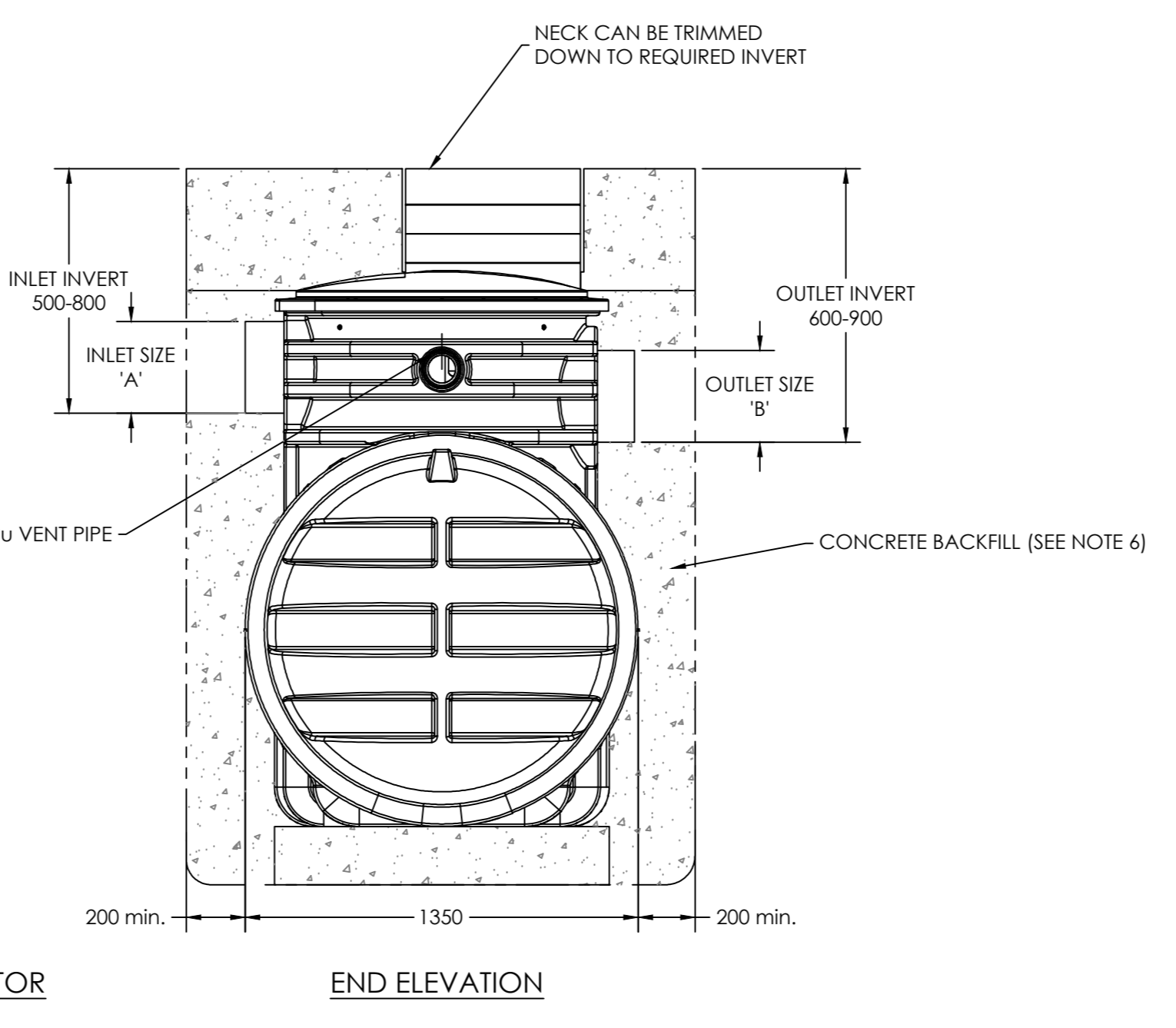
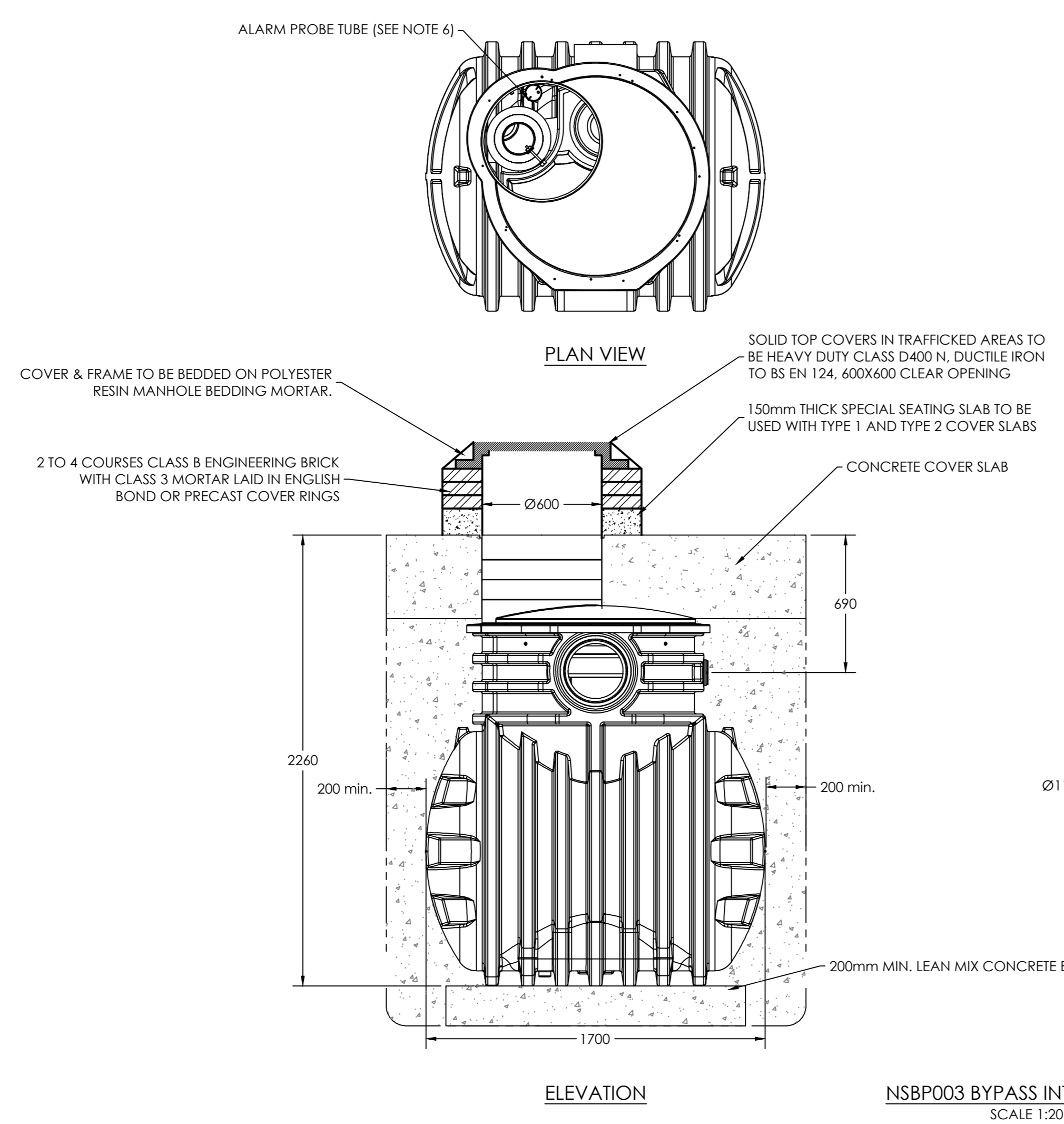


- NOTES:**
- THIS DRAWING IS TO BE READ IN CONJUNCTION WITH ALL OTHER CONSULTANTS DRAWINGS AS APPROPRIATE.
 - THIS DRAWING IS BASED ON DETAILS PROVIDED BY KINGSPAN KLARGESTER.
 - ALL WORKS TO BE IN ACCORDANCE WITH SPECIFICATION FOR HIGHWAY WORKS 1998.
 - THE CONTRACTOR SHALL BE RESPONSIBLE FOR VERIFYING THE LOCATIONS OF ANY EXISTING STATUTORY UTILITIES, ALONG WITH ANY ADOPTABLE AND PRIVATE DRAINAGE THAT MAY BE AFFECTED BY THE PROPOSED WORKS. IDENTIFICATION SHOULD BE CARRIED OUT BY MEANS OF EITHER A CAT SCAN OR HAND DUG TRIAL HOLES. ANY DAMAGE TO EXISTING PLANT OR EQUIPMENT SHALL BE REPAIRED AT THE CONTRACTORS EXPENSE.
 - SITE CLEARANCE, EXISTING TREES, BUSHES AND SHRUBS SHALL ONLY BE REMOVED, INCLUDING GRUBBING UP OF ALL ROOTS, WITH THE PRIOR AGREEMENT OF THE ENGINEER. TRIMMING AND LOPPING OF EXISTING TREES SHALL ONLY BE CARRIED OUT BY AN EXPERIENCED TREE SURGEON AND APPROVED BY THE ENGINEER.
 - PRIOR TO COMMENCEMENT OF WORKS PLEASE REFER TO THE PRE TENDER & CONSTRUCTION PHASE HEALTH AND SAFETY PLANS FOR FURTHER INFORMATION.

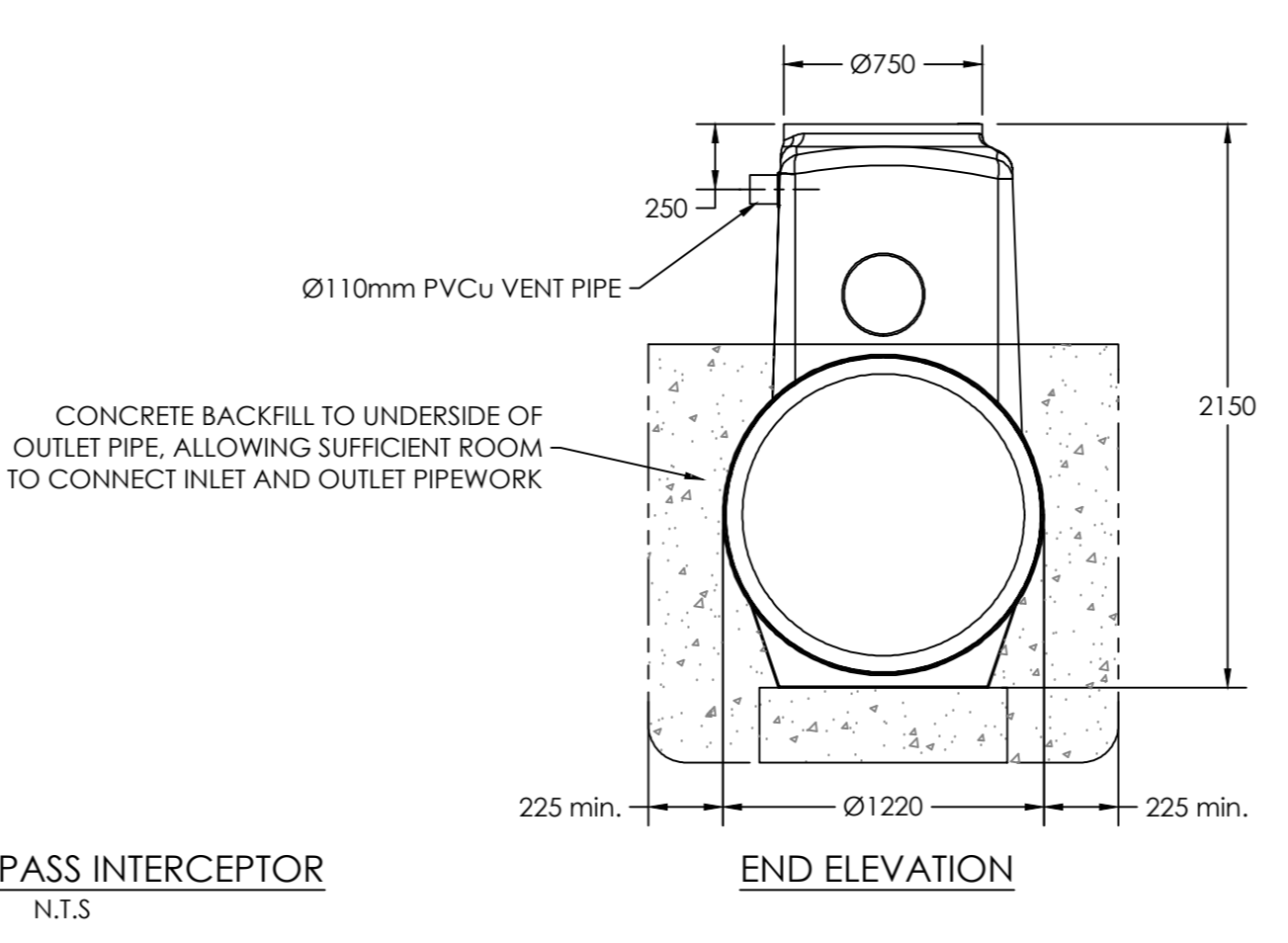
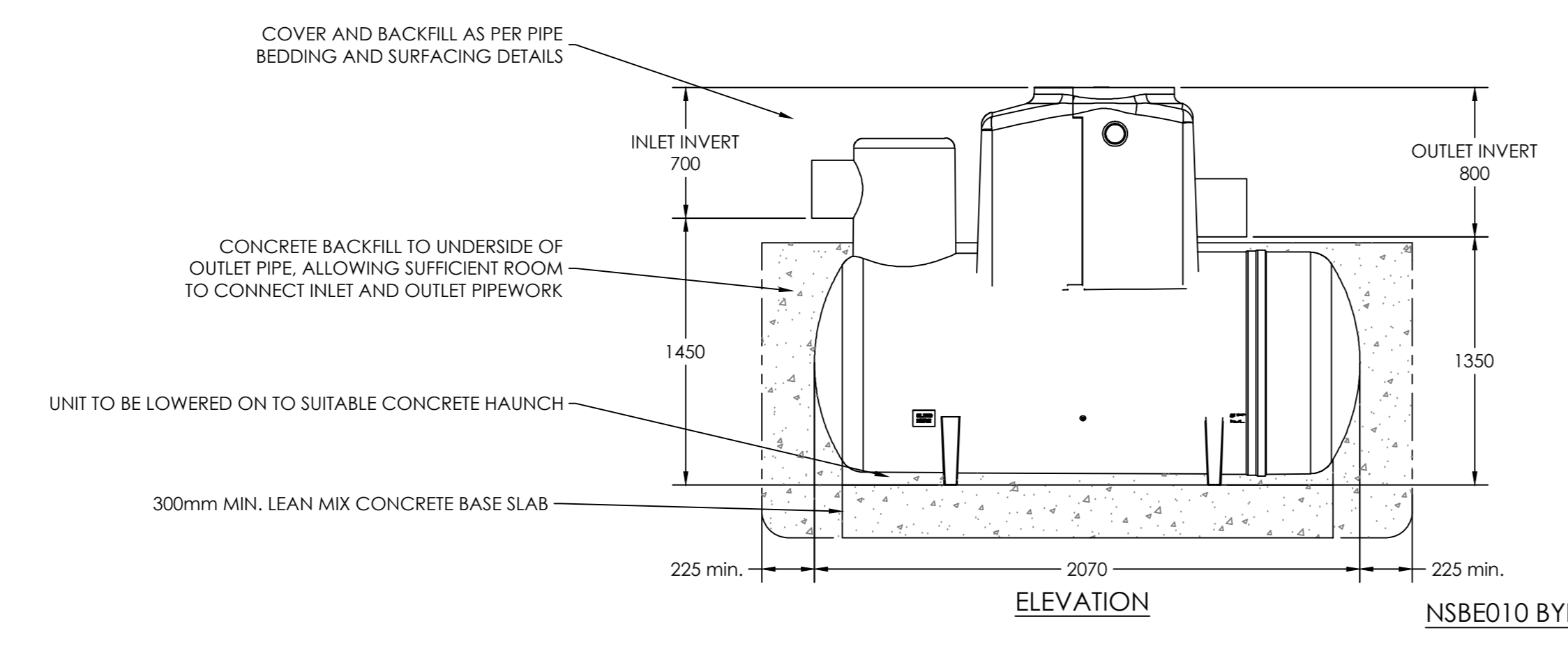
- MANUFACTURER'S NOTES:**
- INLET/OUTLET PIPES ARE PLAIN PIPE Ø315mm PVCU. THE STANDARD EN 858 STATES MINIMUM CONNECTION SIZES, UNITS ORDERED WITH DIFFERENT SIZED CONNECTIONS ARE NOT FULLY COMPLIANT WITH THE STANDARD.
 - EXTENSION NECKS FOR DEEPER INVERTS CAN BE PROVIDED. THESE CAN BE CUT IN 200 MM SECTIONS, MAX 2.0M INVERT RECOMMENDED.
 - ALL UNITS REQUIRE APPROPRIATE COVER AND FRAME TO SUIT APPLIED LOADINGS.
 - THIS DRAWING SHOULD BE USED FOR DIMENSIONAL INFORMATION ONLY. IT IS ESSENTIAL THAT THIS DRAWING IS READ IN CONJUNCTION WITH THE INSTALLATION GUIDELINES SUPPLIED WITH THE UNIT. COPIES ARE AVAILABLE FROM OUR SALES DEPT.
 - A Ø76mm TUBE (INTERNAL) IS SUPPLIED TO HOUSE AN OIL ALARM PROBE.
 - PLEASE REFER TO INSTALLATION MANUAL FOR DETAILS OF CORRECT BACKFILLING.
 - ALL UNITS SUPPLIED ARE CLASS 1 AND INCLUDE A COALESCEUR.
 - EXTENSION PARTS FOR DEEPER INVERTS CAN BE PROVIDED FOR ON SITE ASSEMBLY.
 - THIS DRAWING SHOULD BE USED FOR DIMENSIONAL INFORMATION ONLY.

UNIT REF NO	NOMINAL FLOW	APPROX EMPTY WEIGHT (KGS)	FALL ACROSS UNIT	INLET SIZE 'A'	OUTLET SIZE 'B'
NSBP003	3 L/s	180	100	Ø160 mm	Ø160 mm
NSBE010	10 L/s	160	100	Ø315 mm	Ø315 mm
NSBE020	20 L/s	220	100	Ø375mm	Ø375mm

** INLET/OUTLET SIZE A MUST EQUAL B**



GENERAL CONCRETE SPECIFICATION IN ACCORDANCE WITH BS EN 206-1 (BS 8600-1)	
TYPE OF MIX	(DC) DESIGN
PERMITTED TYPE OF CEMENT	BS 12 (OPC); BS 12 (SRPC); BS 4557 (SRPC)
PERMITTED TYPE OF AGGREGATE (GRADE & Type)	BS 882
NOMINAL MAXIMUM SIZE OF AGGREGATE	30 mm
GRADES:	C25/30 REINFORCED & ABOVE GROUND WITH HOLDING DOWN BOLTS C25/30 REINFORCED (E.G. FOR HIGH WATER TABLE) C16/20 UNREINFORCED (NORMAL CONDITIONS)
MINIMUM CEMENT CONTENT	270 - 280 kg/m ³ 220 - 230 kg/m ³
SUMP CLASS	S1 (25mm)
RATE OF SAMPLING	READY MIX CONCRETE SHOULD BE SUPPLIED COMPLETE WITH APPROPRIATE DELIVERY TICKET IN ACCORDANCE WITH BS EN 12267-1
NOTE: STANDARD MIXES SHOULD NOT BE USED WHERE SULPHATES OR OTHER AGGRESSIVE CHEMICALS EXIST IN GROUNDWATER.	



Create Consulting Engineers accept no responsibility for any unauthorised amendments to this drawing. Only figured dimensions are to be worked to. COPYRIGHT © RESERVED

REV	DATE	AMENDMENT DETAILS	DRAWN	APPROVED

PROJECT MCDONALD'S HAVERHILL	DATE 03.08.22	DRAWING STATUS DESIGNED - SW DRAWN - SW	
DRAWING TITLE BYPASS INTERCEPTOR STANDARD DETAILS	SCALE AS SHOWN	CHECKED BWA	
CLIENT MCDONALD'S RESTAURANT LTD	DRAWING NO. 02/005	REVISION	2590

www.createconsultingengineers.co.uk