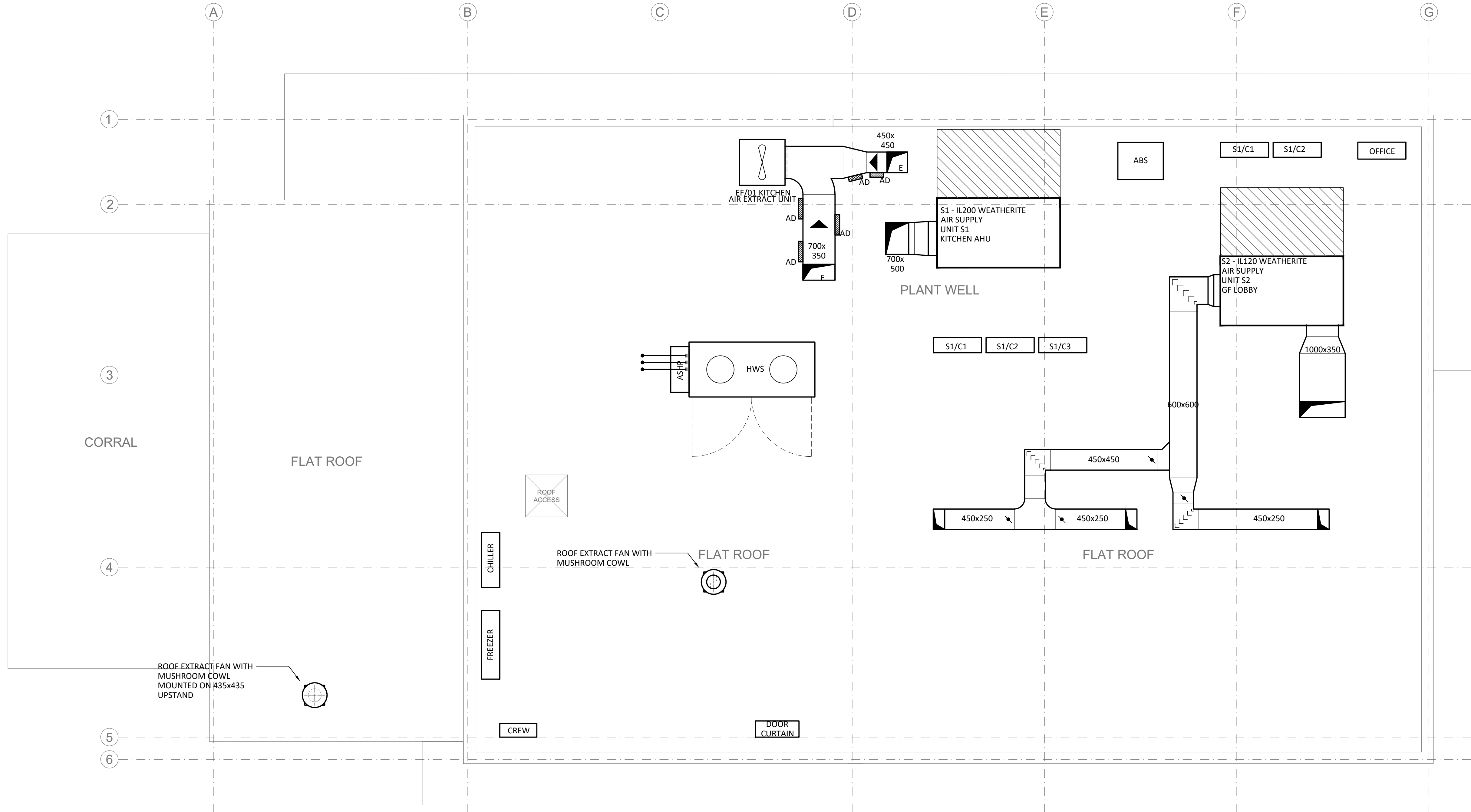


NOTES:

- DO NOT SCALE FROM THIS DRAWING.
- ALL DIMENSIONS ARE IN mm UNLESS INDICATED OTHERWISE.
- WC MAKE UP AIR. DOOR'S BETWEEN THE WC LOBBY AND MALE, FEMALE WC'S TO BE UNDERCUT 20mm FOR AIR TRANSFER.
- TRACE HEATED HVAC CONDENSER DRAIN TRAYS AND DRAINS TO BE PROVIDED
- DINING AREA ALL DUCTWORK AND SERVICES TO BE EXPOSED AND ALL DUCTWORK/SERVICES ETC. SHOULD BE ASSUMED TO BE BLACK UNLESS OTHERWISE INFORMED.
- KITCHEN AREA TO INCORPORATE PROVISION FOR OZONE FILTRATION.



Grilles & Diffuser Schedule												
Reference	Location	No. Off	Air Volume (l/s)	Face size (mm)	Neck Size (mm)	Plenum	Spigot mm & TE/SE	OBD	PD (Pa)	Space NR	Throw (m)	Manufacture/ Model
SG/01-09	Dining Area	9	181	337	-	Y	SE 300	Y	40	40	1.25	KONVEKTA KSFCF - BLACK (RAL TBC)
SG/10	WC Lobby	1	130	337	-	Y	SE 250	Y	16	40	0.8	KONVEKTA KSFCF - RAL 9010
SG/12	Cash Booth	1	20	300x200	-	Y	SE 200	Y	15	45		GDL F/B LOUVRE - RAL 9010
SG/13-22	Kitchen	10	236	600x600	-	Y	SE 300	Y	15	45		KONVEKTA SKP - RAL 9003
SG/23	Office	1	20	150Dia	-	X	TE 150	X	22	35	0.7	HOTCHKISS SUPPLY VALVE - RAL 9010
EG/05-07	Female WC	3	16	150 Dia	-	X	TE 125	X	20	45		HOTCHKISS EXTRACT VALVE - RAL 9010
EG/08	Acc WC	1	22	150 Dia	-	X	TE 125	X	32	45		HOTCHKISS EXTRACT VALVE - RAL 9010
EG/09-11	Male WC	3	20	150 Dia	-	X	TE 125	X	29	45		HOTCHKISS EXTRACT VALVE - RAL 9010
EG/12	Female Ch	1	20	150 Dia	-	X	TE 125	X	20	45		HOTCHKISS EXTRACT VALVE - RAL 9010
EG/13	Male Ch	1	20	150 Dia	-	X	TE 125	X	20	45		HOTCHKISS EXTRACT VALVE - RAL 9010
EG/15-16	Beverage Cell	2	300	600x300	-	Y	SE 200	X	15	45		KONVEKTA EKP TYPE - RAL 9003
EG/17	Beverage Cell	1	300	450x350	-	Y	SE 200	X	15	45		KONVEKTA EKP TYPE - RAL 9003
EG/18	Wash UP	1	240	600x600	-	Y	SE 300	Y	15	45		KONVEKTA EKP TYPE - RAL 9003
EG/20	Cleaners Cpd	1	10	150 Dia	-	X	TE 100	X	20	45		HOTCHKISS EXTRACT VALVE - RAL 9010
TG/01	Store	1	80	450x450	-	X	N/A	X	15	45	N/A	WATERLOO WFGV OR EQUAL
TG/02	Store	1	80	450x450	-	X	N/A	X	15	45	N/A	WATERLOO WFGV OR EQUAL

Equipment Schedule										
Reference	Location	Service	m3/s	Ext Pa	Capacity	Manufacture	Model	Weight	Accessories	Remarks
S1	Roof	Kitchen Supply	2.4	400	63 kW Cooling	Weatherite	Y200	905		
S1/C1, C2 & C3	Roof	S1 Condensers 1,2 & 3				Mitsubishi	ZRP250		FTC Controller Per Condenser. AHU Panel Mounted Remote Controller	Drip Tray Required
S2	Roof	GF Dining Supply	1.65	400	38kW Cooling	Weatherite	Y120	905		
S2/C1 & C2	Roof	S2 Condensers 1&2				Mitsubishi	ZRP200		FTC Controller Per Condenser. AHU Panel Mounted Remote Controller	Drip Tray Required
AC01	Manger Office	Split AC Indoor Unit			3.22kW Cooling, 3.4kW Heating	Mitsubishi	SLZ-M35FA	15	MAC3971F-E Trend Enable Interface. Par 31 controller	
AC01/C1	Roof	Condenser				Mitsubishi	SUZ-M35VA	41	Trend Enable Interface	
AC02	Crew Room	Split AC Indoor Unit			4.25kW Cooling, 4.42kW Heating	Mitsubishi	SLZ-M50FA	13	MAC3971F-E Trend Enable Interface. Par 31 controller	
AC02/C1	Roof	Condenser				Mitsubishi	SUZ-M50VA	35	Procon Trend Enable Interface	
AC03	GF Floor Dining	Air Curtain	0.364		8.3 kW Heating	Thermoscreen	HP 1000RDXE	52	Procon Trend Enable Interface	Recessed model Par 31 Controller
AC03/C1	Roof	Condenser				Mitsubishi	PUZ-ZM71VHA	70		
E1	Roof	Kitchen Extract	2.8	1200	5.5kW	RHF	BW10 500	400	Standard McDonalds Spac. EFF1 Motors. Spring AVM's. Flexible connection. Roller bearings (SN)	Fan Speed to be selected at 2100 RPM

Fan Schedule														
Reference	Description	Location	Design Volume m3/s	RQD Margin %	Design ESP Pa	Required Margin %	Electrical				Speed		Comments/Manufacture/Model	
							Min SFP (W/l/s)	Rating (kW)	Ph	RC (A)	Starting Method	Fan		Motor
EF/01	Kitchen (Roof Plant)		2.8	+10%	1000	+21%			3	15.2	BMS	-	-	RHF BW 10-500 Run/Standby motors, invert control. Final extract air volume to be confirmed by kitchen specialist
EF/02	WC's (Roof Plant)		0.17	+10%	150	+21%	0.6	0.056	1	0.48	-	-	-	Systemair DHS 310EV with weather protection
EF/03	Energizer (Store)		0.16	+10%	15	+21%	0.3	0.056	1	0.48	-	-	-	Systemair DHS 310EV with weather protection

Dx Cooling Schedule													
Reference	Description	Location	No. of Units	Location outdoor unit	No. Units	Cooling Load (kW)	Room C	External Temp C	Sound Pressure level (dBA)	Refrig	Max SEER	Max EER	Comments/Manufacture/Model
AC01	Ceiling Cassette	Office	1	Roof	1	3.22kW	21	30	48	R32	6.7	3.2	Mitsubishi MrSlim/SLZ-M35FA/SUZ-M35VA
AC02	Ceiling Cassette	Crew	1	Roof	1	4.42kW	21	30	51	R32	6.3	3.4	Mitsubishi MrSlim/SLZ-M50FA/SUZ-M50VA
AC03	Air Curtain	Lobby	1	Roof	1	8.3kW (HEATING)	-	-	46	R410a	4.5 SCOP	-	Mitsubishi Thermoscreens HP1000 DXE

P1	PRELIMINARY ISSUE		
REV.	DESCRIPTION	BY	DATE

SILCOCK LEEDHAM Leeds London Dubai
 Upperbank House, Horsforth, Leeds LS18 4BN : UK
 t: (0)113 3933310
 w: silco.co.uk
 @silcockleedham

Building Services Consulting Engineers
 MEP design | building physics | commissioning management | building information modelling



Client
elliott
 An ALGECO SCOTSMAN Company

Architect
 ELLIOTT

Job Title
 McDonalds Building NG100 (Non Telescopic) Standard

Drawing Title

**MECHANICAL SERVICES
 ROOF LEVEL
 STANDARD VENTILATION LAYOUT**

Scale	1:50 @ A1	Drawn	RP	SLCE Project No.	#####
Date	MARCH 2021	Checked	WP		

Drawing Number	PROJECT - ORIGINATOR - ZONE - LEVEL - TYPE - ROLE - NUMBER	STATUS	REV
###	-SLCE-ZZ-RF-DR-M-5702	S0	P1

PRELIMINARY