

NOTES

1. THIS DRAWING IS TO BE READ IN CONJUNCTION WITH ALL RELEVANT ENGINEERS, ARCHITECTS AND SPECIALISTS DRAWINGS AND THE SPECIFICATION.
2. DO NOT SCALE FROM THIS DRAWING MANUALLY OR ELECTRONICALLY. WRITTEN PERMISSION MUST BE OBTAINED FROM MLM PRIOR TO SCALING ELECTRONICALLY OR USING THIS ELECTRONIC FILE.

CONSTRUCTION (DESIGN AND MANAGEMENT) REGULATIONS 2015

DESIGNERS HAZARD INFORMATION FOR CONSTRUCTION

1. IF YOU DO NOT FULLY UNDERSTAND THE RISKS INVOLVED DURING THE CONSTRUCTION OF THE ITEMS INDICATED ON THIS DRAWING ASK YOUR MANAGER, HEALTH & SAFETY ADVISOR OR A MEMBER OF THE DESIGN TEAM BEFORE PROCEEDING.

THE ABOVE NOTES REFER SPECIFICALLY TO THE INFORMATION SHOWN ON THIS DRAWING.
REFER TO THE HEALTH AND SAFETY PLAN FOR FURTHER INFORMATION.

T02	13.11.2019	PIPE PROTECTION NOTE ADDED	DS	DK	DK
T01	07.11.2019	DRAINAGE ADDED ONTO LONG SECTIONS	DS	DK	DK
REV	DATE	REVISION	MADE	CHK	APP

DRAWING STATUS: **TENDER**

SUITABILITY DESCRIPTION: **SUITABLE FOR INFORMATION**



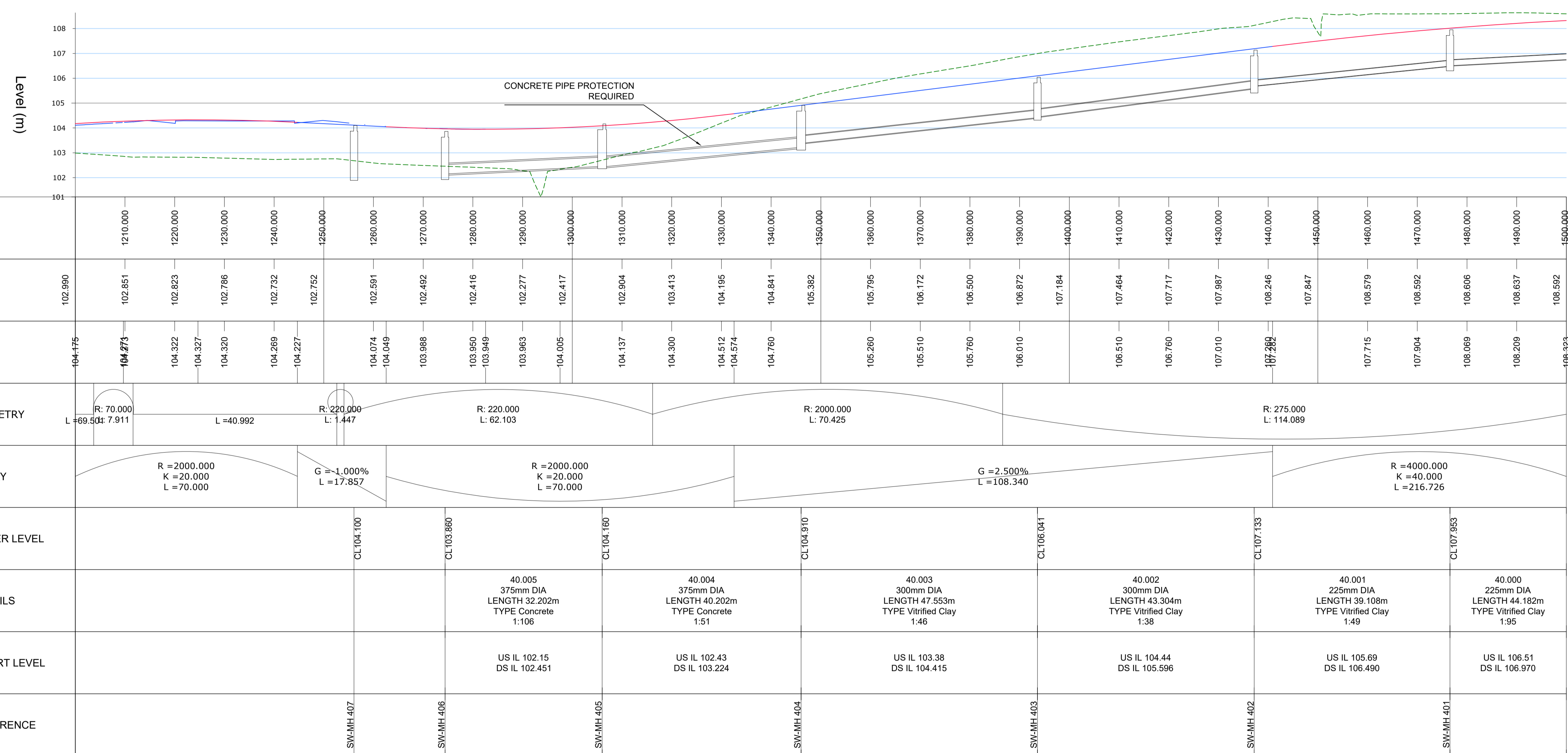
Connect 38,
1 Dover Place, Ashford,
Kent, TN23 1FB
Tel: 01233 610530
Website: www.mlmgroupp.com



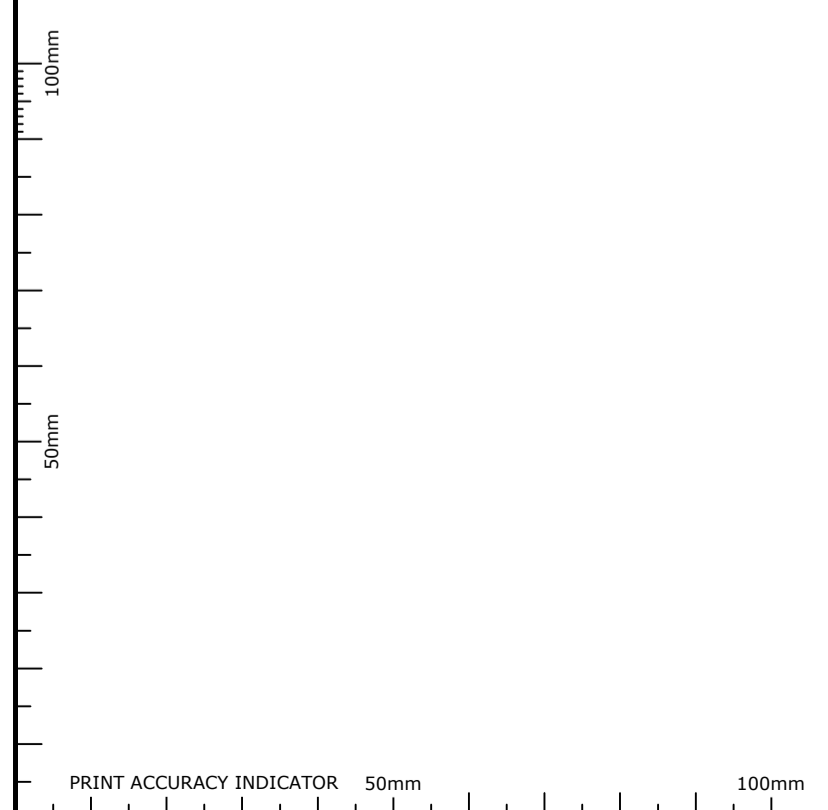
PROJECT: **NORTHWEST HAVERHILL RELIEF ROAD**

DRAWING TITLE: **PROPOSED LONG-SECTIONS SHEET 5 OF 6**

DRAWN/DESIGN	LB	MLM REF	STATUS	REVISION
SCALE	1:500 @A1	619132	S2	T02
PROJECT	ORIGINATOR	VOLUME/ SYSTEM	LEVELS & LOCATIONS	TYPE
619132-MLM-ZZ-XX-DR-C-0025				ROLE NUMBER



RELIEF ROAD - LONGSECTION (1200-1500)
SCALE: H 1:500, V 1:100. DATUM: 101.223



PRINT ACCURACY INDICATOR 50mm 100mm