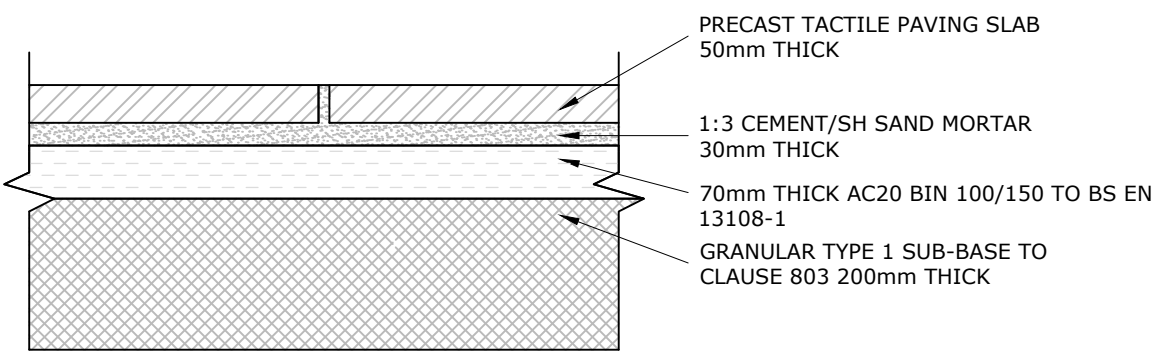
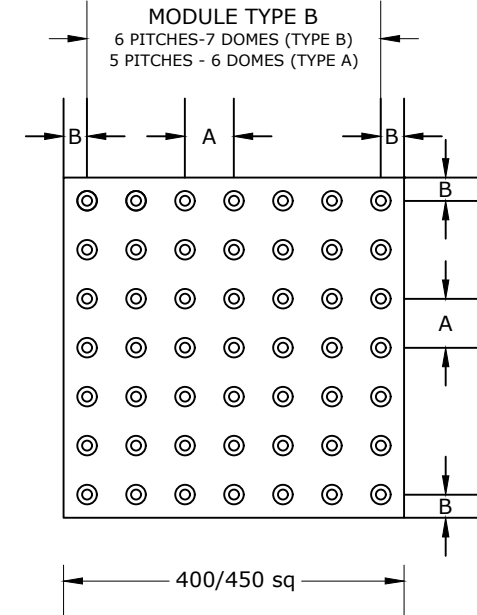


**NOTES**

1. COLOUR - ONLY BUFF IS TO BE USED FOR UNCONTROLLED CROSSINGS.
2. MATERIALS - THE TACTILE SURFACE MAY BE CONSTRUCTED FROM ANY MATERIAL SUITABLE FOR PAVING FOOTWAY SURFACES.
3. THE ACTUAL DEPTH OF THE SLAB WILL BE RELATED TO THE MATERIALS USED TO CONSTRUCT THE MODULES.

MODULE TYPE	SIZE	PITCH DIMENSION	
		A	B
A	400 sq.	66.8	33
B	450 sq.	64	33

TOLERANCE±2



TACTILE PAVING DETAIL  
(SCALE 1:10)

**NOTES**

1. THIS DRAWING IS TO BE READ IN CONJUNCTION WITH ALL RELEVANT ENGINEERS, ARCHITECTS AND SPECIALISTS DRAWINGS AND THE SPECIFICATION.
2. DO NOT SCALE FROM THIS DRAWING MANUALLY OR ELECTRONICALLY. WRITTEN PERMISSION MUST BE OBTAINED FROM MLM PRIOR TO SCALING ELECTRONICALLY OR USING THIS ELECTRONIC FILE.
3. WHERE CBR < 2.5% IT IS CONSIDERED UNSUITABLE SUPPORT FOR A PAVEMENT FOUNDATION AND MUST BE PERMANENTLY IMPROVED, SEE IMPROVEMENTS BOX BELOW.
4. RESTRICTED FOUNDATION DESIGN IS INTENDED FOR USE WHERE IT IS INAPPROPRIATE TO CARRY OUT THE RANGE OF COMPLIANCE TESTING REQUIRED FOR PERFORMANCE RELATED SPECIFICATION FOR FOUNDATIONS (PRSF).
5. WHERE BOUND SUB-BASE MIXTURES ARE PERMITTED IN RESTRICTED FOUNDATION DESIGN THEY ARE RESTRICTED TO THOSE USING CEM1 AS THE PRIMARY BINDER.
6. CAPPING MATERIAL MAY COMPRISE 6F1, 6F2, 6F3, 6F4, 6F5 & 6S - ALL TO SPECIFICATION SERIES 600 OF THE MCHW.

**CONSTRUCTION (DESIGN AND MANAGEMENT) REGULATIONS 2015**

**DESIGNERS HAZARD INFORMATION FOR CONSTRUCTION**

1. IF YOU DO NOT FULLY UNDERSTAND THE RISKS INVOLVED DURING THE CONSTRUCTION OF THE ITEMS INDICATED ON THIS DRAWING ASK YOUR MANAGER, HEALTH & SAFETY ADVISOR OR A MEMBER OF THE DESIGN TEAM BEFORE PROCEEDING.

THE ABOVE NOTES REFER SPECIFICALLY TO THE INFORMATION SHOWN ON THIS DRAWING.  
REFER TO THE HEALTH AND SAFETY PLAN FOR FURTHER INFORMATION.

T01	07.11.2019	FIRST ISSUE	DS	DK	DK
REV	DATE	REVISION	MADE	CHK	APP

DRAWING STATUS  
**TENDER**

SUITABILITY DESCRIPTION  
SUITABLE FOR INFORMATION



Connect 38,  
1 Dover Place, Ashford,  
Kent, TN23 1FB  
Tel: 01233 610530  
Website: www.mlmgroupp.com

Part of Sweco

CLIENT



PROJECT  
**NORTHWEST HAVERHILL RELIEF ROAD**

DRAWING TITLE  
**HIGHWAY CONSTRUCTION DETAILS**

DRAWN/DESIGN	DS	MLM REF	STATUS	REVISION
SCALE	1:500 @A1	619132	S2	T01
PROJECT	ORIGINATOR	VOLUME/ SYSTEM	LEVELS & LOCATIONS	TYPE
619132-MLM-ZZ-XX-DR-C-0076				NUMBER

