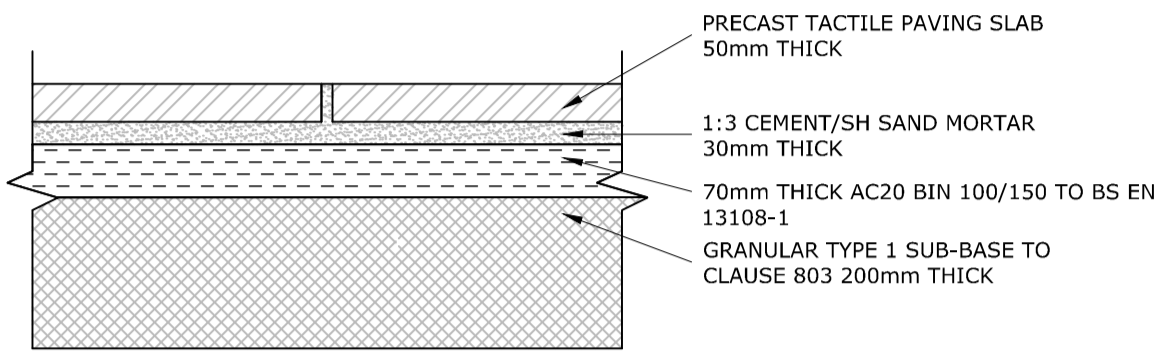
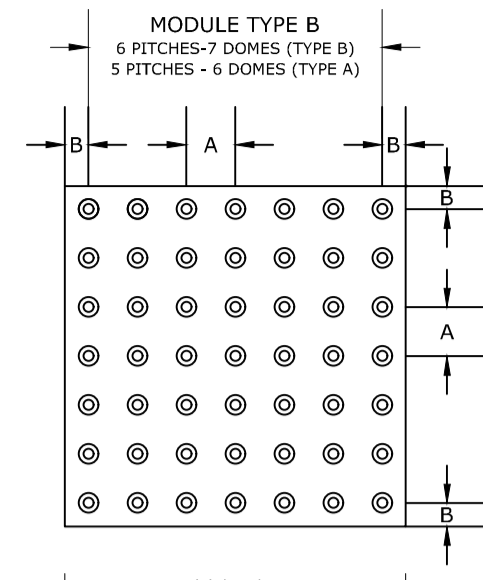


NOTES

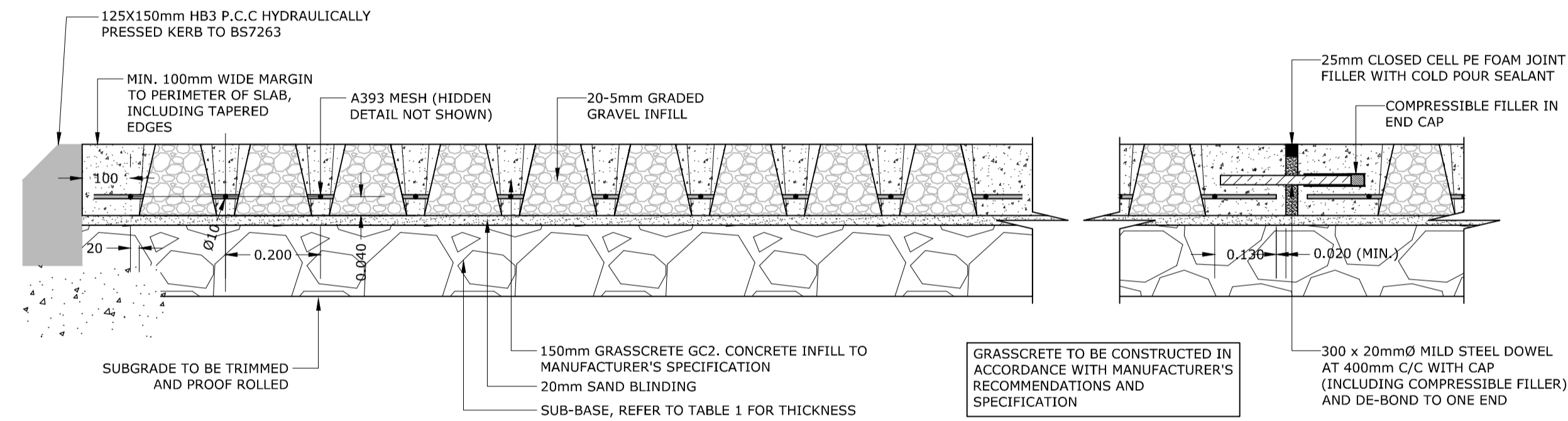
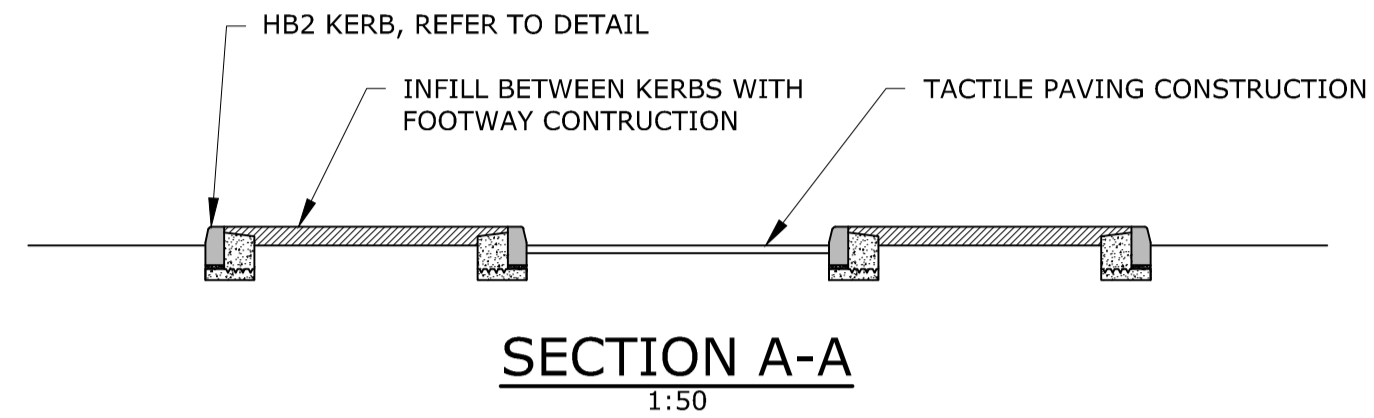
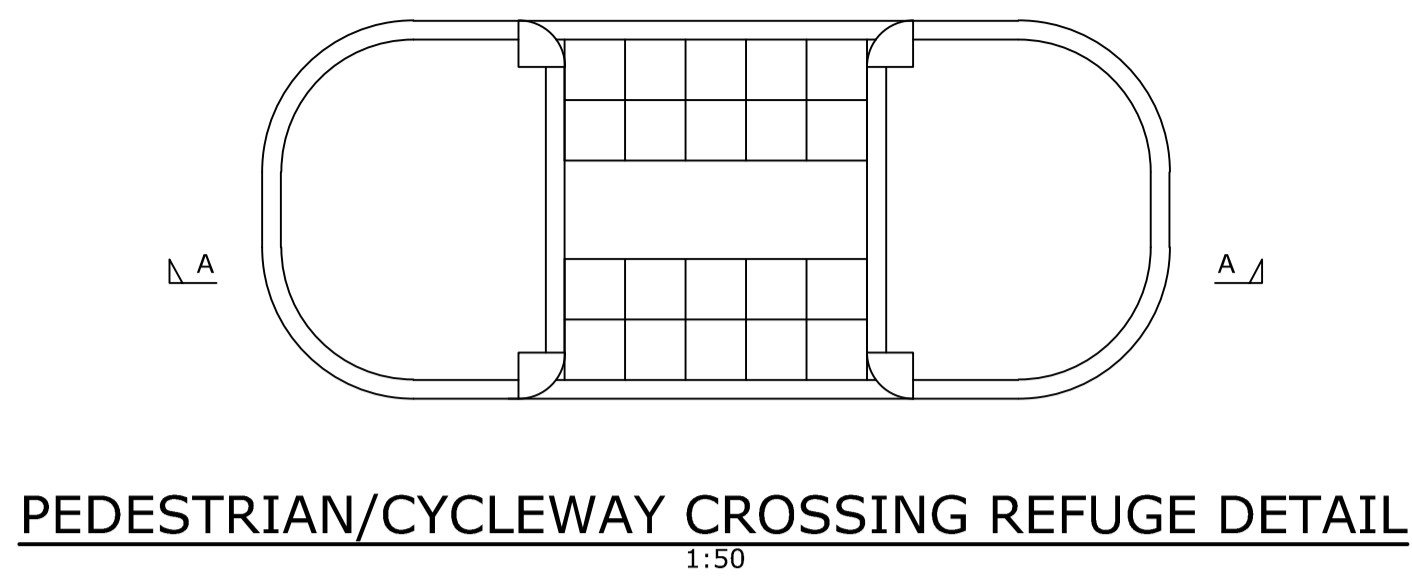
- COLOUR - ONLY BUFF IS TO BE USED FOR UNCONTROLLED CROSSINGS.
- MATERIALS - THE TACTILE SURFACE MAY BE CONSTRUCTED FROM ANY MATERIAL SUITABLE FOR PAVING FOOTWAY SURFACES.
- THE ACTUAL DEPTH OF THE SLAB WILL BE RELATED TO THE MATERIALS USED TO CONSTRUCT THE MODULES.

MODULE TYPE	SIZE	PITCH DIMENSION	
		A	B
A	400 sq.	66.8	33
B	450 sq.	64	33

TOLERANCE ±2



TACTILE PAVING DETAIL
(SCALE 1:10)



MAINTENANCE VEHICLE LAY-BY GRASSCRETE CONSTRUCTION DETAIL
1:10

EXPANSION JOINTS AT MAX 10.0m CC'S
1:10

CBR (%)	SUB-BASE THICKNESS (mm)
<2	530
2	380
3	300
4	220
5	180
>5	150

TABLE 1: SUB-BASE THICKNESS, TO BE COMPRISED OF MIN. 150mm TYPE 1 FILL MATERIAL, OVER EITHER TYPE 1 FILL MATERIAL OR 6F5 CAPPING MATERIAL.

NOTES

- THIS DRAWING IS TO BE READ IN CONJUNCTION WITH ALL RELEVANT ENGINEERS, ARCHITECTS AND SPECIALISTS DRAWINGS AND THE SPECIFICATION.
- DO NOT SCALE FROM THIS DRAWING MANUALLY OR ELECTRONICALLY. WRITTEN PERMISSION MUST BE OBTAINED FROM MLM PRIOR TO SCALING ELECTRONICALLY OR USING THIS ELECTRONIC FILE.
- WHERE CBR < 2.5% IT IS CONSIDERED UNSUITABLE SUPPORT FOR A PAVEMENT FOUNDATION AND MUST BE PERMANENTLY IMPROVED, SEE IMPROVEMENTS BOX BELOW.
- RESTRICTED FOUNDATION DESIGN IS INTENDED FOR USE WHERE IT IS INAPPROPRIATE TO CARRY OUT THE RANGE OF COMPLIANCE TESTING REQUIRED FOR PERFORMANCE RELATED SPECIFICATION FOR FOUNDATIONS (PRSF).
- WHERE BOUND SUB-BASE MIXTURES ARE PERMITTED IN RESTRICTED FOUNDATION DESIGN THEY ARE RESTRICTED TO THOSE USING CEM1 AS THE PRIMARY BINDER.
- CAPPING MATERIAL MAY COMPRISE 6F1, 6F2, 6F3, 6F4, 6F5 & 6S - ALL TO SPECIFICATION SERIES 600 OF THE MCHW.

CONSTRUCTION (DESIGN AND MANAGEMENT) REGULATIONS 2015

DESIGNERS HAZARD INFORMATION FOR CONSTRUCTION

- IF YOU DO NOT FULLY UNDERSTAND THE RISKS INVOLVED DURING THE CONSTRUCTION OF THE ITEMS INDICATED ON THIS DRAWING ASK YOUR MANAGER, HEALTH & SAFETY ADVISOR OR A MEMBER OF THE DESIGN TEAM BEFORE PROCEEDING.
- WORKS ADJACENT TO LIVE PUBLIC HIGHWAY.
- DEEP EXCAVATIONS.
- WORKING NEAR OPEN WATER.
- EXISTING SERVICES.
- DEEP DRAINAGE.

THE ABOVE NOTES REFER SPECIFICALLY TO THE INFORMATION SHOWN ON THIS DRAWING.
REFER TO THE HEALTH AND SAFETY PLAN FOR FURTHER INFORMATION.

T02	21.02.20	REFUGE ISLAND & MAINTENANCE LAYBY DETAIL ADDED	TM	SJC	SJC
T01	07.11.2019	FIRST ISSUE	DS	DK	DK
REV	DATE	REVISION	MADE	CHK	APP

TENDER

SUITABILITY DESCRIPTION
SUITABLE FOR INFORMATION

Connect 38,
1 Dover Place, Ashford,
Kent, TN23 1FB
Tel: 01233 610530
Website: www.mlmgroupp.com

CLIENT
PERSIMMON

PROJECT
NORTHWEST HAVERHILL RELIEF ROAD

DRAWING TITLE
HIGHWAY CONSTRUCTION DETAILS

DRAWN/DESIGN	DS	MLM REF	STATUS	REVISION
SCALE	1:500 @A1	619132	S2	T02
PROJECT	ORIGINATOR	VOLUME/ SYSTEM	LEVELS & LOCATIONS	TYPE
619132-MLM-ZZ-XX-DR-C-0076				NUMBER

