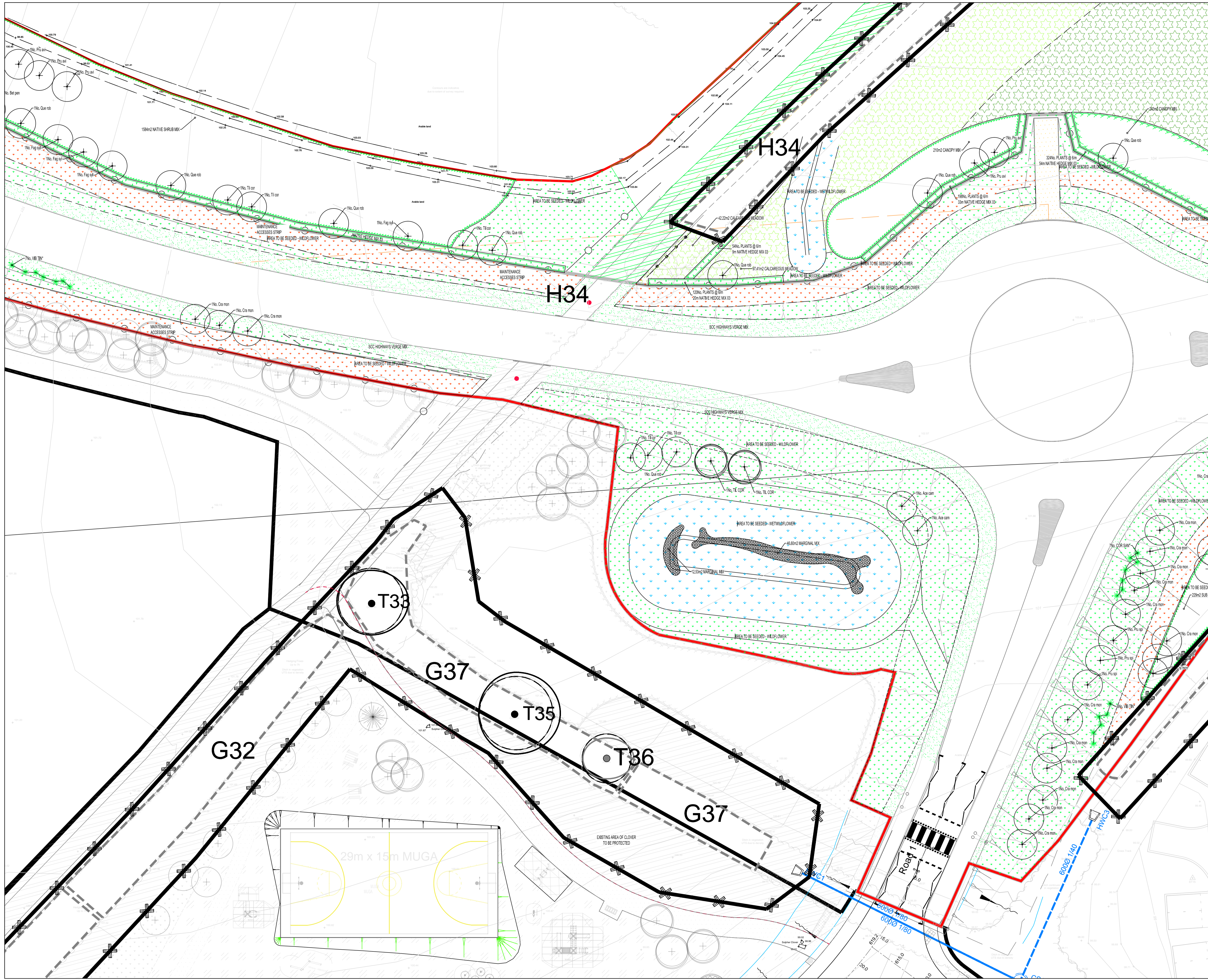




# KEY

## SOFT WORKS

- PROPOSED FEATHERED TREE, INCLUDING STAKE, BIODEGRADABLE SPIRAL AND TIE. SEE SPECIFICATION NOTES A1, B2-3, B5, C1-4, D1-2 AND E1.
- PROPOSED STANDARD TREE, INCLUDING DOUBLE STAKE AND TIE. SEE SPECIFICATION NOTES A1, B2-3, B5, C1-4, D1-2 AND E1.
- PROPOSED HEAVY STANDARD TREE, INCLUDING DOUBLE STAKE AND TIE. SEE SPECIFICATION NOTES A1, B2-3, B5, C1-4, D1-2 AND E1.
- NATIVE WHIP AND SHRUB PLANTING IN MIXES, INCLUDING BIODEGRADABLE SHEET AND BARK MULCH (ACCORDING TO SPECIFICATION). REFER TO HEDGE SCHEDULES ON PLAN AND THE SCHEDULE OF QUANTITIES. SEE SPECIFICATION NOTES A1-2, B1-3, C1-3, D1-2 AND E1.
- HEDGE PLANTING, INCLUDING BIODEGRADABLE SHEET AND BARK MULCH (ACCORDING TO SPECIFICATION). REFER TO HEDGE SCHEDULES ON PLAN AND THE SCHEDULE OF QUANTITIES. SEE SPECIFICATION NOTES A1-2, B1-3, B5, C1-3, D1-2 AND E1.
- FLORAL LAWN SEEDED AREA. REFER TO PLANT SCHEDULE FOR SPECIFICATION OF MIX.
- SSC HIGHWAYS VERGE MIX UNLESS OTHERWISE STATED ON PLAN. SEE SPECIFICATION NOTES B4, C5 AND E1.
- WILDFLOWER MEADOW SEEDED AREA. REFER TO PLANT SCHEDULE FOR SPECIFICATION OF MIX.
- WETLAND WILDFLOWER SEEDED AREA. REFER TO PLANT SCHEDULE FOR SPECIFICATION OF MIX.
- MAINTENANCE ACCESS STRIP TO BE WILDFLOWER SEEDED AREA. REFER TO PLANT SCHEDULE FOR SPECIFICATION OF MIX.
- RIBBED ROOT BARRIER REROOT 1000.
- FOOTPATHS TO BE BITUMEN MACADAM, ALL DEPTHS TO ENGINEER'S SPECIFICATION AND ALL TO HIGHWAYS AUTHORITY APPROVAL.
- RELIEF ROAD DCON BOUNDARY- REFERENCE DCON(H)091283
- EXISTING TREE TO BE RETAINED, SEE GENERAL NOTE A1 AND E1, IF PREPARED, SEE ALSO JAMES BLAKE ASSOCIATES PLAN AND SCHEDULE FOR ANY SURGERY WORKS.
- EXISTING VEGETATION GROUP OR HEDGE TO BE RETAINED, SEE GENERAL NOTE A1 AND E1, IF PREPARED, SEE ALSO JAMES BLAKE ASSOCIATES PLAN AND SCHEDULE FOR ANY SURGERY WORKS.
- AREA TO BE RETAINED GROUND FLORA
- TREE PROTECTION FENCING - SEE JBA TREE PROTECTION PLANS FOR MORE DETAILS
- NATIVE SPECIMEN SHRUBS IN GRASS, TO BE EITHER WHIPS OR CONTAINER GROWN. SPECIMEN SHRUBS IN GRASS ARE MEASURED SEPARATELY IN SCHEDULE OF QUANTITIES. SEE SPECIFICATION NOTES A1, B1-3, C1-3, D1-2 AND E1.
- MARGINAL PLANTING. REFER TO PLANT SCHEDULE FOR SPECIFICATION OF MIX.
- TUSOCK GRASSLAND. REFER TO PLANT SCHEDULE FOR SPECIFICATION OF MIX.
- CALCAREOUS GRASSLAND. REFER TO PLANT SCHEDULE FOR SPECIFICATION OF MIX.



21.01.20	DLR	UPDATED RED LINE BOUNDARY FOR RELIEF ROAD RECEIVED 14.01.20
21.02.21	DLR	AMENDED TO CLIENT COMMENTS
20.02.21	DLR	UPDATED LATE LAYOUT
11.10.20	DLR	UPDATED TO LPA COMMENTS AND LATE LAYOUT RECEIVED 09.09.20 AND 06.10.20
24.07.20	DLR	UPDATED TO LPA COMMENTS AND LATE LAYOUT RECEIVED 17.07.20
11.01.19	DLR	UPDATED TO LPA COMMENTS RECEIVED 11.01.19
13.01.19	DLR	UPDATED TO LPA COMMENTS RECEIVED 06.10.19
09.01.19	DLR	UPDATED TO LPA COMMENTS RECEIVED 26.02.19
REV.	DATE	REVISION
1	17/01/20	ISSUED

CLIENT	FORBIMON HOMES SUFFOLK	DWG TITLE	DETAILED SOFT LANDSCAPE PROPOSALS FOR INFRASTRUCTURE AREAS
SITE	HAVERHILL, RELIEF ROAD, HAVERHILL		
PURPOSE OF ISSUE	PLANNING		
DRG BY	JM	CHECKED	BA
SCALE	1:250@A1	DATE	JANUARY 2018
DWG NO.	JBAT1364 05	REV.	7

**James Blake Associates**

LANDSCAPE ARCHITECTURE • ARBORICULTURE • ECOLOGY

HEAD OFFICE  
The Black Barn, Hall Road, Lavenham, Suffolk, CO19 9XQ  
Tel: (01787) 248216 Fax: (01787) 247264  
jamesblake@jamesblake.com www.jamesblake.com