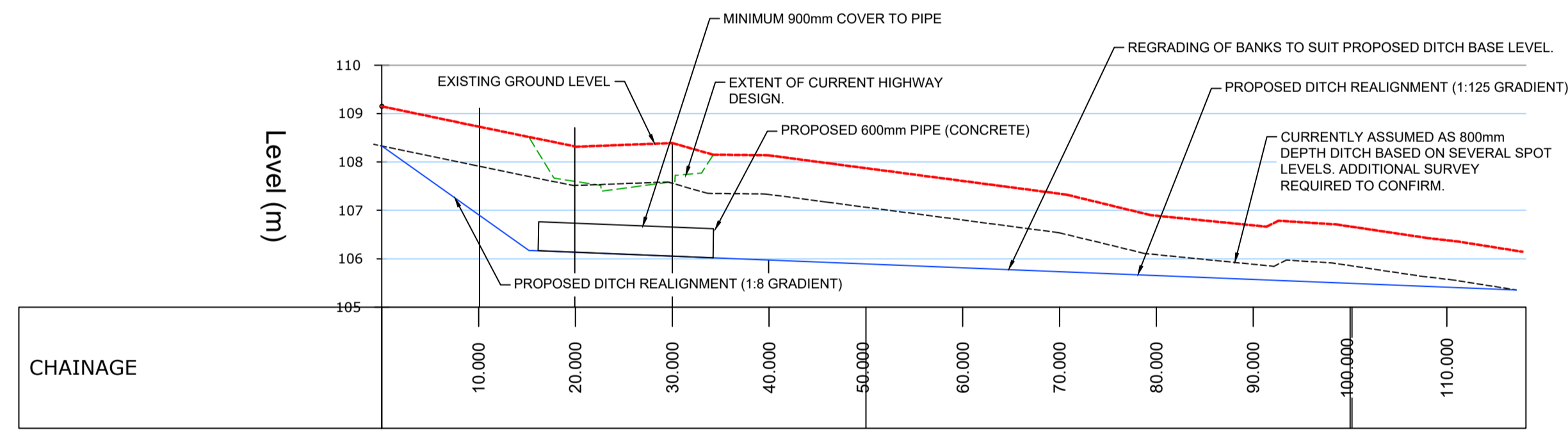
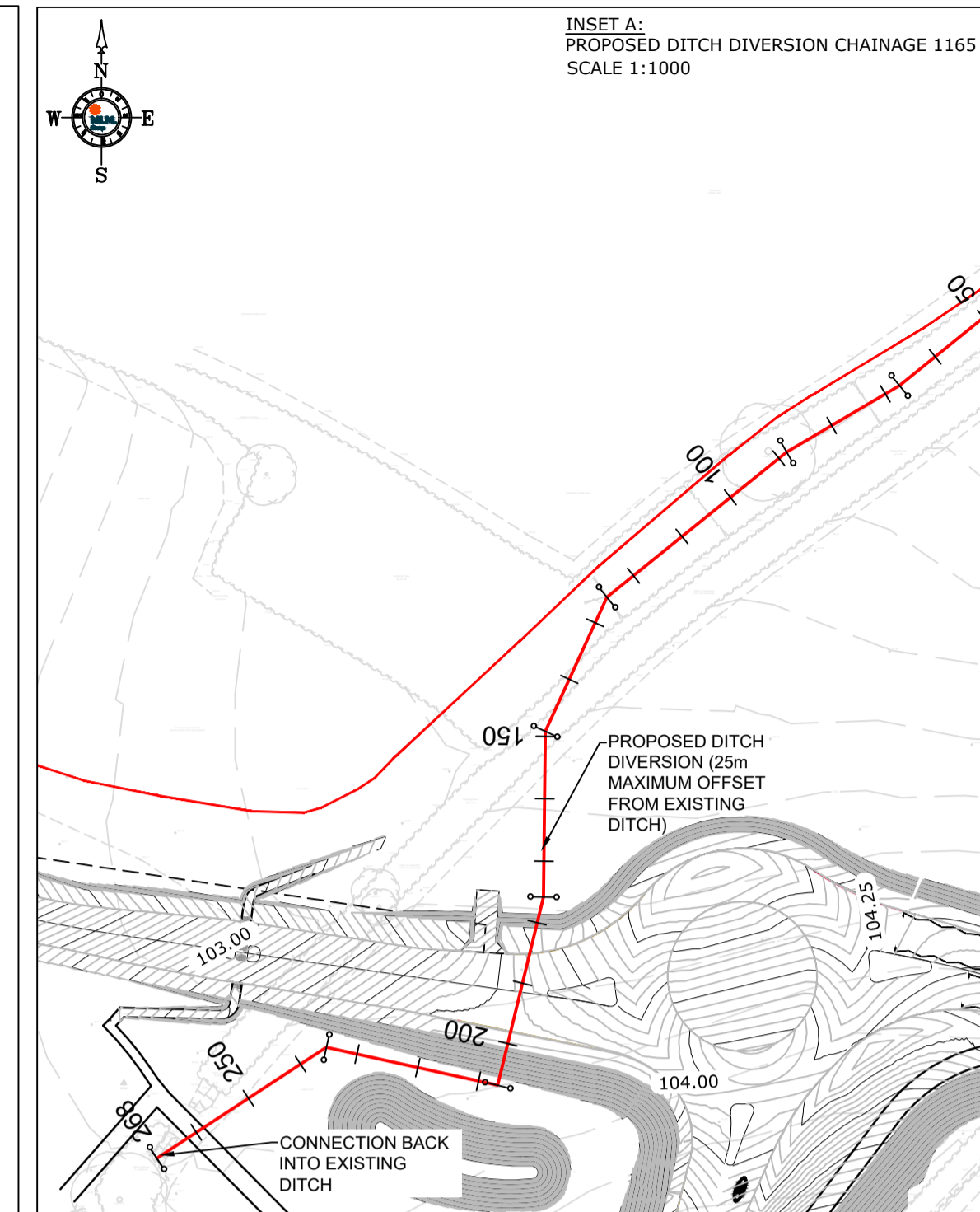
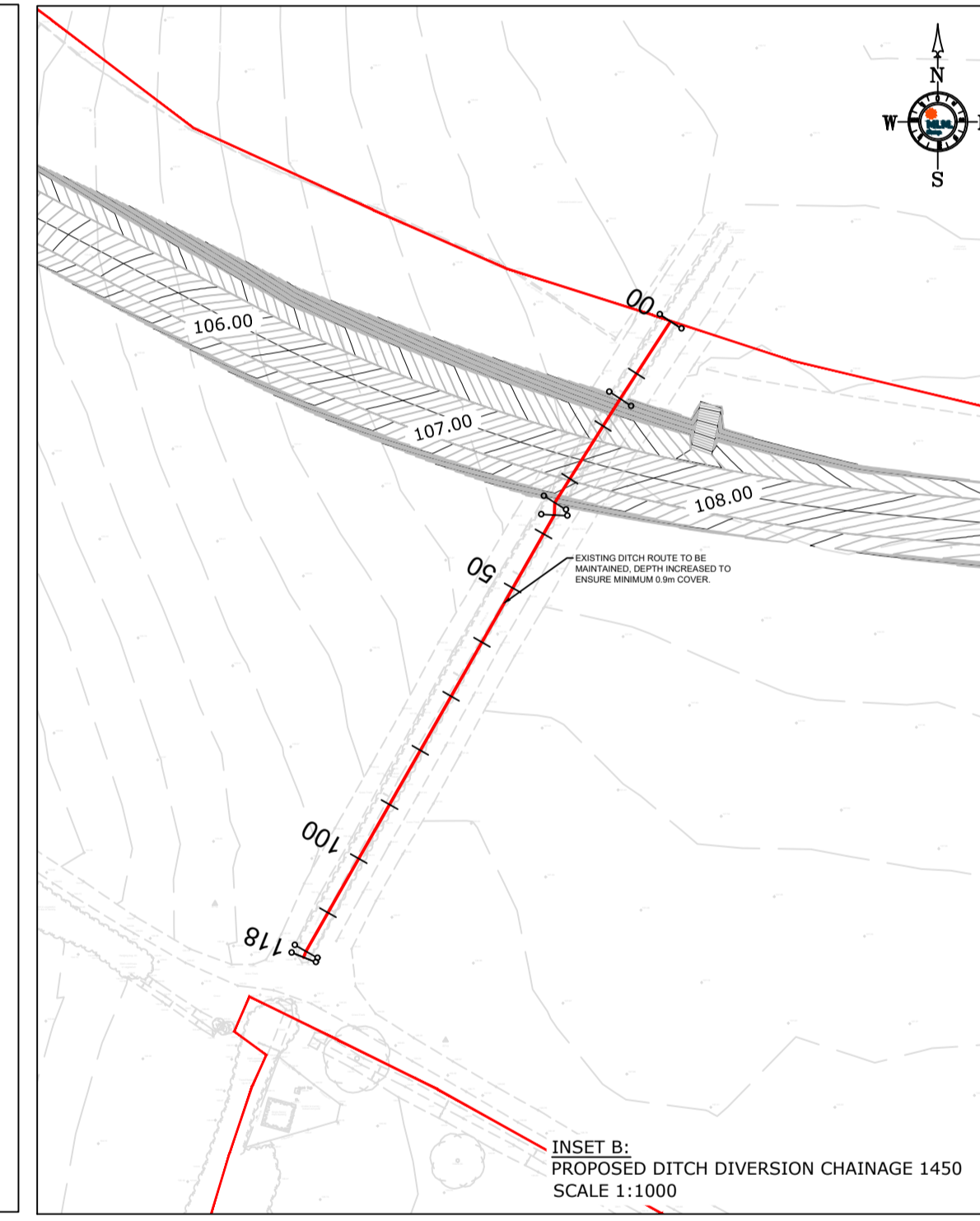


CHAINAGE 1165 - PROPOSED DITCH DIVERSION
SCALE: H 1:500, V 1:100. DATUM: 100.000



CHAINAGE 1450 - PROPOSED DITCH DIVERSION
SCALE: H 1:500, V 1:100. DATUM: 105.000



NOTES

- THIS DRAWING IS TO BE READ IN CONJUNCTION WITH ALL RELEVANT ENGINEERS, ARCHITECTS AND SPECIALISTS DRAWINGS AND THE SPECIFICATION.
- DO NOT SCALE FROM THIS DRAWING MANUALLY OR ELECTRONICALLY. WRITTEN PERMISSION MUST BE OBTAINED FROM MLM PRIOR TO SCALING ELECTRONICALLY OR USING THIS ELECTRONIC FILE.

CONSTRUCTION (DESIGN AND MANAGEMENT) REGULATIONS 2015

DESIGNERS HAZARD INFORMATION FOR CONSTRUCTION

1. IF YOU DO NOT FULLY UNDERSTAND THE RISKS INVOLVED DURING THE CONSTRUCTION OF THE ITEMS INDICATED ON THIS DRAWING ASK YOUR MANAGER, HEALTH & SAFETY ADVISOR OR A MEMBER OF THE DESIGN TEAM BEFORE PROCEEDING.

THE ABOVE NOTES REFER SPECIFICALLY TO THE INFORMATION SHOWN ON THIS DRAWING.
REFER TO THE HEALTH AND SAFETY PLAN FOR FURTHER INFORMATION.

T01	06.09.2019	STATUS AMENDED	DS	DK	DK
P01	20.07.2019	FIRST ISSUE	LB	DK	DK
REV	DATE	REVISION	MADE	CHK	APP

DRAWING STATUS: **TENDER**

SUITABILITY DESCRIPTION: **SUITABLE FOR INFORMATION**

MLM Group
Part of Sweco

Connect 38,
1 Dover Place, Ashford,
Kent, TN23 1FB
Tel: 01233 510530
Website: www.mlmgroupp.com

CLIENT: **PERSIMMON**

PROJECT: **NORTH WEST HAVERHILL RELIEF ROAD**

DRAWING TITLE: **PROPOSED DITCH AMENDMENTS**

DRAWN/DESIGN	LB	MLM REF	STATUS	REVISION
SCALE	SHOWN @A1	619132	S2	T01
PROJECT	ORIGINATOR	VOLUME/ SYSTEM	LEVELS & LOCATIONS	TYPE
619132-MLM-ZZ-XX-DR-C-9010				

