

NOTES

1. THIS DRAWING IS TO BE READ IN CONJUNCTION WITH ALL RELEVANT ENGINEERS, ARCHITECTS AND SPECIALISTS DRAWINGS AND THE SPECIFICATION.
2. DO NOT SCALE FROM THIS DRAWING MANUALLY OR ELECTRONICALLY. WRITTEN PERMISSION MUST BE OBTAINED FROM MLM PRIOR TO SCALING ELECTRONICALLY OR USING THIS ELECTRONIC FILE.

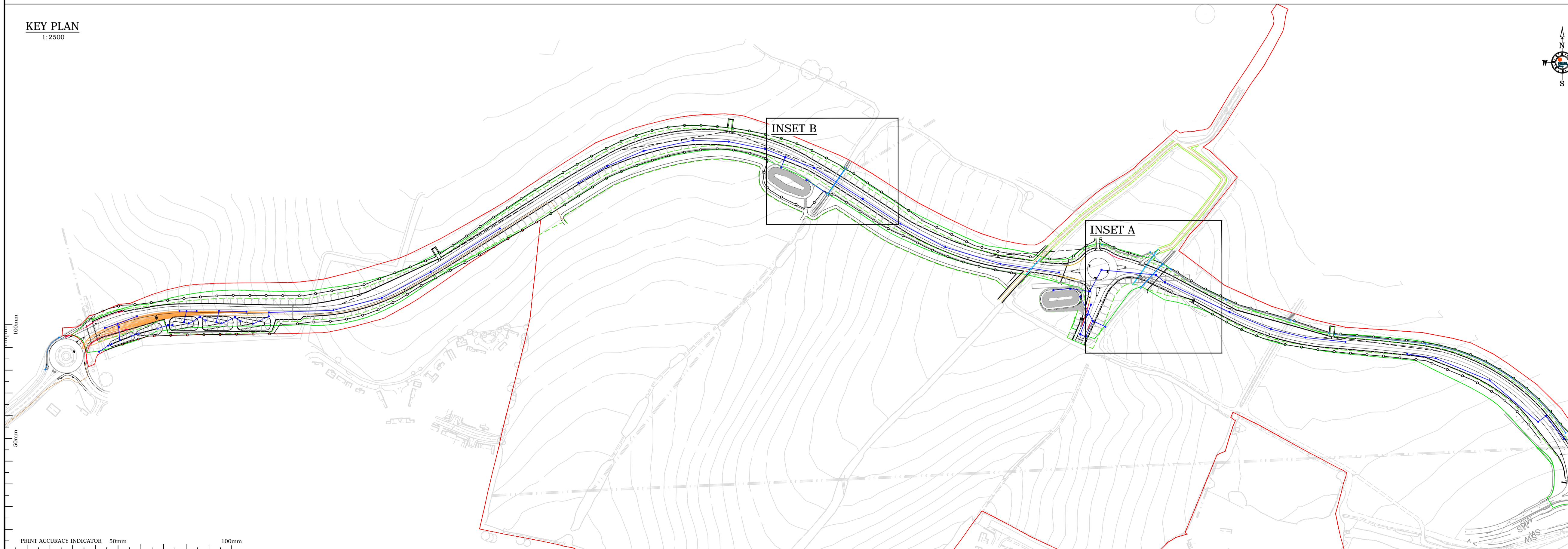
CONSTRUCTION (DESIGN AND MANAGEMENT) REGULATIONS 2015

DESIGNERS HAZARD INFORMATION FOR CONSTRUCTION

1. IF YOU DO NOT FULLY UNDERSTAND THE RISKS INVOLVED DURING THE CONSTRUCTION OF THE ITEMS INDICATED ON THIS DRAWING ASK YOUR MANAGER, HEALTH & SAFETY ADVISOR OR A MEMBER OF THE DESIGN TEAM BEFORE PROCEEDING.
2. WORKS ADJACENT TO LIVE PUBLIC HIGHWAY.
3. DEEP EXCAVATIONS.
4. WORKING NEAR OPEN WATER.
5. EXISTING SERVICES.
6. DEEP DRAINAGE.

THE ABOVE NOTES REFER SPECIFICALLY TO THE INFORMATION SHOWN ON THIS DRAWING.
REFER TO THE HEALTH AND SAFETY PLAN FOR FURTHER INFORMATION.

KEY PLAN
1:2500



C03	02.03.2023	KEY PLAN UPDATED	TM	SP	SP
C02	16.02.2023	CULVERT 5 REMOVED. KEY PLAN UPDATED	TM	SP	SP
C01	05.09.2022	ISSUED FOR CONSTRUCTION	TM	JRC	JRC
REV	DATE	REVISION	MADE	CHK	APP

CONSTRUCTION
SUITABILITY DESCRIPTION

MLM Group
Part of Sweco

Connect 38,
1 Dover Place, Ashford,
Kent, TN23 1FB
Tel: 01233 610530
Website: www.mlmgroupp.com

CLIENT

PROJECT
NORTH WEST HAVERHILL RELIEF ROAD

DRAWING TITLE
CULVERT LONG SECTIONS

DRAWN/DESIGN	DS	MLM REF	STATUS	REVISION
SCALE	NOTED @A1	619132	-	C03
PROJECT	ORIGINATOR	VOLUME/ SYSTEM	LEVELS & LOCATIONS	TYPE
619132-MLM-ZZ-XX-DR-C-0049				