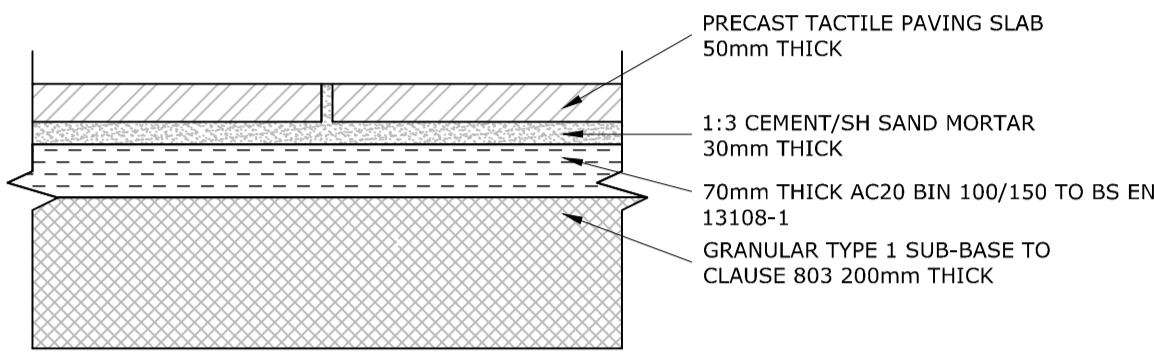
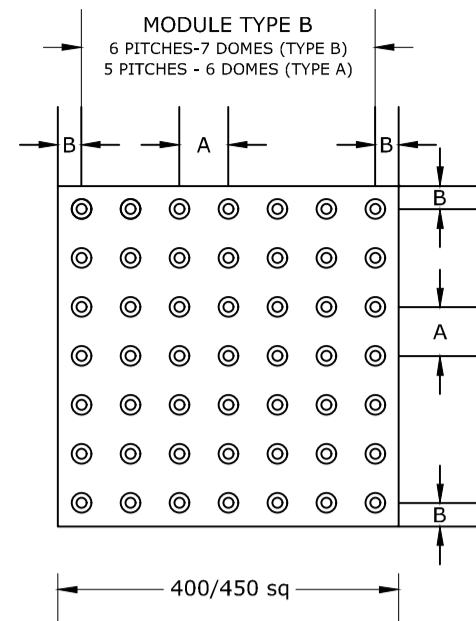


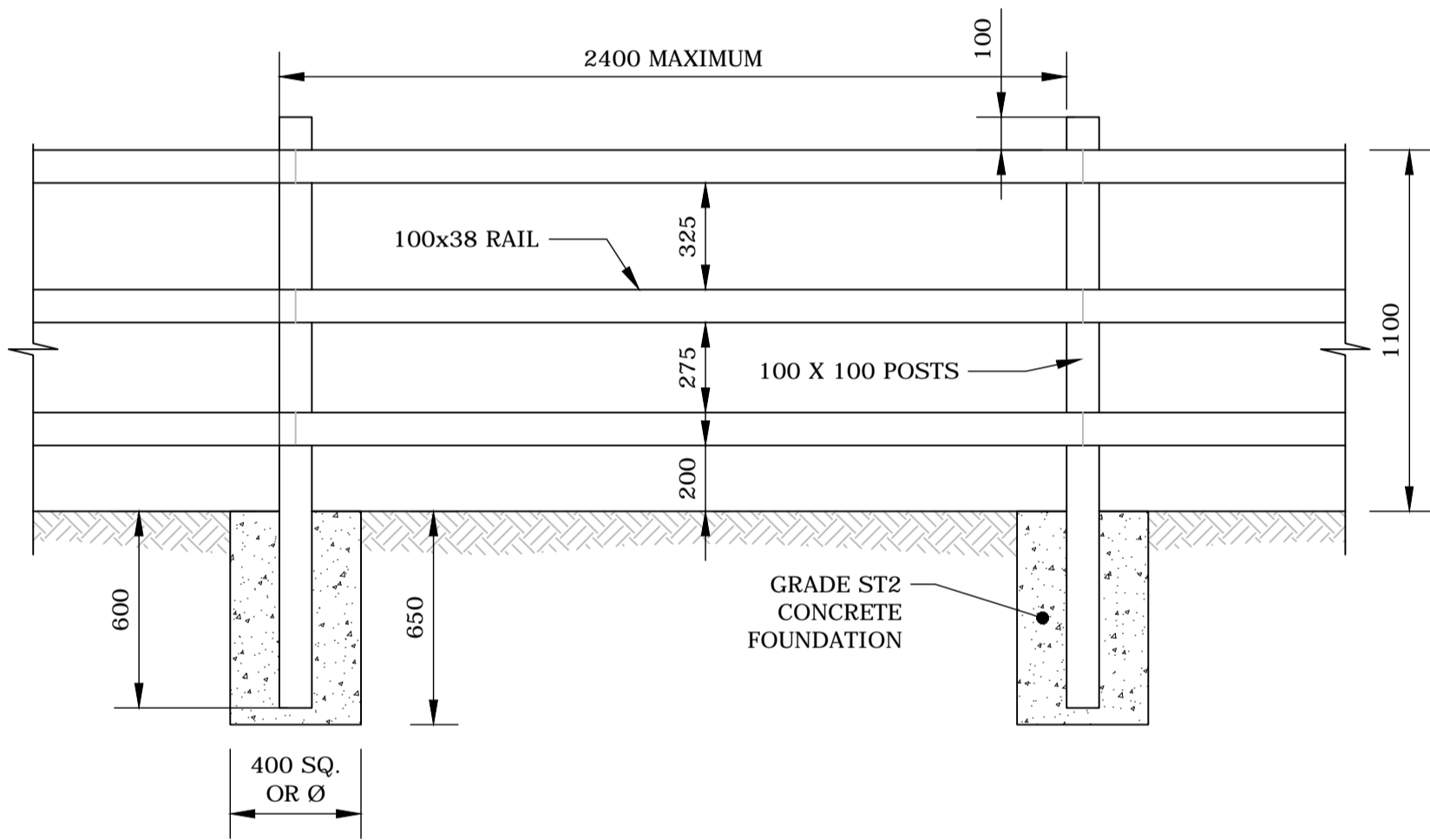
**NOTES**

1. COLOUR - ONLY BUFF IS TO BE USED FOR UNCONTROLLED CROSSINGS.
2. MATERIALS - THE TACTILE SURFACE MAY BE CONSTRUCTED FROM ANY MATERIAL SUITABLE FOR PAVING FOOTWAY SURFACES.
3. THE ACTUAL DEPTH OF THE SLAB WILL BE RELATED TO THE MATERIALS USED TO CONSTRUCT THE MODULES.

MODULE TYPE	SIZE	PITCH DIMENSION	
		A	B
A	400 sq.	66.8	33
B	450 sq.	64	33
TOLERANCE ±2			



**TACTILE PAVING DETAIL**  
(SCALE 1:10)

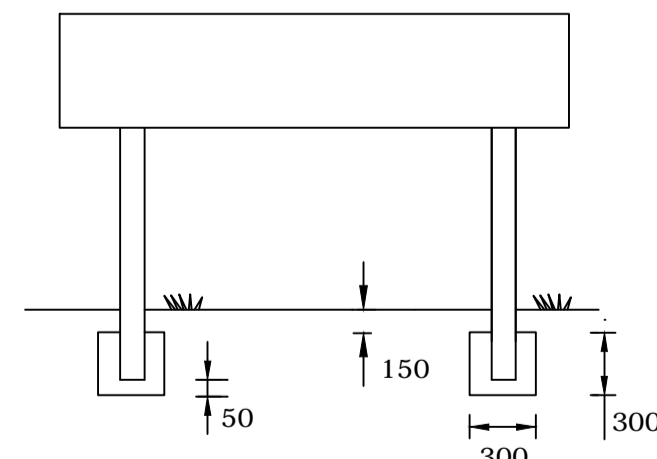


**TIMBER POST AND 3 RAIL FENCE DETAIL**  
1:20

**POST AND RAIL FENCE NOTES**

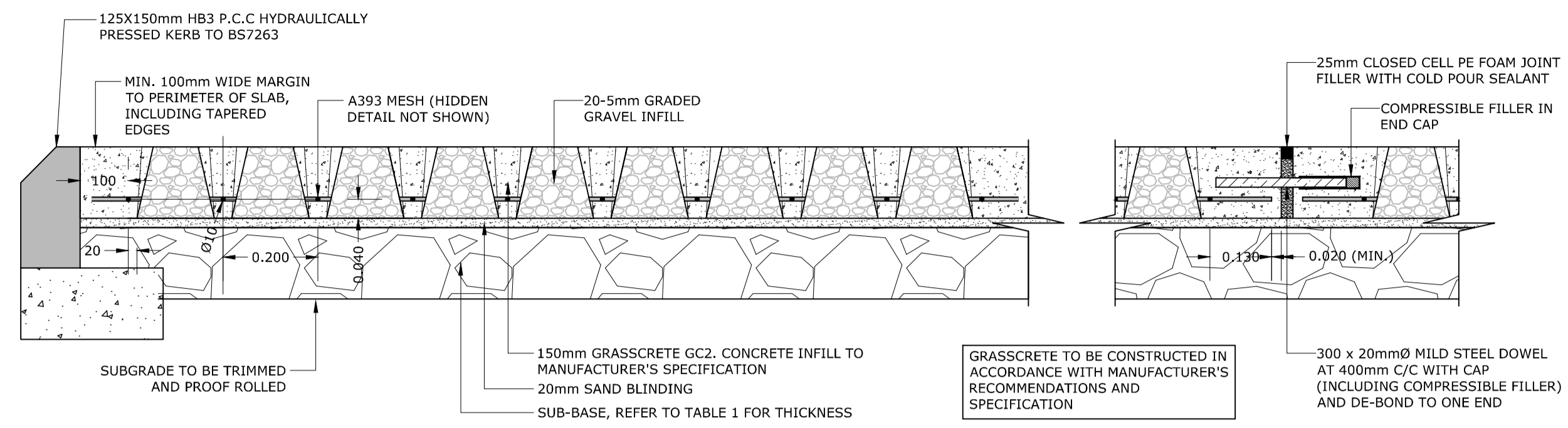
1. BS 1722 PART 3 SECTION 1 2 & 3 APPLY UNLESS OTHERWISE STATED.
2. DIMENSION OF FOUNDATION, TYPE AND SIZES OF POSTS AND STRUTS TAKEN FROM BS 1722 PART 3 AS APPROPRIATE TO THE HEIGHT AND PURPOSE OF THE FENCE.
3. ALL TIMBER SHALL COMPLY WITH SHW CLAUSE 304.

DETAILS OF NAME PLATE TO THE APPROVED DESIGN AS SPECIFIED BY THE DISTRICT COUNCIL



MIX ST2 INDIVIDUAL CONCRETE BASE FOR EACH POST, TO CLAUSE 2602 OF THE SPECIFICATION. THE EMBEDDED SECTION OF POST IS TO TREATED WITH 2 COATS OF ALKALI RESISTANT BITUMINOUS PAINT.

**STREET NAME PLATE DETAIL**  
NTS

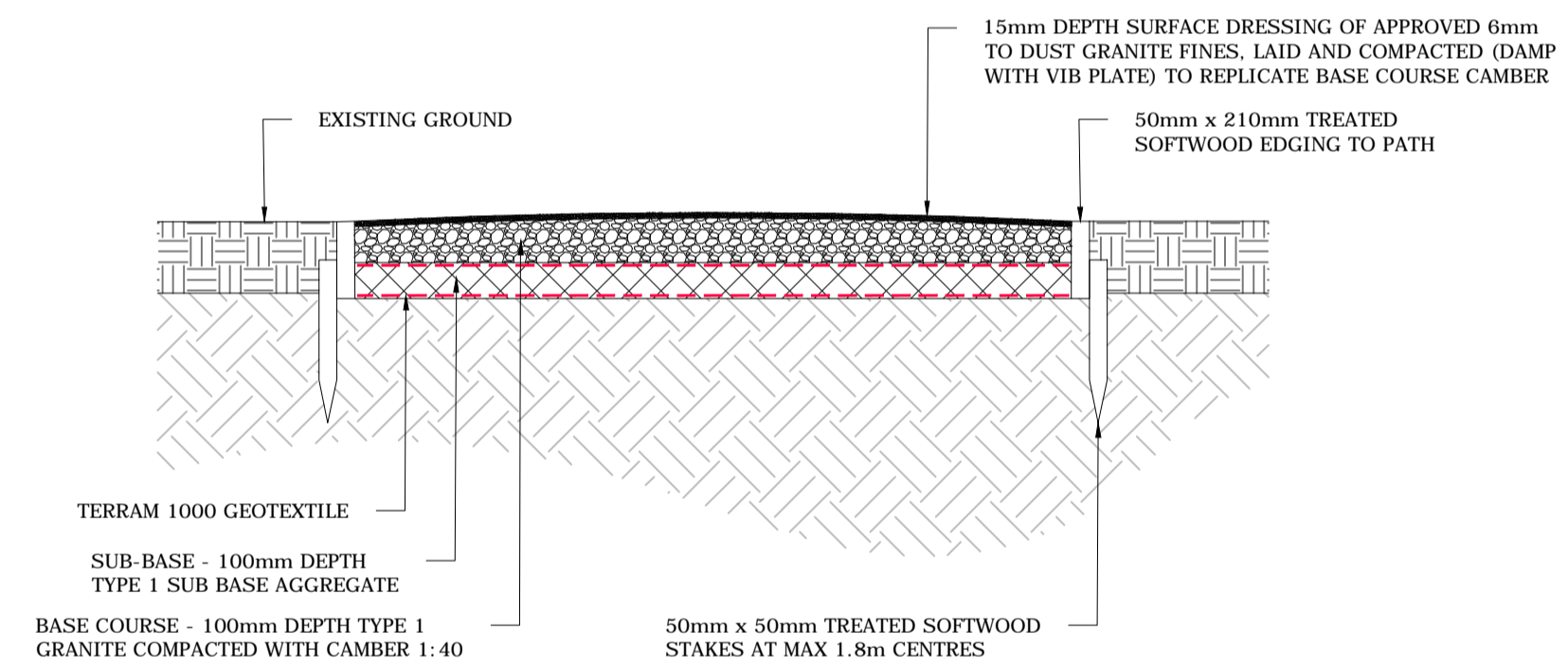


**MAINTENANCE VEHICLE LAY-BY/AGRICULTURAL ACCESS GRASSCRETE CONSTRUCTION DETAIL**  
1:10

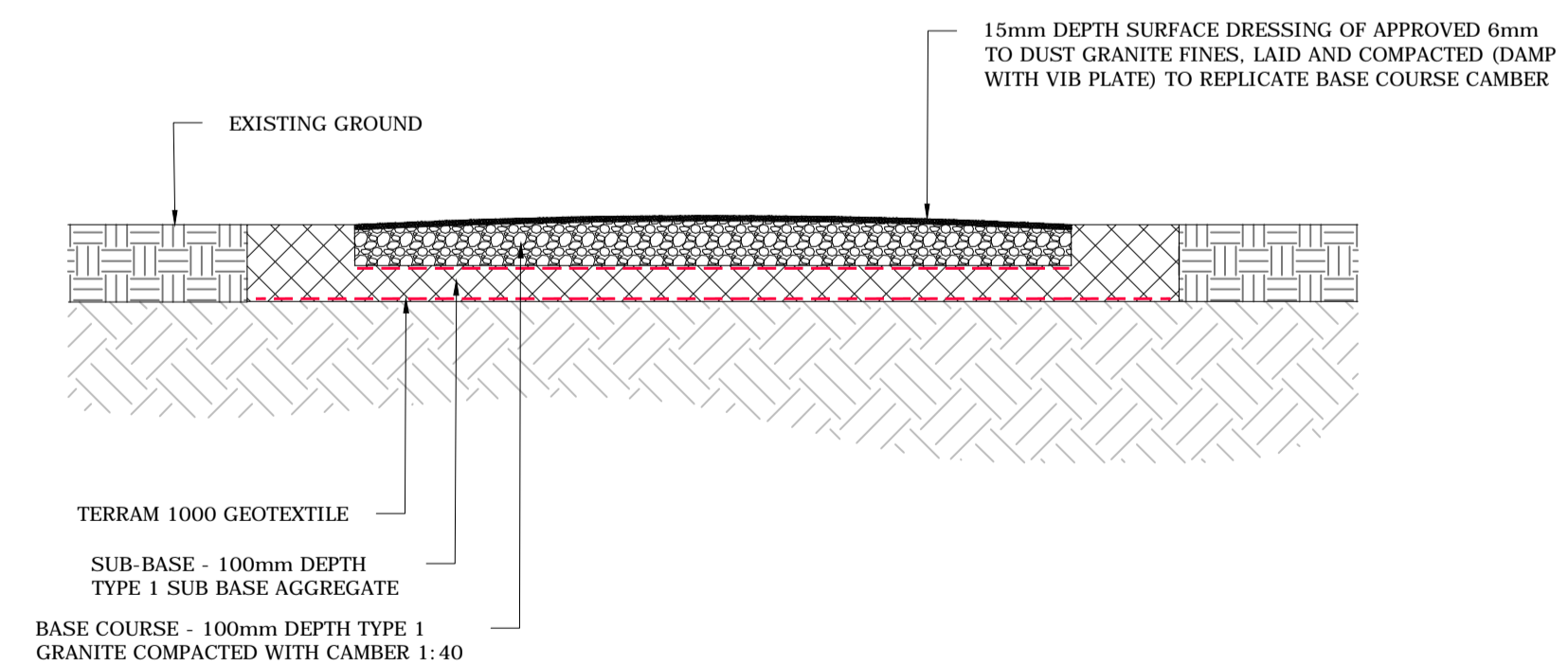
CBR (%)	SUB-BASE THICKNESS (mm)
2	380
3	300
4	220
5	180
>5	150

TABLE 1: SUB-BASE THICKNESS, TO BE COMPRISED OF MIN. 150mm TYPE 1 FILL MATERIAL, OVER EITHER TYPE 1 FILL MATERIAL OR 6F5 CAPPING MATERIAL

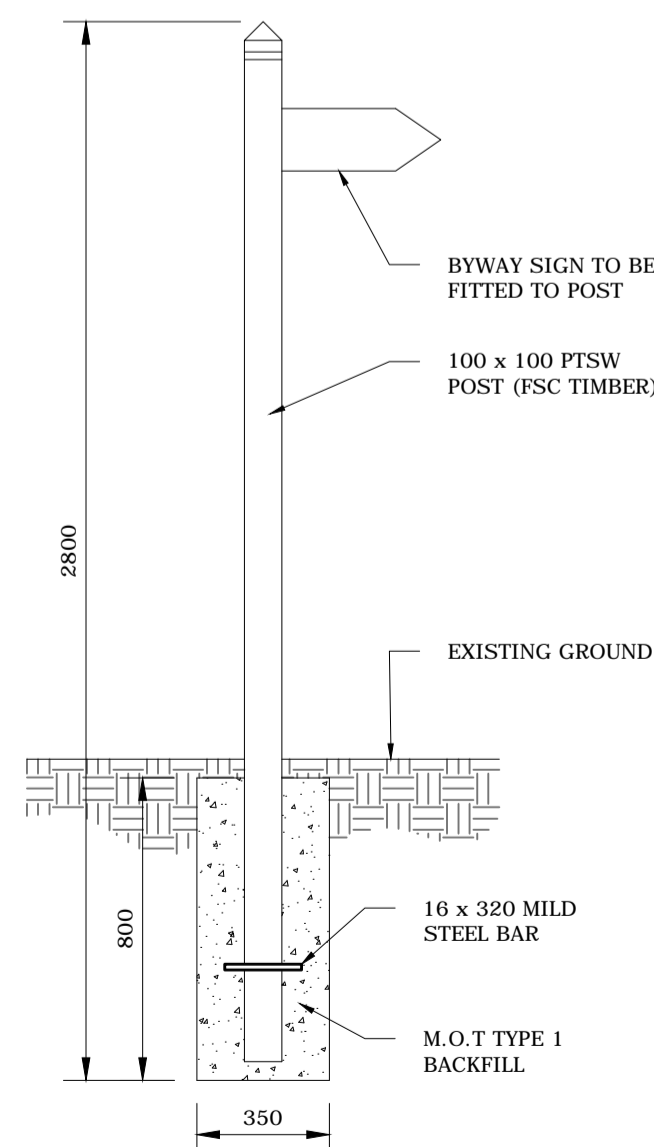
**EXPANSION JOINTS AT MAX 10.0m CC'S**  
1:10



**HOGGIN TRACK WITH TIMBER EDGING**  
1:20



**HOGGIN TRACK WITHOUT TIMBER EDGING**  
1:20



**TIMBER SIGN POST**  
1:20

**NOTES**

1. THIS DRAWING IS TO BE READ IN CONJUNCTION WITH ALL RELEVANT ENGINEERS, ARCHITECTS AND SPECIALISTS DRAWINGS AND THE SPECIFICATION.
2. DO NOT SCALE FROM THIS DRAWING MANUALLY OR ELECTRONICALLY. WRITTEN PERMISSION MUST BE OBTAINED FROM MLM PRIOR TO SCALING ELECTRONICALLY OR USING THIS ELECTRONIC FILE.
3. WHERE CBR < 2.5% IT IS CONSIDERED UNSUITABLE SUPPORT FOR A PAVEMENT FOUNDATION AND MUST BE PERMANENTLY IMPROVED. SEE IMPROVEMENTS BOX BELOW.
4. RESTRICTED FOUNDATION DESIGN IS INTENDED FOR USE WHERE IT IS INAPPROPRIATE TO CARRY OUT THE RANGE OF COMPLIANCE TESTING REQUIRED FOR PERFORMANCE RELATED SPECIFICATION FOR FOUNDATIONS (PRSF).
5. WHERE BOUND SUB-BASE MIXTURES ARE PERMITTED IN RESTRICTED FOUNDATION DESIGN THEY ARE RESTRICTED TO THOSE USING CEM1 AS THE PRIMARY BINDER.
6. CAPPING MATERIAL MAY COMPRISE 6F1, 6F2, 6F3, 6F4, 6F5 & 6S - ALL TO SPECIFICATION SERIES 600 OF THE MCHW.

**CONSTRUCTION (DESIGN AND MANAGEMENT) REGULATIONS 2015**

**DESIGNERS HAZARD INFORMATION FOR CONSTRUCTION**

1. IF YOU DO NOT FULLY UNDERSTAND THE RISKS INVOLVED DURING THE CONSTRUCTION OF THE ITEMS INDICATED ON THIS DRAWING ASK YOUR MANAGER, HEALTH & SAFETY ADVISOR OR A MEMBER OF THE DESIGN TEAM BEFORE PROCEEDING.
2. WORKS ADJACENT TO LIVE PUBLIC HIGHWAY.
3. DEEP EXCAVATIONS.
4. WORKING NEAR OPEN WATER.
5. EXISTING SERVICES.
6. DEEP DRAINAGE.

THE ABOVE NOTES REFER SPECIFICALLY TO THE INFORMATION SHOWN ON THIS DRAWING.  
REFER TO THE HEALTH AND SAFETY PLAN FOR FURTHER INFORMATION.

CO1	05.09.2022	ISSUED FOR CONSTRUCTION	TM	JRC	JRC
REV	DATE	REVISION	MADE	CHK	APP

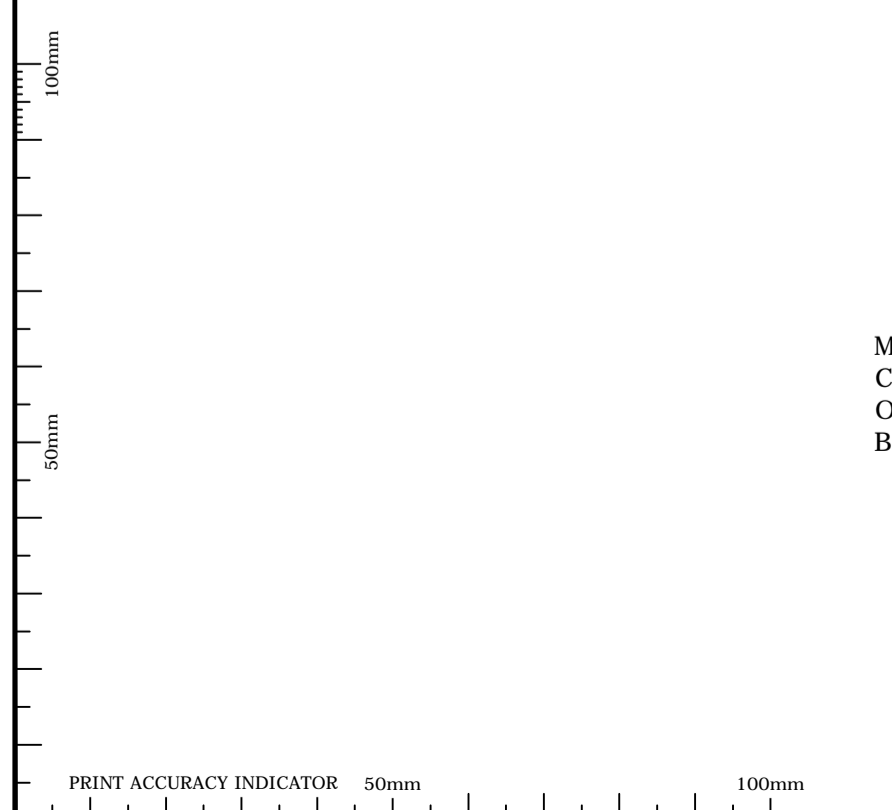
**CONSTRUCTION**

SUITABILITY DESCRIPTION

PROJECT  
**NORTHWEST HAVERHILL RELIEF ROAD**

DRAWING TITLE  
**HIGHWAY CONSTRUCTION DETAILS**

DRAWN/DESIGN	DS	MLM REF	STATUS	REVISION
SCALE	1:500 @A1	619132	-	CO1
PROJECT	ORIGINATOR	VOLUME/ SYSTEM	LEVELS & LOCATIONS	TYPE
619132-MLM-ZZ-XX-DR-C-0076				NUMBER



PRINT ACCURACY INDICATOR 50mm 100mm