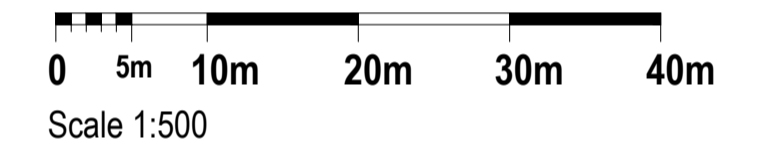


- Drainage Strategy Legend**
- Proposed adoptable Foul Water Sewer
 - - -○- - - Proposed adoptable Surface Water Sewer
 - - -□- - - Proposed adoptable Highway Drain
 - Proposed precast concrete headwall
 - Proposed pond



Rev	Description	Date	Drawn	Checked
B	Drainage strategy updated to suit Local Flood Authority comments	23.07.20	JMW	TJW
A	Minor updates to drainage strategy following layout changes	08.01.20	TJW	TJW

Drawing Approval Status:-
 Section 104 Section 38 Section 278

FOR INFORMATION

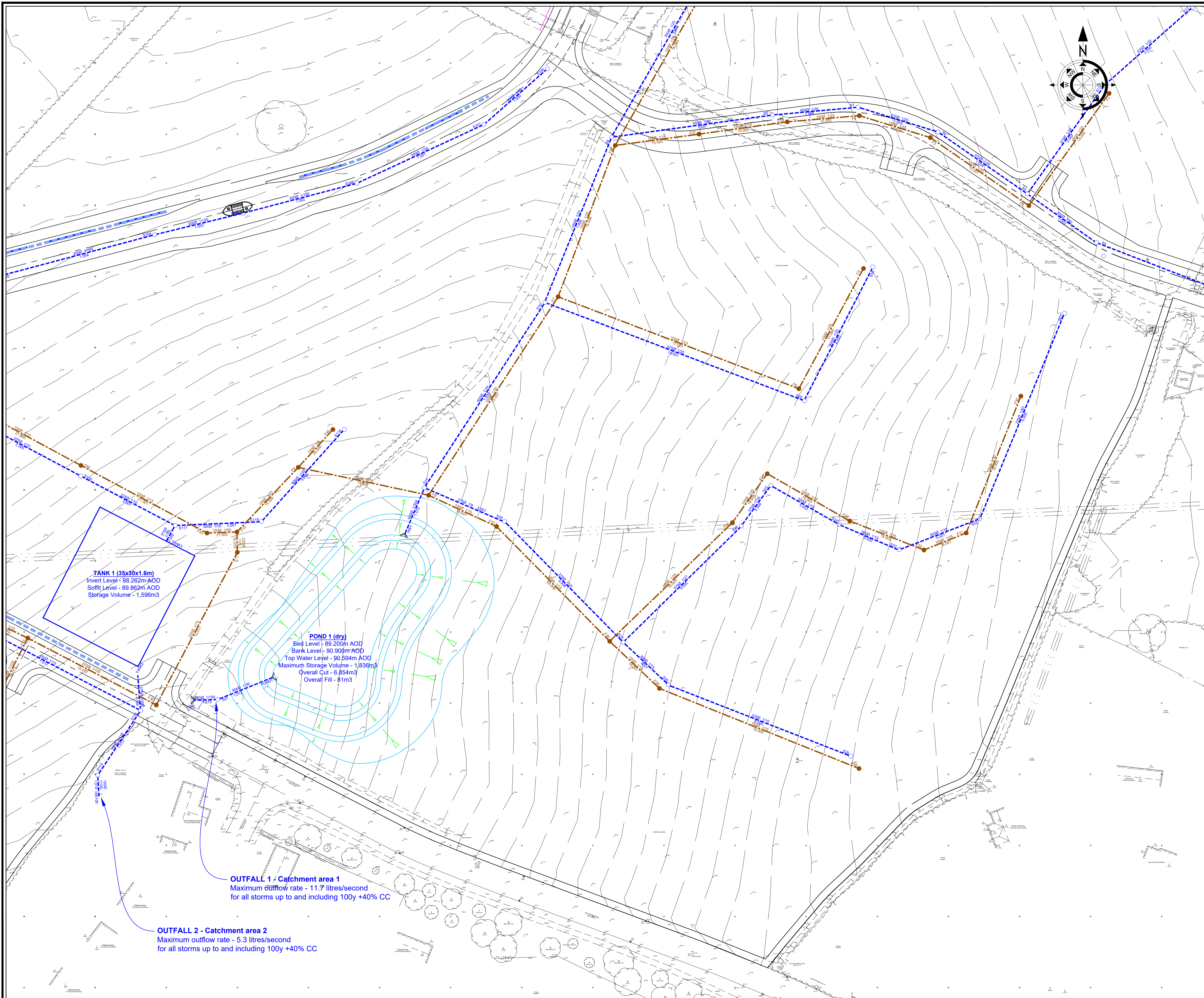
Wormald Burrows Partnership Ltd
 Civil Engineering Consultants
 12a - 18a Hitchin Street, Biggleswade, SG18 8AX
 Tel: (01767) 317244 Fax: (01767) 315434
 Web: www.wormburp.com
 Email: engineer@wormburp.com

Project:
Haverhill, Boyton Place - Phases 2-6

Drawing Description:
Drainage Strategy Plan - Sheet 2 of 8

Client: PERSIMMON Persimmon Homes (Suffolk) Ltd Orion Court Orion Court Great Blakenham Suffolk IP6 0LW	Drawing Number: E3838/502/B Client Reference: _____ Scale: 1:500 @ A1 1:1000 @ A3
--	--

Designed By: TJW Date: 20.12.18	Drawn By: JMW Date: 03.01.19	Checked By: _____ Date: _____
--	---------------------------------------	--



TANK 1 (35x30x1.6m)
 Invert Level - 88.262m AOD
 Soffit Level - 89.862m AOD
 Storage Volume - 1,596m³

POND 1 (dry)
 Bed Level - 89.200m AOD
 Bank Level - 90.900m AOD
 Top Water Level - 90.594m AOD
 Maximum Storage Volume - 1,836m³
 Overall Cut - 6,854m³
 Overall Fill - 81m³

OUTFALL 1 - Catchment area 1
 Maximum outflow rate - 11.7 litres/second
 for all storms up to and including 100y +40% CC

OUTFALL 2 - Catchment area 2
 Maximum outflow rate - 5.3 litres/second
 for all storms up to and including 100y +40% CC