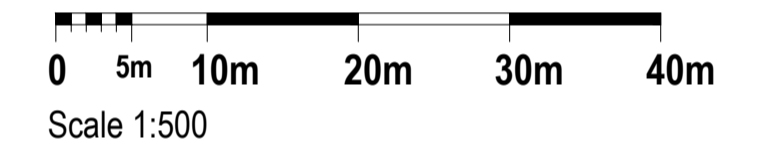


- Drainage Strategy Legend**
- Proposed adoptable Foul Water Sewer
 - Proposed adoptable Surface Water Sewer
 - Proposed adoptable Highway Drain
 - Proposed precast concrete headwall
 - Proposed pond



Rev	Description	Date	Drawn	Checked
A	Minor updates to drainage strategy following layout changes	08.01.20	TJW	TJW

Drawing Approval Status:-
 Section 104 Section 38 Section 278

FOR INFORMATION

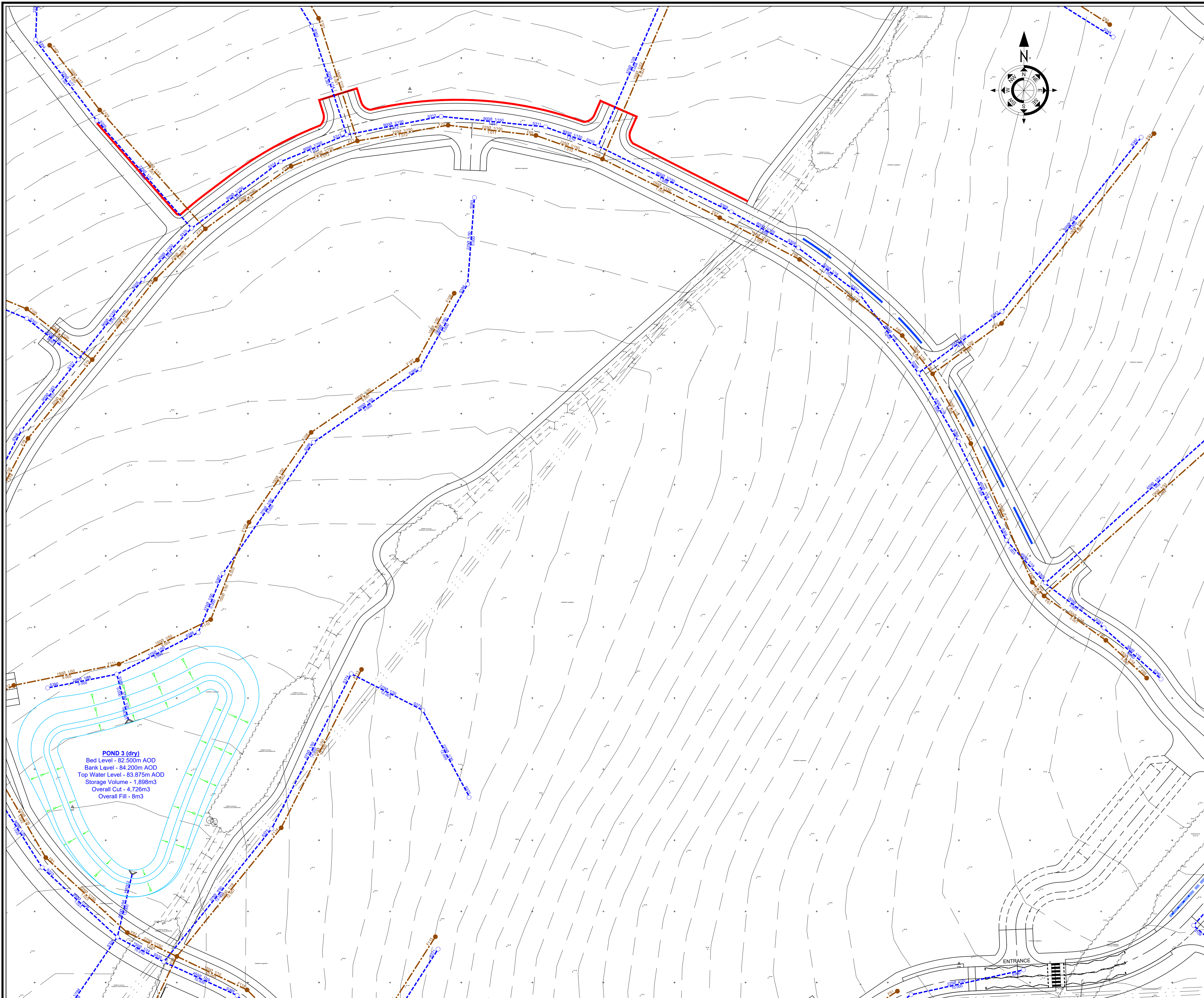
Wormald Burrows Partnership Ltd
 Civil Engineering Consultants
 12a - 18a Hitchin Street, Biggleswade, SG18 8AX
 Tel: (01767) 317244 Fax: (01767) 315434
 Web: www.wormburp.com
 Email: engineer@wormburp.com

Project:
Haverhill, Boyton Place - Phases 2-6

Drawing Description:
Drainage Strategy Plan - Sheet 6 of 8

Client: Persimmon Homes (Suffolk) Ltd Orion Court Great Blakenham Suffolk IP6 0LW	Drawing Number: E3838/506/A Client Reference: Scale: 1:500 @ A1 1:1000 @ A3
-----------------------------------------------------------------------------------------------	---------------------------------------------------------------------------------------------------

Designed By: TJW Date: 20.12.18	Drawn By: JMW Date: 03.01.19	Checked By: Date:
------------------------------------------	---------------------------------------	----------------------



POND 3 (dry)
 Bed Level - 82.500m AOD
 Bank Level - 84.200m AOD
 Top Water Level - 83.875m AOD
 Storage Volume - 1,898m³
 Overall Cut - 4,726m³
 Overall Fill - 8m³