

- SOFTWORKS**
- PROPOSED FEATHERED TREE, INCLUDING STAKE AND TIE. SEE SPECIFICATION NOTES A1, B2-3, B5, C1-4, D1-2 AND E1.
 - PROPOSED STANDARD TREE, INCLUDING DOUBLE STAKE AND TIE. SEE SPECIFICATION NOTES A1, B2-3, B5, C1-4, D1-2 AND E1.
 - PROPOSED HEAVY STANDARD TREE, INCLUDING DOUBLE STAKE AND TIE. SEE SPECIFICATION NOTES A1, B2-3, B5, C1-4, D1-2 AND E1.
 - PROPOSED EXTRA HEAVY STANDARD TREE, INCLUDING DOUBLE STAKE AND TIE. SEE SPECIFICATION NOTES A1, B2-3, B5, C1-4, D1-2 AND E1.
 - PROPOSED CONIFER OR BROAD LEAF EVERGREEN TREE, INCLUDING STAKE AND TIE. SEE SPECIFICATION NOTES A1, B2-3, B5, C1-4, D1-2 AND E1.
 - SHRUB AND HERBACEOUS PLANTING, INCLUDING BIODEGRADABLE SHEET AND BARK MULCH (ACCORDING TO SPECIFICATION). SEE SPECIFICATION NOTES A1-2, B1-3, C1-3, D1-2 AND E1.
 - GROUNDCOVER PLANTING IN MIXES, INCLUDING BIODEGRADABLE SHEET AND BARK MULCH (ACCORDING TO SPECIFICATION). SEE SPECIFICATION NOTES A1-2, B1-3, C1-3, D1-2 AND E1.
 - HEDGE PLANTING, INCLUDING BIODEGRADABLE SHEET AND BARK MULCH (ACCORDING TO SPECIFICATION), AND 3/2-STRAND WIRE AND TIMBER POST FENCE THROUGH CENTRE OF HEDGE. REFER TO HEDGE SCHEDULES ON PLAN AND THE SCHEDULE OF QUANTITIES. SEE SPECIFICATION NOTES A1-2, B1-3, B5, C1-3, D1-2 AND E1.
 - REPLACEMENT HEDGES, INCLUDING BIODEGRADABLE SHEET AND BARK MULCH (ACCORDING TO SPECIFICATION) AND 3/2-STRAND WIRE AND TIMBER POST FENCE THROUGH CENTRE OF HEDGE. REFER TO HEDGE SCHEDULES ON PLAN AND THE SCHEDULE OF QUANTITIES. SEE SPECIFICATION NOTES 1.1-1.2, 2.1-2.3, 3.1-3.3, 4.1-4.2 AND 5.1.
 - PLAY AREA AMENITY GRASS MIX AREA UNLESS OTHERWISE STATED ON PLAN. SEE SPECIFICATION NOTES B4, C5 AND E1.
 - SSC HIGHWAYS MIX FOR THE EDGE OF HIGHWAYS, UNLESS OTHERWISE STATED ON PLAN. SEE SPECIFICATION NOTES B4, C5 AND E1.
 - FLORAL LAWN, UNLESS OTHERWISE STATED ON PLAN. SEE SPECIFICATION NOTES B4, C5 AND E1.
 - WILDFLOWER SEEDED AREA. REFER TO PLANT SCHEDULE FOR SPECIFICATION OF MIX.
 - WILDFLOWER SEEDED AREA. REFER TO PLANT SCHEDULE FOR SPECIFICATION OF MIX.
 - BULB PLANTING IN MIXES, SPRING FLOWERING VARIETIES. REFER TO SCHEDULE FOR FURTHER INFORMATION.
 - EXISTING TREE TO BE RETAINED. SEE GENERAL NOTE A1 AND E1. IF PREPARED, SEE ALSO JAMES BLAKE ASSOCIATES PLAN AND SCHEDULE FOR ANY SURGERY WORKS.
 - EXISTING VEGETATION GROUP OR HEDGE TO BE RETAINED. SEE GENERAL NOTE A1 AND E1. IF PREPARED, SEE ALSO JAMES BLAKE ASSOCIATES PLAN AND SCHEDULE FOR ANY SURGERY WORKS.
 - AREA OF EXISTING GROUND FLORA TO BE RETAINED AND MAINTAINED.

- HARDWORKS**
- SAWN SOFTWOOD TIMBER POST WITH METAL RAIL, post to be 450mm high. To be ACO or Tarmolin treated and stained with 2no. Coats of Sadelin Classic Colour 'Jacobean Walnut' with removable rail for maintenance.
 - TURF REINFORCEMENT MESH (Turfmesh - Turfguard 3, available from Geosynthetics Limited, Tel: 01455 617 139. With removable knee rail where required as above.
 - ROADWAYS AND FOOTPATHS to be Bitumen Macadam with 6mm gauge aggregate wearing course to be laid over 20mm gauge aggregate base course, all laid over base course of hardcore, all depths to Engineer's specification, laid over firm sub-grade and geotextile - Teram 1000, all to falls and crossfalls, minimum 1/70 and all to Highway's Authority approval.
 - PRECAST CONCRETE BLOCK EDGING, 50 x 150 x 90mm, flat topped and laid flush with paving. Edging to be bedded into C20/P in situ concrete strip foundation 350 x 300mm, haunched. SNo. ATOMIX BENCH 1600mm x 600mm, 1000mm high above ground level. Available from Miracle Play, Tel 01604658240 or similar and approved.
 - 3m No. TIMBER LITTLE BIN (40L) 430mm x 430mm, 40 Litre capacity. Available from Miracle Play, Tel 01604658240 or similar and approved.
 - 2m No. SPRINX PICNIC TABLE 1850mm x 1610 x 800mm. Available from Miracle Play, Tel 01604658240 or similar and approved.
 - LOCKABLE GATES. AVAILABLE FROM MIRACLE PLAY, TEL 01604658240 OR SIMILAR AND APPROVED.
 - HOGGIN WITH TIMBER EDGES
 - CONVEYANCE LINE FOR RELIEF ROAD
 - BOUNDARY LINES TO INDIVIDUAL LAND PARCELS AND PHASES
 - EASEMENT SEE ENGINEERS PLAN FOR MORE DETAIL.
 - PLAY EQUIPMENT. AVAILABLE FROM MIRACLE PLAY, TEL 01604658240 OR SIMILAR AND APPROVED.
 - WET POUR SAFETY SURFACING. AVAILABLE FROM MIRACLE PLAY, TEL 01604658240 OR SIMILAR AND APPROVED.
 - 1M HIGH BOWTOP FENCING. GALVANISED. AVAILABLE FROM MIRACLE PLAY, TEL 01604658240 OR SIMILAR AND APPROVED.
 - 1.2M HIGH POST AND RAIL FENCE. AVAILABLE FROM JACKSON'S FENCING, TEL 01233 750 393 OR SIMILAR AND APPROVED.
 - 3M HIGH BALL STOP NETTING. TO BE A WELD MESH FENCE SUITABLE FOR AROUND MUGA.
 - 1.8M HIGH WELD MESH FENCE. WITH MATCHING GATES AROUND ALLOTMENTS. AVAILABLE FROM JACKSON'S FENCING, TEL 01233 750 393 OR SIMILAR AND APPROVED.
 - BOULDERS. FALLEN LOGS AND STEERING LOGS. AVAILABLE FROM MIRACLE PLAY, TEL 01604658240 OR SIMILAR AND APPROVED.
 - MOUNDS (CONTOURS AT 0.15M INTERVALS)
 - ROOT BARRIERS. AVAILABLE FROM GREENBLUE URBAN, TEL: 01580 830 800.

NOTE
SEE DRAWING JBA 18/351-29 FOR PLANTING SCHEDULE AND DRAWING LOCATION PLAN
NOTE
SEE SEPARATE EXTERNAL LAYOUT DRAWINGS (BY DEVELOPER) FOR SPECIFICATIONS AND ARRANGEMENT OF FENCING AND OTHER HARD WORKS

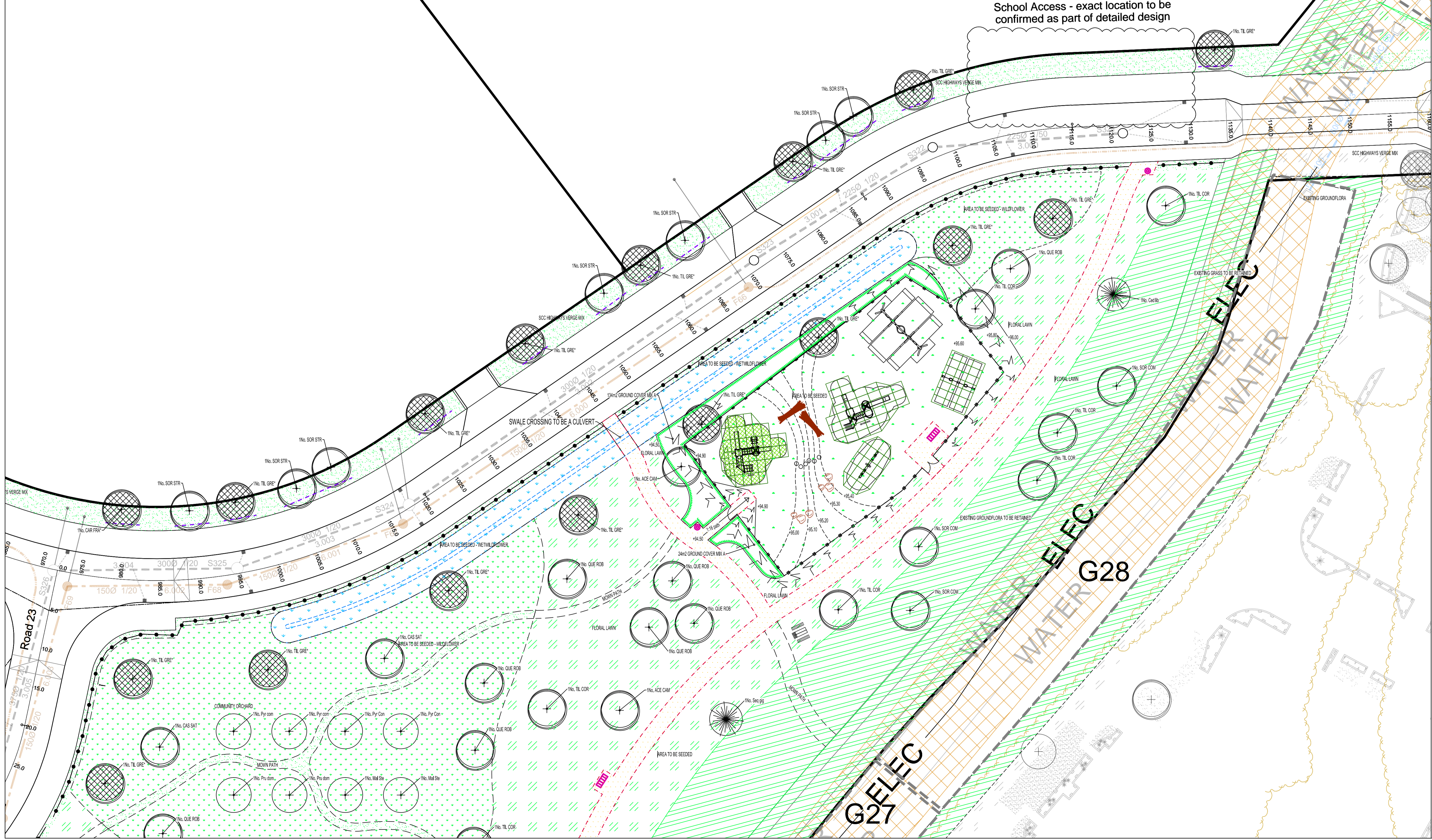
NO.	DATE	BY	CHKD	REVISED	REASON
01	01/02/20	JBA	JBA		ISSUED TO UPA COMMENTS RECEIVED 28/02/20
02	02/02/20	JBA	JBA		ISSUED TO UPA COMMENTS AND NEW LAYOUT RECEIVED 03/02/20
03	25/02/20	JBA	JBA		ISSUED TO UPA COMMENTS AND NEW LAYOUT RECEIVED 18/02/20
04	24/02/20	JBA	JBA		ISSUED TO UPA COMMENTS AND NEW LAYOUT RECEIVED 18/02/20
05	18/02/20	JBA	JBA		ISSUED TO UPA COMMENTS AND NEW LAYOUT RECEIVED 18/02/20
06	09/02/20	JBA	JBA		ISSUED TO UPA COMMENTS AND NEW LAYOUT RECEIVED 18/02/20
07	28/02/20	JBA	JBA		ISSUED TO UPA COMMENTS AND NEW LAYOUT RECEIVED 18/02/20
08	10/02/20	JBA	JBA		ISSUED TO UPA COMMENTS AND NEW LAYOUT RECEIVED 18/02/20
09	03/02/20	JBA	JBA		ISSUED TO UPA COMMENTS AND NEW LAYOUT RECEIVED 18/02/20
10	16/02/20	JBA	JBA		ISSUED TO UPA COMMENTS AND NEW LAYOUT RECEIVED 18/02/20
11	20/01/20	JBA	JBA		ISSUED TO UPA COMMENTS AND NEW LAYOUT RECEIVED 22/01/20

CLIENT	PERMISSION HOMES SUFFOLK	DWG. TITLE	DETAILED HARD AND SOFT LANDSCAPE PROPOSALS FOR POS AREA 5
SITE	WIMBORNE PHASE 14	PURPOSE OF ISSUE	PLANNING
CRG BY	JBA	AUTHD	JBA
CR	JBA	SCALE	1:2500 A1
DATE	JANUARY 2020	DWG. NO.	JBA 18/351-05
REV.	M		

JAMES BLAKE ASSOCIATES

The Black Barn, Hill Road, Lavenham, Suffolk, CO10 9DX
Tel: (01787) 248216 Fax: (01787) 247284
james@jamesblakeandpartners.com www.jamesblakeandpartners.com

LANDSCAPE ARCHITECTURE • ARBORICULTURE • ECOLOGY



Caroline Rust - 26/05/2019 - K:\JBA\Client Projects\Perambon Homes_Suffolk\SUUFFolk_Haverhill\Phases 6-8_18-20\Drawings\JBA\Master\JBA_18-20_Detailed Hard and Soft Landscape Proposals For POS_SUDS_rev 04.dwg