

EMPIRE YARD  
BROOK SERVICE RD, HAVERHILL

TRANSPORT & PARKING PRINCIPLES

---

05/06/2024

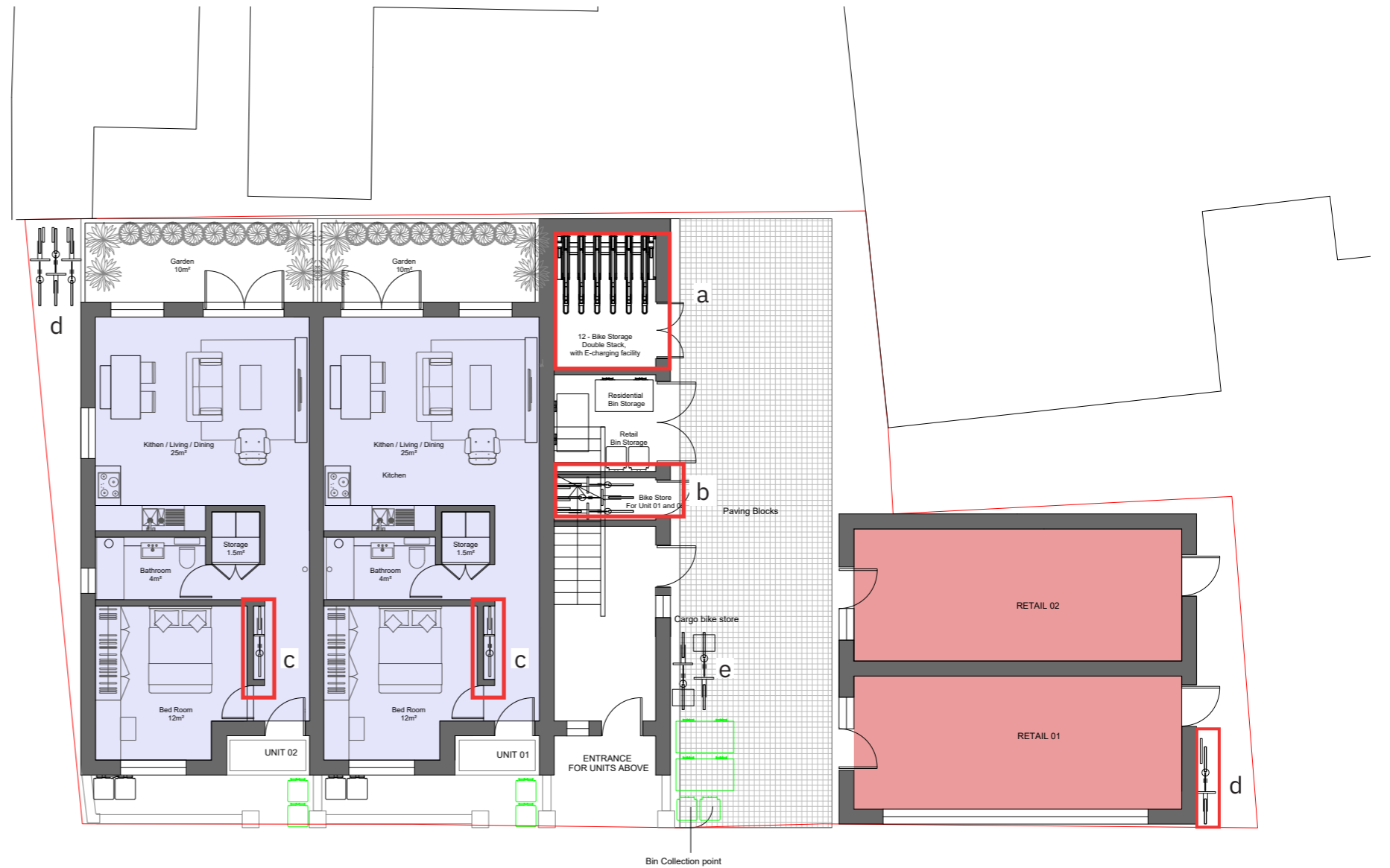
# Sustainable transport Strategy

## Bike Storage -

The proposal is located in an urban area where there is good provision of public transport links and local services available within a reasonable walking distance, hence the proposal seeking the parking requirement to be relaxed. As an alternative solution the developments is designed to provide sustainable means of transport, which would include:

- a. 12 x secured bike storage, with e-charging facility.
- b. 3 x bike storage for the ground floor units 01 and 02.
- c. 2 internal bike storage for the ground floor units 01 and 02.
- d. 4 bike bike storage for retail use
- e. 2 cargo bike storage.

TOTAL: 23 bike storage.



## Car Parking-

Additionally the Applicant is in conversation with the local private / public car parking space to secure permit for potential future residents at the development should the require.

