


DISCLAIMER NOTES:

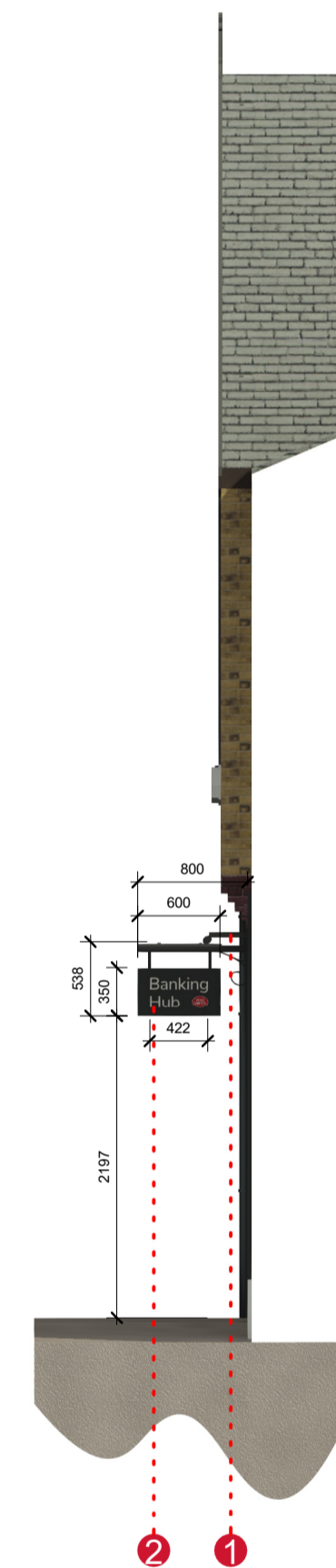
- THIS DOCUMENT IS COPYRIGHT OF THE ORIGINATOR AND MUST BE TREATED AS CONFIDENTIAL.
- THIS DOCUMENT MUST NOT BE ALTERED, REPRODUCED OR DISTRIBUTED WITHOUT PRIOR WRITTEN CONSENT OF THE ORIGINATOR.
- THIS DOCUMENT MUST NOT BE ALTERED - THE ORIGINATOR ACCEPTS NO RESPONSIBILITY FOR ANY DISCREPANCIES ARISING AS A RESULT OF THE ORIGINATOR'S INFORMATION BEING ALTERED BY OTHERS.
- ANY DISCREPANCY MUST BE REPORTED TO THE ORIGINATOR.
- DO NOT SCALE THIS DOCUMENT - USE FIGURED DIMENSIONS ONLY.
- ALL DIMENSIONS MUST BE CHECKED ON SITE PRIOR TO COMMENCEMENT OF ANY RELATED WORKS.
- THIS DOCUMENT MUST BE READ IN CONJUNCTION WITH ALL SUPPORTING DOCUMENTS PRODUCED BY THE ORIGINATOR AND OTHER PROJECT DISCIPLINES.
- THE ORIGINATOR ACCEPTS NO RESPONSIBILITY FOR THE ACCURACY OF BACKGROUND INFORMATION PRODUCED BY THIRD PARTIES - THIS MUST BE TREATED AS INDICATIVE ONLY.
- USERS OF THIS DOCUMENT ARE RESPONSIBLE FOR CHECKING WHICH REVISION IS CURRENT.
- THE DOCUMENT STATUS "INFORMATION" OR "PRELIMINARY", INDICATES THAT THIS DRAWING IS FOR REFERENCE PURPOSES ONLY - THE ORIGINATOR WILL ACCEPT NO RESPONSIBILITY FOR THE COMPLETENESS OF INFORMATION UNDER THIS STATUS.
- THE DOCUMENT STATUS "RECORD" OR "AS BUILT" HAS BEEN PREPARED, IN PART, BASED UPON INFORMATION FURNISHED BY OTHERS. WHILE THIS INFORMATION IS BELIEVED TO BE RELIABLE, THE ORIGINATOR ASSUMES NO RESPONSIBILITY FOR THE ACCURACY OF THIS "RECORD" OR "AS BUILT" DOCUMENT OR FOR ANY ERRORS OR OMISSIONS THAT MAY HAVE BEEN INCORPORATED INTO IT AS A RESULT OF INCORRECT INFORMATION PROVIDED TO THE ORIGINATOR. THOSE RELYING ON THE "RECORD" OR "AS BUILT" DOCUMENT ARE ADVISED TO OBTAIN INDEPENDENT VERIFICATION OF ITS ACCURACY.

DRAWING NOTES:

- CDM REGULATIONS 2015
SIGNIFICANT OR NON-OBVIOUS RISKS AND RISKS WHICH ARE DIFFICULT TO MANAGE ARE IDENTIFIED ON THIS DRAWING USING THE FOLLOWING SYMBOL IDENTIFIED TO THE RIGHT WITH BRIEF ACCOMPANYING TEXT. FOR FURTHER DETAILS OF THE RISKS IDENTIFIED BY DESIGNERS, REFERENCE SHOULD BE MADE TO CDM HAZARD REGISTER. 



Elevation 1 - Front
1 : 50

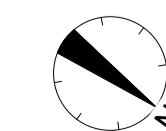
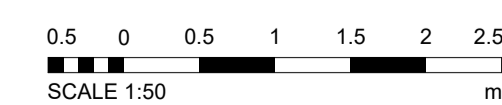


Elevation 2 - Side
1 : 50

Key

- Illuminated Heritage Brand Fascia**
*Externally illuminated - Trough light situated over Banking Hub logo
Painted to Match RAL 7021, with applied cut-out lettering*
Fabricator to ensure compliance with 'Design Guide v5.0 Fascia Sign'
- Illuminated Projecting Sign Positioned to the Side of Fascia**
*externally illuminated - Flat Panel on heritage bracket with trough light
Painted to Match RAL 7021, with Vinyl lettering*
Fabricator to ensure compliance with 'Design Guide v5.0 Projecting Sign'
- Suspended Illuminated Directory of Services and Bank Availability Poster**
Suspended Lightbox for A1 Poster. Metal Frame to match RAL 7021, Changeable Graphics, Tension Cables.
- Illuminated Marketing Poster**
*Paper insert(s) in an acrylic holder with suction cups.
Double-sided with Goodbye Messaging and QR Code Message on the back*
- Opening Hours Sign - A4**
Double-sided with Goodbye Messaging and QR Code Message on the back
- CCTV Sign**
*Double sided vinyl sign to be applied to the internal face of the entrance door/window glazing.
Signage fabricator to ensure compliance with Design Guide v5.0*
- Community and Ownership Messages (Vinyl)**
*Vinyl Lettering Placed Externally onto Glazing.
White - when lettering is placed directly onto glazing.
Grey - when lettering is placed onto frosted surface.*

Please refer to Notes on Drawings to identify Site Specific Community Message Vinyl.



P01	Planning - First Issue	25/07/2024	HK	JP
REV	DESCRIPTION	DATE	BY	CHKD

ORIGINATOR:



TOWER WHARF
CHEESE LANE
BRISTOL
BS2 0JJ
WWW.RIDGE.CO.UK
TEL NO: 0117 244 2500

CLIENT:



IN ASSOCIATION WITH:



PROJECT:
Unit 1, The Chantry Centre, High Street, Haverhill, CB98AA, UK

TITLE:
Planning - Proposed Elevations & Advertisement Copy 1

DRAWN BY: JD SCALE: 1 : 50 @ A1
CHECKED BY: JF DATE: 08/04/2024

STATUS:
S5 - Suitable for Review & Acceptance

PROJECT:	ORG:	ZONE:	LEVEL:	TYPE:	ROLE:	NUMBER:	REV:
7300	RDG	XX	ZZ	D	A	7362	P01