



INDICATIVE SOFT AND HARD WORKS SCHEDULES

PLANTING SCHEDULE

Whilst respecting and working in harmony with the existing landscape fabric the scheme provides a variety of functional external spaces for residents to use and enjoy.

To the front of the site formal tree avenues will ensure the replacement of trees removed due to their condition or to facilitate development.

The texture of the proposed grassland will add to the intrinsic qualities of the space, compared to an over manicured amenity space that is common place in care homes.

The following planting palettes set out an intended approach to structural and amenity planting in order to create a functional and pleasant outdoor space that caters for residents, protects and enhances retains features and brings diversity of habitat at every opportunity.

Table with columns for species name, height, and quantity. Includes Hedgerow Mix, Single Species Hedgerows, and Car Park Trees.

Table with columns for species name, height, and quantity. Includes Avenue Trees, Feature Trees, and Garden Trees.

Table with columns for species name, height, and quantity. Includes Orchard Trees, Trellis Climbing Plants, and Rain Gardens.

Table with columns for species name, height, and quantity. Includes Scrub Tree Mix, Grass Mixes, and Hardworks Specification.

Table with columns for species name, height, and quantity. Includes Hedgerow Mix, Single Species Hedgerows, and Car Park Trees.

Table with columns for species name, height, and quantity. Includes Avenue Trees, Feature Trees, and Garden Trees.

Table with columns for species name, height, and quantity. Includes Orchard Trees, Trellis Climbing Plants, and Rain Gardens.

Table with columns for species name, height, and quantity. Includes Scrub Tree Mix, Grass Mixes, and Hardworks Specification.

Table with columns for species name, height, and quantity. Includes Hedgerow Mix, Single Species Hedgerows, and Car Park Trees.

Table with columns for species name, height, and quantity. Includes Avenue Trees, Feature Trees, and Garden Trees.

Table with columns for species name, height, and quantity. Includes Orchard Trees, Trellis Climbing Plants, and Rain Gardens.

Table with columns for species name, height, and quantity. Includes Scrub Tree Mix, Grass Mixes, and Hardworks Specification.

Table with columns for species name, height, and quantity. Includes Hedgerow Mix, Single Species Hedgerows, and Car Park Trees.

Table with columns for species name, height, and quantity. Includes Avenue Trees, Feature Trees, and Garden Trees.

Table with columns for species name, height, and quantity. Includes Orchard Trees, Trellis Climbing Plants, and Rain Gardens.

Table with columns for species name, height, and quantity. Includes Scrub Tree Mix, Grass Mixes, and Hardworks Specification.

Table with columns for species name, height, and quantity. Includes Hedgerow Mix, Single Species Hedgerows, and Car Park Trees.

Table with columns for species name, height, and quantity. Includes Avenue Trees, Feature Trees, and Garden Trees.

Table with columns for species name, height, and quantity. Includes Orchard Trees, Trellis Climbing Plants, and Rain Gardens.

Table with columns for species name, height, and quantity. Includes Scrub Tree Mix, Grass Mixes, and Hardworks Specification.

PLANTING MIXES

Car Park Planting Where planting is indicated within the car park area the following species will be planted to provide a level of screening and softening of views to the car park.

Terrace Planting To be planted in single species groups or lines to create structural planting blocks in the terrace planting beds.

Garden Planting A number of planting beds are situated within the garden. There intentions is to bring seasonal interest and vibrancy to the garden throughout the year.

Sensory Planting In and around the seating and stopping areas sensory planting should be included to provide an additional layers of interest to the garden.

Trellis Climbing Plants The following plants are an example of different climbing species that could be implemented on both the trellis tunnels and pergolas of the hanging roof garden.

Rain Gardens A variety of plants suitable for use in a rain garden are set out below, their density, percentage mix, location and configuration should be adapted according to the level of water they are likely to experience.

Biodiverse Green Roof The adjacent grass mix is proposed to be sown on the two areas of biodiverse green roofs that are proposed as a part of the scheme.

The mix includes a highly diverse seed mix developed for biodiverse green roofs in urban and countryside environments.

Soil and substrate are to be provided by others. The mix includes a highly diverse seed mix developed for biodiverse green roofs in urban and countryside environments.

Soil and substrate are to be provided by others. The mix includes a highly diverse seed mix developed for biodiverse green roofs in urban and countryside environments.

Soil and substrate are to be provided by others. The mix includes a highly diverse seed mix developed for biodiverse green roofs in urban and countryside environments.

Soil and substrate are to be provided by others. The mix includes a highly diverse seed mix developed for biodiverse green roofs in urban and countryside environments.

Soil and substrate are to be provided by others. The mix includes a highly diverse seed mix developed for biodiverse green roofs in urban and countryside environments.

Soil and substrate are to be provided by others. The mix includes a highly diverse seed mix developed for biodiverse green roofs in urban and countryside environments.

Soil and substrate are to be provided by others. The mix includes a highly diverse seed mix developed for biodiverse green roofs in urban and countryside environments.

Soil and substrate are to be provided by others. The mix includes a highly diverse seed mix developed for biodiverse green roofs in urban and countryside environments.

Soil and substrate are to be provided by others. The mix includes a highly diverse seed mix developed for biodiverse green roofs in urban and countryside environments.

NOTES This drawing is the property of FPCR Environment and Design Ltd and is issued on the condition it is not reproduced, retained or disclosed to any unauthorised person, either wholly or in part without written consent of FPCR Environment and Design Ltd.

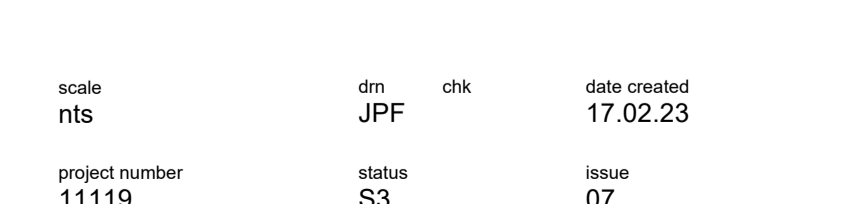
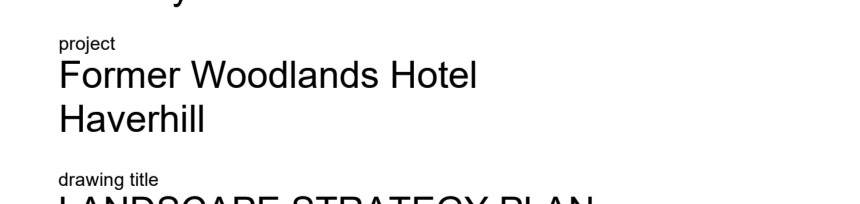
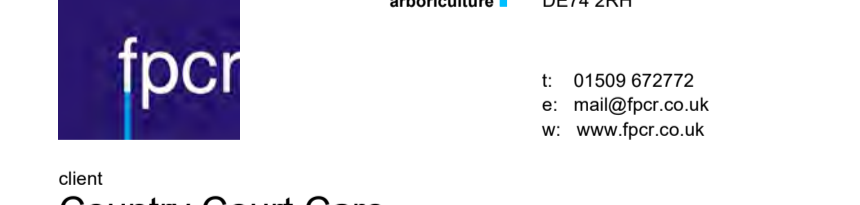
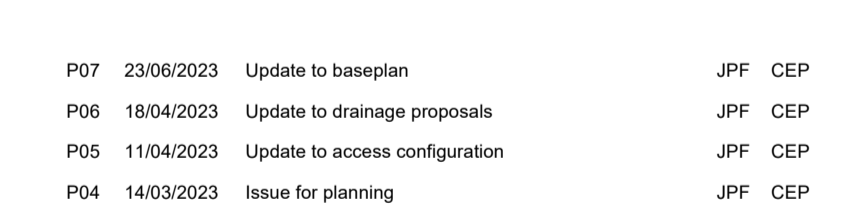
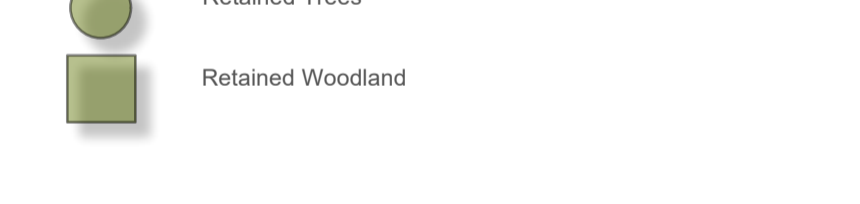
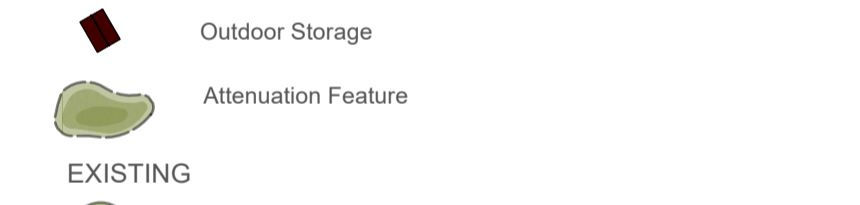
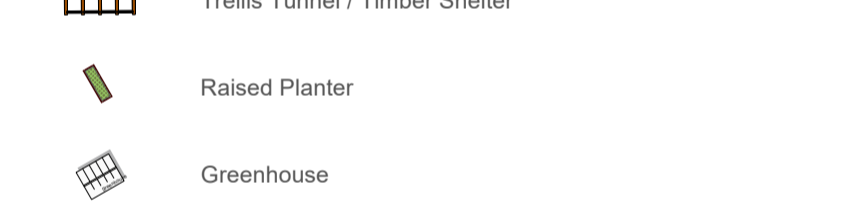
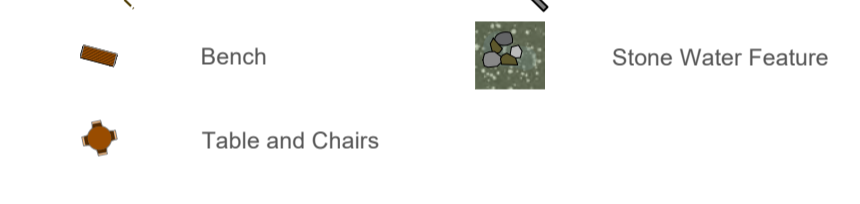
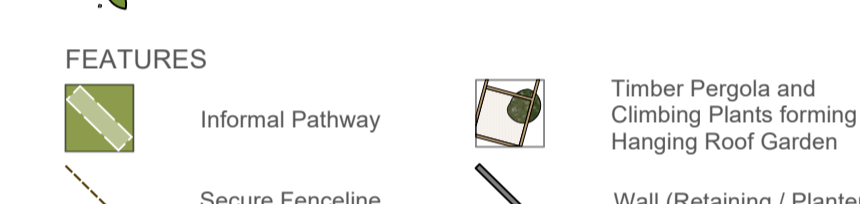
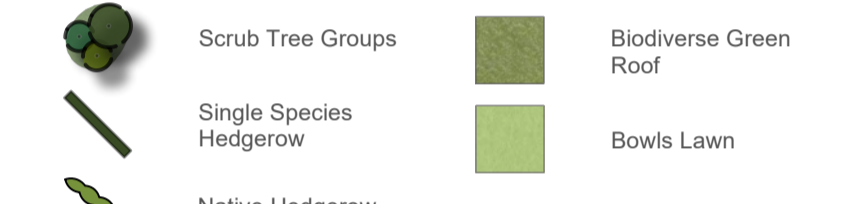
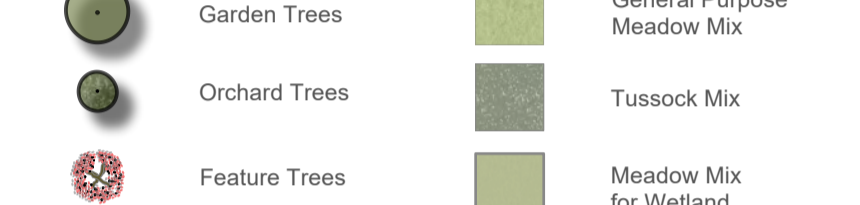
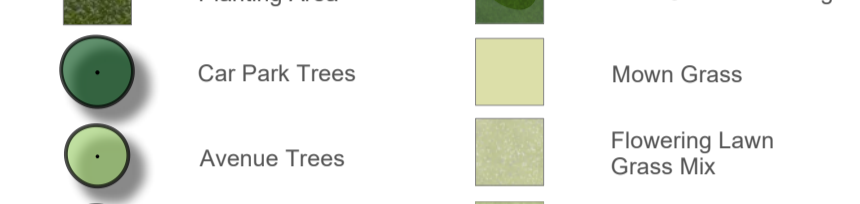
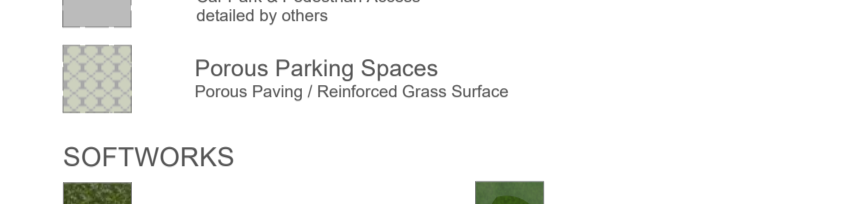
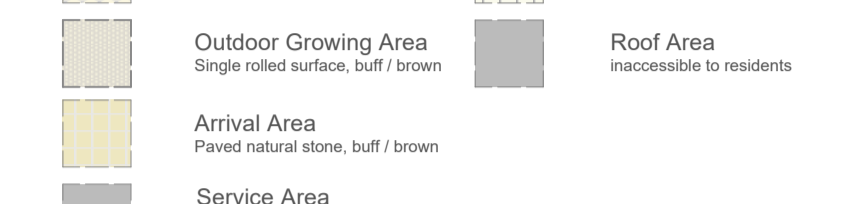
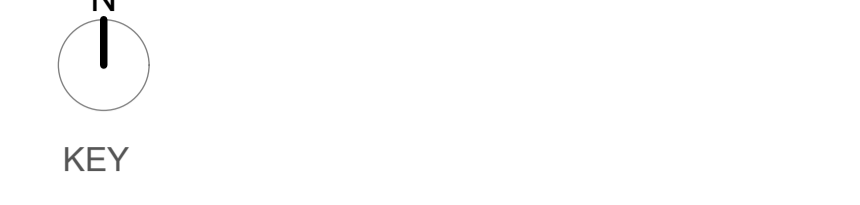


Table with columns for rev, date, description, and initials. Includes updates to baseplan, drainage proposals, access configuration, and planning.



Table with columns for scale, nts, dm, chk, date created, project number, status, issue, and document number.

11119-FPCR-XX-XX-DR-L-0003

File: \\FPCR-FS1-Projects\21110011119\LANDS\Drawings\11119-FPCR-XX-XX-DR-L-0003-P07-Landscape Strategy