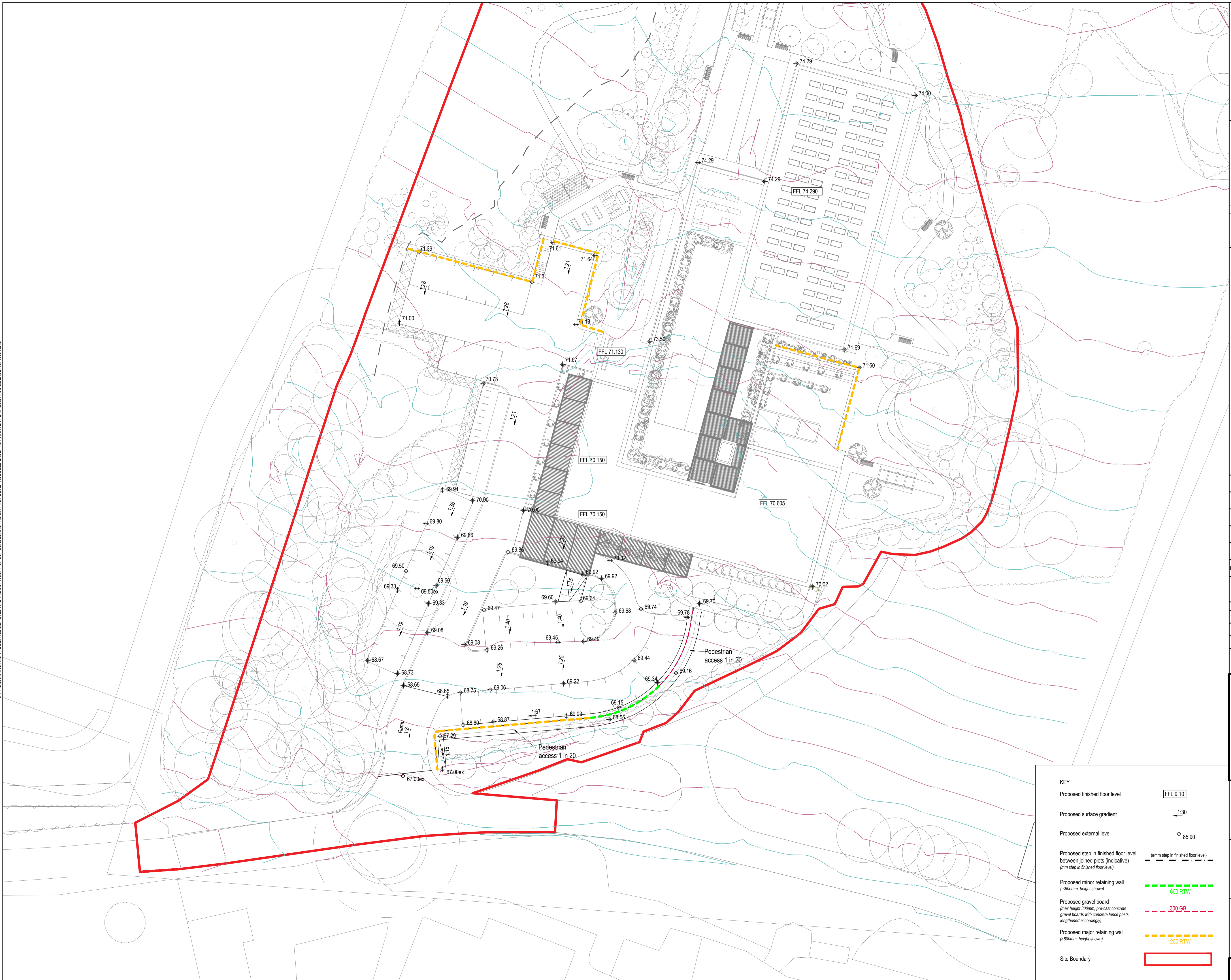


© THIS DRAWING AND THE DETAILS DEPICTED ARE THE COPYRIGHT OF BSP CONSULTING AND MAY NOT BE REPRODUCED EXCEPT BY WRITTEN PERMISSION. OS LICENCE NO. 10041472



| KEY  |                                    |
|--|------------------------------------|
| Proposed finished floor level  | FFL 9.10                           |
| Proposed surface gradient  | 1:30                               |
| Proposed external level  | ± 85.90                            |
| Proposed step in finished floor level between joined plots (indicative) (mm step in finished floor level)                  | (#mm step in finished floor level) |
| Proposed minor retaining wall (<600mm, height shown)   | 600 RTW                            |
| Proposed gravel board (max height 300mm, pre-cast concrete gravel boards with concrete fence posts lengthened accordingly) | 300 GB                             |
| Proposed major retaining wall (>600mm, height shown)   | 1200 RTW                           |
| Site Boundary  | [Red Outline]                      |

**KEY PLAN**

|                    |                            |                             |
|--------------------|----------------------------|-----------------------------|
| Construction Risks | Maintenance/Cleaning Risks | Demolition/Adaptation Risks |
|--------------------|----------------------------|-----------------------------|

In addition to the hazards/risks normally associated with the type of works detailed on this drawing take note of the above.  
It is assumed that all works on this drawing will be carried out by a competent contractor working, where appropriate, to an appropriate method statement.

**SAFETY HEALTH AND ENVIRONMENTAL INFORMATION BOX**

**NOTES**

- DO NOT SCALE.
- Should there be any conflict between the details indicated on this drawing and those indicated on other drawings the Engineer should be informed PRIOR to construction on site.
- Until technical approval has been obtained from the relevant Authority, it should be understood that all drawings issued are Preliminary and NOT for construction. Should the contractor commence site work prior to such approval being given, it is entirely at his own risk.
- All dimensions are in millimetres unless otherwise stated.
- The BSP Hazard Identification and Risk Assessment information for this project must be reviewed and understood by the contractor PRIOR to the commencement of any works on site.
- This drawing contains the following model files:
- This drawing to be viewed in conjunction with:

|                       |    |          |    |          |    |          |
|-----------------------|----|----------|----|----------|----|----------|
| Updated Site Boundary | FE | 08/11/23 | PN | 08/11/23 | TG | 08/11/23 |
| First Issue           | FE | 30/10/23 | PN | 30/10/23 | TG | 30/10/23 |

| REV | COMMENT | DRAWN BY | DATE | CHECKED BY | DATE | APPROVED BY | DATE |
|-----|---------|----------|------|------------|------|-------------|------|
|     |         |          |      |            |      |             |      |

SCALE @ A1  
1:250

ISSUING OFFICE  
NOTTINGHAM

PROJECT NUMBER  
22-0364

**CLIENT APPROVAL**

A - APPROVED  
B - APPROVED WITH COMMENTS  
C - DO NOT USE

**STATUS**  
S1

**PURPOSE OF ISSUE**  
PRELIMINARY

CIVIL • STRUCTURAL • TRANSPORTATION • GEOTECHNICAL • ENVIRONMENTAL

**bsp**  
CONSULTING  
12 Oxford Street  
Nottingham, NG1 5BG  
Tel: 0545 413 4000  
e-mail: info@bsp-consulting.co.uk  
Also offices in Derby, Leicester and Sheffield

**bsi**  
Design and Construction  
KITEMARK™

**PROJECT**  
Former Woodlands Hotel,  
Coupals Road, Haverhill

**TITLE**  
Level Strategy

**CLIENT**  
Country Court Care Homes

|                         |            |         |      |            |        |     |
|-------------------------|------------|---------|------|------------|--------|-----|
| PROJECT ORIGINATOR      | FUNCTIONAL | SPATIAL | FORM | DISCIPLINE | NUMBER | REV |
| WHCH-BSP-ZZ-XX-D-C-0210 |            |         |      |            |        | P02 |