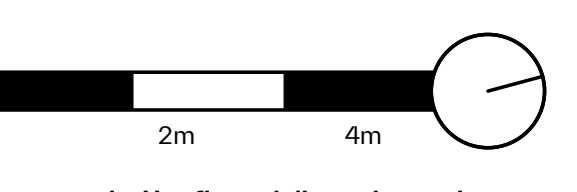


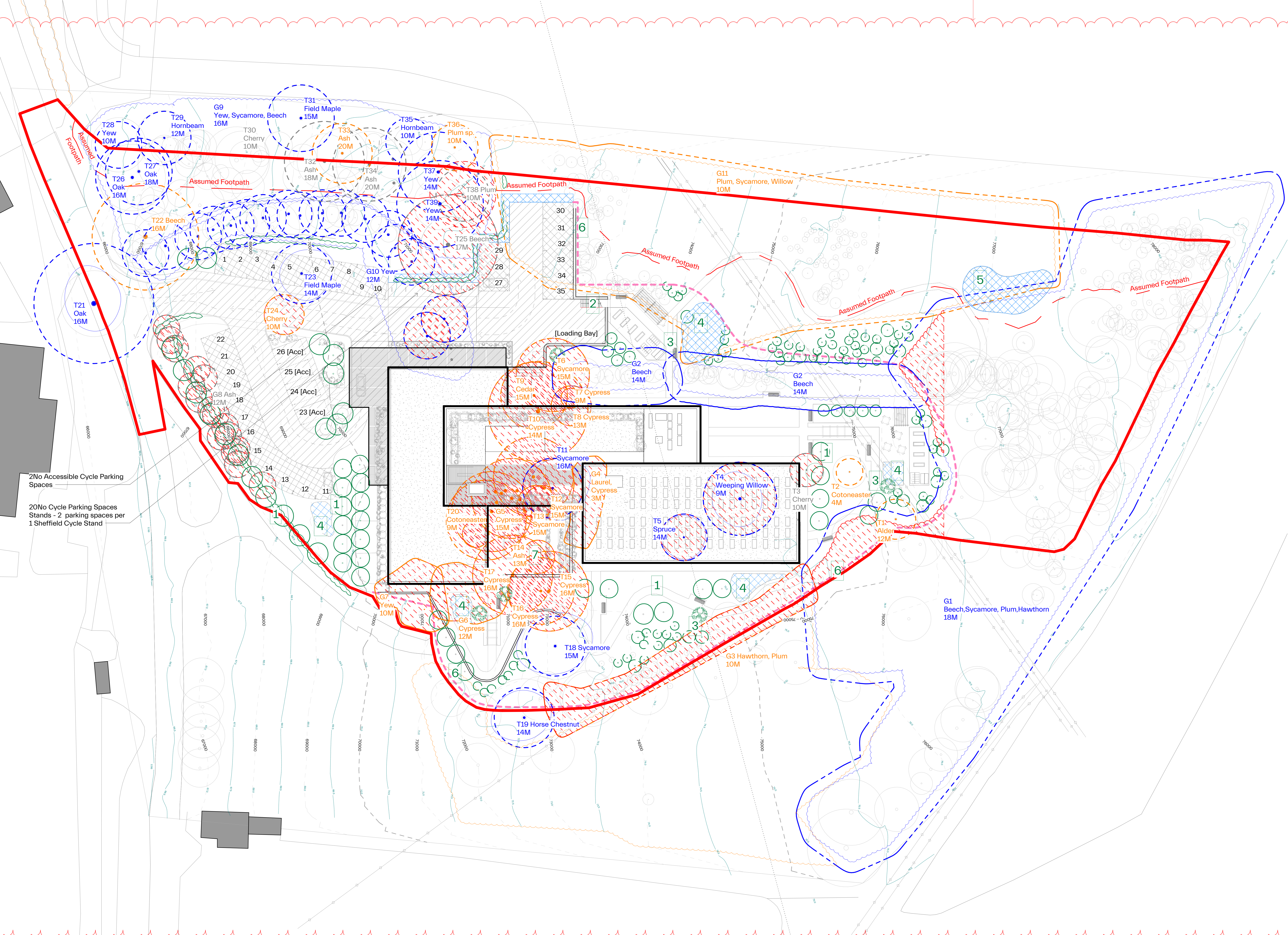
Revision	Date	Drawn	Approved	Notes
A	04.08.22	MS	PW	For information
B	10.08.22	CP	PW	Existing trees
C	06.10.22	CP	PW	Removed trees
D	27.01.23	MS	CP	Updates
E	02.02.23	MS	CP	Updates
F	10.02.23	MS	CP	Coordination
G	07.03.23	MS	CP	Design Updates
H	05.04.23	CP	CP	Design Updates
I	02.06.23	MS	PW	Planning App
J	12.06.23	CP	PW	Planning App
K	22.06.23	MS	CP	Planning App
L	26.10.23	CP	CP	Planning App
M	07.11.23	CP	CP	See Clouds
N	14.11.23	CP	CP	Planning App
P	08.12.23	CP	CP	Revision 20
Q	18.02.24	MS	PW	Carpark Layout



Do not scale. Use figured dimensions only. Confirm all dimensions on site.

- Key
- Site Boundary
 - - - Secure Garden Boundary
 - T1 Tree reference ID
 - 12m Tree species
 - 12m Height
 - Category U Tree / Tree Group
RPA shown dashed
 - Category C Tree / Tree Group
RPA shown dashed
 - Category B Tree / Tree Group
RPA shown dashed
 - Existing Tree - Retained
 - Proposed Tree
 - Proposed Feature Tree
 - Tree to be removed
 - Hard Landscaping / Main vehicle access route
 - Soft Landscaping / Shared Surface
 - Attenuation Feature
 - Tree Avenue as per FPCR information
 - External Pedestrian and Maintenance Access to Garden as per FPCR information
 - Single Surface Garden Footpath as per FPCR information
 - Habitat Swales - with underground connections as per FPCR information
 - Wet Habitat Area (according to levels of vegetation) as per FPCR information
 - Secure Garden Boundary as per FPCR information
 - Rain Garden

REVISION Q: Updated Carpark layout and parking bay sizes. Adjustments to landscape to suite the new proposed parking layout.



2 No Accessible Cycle Parking Spaces
 20 No Cycle Parking Spaces
 Stands - 2 parking spaces per
 1 Sheffield Cycle Stand