



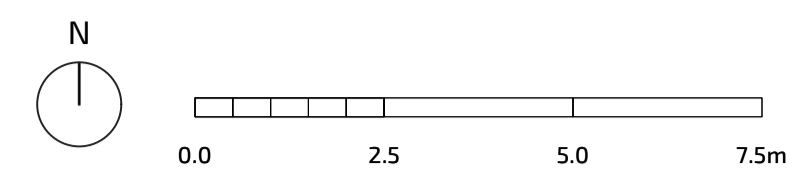
- 2 - Cornus sanguinea
- 3 - Crataegus monogyna
- 2 - Rhamnus cathartica
- 3 - Rosa arvensis
- 3 - Rosa canina

- 1 - Acer campestre
- 2 - Cornus sanguinea
- 1 - Corylus avellana
- 2 - Crataegus monogyna
- 1 - Viburnum opulus

1 - Pyrus communis 12-14cm

2 - Prunus domestica 'Opal' 12-14cm

2 - Malus domestica 'Golden Delicious' 12-14cm



- Site Boundary
- Tree Planting
- Feature Tree Planting
- Orchard Tree Planting
- Tree Scrub Planting
- Potential Root Barrier Location
- Potential Location of No-Dig Path Structure - Cellweb or similar approved

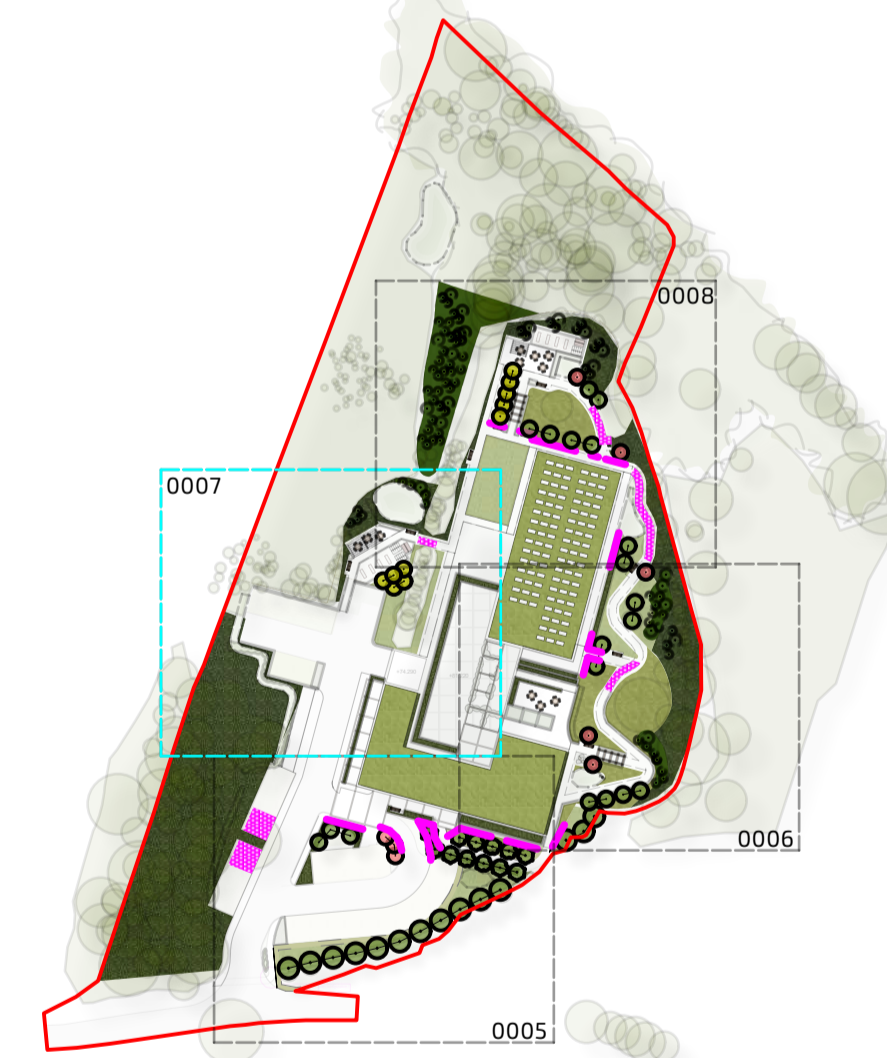
NOTES
 - This package of drawings provides details of proposed individual tree planting and tree groups, it does not include hedgerows, shrubs or ornamental planting. Details of which will be provided at a later stage. All proposals are in accordance with the Landscape Strategy (11119-FPCR-XX-XX-DR-L-0003)

- All whip planting to be staked and protected with a shrub shelter. All proposed individual trees to be double staked although some orchard trees may be single staked, according to position and size.

- Regarding tree mixes - **Scattered Scrub Mix** should be planted at 1m centres in irregular patterns (avoiding straight lines). Plantings will be grouped by species in random groups of 3, 5 or 7. The Landscape Strategy Plan proposes a Woodland Mix to be applied to the site according to requirements on the ground.

- Both Root Barrier and No Dig surfacing solutions are proposed in the adjacent drawing. Specification would be subject to adjacent surfaces and water demand of the proposed tree species. Green Blue Urban Reroot 300/600/900 or similar approved should be used as root barrier. CellWeb Tree Root Protection System, or similar approved, should be applied to the ground where hard surfaces are situated within the RPA of existing trees.

- General details of the No Dig Specification are included in drawing (11119-FPCR-XX-XX-DR-L-0009)



KEY PLAN - NTS				DRAFT	
P02	10/09/2024	Amedned path location.		SDO	JPF/LMF
P01	30/07/24	FIRST ISSUE		JEE	JPF
rev	date	description		dm	chk

client
Country Court Care

project
**Former Woodlands Hotel
 Haverhill**

title		scale	
DETAILED TREE PLANTING PLAN (SHEET 3 OF 4)		1:100 @ A1	
number	status	rev	
11119-FPCR-XX-XX-DR-L-0007	S3	P02	