

- Site Boundary
- Tree Planting
- Feature Tree Planting
- Orchard Tree Planting
- Tree Scrub Planting
- Potential Root Barrier Location
- Potential Location of No-Dig Path Structure - Cellweb or similar approved

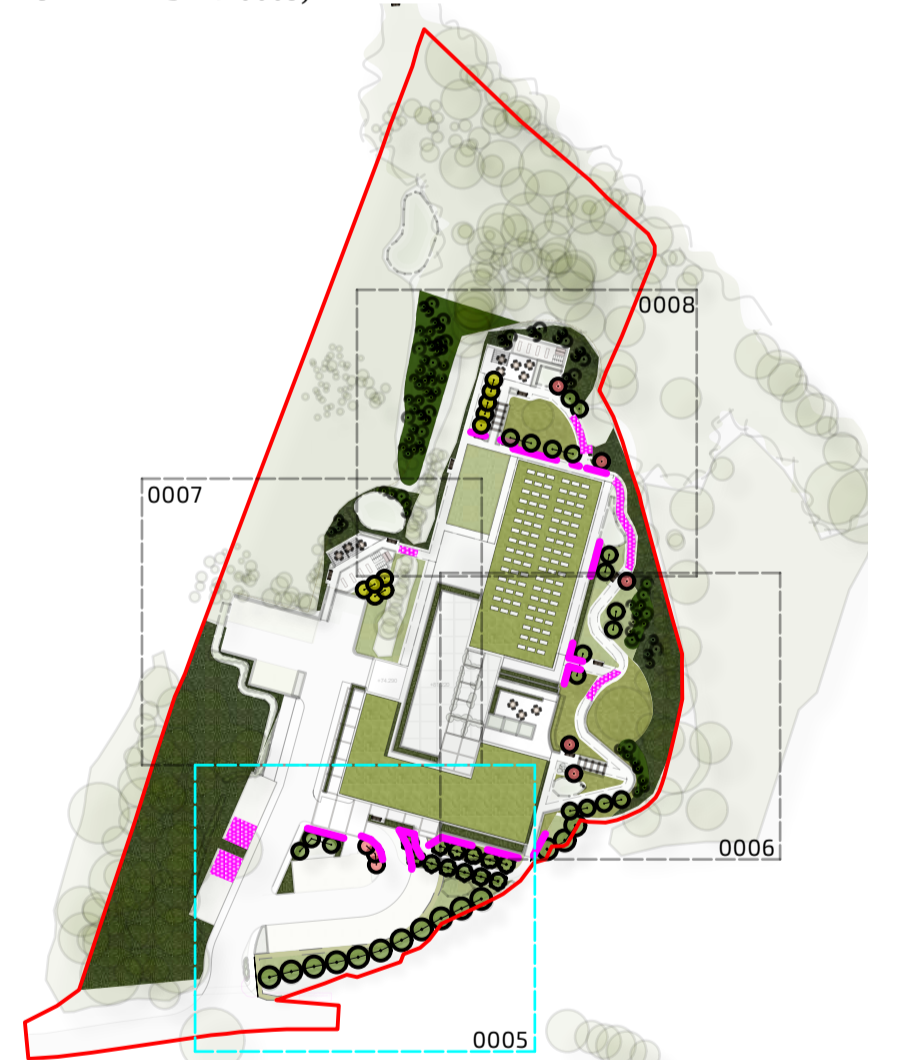
**NOTES**  
 - This package of drawings provides details of proposed individual tree planting and tree groups, it does not include hedgerows, shrubs or ornamental planting. Details of which will be provided at a later stage. All proposals are in accordance with the Landscape Strategy (11119-FPCR-XX-XX-DR-L-0003)

- All whip planting to be staked and protected with a shrub shelter. All proposed individual trees to be double staked although some orchard trees may be single staked, according to position and size.

- Regarding tree mixes - **Scattered Scrub Mix** should be planted at 1m centres in irregular patterns (avoiding straight lines). Plantings will be grouped by species in random groups of 3, 5 or 7. The Landscape Strategy Plan proposes a Woodland Mix to be applied to the site according to requirements on the ground.

- Both Root Barrier and No Dig surfacing solutions are proposed in the adjacent drawing. Specification would be subject to adjacent surfaces and water demand of the proposed tree species. Green Blue Urban Reroot 300/600/900 or similar approved should be used as root barrier. CellWeb Tree Root Protection System, or similar approved, should be applied to the ground where hard surfaces are situated within the RPA of existing trees.

- General details of the No Dig Specification are included in drawing - (11119-FPCR-XX-XX-DR-L-0009)



**KEY PLAN - NTS**  
 P02 10/09/2024 Amedned path location.  
 SDO JPF/LMF  
 P01 30/07/24 FIRST ISSUE JEE JPF  
 rev date description drn / chk

client  
**Country Court Care**  
 project  
**Former Woodlands Hotel  
 Haverhill**

title  
**DETAILED TREE PLANTING PLAN  
 (SHEET 1 OF 4)**  
 number status rev  
 11119-FPCR-XX-XX-DR-L-0005 S3 P02



| Qty                            | Latin Name                         | Common Name                        | Height    | Form                 | Rate/Plants m <sup>2</sup> |            |         |  |
|--------------------------------|------------------------------------|------------------------------------|-----------|----------------------|----------------------------|------------|---------|--|
| <b>WOODLAND SCRUB PLANTING</b> |                                    |                                    |           |                      |                            |            |         |  |
| 39                             | Acer campestre                     | Field Maple                        | 60-80cm   | Whip                 | 1                          |            |         |  |
| 47                             | Cornus sanguinea                   | Dogwood                            | 60-80cm   | Whip                 | 1                          |            |         |  |
| 58                             | Corylus avellana                   | Hazel                              | 60-80cm   | Whip                 | 1                          |            |         |  |
| 70                             | Crataegus monogyna                 | Hawthorn                           | 60-80cm   | Whip                 | 1                          |            |         |  |
| 19                             | Ligustrum vulgare                  | Common privet                      | 60-80cm   | Whip                 | 1                          |            |         |  |
| 41                             | Rhamnus cathartica                 | Common buckthorn                   | 60-80cm   | Whip                 | 1                          |            |         |  |
| 28                             | Rosa arvensis                      | Field rose                         | 50-60cm   | Whip                 | 1                          |            |         |  |
| 45                             | Rosa canina                        | Dog Rose                           | 60-80cm   | Whip                 | 1                          |            |         |  |
| 36                             | Sorbus aucuparia                   | Mountain ash or Rowan              | 60-80cm   | Whip                 | 1                          |            |         |  |
| 41                             | Viburnum opulus                    | Guelder rose                       | 80-100cm  | Whip                 | 1                          |            |         |  |
| 424                            |                                    |                                    |           |                      |                            |            |         |  |
| <b>INDIVIDUAL TREES</b>        |                                    |                                    |           |                      |                            |            |         |  |
| Qty                            | Latin Name                         | Common Name                        | Height    | Form                 | Root Condition             | Clear Stem | Girth   |  |
| 3                              | Amelanchier arborea                | Amelanchier                        | 350-425cm | Heavy Standard       | RB/C                       | Min 200cm  | 12-14cm |  |
| 12                             | Carpinus betulus 'Frans Fontaine'  | Hornbeam 'Frans Fontaine'          | 450-600cm | Extra Heavy Standard | RB                         | Min 200cm  | 18-20cm |  |
| 3                              | Magnolia Heaven Scent              | Galaxy Magnolia                    | 350-425cm | Heavy Standard       | RB                         | Min 200cm  | 12-14cm |  |
| 3                              | Pinus sylvestris                   | Scots Pine                         | 350-425cm | Heavy Standard       | RB                         | Min 200cm  | 12-14cm |  |
| 2                              | Prunus 'Amanogawa'                 | Cherry                             | 425-500cm | Extra Heavy Standard | RB                         | Min 200cm  | 14-16cm |  |
| 2                              | Prunus avium                       | Gean, Wild cherry                  | 350-425cm | Heavy Standard       | RB                         | Min 200cm  | 12-14cm |  |
| 2                              | Prunus padus                       | Bird cherry                        | 350-425cm | Heavy Standard       | RB                         | Min 200cm  | 12-14cm |  |
| 6                              | Pyrus calleryana                   | Callery pear 'Chanticleer'         | 350-425cm | Heavy Standard       | RB                         | Min 200cm  | 12-14cm |  |
| 1                              | Quercus petraea                    | Sessile oak, Durmast oak           | 350-425cm | Heavy Standard       | RB                         | Min 200cm  | 12-14cm |  |
| 3                              | Quercus robur                      | Common, English oak                | 350-425cm | Heavy Standard       | RB                         | Min 200cm  | 12-14cm |  |
| 3                              | Sorbus aria                        | Whitebeam                          | 425-500cm | Extra Heavy Standard | RB                         | Min 200cm  | 14-16cm |  |
| 2                              | Sorbus aucuparia                   | Mountain ash or Rowan              | 425-500cm | Extra Heavy Standard | RB                         | Min 200cm  | 14-16cm |  |
| 11                             | Tilia cordata 'Greenspire'         | Lime 'Greenspire'                  | 450-600cm | Extra Heavy Standard | RB                         | Min 200cm  | 18-20cm |  |
| 53                             |                                    |                                    |           |                      |                            |            |         |  |
| <b>FRUIT TREES</b>             |                                    |                                    |           |                      |                            |            |         |  |
| Qty                            | Latin Name                         | Common Name                        | Height    | Form                 | Root Condition             | Clear Stem | Girth   |  |
| 2                              | Malus domestica 'Golden Delicious' | Malus domestica 'Golden Delicious' | 120-150cm | Half-standard        | RB/C                       | Min 200cm  | 12-14cm |  |
| 2                              | Malus domestica 'Grenadier'        | Malus domestica 'Grenadier'        | 120-150cm | Half-standard        | RB/C                       | Min 200cm  | 12-14cm |  |
| 2                              | Prunus avium 'Stella'              | Prunus avium 'Stella'              | 350-425cm | Heavy Standard       | RB                         | Min 200cm  | 12-14cm |  |
| 2                              | Prunus domestica 'Opal'            | Prunus domestica 'Opal'            | 350-425cm | Heavy Standard       | RB                         | Min 200cm  | 12-14cm |  |
| 2                              | Pyrus communis                     | Pyrus communis                     | 350-425cm | Heavy Standard       | RB                         | Min 200cm  | 12-14cm |  |
| 10                             |                                    |                                    |           |                      |                            |            |         |  |