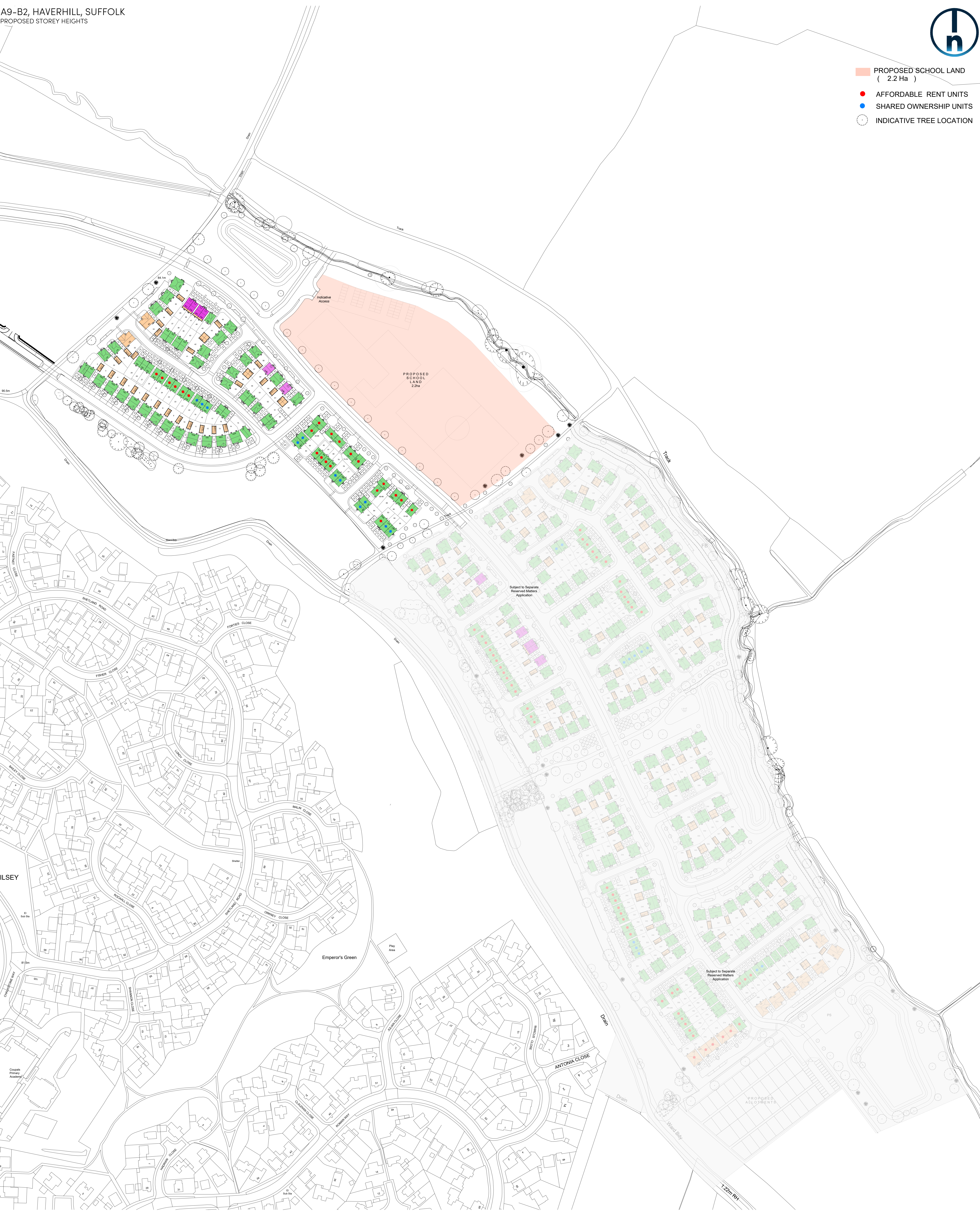




- PROPOSED SCHOOL LAND
(2.2 Ha)
- AFFORDABLE RENT UNITS
- SHARED OWNERSHIP UNITS
- INDICATIVE TREE LOCATION



KEY

- No. of Storeys
- 1 Storeys
 - 2 Storeys
 - 2.5 Storeys

B	31-10-25	RM modification	YC
A	07-08-25	Updated to the latest site layout Rev M	YC
Rev	Date	Amendment	Initials

Project:
A9-B2, HAVERHILL
SUFFOLK
Client:
BLOOR HOMES (EASTERN)
Drawing:
PROPOSED STOREY HEIGHTS PLAN -A

Drawing no:	24.2068A9-B2.2010	Rev:	B
-------------	-------------------	------	---

Scale@A0: 1:1000	Date: JUNE 2025	Drawn: DC	Checked: YC
------------------	-----------------	-----------	-------------

finc Finc Architects Ltd
61-63 New London Road (Chelmsford) Essex | CM2 9ND
T: +44 (0) 2045 933969
W: www.fincharchitects.com
E: enquiry@fincharchitects.com

Disclaimer: © Finc Architects. Limited holds the copyright to all the information contained within this document and this entire content may be obtained before copying or using the data other than for the purpose it was originally supplied.
All dimensions and measurements to be checked on site.
Do not scale from this drawing. This drawing is to be printed in colour.

