



CLAM496  
FRONT ELEVATION

CLAM496  
SIDE ELEVATION



CLAM496  
REAR ELEVATION



CLAM496  
SIDE ELEVATION

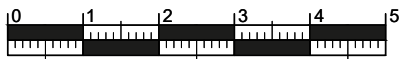
National Space Standards		
4B7P	Actual Area	NSS Requirement
Ground Floor Plan	75.97m <sup>2</sup>	
First Floor Plan	74.52m <sup>2</sup>	
Total Floor Area m <sup>2</sup>	150.49m <sup>2</sup>	115.00m <sup>2</sup>
Total Floor Area ft <sup>2</sup>	1620ft <sup>2</sup>	1238ft <sup>2</sup>
Bedroom 1	15.23m <sup>2</sup>	11.5m <sup>2</sup>
Bedroom 2	11.63m <sup>2</sup>	11.5m <sup>2</sup>
Bedroom 3	11.87m <sup>2</sup>	11.5m <sup>2</sup>
Bedroom 4	10.68m <sup>2</sup>	7.5m <sup>2</sup>
Store 1 Under Stair	1.34m <sup>2</sup>	
Store Bedroom 1	0.54m <sup>2</sup>	
Store Bedroom 3	0.26m <sup>2</sup>	
Store Landing	0.86m <sup>2</sup>	
Built in Store Total	3.00m <sup>2</sup>	3.00m <sup>2</sup>

DOVER  
CLA RENDER  
M496.PL-02

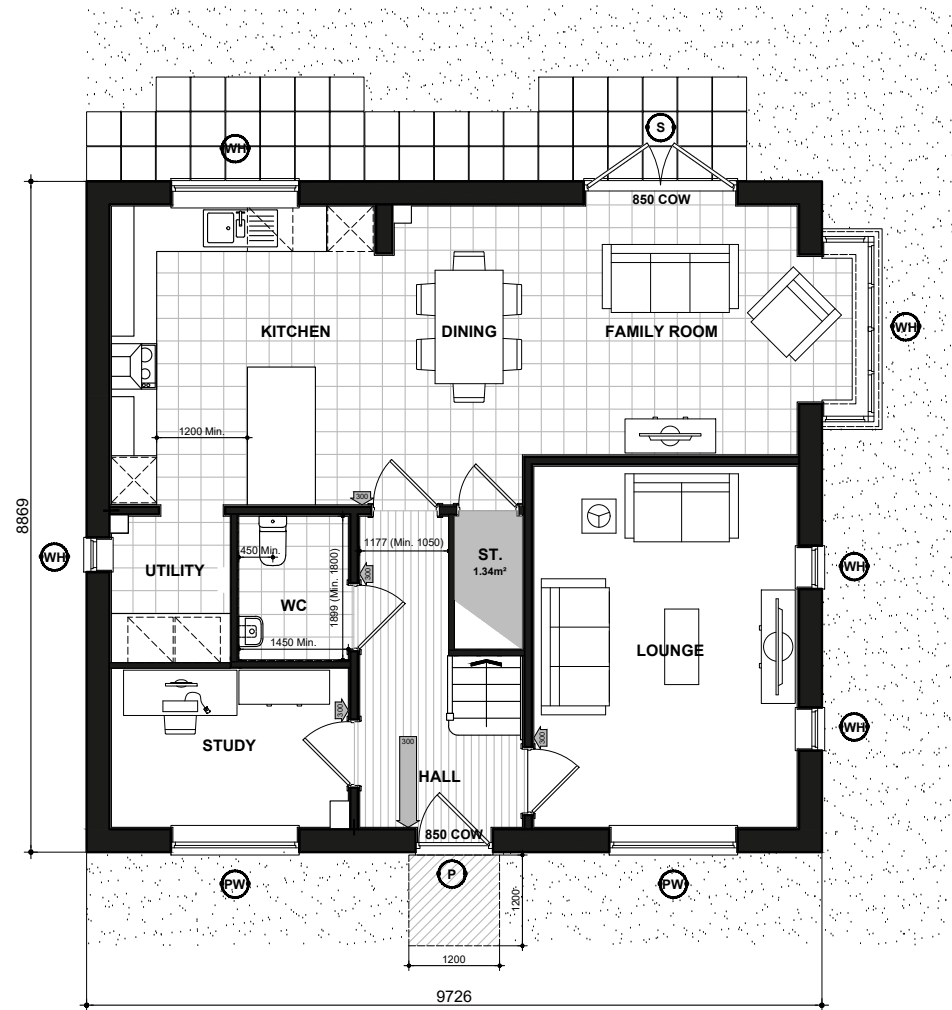
DATE: JULY 2023      REV:  
SCALE: 1:100 @ A3

DRAWN: JG      152.26m<sup>2</sup>  
CHECKED: GPM      1639ft<sup>2</sup>

BLOOR HOMES

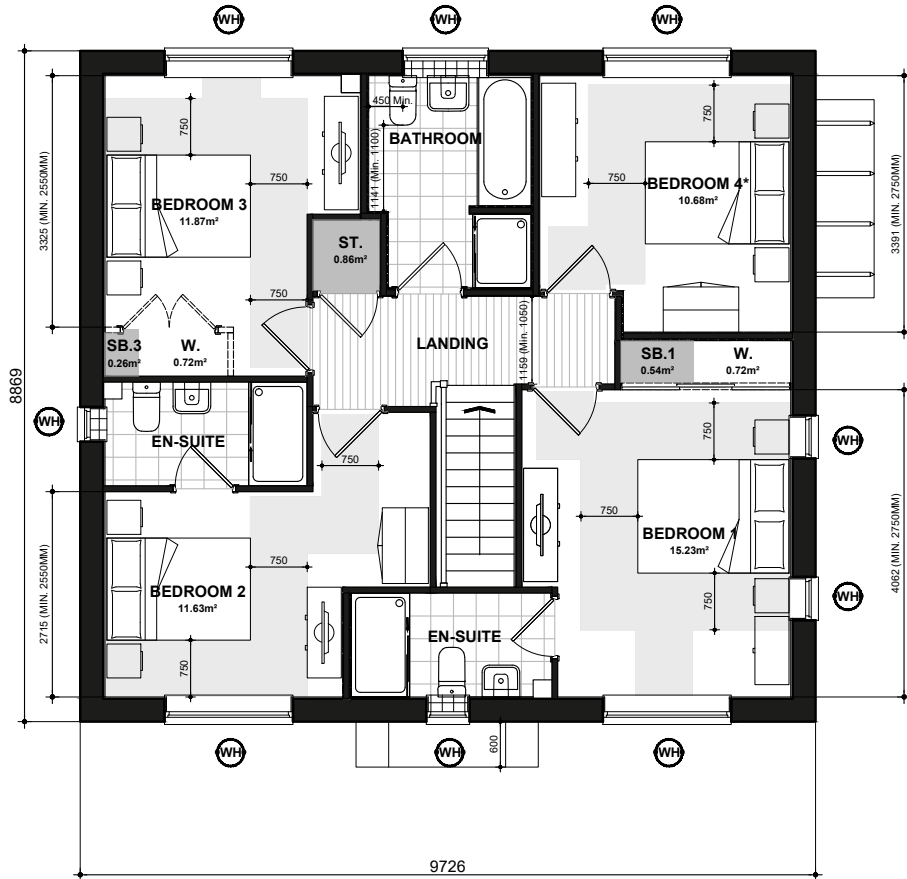


Scale 1:100



M496  
GROUND FLOOR PLAN

- P** DENOTES : PRINCIPLE PRIVATE ENTRANCE NOMINATED AS STEP FREE ACCESS. ENTRANCE DOOR TO COMPLY WITH PROVISIONS A - I OF PARAGRAPH 2.20 PART M4(2) PRIVATE ENTRANCES:
- LEVEL EXTERNAL LANDING WITH A MIN WIDTH/DEPTH OF 1200MM.
  - THE LANDING IS COVERED FOR A MIN WIDTH OF 900MM AND A MIN DEPTH OF 600MM.
  - FULLY DIFFUSED AUTOMATED LIGHTING.
  - DOOR HAS A MINIMUM CLEAR OPENING WIDTH OF 850MM. IF A DOUBLE DOOR THE MAIN LEAF TO PROVIDE THE REQUIRED OPENING WIDTH.
  - A MINIMUM 300 NIB IS PROVIDED TO THE LEADING EDGE OF THE DOOR AND MAINTAINED FOR A MIN 1200MM BEYOND IT.
  - DOOR REVEAL DEPTH IS MAX 200MM.
  - THE THRESHOLD IS AN ACCESSIBLE THRESHOLD.
- S** DENOTES : ALL OTHER EXTERNAL DOORS. DOOR TO COMPLY WITH PROVISIONS D - I OF PARAGRAPH 2.20 PART M4(2) PRIVATE ENTRANCES:
- DOOR HAS A MINIMUM CLEAR OPENING WIDTH OF 850MM. IF A DOUBLE DOOR THE MAIN LEAF TO PROVIDE THE REQUIRED OPENING WIDTH.
  - A MINIMUM 300 NIB IS PROVIDED TO THE LEADING EDGE OF THE DOOR AND MAINTAINED FOR A MIN 1200MM BEYOND IT.
  - DOOR REVEAL DEPTH IS MAX 200MM.
  - THE THRESHOLD IS AN ACCESSIBLE THRESHOLD.
- 850 COW** DENOTES : ENTRANCE DOORS TO HAVE 850mm CLEAR OPENING WIDTH. IN ACCORDANCE WITH PART M4 (2) DIAGRAM 2.2.
- NOTE** : PLEASE REFER TO SITE LAYOUT FOR AN ALTERNATIVE PRIVATE ENTRANCE WHERE A STEP FREE ACCESS CANNOT BE ACHIEVED TO THE PRINCIPLE PRIVATE ENTRANCE.
- 1200** DENOTES : 300mm NIB IS PROVIDED TO THE LEADING EDGE OF ALL DOORS ON THE ENTRANCE STOREY.
- 1200** DENOTES : PRINCIPLE PRIVATE ENTRANCE A 300mm NIB IS PROVIDED TO THE LEADING EDGE AND THE EXTRA WIDTH MAINTAINED 1200mm BEYOND IT.
- 1200mm MIN. CLEAR SPACE** IN FRONT OF AND BETWEEN ALL KITCHEN UNITS & APPLIANCES.
- PW** DENOTES : PRINCIPLE LIVING SPACE. GLAZED DOOR OR WINDOW CILL TO START MAX. 850MM AFFL. HANDLE OF 1NO. MIN. WINDOW IN PRINCIPLE LIVING AREA BETWEEN 450MM - 1200MM AFFL. UNLESS FITTED WITH REMOTE OPENING DEVICE WITHIN THIS HEIGHT RANGE.
- WH** DENOTES : ALL OTHER WINDOWS TO HAVE HANDLES LOCATED BETWEEN 450MM-1400MM AFFL. UNLESS FITTED WITH A REMOTE OPENING DEVICE THAT IS FITTED WITHIN THIS HEIGHT RANGE.
- BOILER TIMER CONTROLS & THERMOSTATS SHOULD BE EITHER:
- MOUNTED BETWEEN 900MM AND 1200MM ABOVE FINISHED FLOOR LEVEL ON THE BOILER, or
  - HAVE SEPARATE CONTROLLERS (WIRED or WIRELESS) MOUNTED ELSEWHERE IN AN ACCESSIBLE LOCATION WITHIN THE SAME HEIGHT RANGE
- BATHROOM AND WC WALLS DIRECTLY BEHIND THE TOILET SHOULD BE STRONG ENOUGH TO SUPPORT GRAB RAILS AND OTHER ADAPTIONS THAT COULD IMPOSE A LOAD OF UP TO 1.5Kn/M² AS PER DETAIL [IW400.3](#)
- ALL OTHER BATHROOM AND WC WALLS SHOULD BE STRONG ENOUGH TO SUPPORT ADAPTIONS THAT COULD IMPOSE A LOAD OF UP TO 0.85Kn/M² AS PER DETAIL [IW400.5](#)
- ACCESSIBLE BATHROOM WITH WC/BASIN/BATH ON THE SAME FLOOR AS THE PRINCIPLE DOUBLE BEDROOM.
- BED REFERENCES:**
- KSB - KING SIZE BED 1500 X 2000
  - DB - DOUBLE BED 1900 X 1350
  - SB - SINGLE BED 900 X 1900
- DOUBLE BEDROOM (PRINCIPLE) TO HAVE 750mm CLEAR ACCESS ZONE TO BOTH SIDES AND FOOT OF BED.
- SINGLE OR TWIN BEDROOM TO HAVE 750mm CLEAR ACCESS ZONE TO ONE SIDE OF BED.
- REFER TO DETAILS [IS906.1](#) & [IS906.2](#) FOR FURTHER INFORMATION.



M496  
FIRST FLOOR PLAN

\* Denotes floor areas shown to comply with National Described Space Standards (see schedule). Room layout shown as furnished and does not demonstrate compliance.



National Space Standards		
4B7P	Actual Area	NSS Requirement
Ground Floor Plan	75.97m²	
First Floor Plan	74.52m²	
Total Floor Area m²	150.49m²	115.00m²
Total Floor Area ft²	1620ft²	1238ft²
Bedroom 1	15.23m²	11.5m²
Bedroom 2	11.63m²	11.5m²
Bedroom 3	11.87m²	11.5m²
Bedroom 4	10.68m²	7.5m²
Store 1 Under Stair	1.34m²	
Store Bedroom 1	0.54m²	
Store Bedroom 3	0.26m²	
Store Landing	0.86m²	
Built in Store Total	3.00m²	3.00m²

# DOVER

## FLOOR PLANS

### M496.PL-03

DATE: JULY 2023 REV:  
SCALE: 1:100 @ A3

DRAWN: JG 152.26m²  
CHECKED: GPM 1639ft²

BLOOR HOMES