

QANSS.M2B4P  
FRONT ELEVATION

QANSS.M2B4P

QANSS.M2B4P-1

QANSS.M2B4P-1



QANSS.M2B4P-1  
SIDE ELEVATION



CLANSS.M2B4P-1  
REAR ELEVATION

CLNSS.M2B4P-1

CLNSS.M2B4P

CLANSS.M2B4P



QANSS.M2B4P  
SIDE ELEVATION

National Space Standards		
	Actual Area	NSS Requirement
Ground Floor Plan	39.50m <sup>2</sup>	
First Floor Plan	39.50m <sup>2</sup>	
Total floor area m <sup>2</sup>	79.00m <sup>2</sup>	79.00m <sup>2</sup>
Total floor area ft <sup>2</sup>	850ft <sup>2</sup>	850ft <sup>2</sup>
Bedroom 1	14.50m <sup>2</sup>	11.5m <sup>2</sup>
Bedroom 2	11.50m <sup>2</sup>	11.5m <sup>2</sup>
Store Bathroom	0.79m <sup>2</sup>	
Store Bedroom 3	1.21m <sup>2</sup>	
Built in store total	2.00m <sup>2</sup>	2.0m <sup>2</sup>

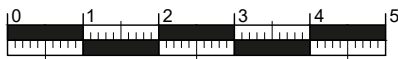
SANSOM  
QA BRICK  
NSS.M861.PL-03

DATE: JUN 2023      REV:  
SCALE: 1:100 @ A3

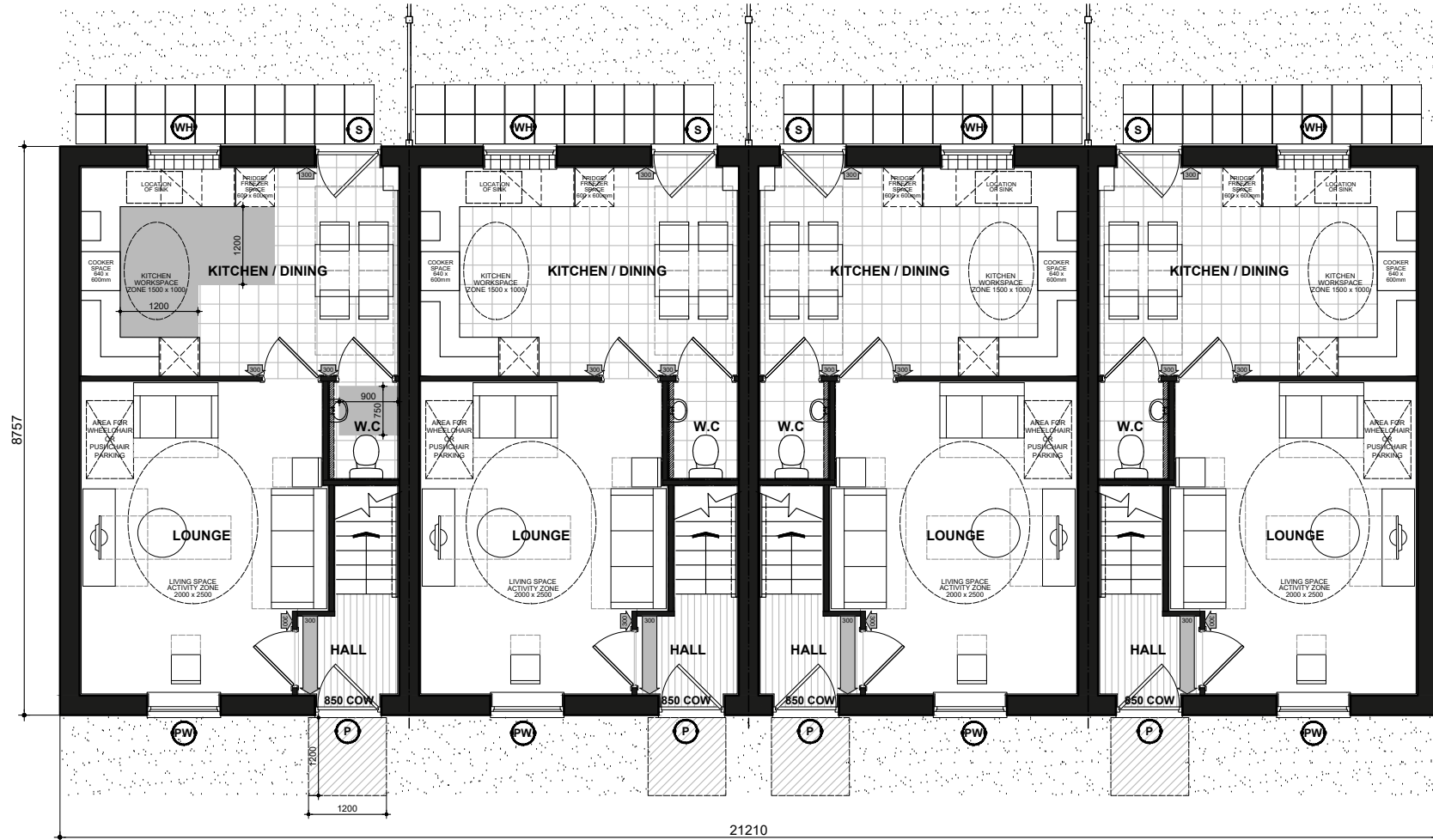
DRAWN: JO      79.00m<sup>2</sup>  
CHECKED: GPM      850 ft<sup>2</sup>







Scale 1:100

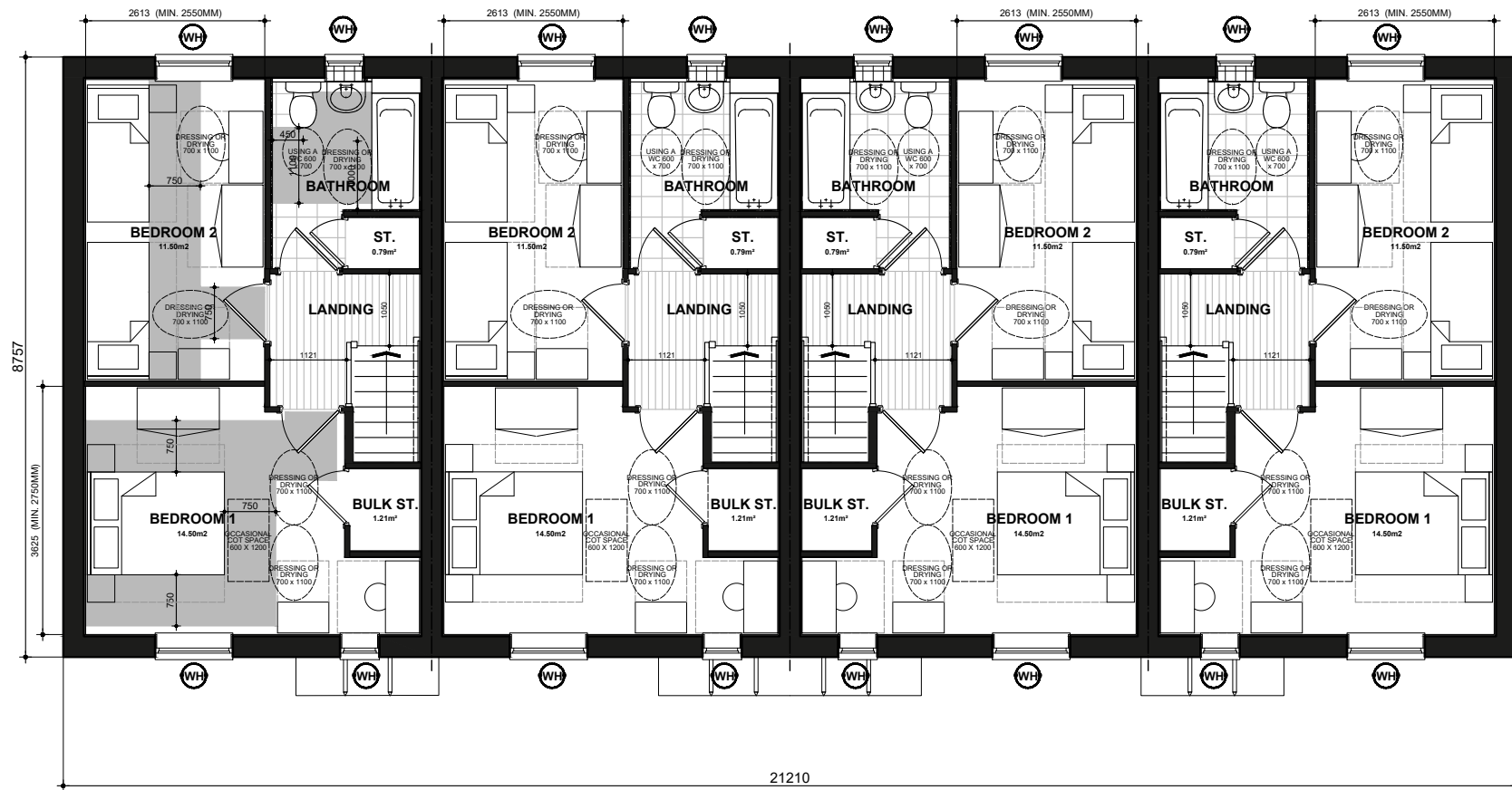


NSS.M2B4P  
GROUND FLOOR PLAN

NSS.M2B4P

NSS.M2B4P-1

NSS.M2B4P-1



FIRST FLOOR PLAN

NSS.M2B4P

NSS.M2B4P-1

NSS.M2B4P-1

**P** DENOTES : PRINCIPLE PRIVATE ENTRANCE NOMINATED AS STEP FREE ACCESS. ENTRANCE DOOR TO COMPLY WITH PROVISIONS A - I OF PARAGRAPH 2.20 PART M4(2) PRIVATE ENTRANCES:

- LEVEL EXTERNAL LANDING WITH A MIN WIDTH/DEPTH OF 1200MM.
- THE LANDING IS COVERED FOR A MIN WIDTH OF 900MM AND A MIN DEPTH OF 600MM.
- FULLY DIFFUSED AUTOMATED LIGHTING.
- DOOR HAS A MINIMUM CLEAR OPENING WIDTH OF 850MM. IF A DOUBLE DOOR THE MAIN LEAF TO PROVIDE THE REQUIRED OPENING WIDTH.
- A MINIMUM 300 NIB IS PROVIDED TO THE LEADING EDGE OF THE DOOR AND MAINTAINED FOR A MIN 1200MM BEYOND IT.
- DOOR REVEAL DEPTH IS MAX 200MM.
- THE THRESHOLD IS AN ACCESSIBLE THRESHOLD.

**S** DENOTES : ALL OTHER EXTERNAL DOORS. DOOR TO COMPLY WITH PROVISIONS D - I OF PARAGRAPH 2.20 PART M4(2) PRIVATE ENTRANCES:

- DOOR HAS A MINIMUM CLEAR OPENING WIDTH OF 850MM. IF A DOUBLE DOOR THE MAIN LEAF TO PROVIDE THE REQUIRED OPENING WIDTH.
- A MINIMUM 300 NIB IS PROVIDED TO THE LEADING EDGE OF THE DOOR AND MAINTAINED FOR A MIN 1200MM BEYOND IT.
- DOOR REVEAL DEPTH IS MAX 200MM.
- THE THRESHOLD IS AN ACCESSIBLE THRESHOLD.

**850 COW** DENOTES : ENTRANCE DOORS TO HAVE 850mm CLEAR OPENING WIDTH. IN ACCORDANCE WITH PART M4 (2) DIAGRAM 2.2.

**NOTE** : PLEASE REFER TO SITE LAYOUT FOR AN ALTERNATIVE PRIVATE ENTRANCE WHERE A STEP FREE ACCESS CANNOT BE ACHIEVED TO THE PRINCIPLE PRIVATE ENTRANCE.

**1200** DENOTES : 300mm NIB IS PROVIDED TO THE LEADING EDGE OF ALL DOORS ON THE ENTRANCE STOREY.

**850** DENOTES : PRINCIPLE PRIVATE ENTRANCE A 300mm NIB IS PROVIDED TO THE LEADING EDGE AND THE EXTRA WIDTH MAINTAINED 1200mm BEYOND IT.

**1200mm MIN. CLEAR SPACE IN FRONT OF AND BETWEEN ALL KITCHEN UNITS & APPLIANCES.**

**PW** DENOTES : PRINCIPLE LIVING SPACE, GLAZED DOOR OR WINDOW CILL TO START MAX. 850MM AFFL. HANDLE OF 1NO. MIN. WINDOW IN PRINCIPLE LIVING AREA BETWEEN 450MM - 1200MM AFFL. UNLESS FITTED WITH REMOTE OPENING DEVICE WITHIN THIS HEIGHT RANGE.

**WH** DENOTES : ALL OTHER WINDOWS TO HAVE HANDLES LOCATED BETWEEN 450MM-1400MM AFFL. UNLESS FITTED WITH A REMOTE OPENING DEVICE THAT IS FITTED WITHIN THIS HEIGHT RANGE.

BOILER TIMER CONTROLS & THERMOSTATS SHOULD BE EITHER:  
• MOUNTED BETWEEN 900MM AND 1200MM AFFL. HANDLE OF FLOOR LEVEL ON THE BOILER, or  
• HAVE SEPARATE CONTROLLERS (WIRED or WIRELESS) MOUNTED ELSEWHERE IN AN ACCESSIBLE LOCATION WITHIN THE SAME HEIGHT RANGE

BATHROOM AND WC WALLS DIRECTLY BEHIND THE TOILET SHOULD BE STRONG ENOUGH TO SUPPORT GRAB RAILS AND OTHER ADAPTATIONS THAT COULD IMPOSE A LOAD OF UP TO 1.5kN/m² AS PER DETAIL [IW400.3](#)  
ALL OTHER BATHROOM AND WC WALLS SHOULD BE STRONG ENOUGH TO SUPPORT ADAPTATIONS THAT COULD IMPOSE A LOAD OF UP TO 0.85kN/m² AS PER DETAIL [IW400.5](#)

ACCESSIBLE BATHROOM WITH WC/BASIN/BATH ON THE SAME FLOOR AS THE PRINCIPLE DOUBLE BEDROOM.

**BED REFERENCES:**  
KSB - KING SIZE BED 1500 X 2000  
DB - DOUBLE BED 1900 X 1350  
SB - SINGLE BED 900 X 1900

DOUBLE BEDROOM (PRINCIPLE) TO HAVE 750mm CLEAR ACCESS ZONE TO BOTH SIDES AND FOOT OF BED.

SINGLE OR TWIN BEDROOM TO HAVE 750mm CLEAR ACCESS ZONE TO ONE SIDE OF BED.

REFER TO DETAILS [IS906.1](#) & [IS906.2](#) FOR FURTHER INFORMATION.

National Space Standards		
	Actual Area	NSS Requirement
Ground Floor Plan	39.50m²	
First Floor Plan	39.50m²	
Total floor area m²	79.00m²	79.00m²
Total floor area ft²	850ft²	850ft²
Bedroom 1	14.50m²	11.5m²
Bedroom 2	11.50m²	11.5m²
Store Bathroom	0.79m²	
Store Bedroom 3	1.21m²	
Built in store total	2.00m²	2.0m²

# SANSOM

## FLOOR PLANS

### NSS.M861.PL-07

DATE: JUN 2023 REV:  
SCALE: 1:100 @ A3

DRAWN: JO 79.00m²  
CHECKED: GPM 850 ft²

# BLOOR HOMES