

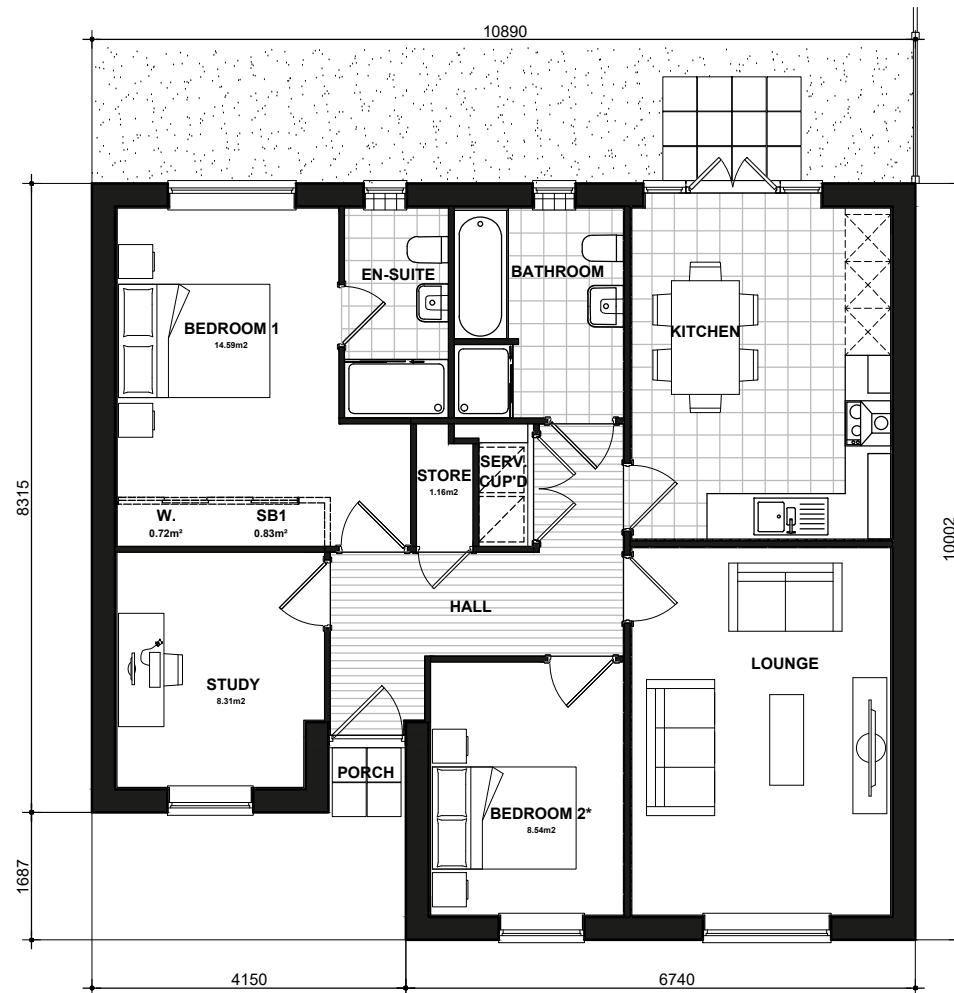
Scale 1:100



**CLA303  
FRONT ELEVATION**  
Refer to materials plan for individual plot finishes



**CLA303  
SIDE ELEVATION**



**303  
GROUND FLOOR PLAN**

\* Denotes floor areas shown to comply with National Described Space Standards (see schedule). Room layout shown as furnished and does not demonstrate compliance.



**CLA303  
REAR ELEVATION**



**CLA303  
SIDE ELEVATION**

National Space Standards		
3B4P	Actual Area	NSS Requirement
Ground Floor Plan	87.19m <sup>2</sup>	
Total floor area m <sup>2</sup>	<b>87.19m<sup>2</sup></b>	74.00m <sup>2</sup>
Total floor area ft <sup>2</sup>	939ft <sup>2</sup>	797ft <sup>2</sup>
Bedroom 1	14.59m <sup>2</sup>	11.5m <sup>2</sup>
Bedroom 2	8.54m <sup>2</sup>	7.5m <sup>2</sup>
Study	8.31m <sup>2</sup>	7.5m <sup>2</sup>
Store Hall	1.16m <sup>2</sup>	
Store Bedroom 1	0.83m <sup>2</sup>	
Store Service Cup'd	0.52m <sup>2</sup>	
<b>Built in store total</b>	<b>2.51m<sup>2</sup></b>	<b>2.5m<sup>2</sup></b>

**BELLINGHAM RV  
CLA RENDER  
303.PL-02**

DATE: JUN 2023      REV:  
SCALE: 1:100 @ A3

DRAWN: JC      88.23m<sup>2</sup>  
CHECKED: MJE      950ft<sup>2</sup>

