

Scale 1:100



**CLANSS.378**  
**FRONT ELEVATION**  
 Refer to materials plan for individual plot finishes

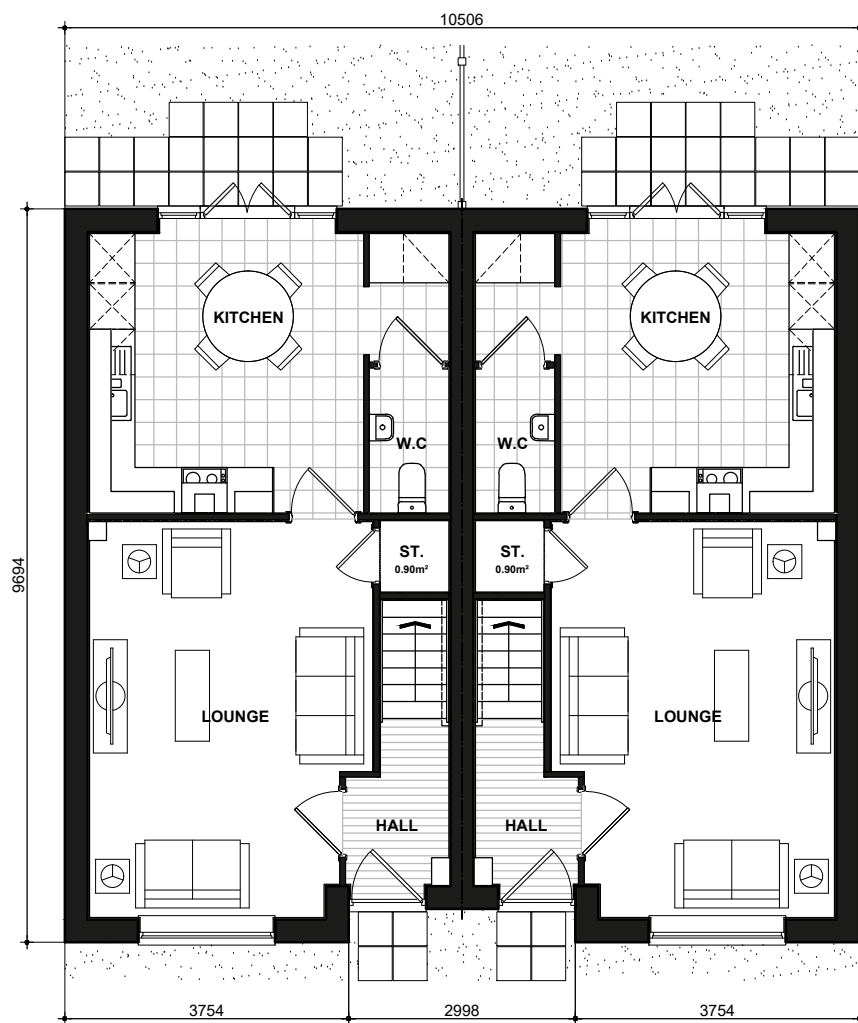


**CLANSS.378-1**  
**SIDE ELEVATION**



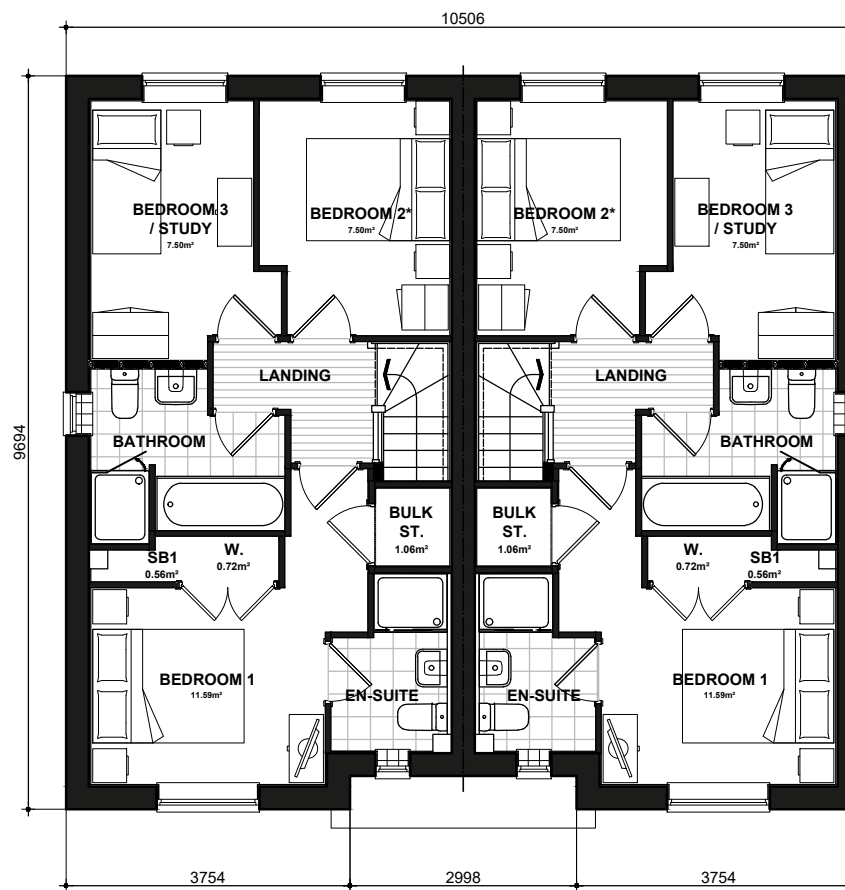
**CLANSS.378-1**  
**REAR ELEVATION**

**CLANSS.378**



**NSS.378**  
**GROUND FLOOR PLAN**

**NSS.378-1**



**NSS.378**  
**FIRST FLOOR PLAN**

\* Denotes floor areas shown to comply with National Described Space Standards (see schedule). Room layout shown as furnished and does not demonstrate compliance.

KANE - National Space Standards		
	Actual Area	NSS Requirement
Ground Floor Plan	42.21m <sup>2</sup>	
First Floor Plan	42.21m <sup>2</sup>	
Total floor area m <sup>2</sup>	84.42m <sup>2</sup>	84.00m <sup>2</sup>
Total floor area ft <sup>2</sup>	909ft <sup>2</sup>	904ft <sup>2</sup>
Bedroom 1	11.59m <sup>2</sup>	11.5m <sup>2</sup>
Bedroom 2	7.50m <sup>2</sup>	7.5m <sup>2</sup>
Bedroom 3	7.50m <sup>2</sup>	7.5m <sup>2</sup>
Store Under Stair	0.90m <sup>2</sup>	
Store (Bulk)	1.06m <sup>2</sup>	
Store Bedroom 1	0.56m <sup>2</sup>	
<b>Built in store total</b>	<b>2.51m<sup>2</sup></b>	<b>2.5m<sup>2</sup></b>

**KANE**  
 CLA BRICK  
 NSS.378\_378-1.PL-01

DATE: JUN 2023 REV:  
 SCALE: 1:100 @ A3

DRAWN: MJE 85.81m<sup>2</sup>  
 CHECKED: GPM 924ft<sup>2</sup>

