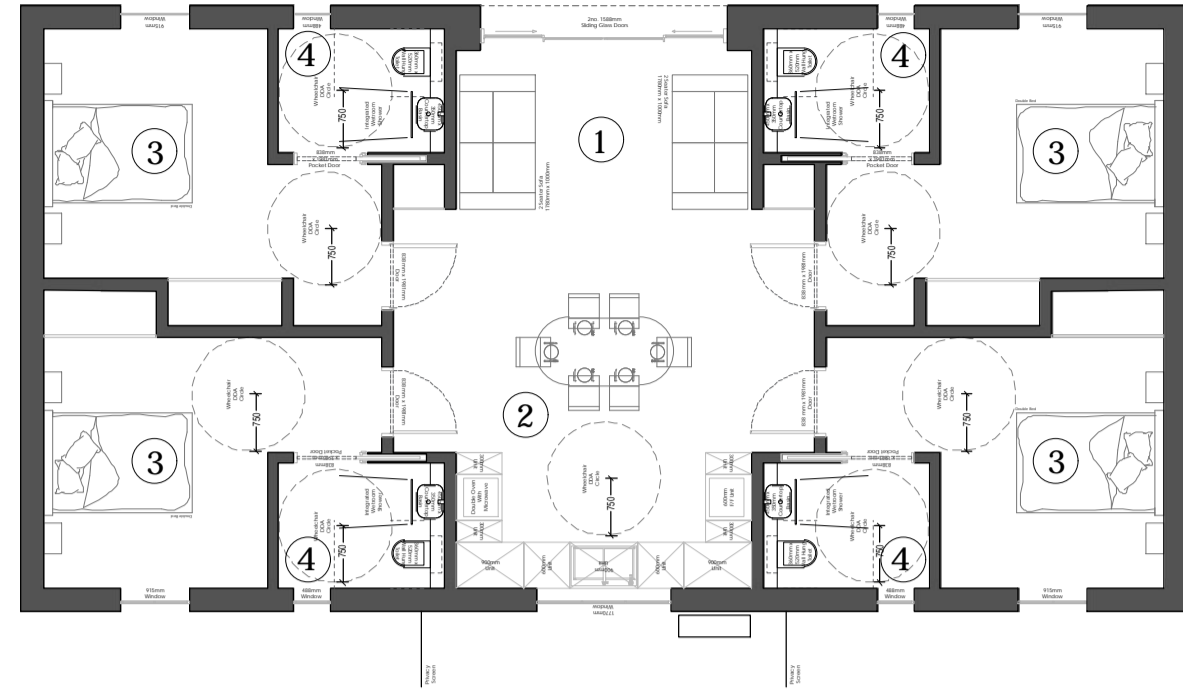


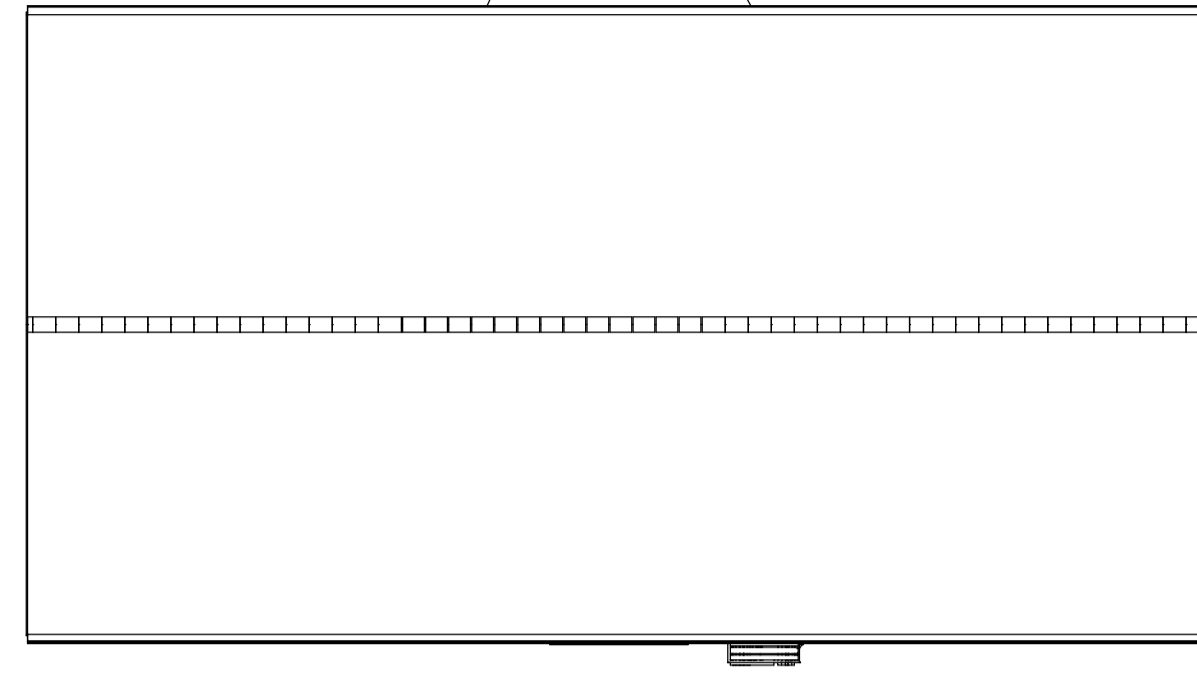
Room Key

- 1 - Lounge
- 2 - Kitchen / Dinner
- 3 - Bedroom
- 4 - En-suite



**Floor Plan: Ground**

Scale 1:100  
GIA: 110m<sup>2</sup>



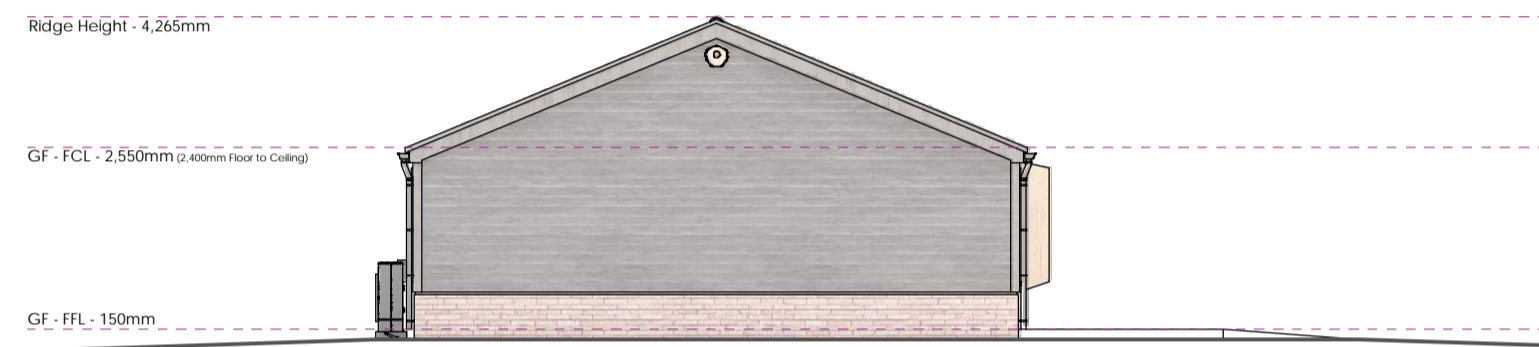
**Roof Plan**

Scale 1:100  
GIA: 110m<sup>2</sup>



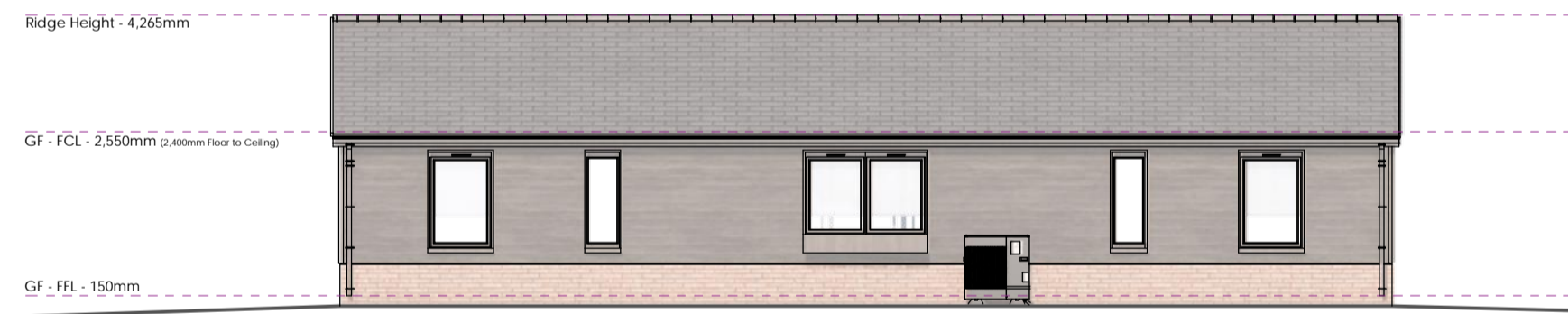
**Elevations: Front**

Scale 1:100



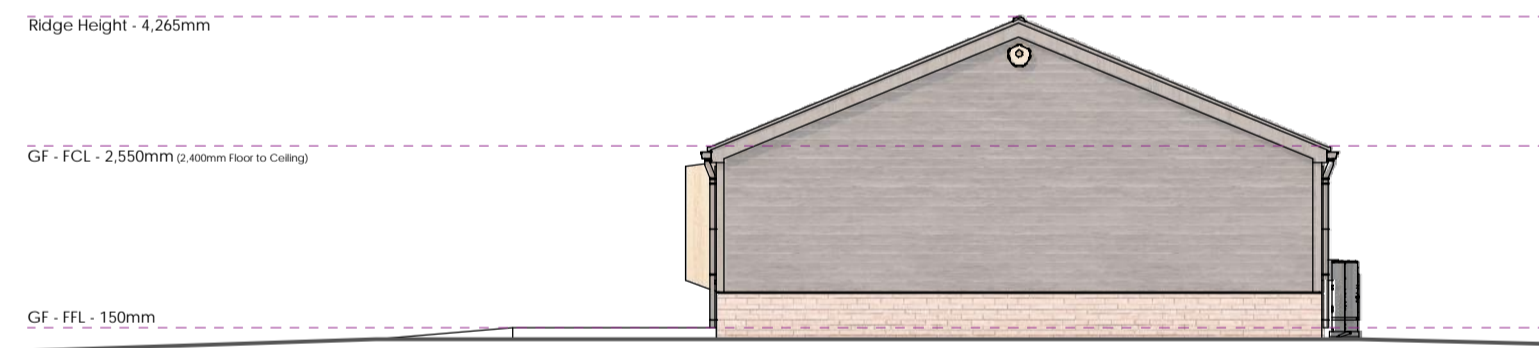
**Elevations: Side**

Scale 1:100



**Elevations: Rear**

Scale 1:100



**Elevations: Side**

Scale 1:100

Perspective View:



Design Notes:

**Tree Protection**  
Trees within the plot must be protected throughout construction and maintained indefinitely as long as they remain healthy and safe. Any trees damaged or removed must be replaced.

**Material Palette**  
Any form of construction is permitted providing the materials palette requirements set out below and within the CGIs are followed.

**Tones and Textures**  
All external materials must feature natural or earthy tones to blend seamlessly with the rural landscape and neighbouring structures. Approved colours/materials include black, grey, orange and brown. Example materials are provided CGIs. Highly reflective surfaces (other than glass) are not allowed.

**Gutters, Windows, and Doors**  
Windows and doors should be made of aluminium or timber, and all gutters should be metal.

**Boundary Treatments**  
No hard boundary treatments, such as fences, walls, or gates, are permitted forward of the principal frontage. Boundary features forward of the frontage should be composed of vegetation, such as hedges or bushes below 900 mm, along with feature planting and flowers.

Sustainability Notes

Window placement and room configuration have been carefully considered based upon the natural lighting arcs (Sun Paths) and common room usage times. This reduces the structures reliance on artificial lighting and boosts the structures energy performance by ensuring the natural lighting penetration angles are appropriate for each space.

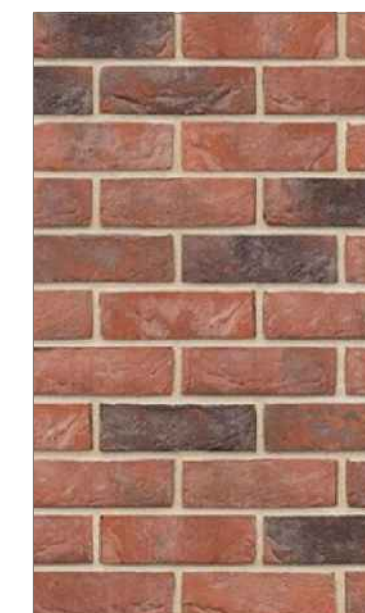
Bedrooms: 8:00am - 9:00am  
Kitchen: 8:00am - 9:00am  
Lounge: 9:00am - 5:00pm  
Dining: 5:00pm - 6:30pm  
Lounge: 6:30pm - 9:00pm  
Bedrooms: 9pm -

MCS Data

ASHIP Ecodan R32 - PASS  
Base Sound Power: 58dBa  
Determination of Directivity: Q4  
Distance to Habitable Space door or window: Greater than 4m  
dB Reduction at Distance -17 / Barrier -5 / Sound Pressure: 41  
After factoring 40dB / Background Noise -10B or 0dB - TOTAL 42  
Permitted Develop Limit: 42 dB(A)

Materials:

Brickwork



Feature Cladding



Glazing Frames



Roof



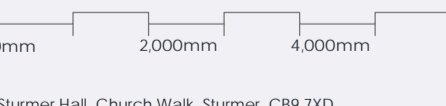
Computer Generated Images



Issue Data

A - First Issue

Scale 1:100



Sturmer Hall, Church Walk, Sturmer, CB9 7XD  
**CABIN CONCEPT**

**A1**

P.C: AA-25-1232 D.N: 231

N

© 2025