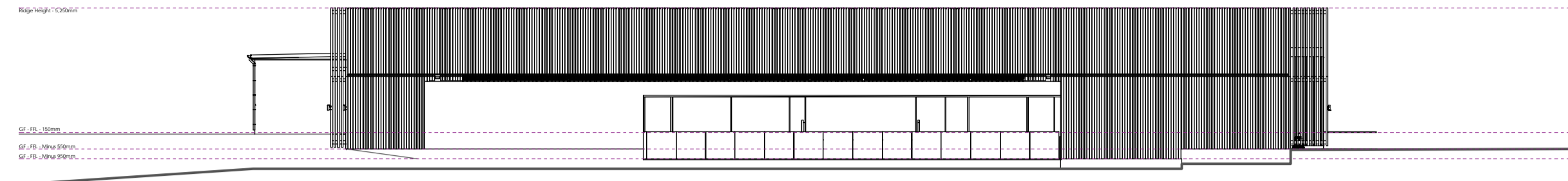
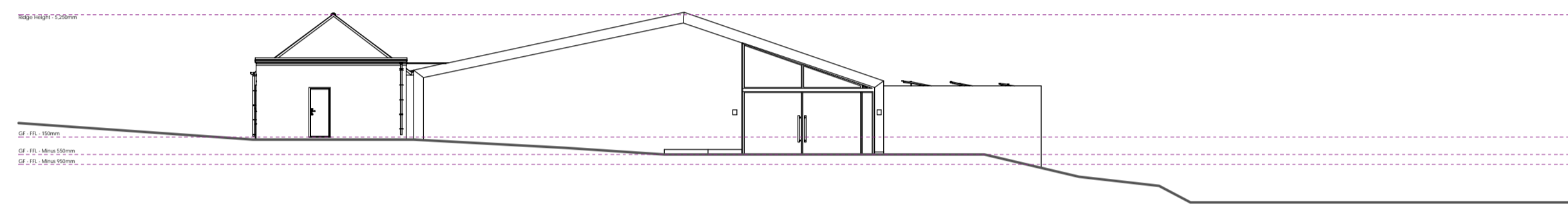


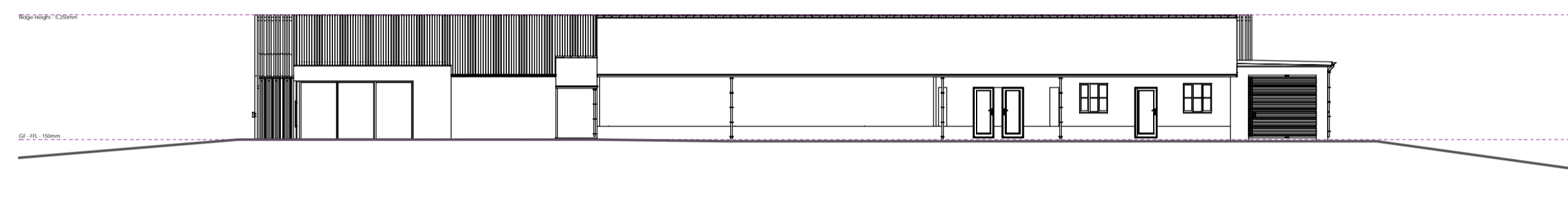
Elevations: Front
Scale 1:200



Elevations: Side
Scale 1:200



Elevations: Rear
Scale 1:200



Elevations: Side
Scale 1:200

Computer Generated Images



Perspective View



Deck to be No Dig cantilever design from main structure

Zone to be No Dig Built up from Landscrew supports

Design Notes

Tree Protection
Trees within the plot must be protected throughout construction and maintained indefinitely, as long as they remain healthy and safe. Any trees damaged or removed must be replaced.

Monument Protection Zone
All works within the Monument Protection Zone are to use no-dig solutions (e.g. Cantilever Support) or raised build-ups, to avoid any significant excavation within the protection zone.

Details and Methodology to be agreed with Historic England / Heritage Officer.

Material Palette
Any form of construction is permitted providing the materials palette requirements set out below and within the CGIs are followed.

Tones and Textures
All external materials must feature natural or earthy tones to blend seamlessly with the rural landscape and neighbouring structures. Approved colours/materials include black, grey, orange and brown. Example materials are provided CGIs. Highly reflective surfaces (other than glass) are not allowed.

Gutters, Windows, and Doors
Windows and doors should be made of aluminium or timber, and all gutters should be metal.

Boundary Treatments
No Solid boundary treatments, such as fences, walls, or gates, are permitted forward of the principal frontage. Boundary features forward of the frontage should be composed of vegetation, such as hedges or bushes below 900 mm, along with feature planting and flowers.

Materials

Timberwork / Roof



Feature Wall



Glazing Frames



Issue Data
A - First Issue: 07/25
B - Redesigned Deck as No DIG: 08/26
C - Redesigned Elevations as No DIG: 09/26

Scale 1:200
0mm 4,000mm 8,000mm

Sturmer Hall, Church Walk, Sturmer, CB9 7XD
HYDRO CONCEPT

A1
P.C. AA-25-1232 D.N. 2/1 © 2025