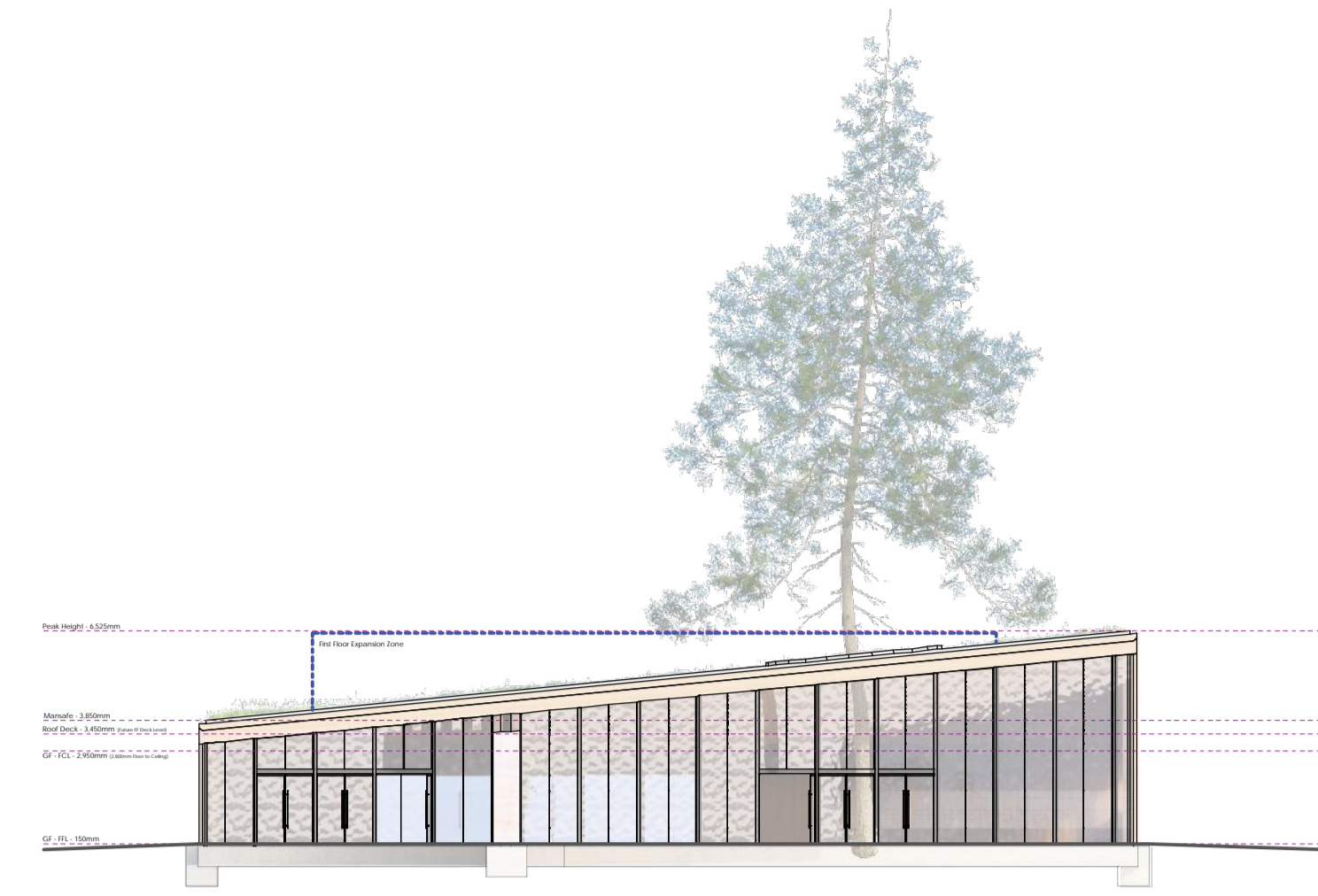


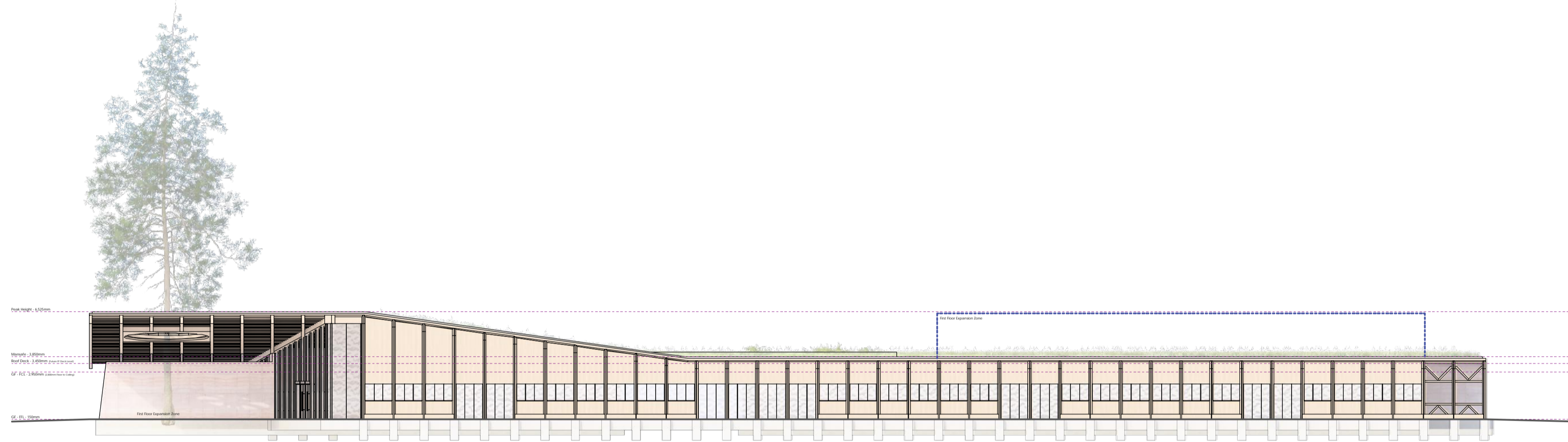
Elevations: Side

Scale 1:200



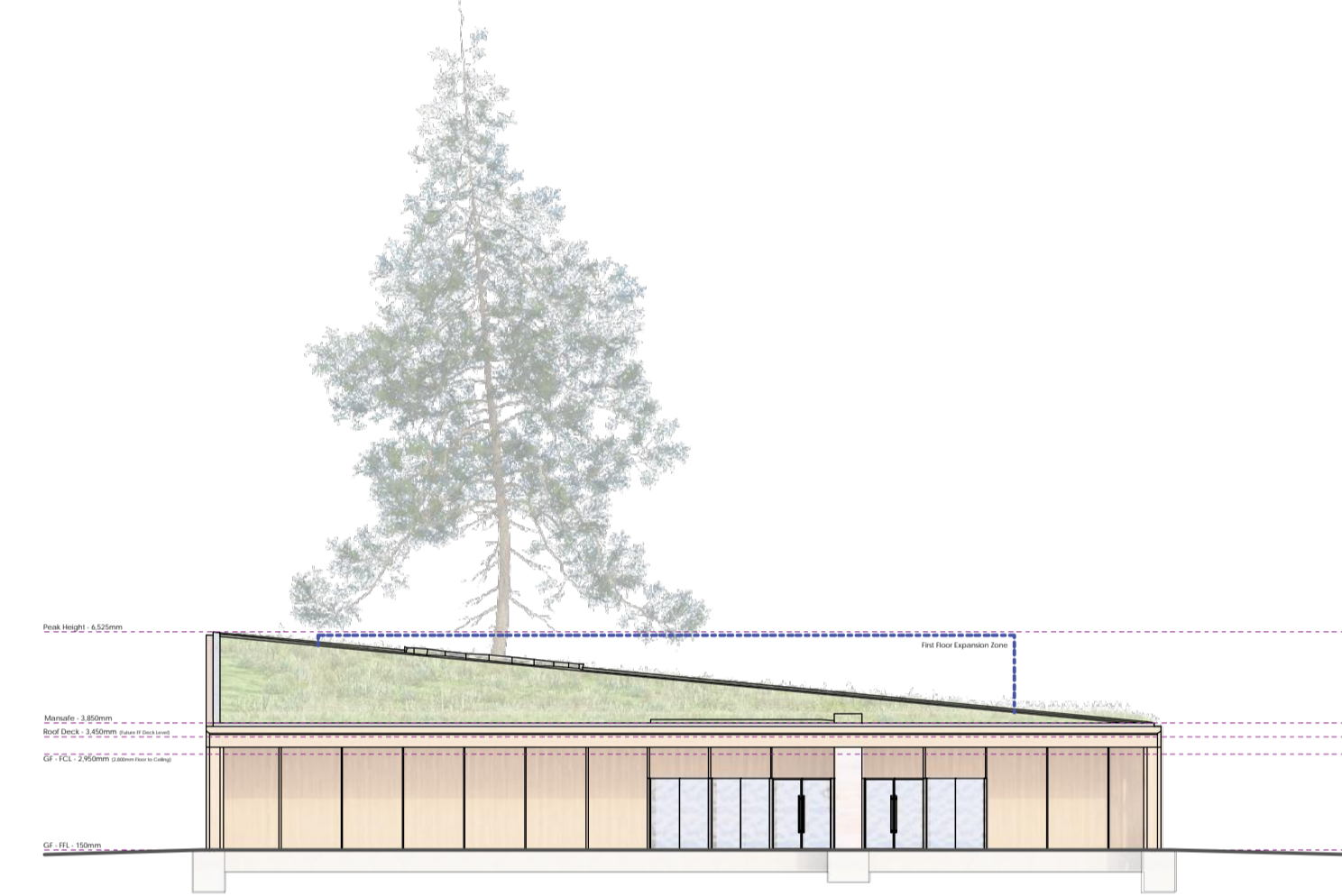
Elevations: Front

Scale 1:200



Elevations: Side

Scale 1:200



Elevations: Rear

Scale 1:200

Computer Generated Images:



Perspective View:



Design Notes

Tree Protection
Trees within the plot must be protected throughout construction and maintained indefinitely as long as they remain healthy and safe. Any trees damaged or removed must be replaced.

Material Palette
Any form of construction is permitted providing the materials palette requirements set out below and within the CGIs are followed.

Tones and Textures
All external materials must feature natural or earthy tones to blend seamlessly with the rural landscape and neighbouring structures. Approved colours/materials include black, grey or orange and brown. Example materials are provided CGIs. Highly reflective surfaces (other than glass) are not allowed.

Gutters, Windows, and Doors
Windows and doors should be made of aluminium or timber, and all gutters should be metal.

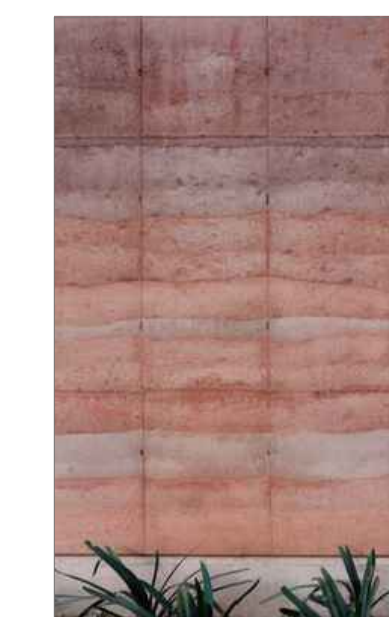
Boundary Treatments
No solid boundary treatments, such as fences, walls, or gates, are permitted forward of the principal frontage. Boundary features forward of the frontage should be composed of vegetation, such as hedges or bushes below 900 mm, along with feature planting and flowers.

Materials:

Timberwork



Feature Wall



Glazing Frames



Roof



Issue Data

A - First Issue: 07/2025

Scale 1:200



Sturmer Hall, Church Walk, Sturmer, CB9 7XD

S.E.N.D CONCEPT

A1

P.C. AA-25-1232 D.N. 2/1

N

© 2025