



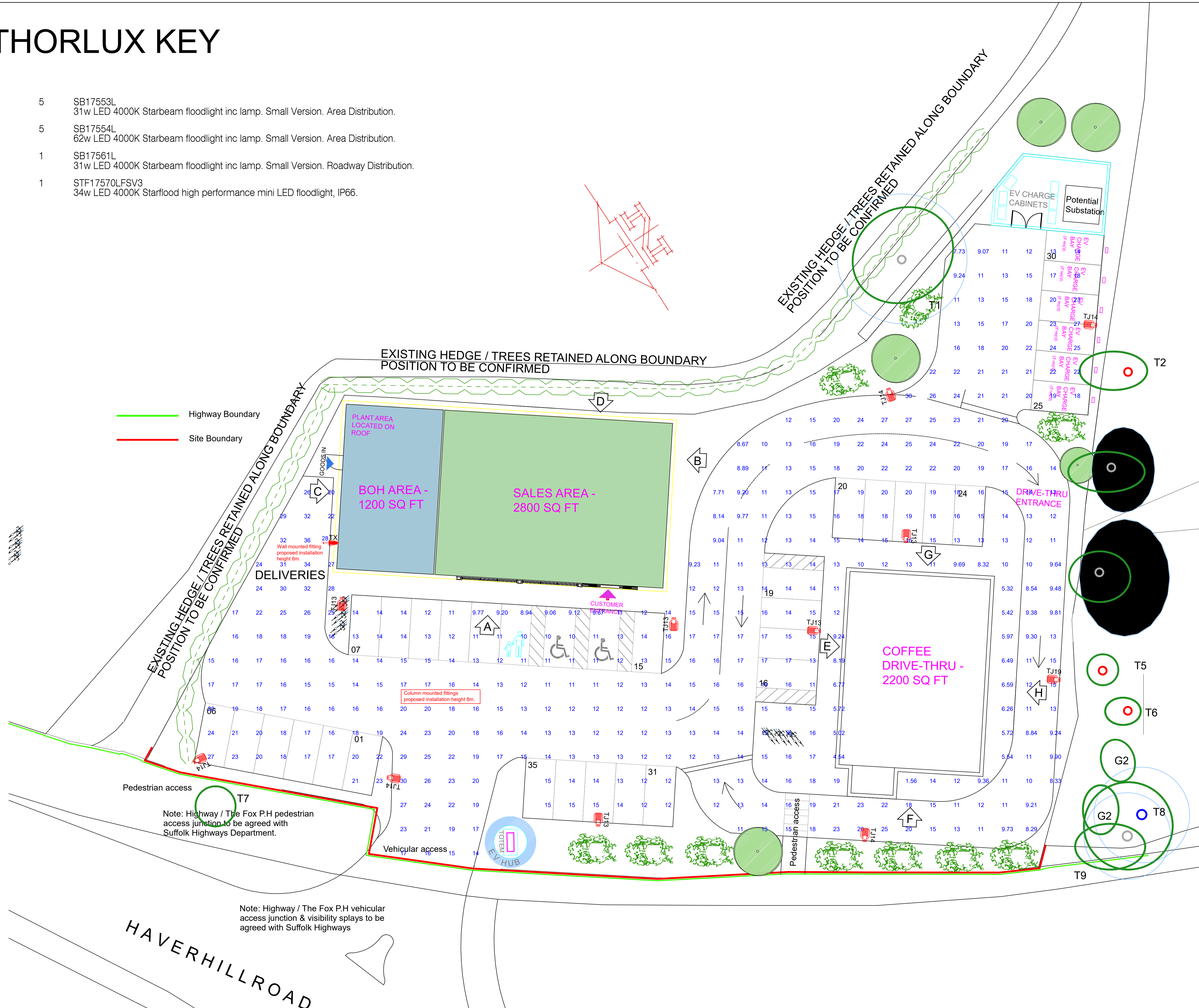


# THORLUX KEY

- TJ13  5 SB17553L  
31w LED 4000K Starbeam floodlight inc lamp. Small Version. Area Distribution.
- TJ14  5 SB17554L  
62w LED 4000K Starbeam floodlight inc lamp. Small Version. Area Distribution.
- TJ19  1 SB17561L  
31w LED 4000K Starbeam floodlight inc lamp. Small Version. Roadway Distribution.
- TX  1 STF17570LFSV3  
34w LED 4000K Starflood high performance mini LED floodlight, IP66.



REV	DATE	BY	DESCRIPTION
Notes			
1. In designing this initial scheme we have prejudged areas which are likely to require emergency lighting in compliance with BS5266-1, -7 & -8, according to a future employers risk assessment. Before a final emergency lighting scheme can be adopted it will be necessary to review this risk assessment, in addition to ensuring coverage of all "positions of emphasis" such as final locations for fire fighting equipment etc. Consequently our design/tender responsibility is limited pending these findings but we will gladly conclude once all the relevant facts have been determined.			
The proposed lighting scheme is subject to our terms and conditions which can be found here: <a href="http://www.thorlux.com/terms">http://www.thorlux.com/terms</a>			
			
Merse Road, North Moons Moat, Redditch, Worcestershire B98 9HH. Telephone 01527 583200 Facsimile 01527 584177 E-Mail <a href="mailto:lighting.design@thorlux.co.uk">lighting.design@thorlux.co.uk</a> Web site: <a href="http://www.thorlux.com">www.thorlux.com</a>			
<b>PROPOSED LIGHTING LAYOUT</b> The Fox P.H. Haverhill Road, Little Wratting Cambridgeshire CB9 7UD			
SCALE	1:150@A1		
DATE	15.09.2023		
DRN. BY	SK		
DESIGNER	SK		
<b>DRAWING No.</b> <b>571591-00</b>			
BASED ON CUSTOMER DRG. ORIGINATOR:		REV. DATE	