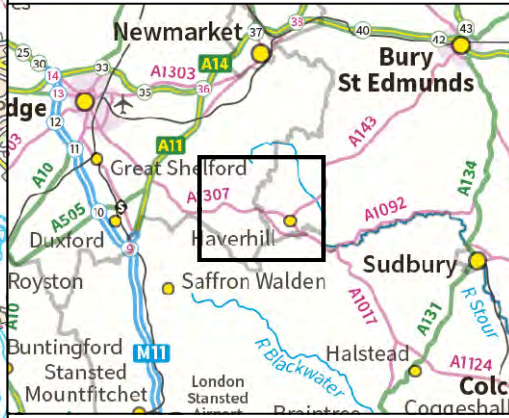




**LEGEND**

- Site Boundary
- Site Boundary 500 m Buffer
- Site Boundary 2 km Buffer
- Landscape Study Area (5 km)
- Local Authority Boundary



**SLR**

4/5 LOCHSIDE VIEW  
EDINBURGH PARK  
EDINBURGH  
EH12 9DH

T: +44 (0)131 335 6830  
www.slrconsulting.com

**SPRING GROVE GREEN POWER**

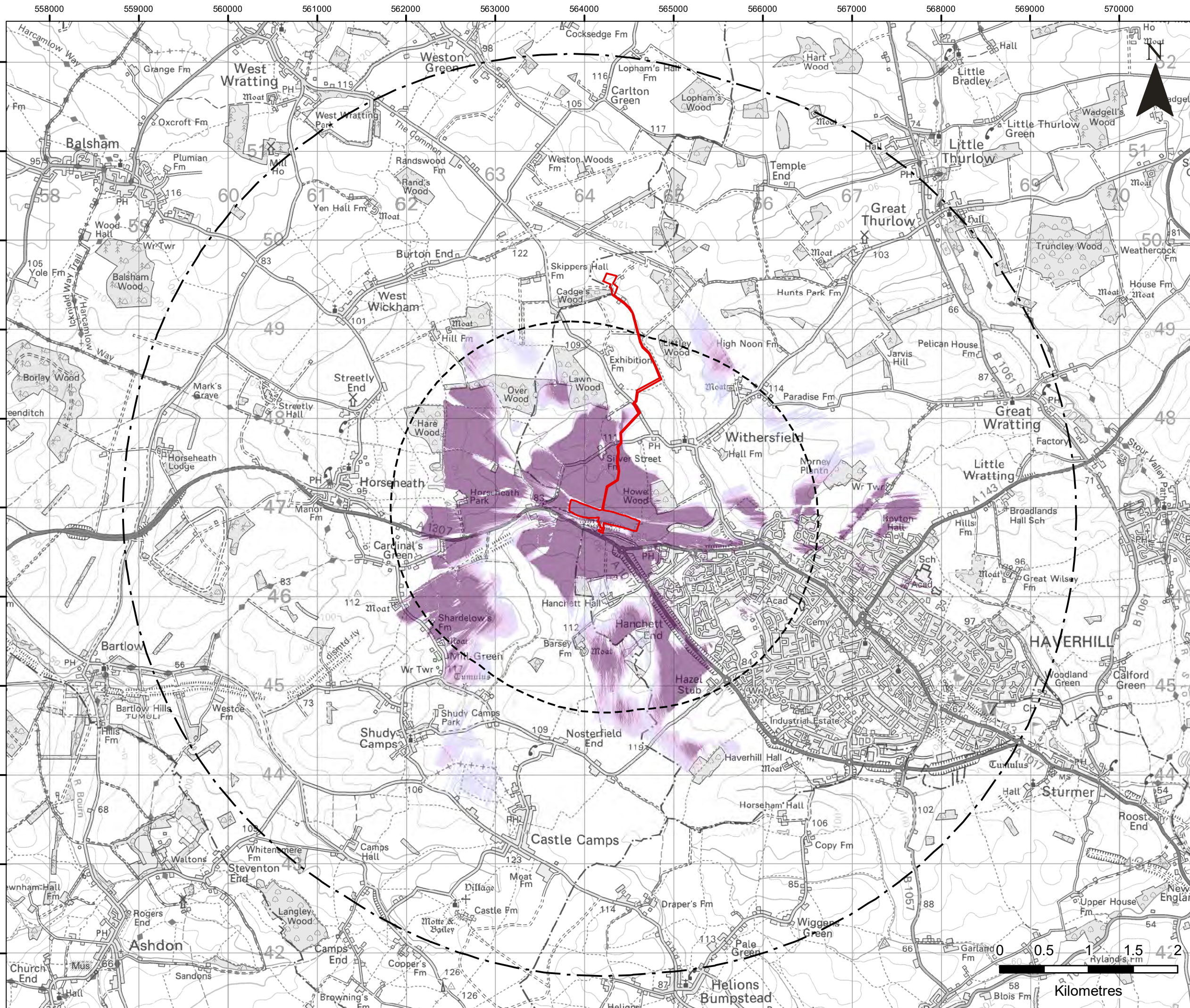
**LANDSCAPE**

**SITE LOCATION**

**FIGURE 1**

Scale 1:40,000 @ A3 Date MARCH 2023





**LEGEND**

Site Boundary

Site Boundary 2 km Buffer

Landscape Study Area (5 km)

**Zone of Theoretical Visibility: Screened Scenario**

**Proportion of Site Visible (17 m Height)**

Higher Number of Points (Base off a 50 m Grid)

Lower Number of Points (Base off a 50 m Grid)

**Note**

This Zone of Theoretical Visibility (ZTV) has been generated using ESRI ArcGIS Spatial Analyst extension. The digital terrain model (DTM) has been derived from The Environment Agency National LIDAR Programme 1 m spatial resolution with a vertical accuracy of +/-15 cm RMSE. Earth curvature has been included in the ZTV calculation and refraction of light has been applied using ESRI default settings. The ZTV has been generated from a viewing height of 2m above ground level which falls within recommendations by "Visual Representation of Windfarms" prepared for Scottish Natural Heritage (SNH) February 2017 - Version 2.2.

The use of ZTV mapping at this stage is limited and the following assumptions should be noted:

- The ZTV has been generated using a 50m grid of the maximum developable area.
- A building height of 17 m has been used for generating the ZTV.
- The ZTV accounts for the localised screening effects of vegetation and buildings utilising the Environment Agency National LIDAR Programme DSM 1 m spatial resolution data. The heights of buildings and vegetation have been generated by calculating the difference between DSM and DTM. Where the height difference is greater than 1 m, this has been classified as zero visibility of the development. The ZTV does not indicate potential visual effects or show the likely significance of effects. It shows potential theoretical visibility only. The ZTV has been produced for the purpose of informing 'on the ground' visual assessment.
- The ZTV colour palette has been specifically developed to assist viewers with reduced sensitivity to red, green and blue light.
- The ZTV has been generated up to 5 km from the proposed site.



**SLR**

4/5 LOCHSIDE VIEW  
EDINBURGH PARK  
EDINBURGH  
EH12 9DH  
  
T: +44 (0)131 335 6830  
www.slrconsulting.com

SPRING GROVE GREEN POWER

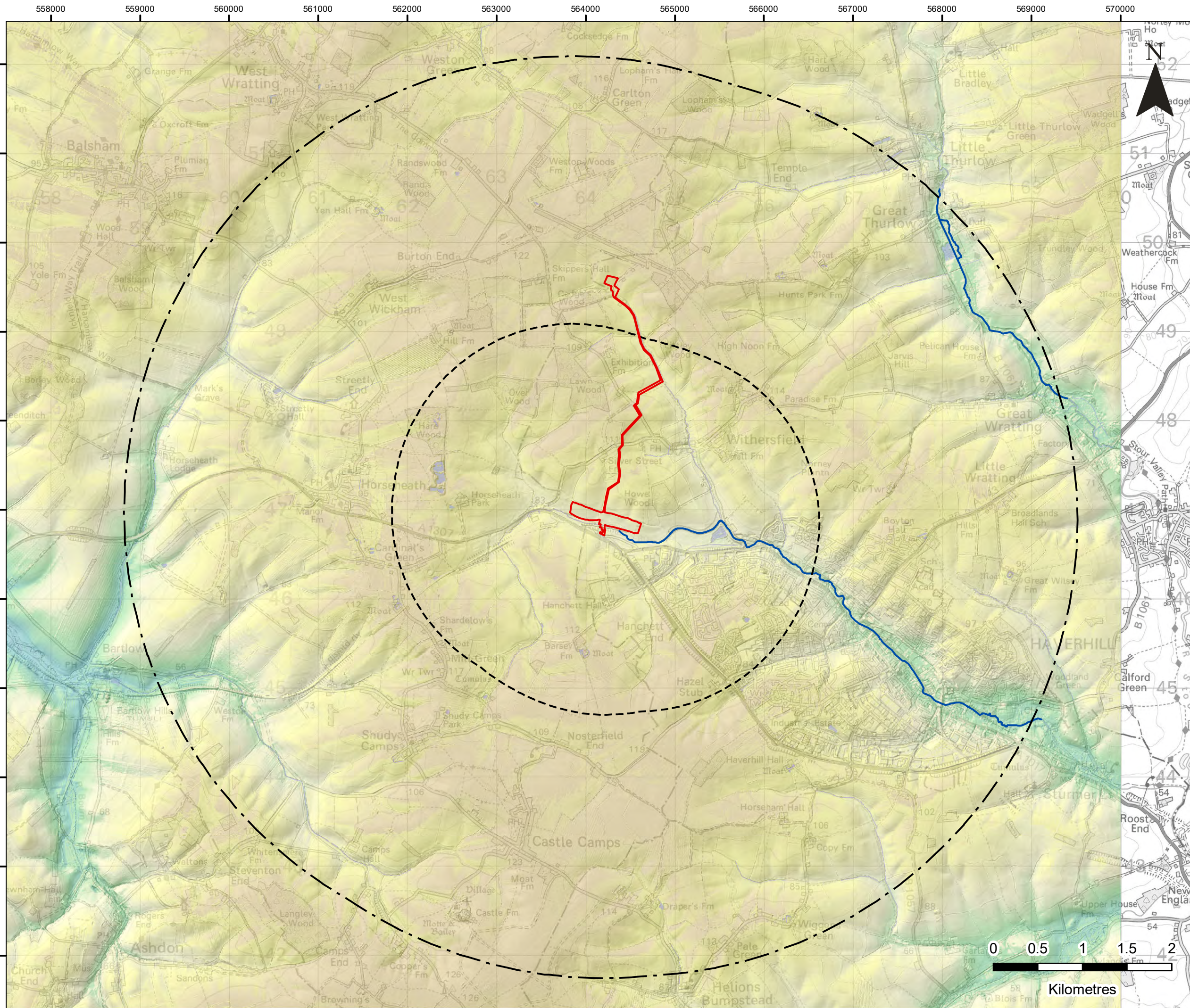
LANDSCAPE

**ZONE OF THEORETICAL VISIBILITY  
SCREENED**

**FIGURE 2**

Scale 1:40,000 @ A3      Date MARCH 2023





**LEGEND**

- Site Boundary
- Site Boundary 2 km Buffer
- Landscape Study Area (5 km)
- Statutory Main River

**Topography (m AOD)**

130m

25m

4/5 LOCHSIDE VIEW  
EDINBURGH PARK  
EDINBURGH  
EH12 9DH

T: +44 (0)131 335 6830  
www.slrconsulting.com

**SPRING GROVE GREEN POWER**

**LANDSCAPE**

**TOPOGRAPHY**

**FIGURE 3**

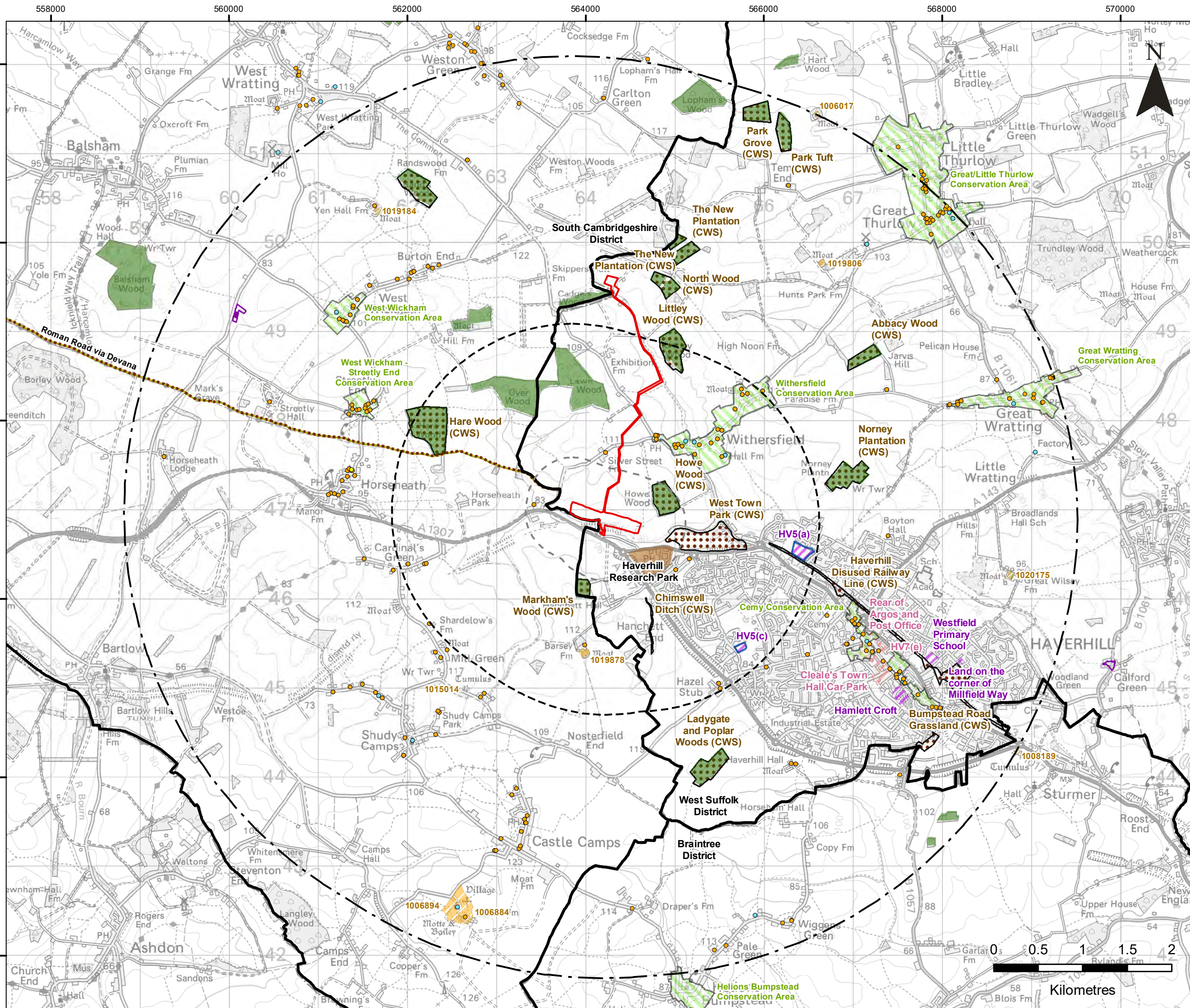
Scale 1:40,000 @ A3

Date MARCH 2023

0 0.5 1 1.5 2

Kilometres





**LEGEND**

- Site Boundary
- Site Boundary 500 m Buffer
- Site Boundary 2 km Buffer
- Landscape Study Area (5 km)
- Local Authority Boundary
- Scheduled Monument
- Conservation Area
- Listed Building (Grade)
  - I
  - II
  - II\*
- Roman Road
- Ancient Woodland
- CRoW / Open Access Land
- Strategic Housing Land Availability Assessment (SHLAA)
- Site Allocation (Housing)
- Site Allocation (Mixed)
- County Wildlife Site (CWS)
- Employment Area





4/5 LOCHSIDE VIEW  
EDINBURGH PARK  
EDINBURGH  
EH12 9DH  
T: +44 (0)131 335 6830  
www.slrconsulting.com

SPRING GROVE GREEN POWER

LANDSCAPE

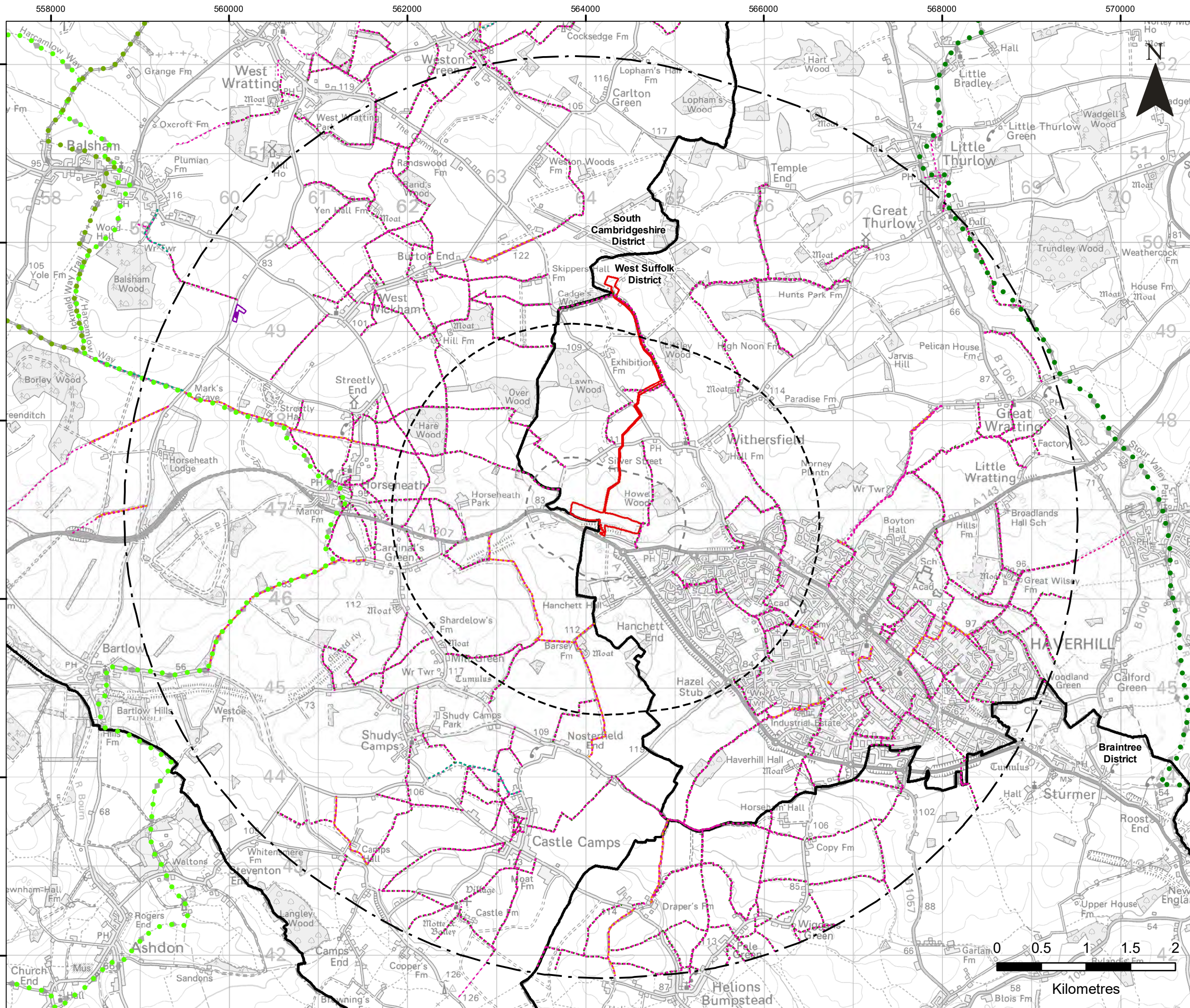
LANDSCAPE PLANNING CONTEXT

**FIGURE 4**

Scale 1:40,000 @ A3

Date MARCH 2023





- LEGEND**
- Site Boundary
  - Site Boundary 500 m Buffer
  - Site Boundary 2 km Buffer
  - Landscape Study Area (5 km)
  - Local Authority Boundary
  - PRoW - Byway Open to All Traffic
  - PRoW - Bridleway
  - PRoW - Footpath
  - PRoW - Byway
  - Long Distance Route - Stour Valley Path
  - Long Distance Route - The Icknield Way Trail
  - Long Distance Route - Harcamlow Way
  - CRoW / Open Access Land



4/5 LOCHSIDE VIEW  
EDINBURGH PARK  
EDINBURGH  
EH12 9DH

T: +44 (0)131 335 6830  
www.slrconsulting.com

**SPRING GROVE GREEN POWER**

**LANDSCAPE**

**ACCESS AND RECREATION**

**FIGURE 5**

Scale 1:40,000 @ A3 Date MARCH 2023



25/05/2023

Cori Moran

\\naufs\NEWFS-E\Projects\404\11923 - Acorn Bioenergy\00005 - Thurflow\Tech\LA\DWgs\ - Wking\CAD Master\Thurflow - Site Layout - FIGURE 6 - Landscape Strategy\_P02-V2.dwg



Notes:

Legend:

- PROPOSED SPECIES RICH GRASSLAND
- PROPOSED WOODLAND MIX
- PROPOSED MIX NATIVE SHRUB PLANTING
- EXISTING MATURE TREES TO BE RETAINED
- LAGOONS
- HRA ROAD
- CONCRETE ROAD
- GRAVEL
- BUILDINGS / PLANT
- AGRICULTURAL HRA CLAMP
- PROPOSED TANK BUND SLAB BUILD UP  
Fibre Reinforced Concrete

P02	UPDATED ENTRANCE ROAD	22/08/23	CM	MB	RT
P01	ORIGINAL ISSUE	26/05/23	CM	MB	RT
Rev	Amendments	Date	By	Chk	Auth



www.slrconsulting.com

Drawing Status & Suitability Code

Client  
ACORN BIOENERGY

Project  
SPRING GROVE GREEN

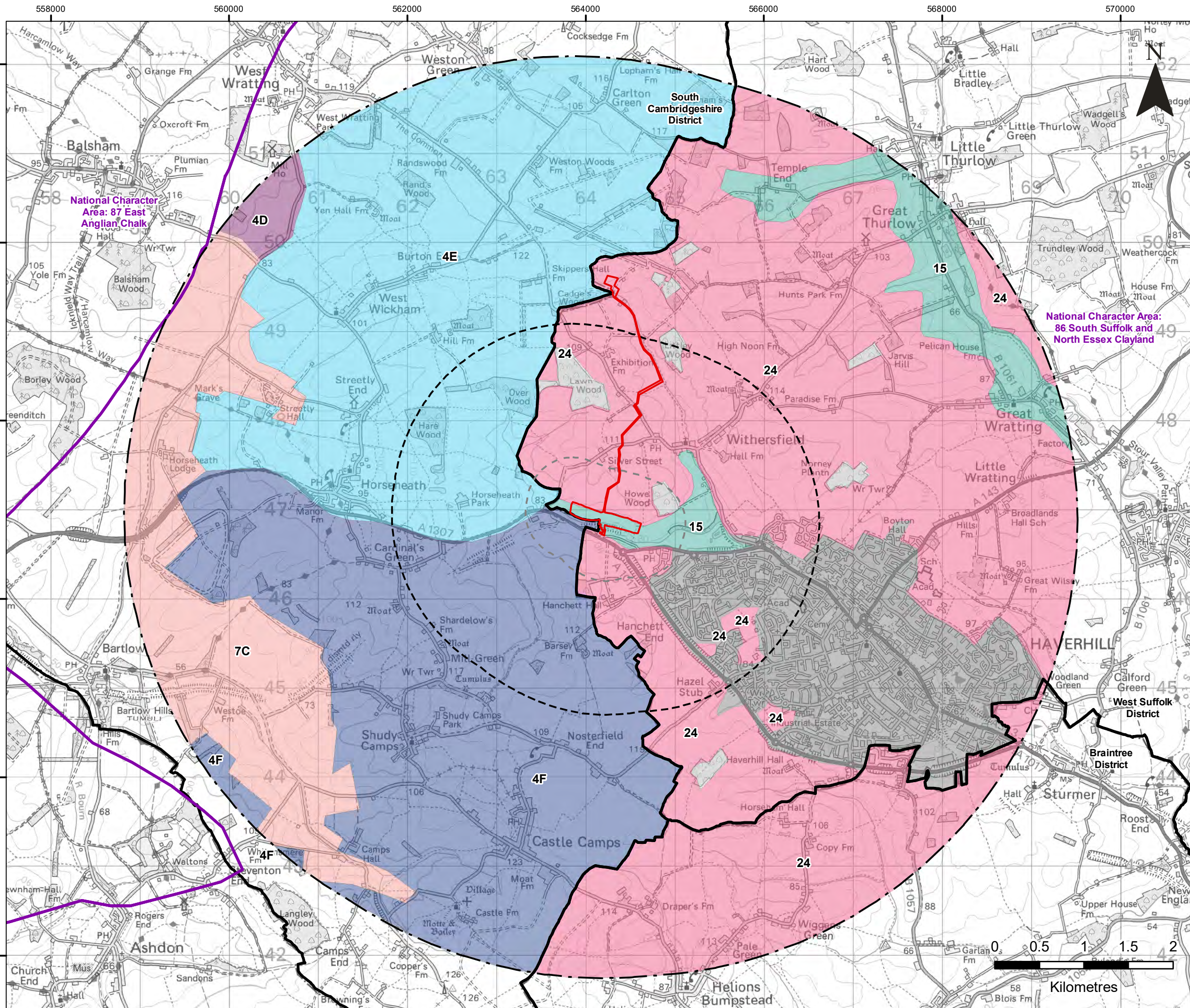
Drawing Title  
LANDSCAPE STRATERGY

Scale AS SHOWN @ A2		SLR Project No.	
Designed	Drawn CM	Checked MB	Authorised RT
Date	Date 22/08/23	Date 22/08/23	Date 23/08/23
Drawing Number FIGURE 6			Rev. P02

Species	Common Name	Percentage	Woodland Mix Tree Species		
<b>Wildflowers</b>					
Achillea millefolium	Yarrow	0.50	Quercus robur	Oak	20
Centuarea nigra	Common Knapweed	1.70	Tilia Cordata	Small-Leaved Lime	20
Cruciata laevipes	Crosswort	1.50	Carpinus Betulus	Hornbeam	10
Daucus carota	Wild Carrot	0.50	Fagus sylvatica	Beech	10
Knautia arvensis	Field Scabious	0.50	Betylia pendula	Birch	10
Leucanthemum vulgare	Oxeye Daisy	1.50	<b>Understorey/Shrub Species</b>		
Malva moschata	Musk Mallow	2.00	Sambucus nigra	Elder	5
Medicago lupulina	Black Medick	0.20	Crataegus monogyna	Hawthorn	5
Plantago lanceolata	Ribwort Plantain	3.00	Ilex aquifolium	Holly	5
Poterium saguisorba ssp sanguisorba	Salad Burnet	1.50	Corylus avellana	Hazel	5
Primula veris	Cowslip	0.09	Viburnum opulus	Guelder Rose	5
Ranunculus acris	Meadow Buttercup	0.30	Prunus Spinosa	Blackthorn	5
Rhinanthus minor	Yellow Rattle	0.99	Total		100
Silene dioica	Red Campion	0.49			
Silene Vulgaris	Bladder Campion	0.19			
<b>Grasses</b>			<b>Proposed Mixed Native Scrub Planting</b>		
Agrostis capillaris	Common Bent	8.50	<b>Species</b>	<b>Common Name</b>	<b>Percentage</b>
Cynosurus cristatus	Crested Dogstail	29.75	Acer campestre	Field Maple	7
Festuca rubra	Red Fescue	25.50	Cornus sanguinea	Dogwood	7
Phleum bertolonii	Smaller Cat's-tail	4.25	Corylus avellana	Hazel	7
Poa pratensis	Smooth-stalked Meadow-grass	17.00	Crataegus monogyna	hawthorn	20
Total		100	Euonymus europaeus	Spindle	7
			Ilex aquifolium	Holly	7
			Prunus avium	Wild Cherry	7
			Prunus spinosa	Blackthorn	20
			Quercus robur	Pedunculate Oak	20
			Total		100







**LEGEND**

- Site Boundary
- Site Boundary 500 m Buffer
- Site Boundary 2 km Buffer
- Landscape Study Area (5 km)
- Local Authority Boundary
- National Character Area

**Greater Cambridgeshire Landscape Character Assessment, 2021**

- LCA4D West Wratting Wooded Claylands
- LCA4E West Wickham Wooded Claylands
- LCA4F The Camps Wooded Claylands
- LCA7C Linton Chalk Hills

**Suffolk Landscape Character Assessment, 2009**

- LCT15 Rolling Estate Farmlands
- LCT24 Undulating Estate Farmlands
- Landscape Not Classified
- Urban

acorn  
BIOENERGY

SLR

4/5 LOCHSIDE VIEW  
EDINBURGH PARK  
EDINBURGH  
EH12 9DH  
T: +44 (0)131 335 6830  
www.slrconsulting.com

SPRING GROVE GREEN POWER

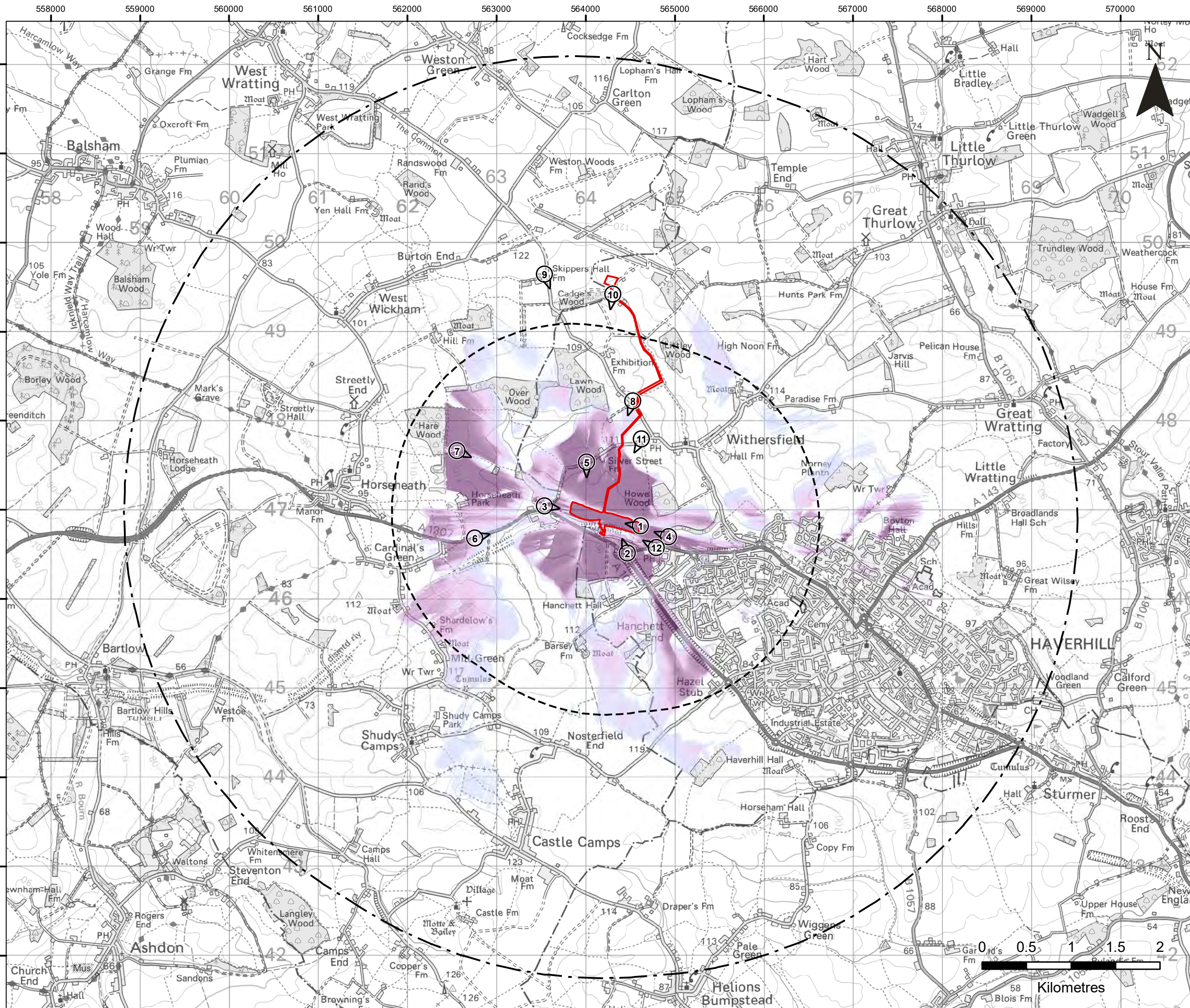
LANDSCAPE

LANDSCAPE CHARACTER

**FIGURE 7**

Scale 1:40,000 @ A3 Date MARCH 2023





**LEGEND**

- Site Boundary
- Site Boundary 2 km Buffer
- Landscape Study Area (5 km)
- VP Location

**Zone of Theoretical Visibility: Screened Scenario**

**Proportion of Site Visible (17 m Height)**

- Higher Number of Points (Based off a 50 m Grid)
- Lower Number of Points (Based off a 50 m Grid)

**Note**

This Zone of Theoretical Visibility (ZTV) has been generated using ESRI ArcGIS Spatial Analyst extension. The digital terrain model (DTM) has been derived from The Environment Agency National LIDAR Programme 1 m spatial resolution with an vertical accuracy of +/-15 cm RMSE. Earth curvature has been included in the ZTV calculation and refraction of light has been applied using ESRI default settings. The ZTV has been generated from a viewing height of 2m above ground level which falls within recommendations by "Visual Representation of Windfarms" prepared for Scottish Natural Heritage (SNH) February 2017 - Version 2.2.

The use of ZTV mapping at this stage is limited and the following assumptions should be noted:

- The ZTV has been generated using a 50m grid of the maximum developable area.
- A building height of 17 m has been used for generating the ZTV.
- The ZTV accounts for the localised screening effects of vegetation and buildings utilising the Environment Agency National LIDAR Programme DSM 1 m spatial resolution data. The heights of buildings and vegetation have been generated by calculating the difference between DSM and DTM. Where the height difference is greater than 1 m, this has been classified as zero visibility of the development. The ZTV does not indicate potential visual effects or show the likely significance of effects. It shows potential theoretical visibility only. The ZTV has been produced for the purpose of informing 'on the ground' visual assessment.
- The ZTV colour palette has been specifically developed to assist viewers with reduced sensitivity to red, green and blue light.
- The ZTV has been generated up to 5 km from the proposed site.

4/5 LOCHSIDE VIEW  
EDINBURGH PARK  
EDINBURGH  
EH12 9DH  
T: +44 (0)131 335 6830  
www.slrconsulting.com

**SPRING GROVE GREEN POWER**

**LANDSCAPE**

**ZONE OF THEORETICAL VISIBILITY WITH VIEWPOINTS**

**FIGURE 8**

Scale 1:40,000 @ A3

Date MARCH 2023